

Table S1. Spermiogram of turkey toms enrolled in the study.

Parameters	Turkey 1 N =9	Turkey 2 N =16	Turkey 3 N =15	Turkey 4 N =11	Turkey 5 N =11	Turkey 6 N =15	Turkey 7 N =7	Mean N =84
Volume (ml)	0.17 ± 0.14	0.19 ± 0.62	0.19 ± 0.11	0.21 ± 0.11	0.22 ± 0.14	0.35 ± 0.13	0.21 ± 0.11	0.23 ± 0.13 (0.20 - 0.25)
Concentration (x10 ⁹ /ml)	4.18 ± 2.32	4.72 ± 2.42	5.30 ± 2.28	5.46 ± 4.04	4.48 ± 1.84	6.43 ± 2.74	5.07 ± 2.60	5.16 ± 2.66 (4.59-5.74)
Motility (%)	88.78 ± 5.33	91.50 ± 5.30	86.53 ± 6.00	88.91 ± 9.00	83.72 ± 7.54	85.87 ± 6.31	84.29 ± 9.76	87.22 ± 7.42 (85.63 - 88.81)
Viability (%)	95.22 ± 3.90	97.06 ± 4.78	97.53 ± 2.19	96.00 ± 4.15	95.73 ± 4.88	96.27 ± 5.27	97.29 ± 2.23	96.44 ± 4.11 (95.56 - 97.32)
Morphological defects (%)	4.67 ± 3.04	3.44 ± 2.63	5.80 ± 3.55	4.27 ± 2.90	6.46 ± 3.62	4.67 ± 3.31	7.14 ± 3.63	5.54 ± 3.53 (4.38 - 5.90)
pH	7.29 ± 0.34	7.10 ± 0.34	7.85 ± 0.55	7.73 ± 0.34	7.38 ± 0.48	7.60 ± 0.39	7.57 ± 0.53	7.50 ± 0.49 (7.40 - 7.60)

*Values in parenthesis represent the 95% confidence interval for each parameter. N= number of replications.

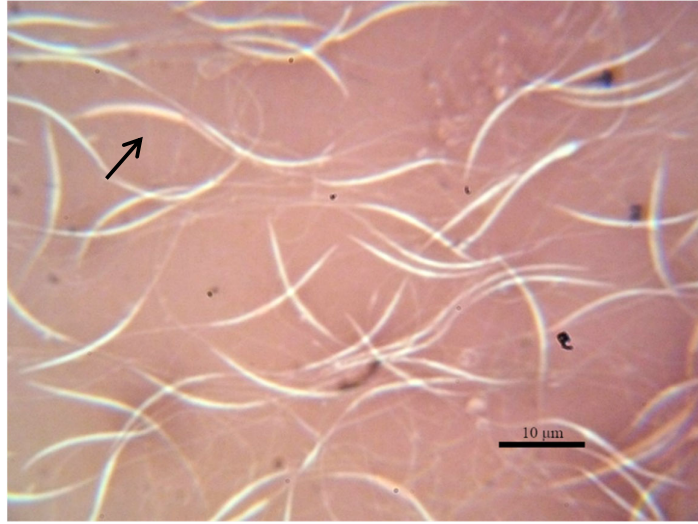


Figure S1. Photomicrograph of fresh undiluted turkey semen stained with eosin-nigrosin showing live (unstained) and dead sperm (partially stained, arrow).