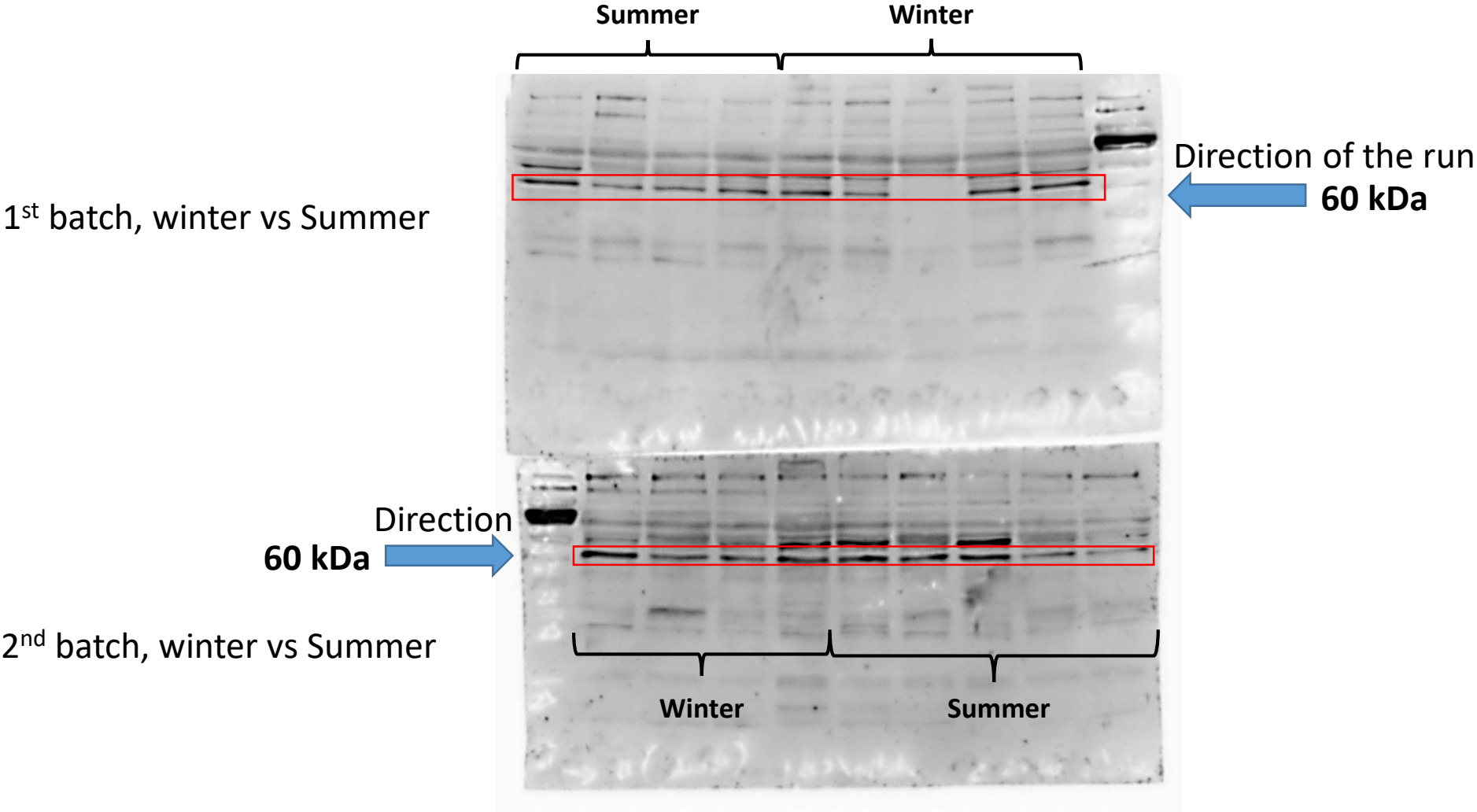
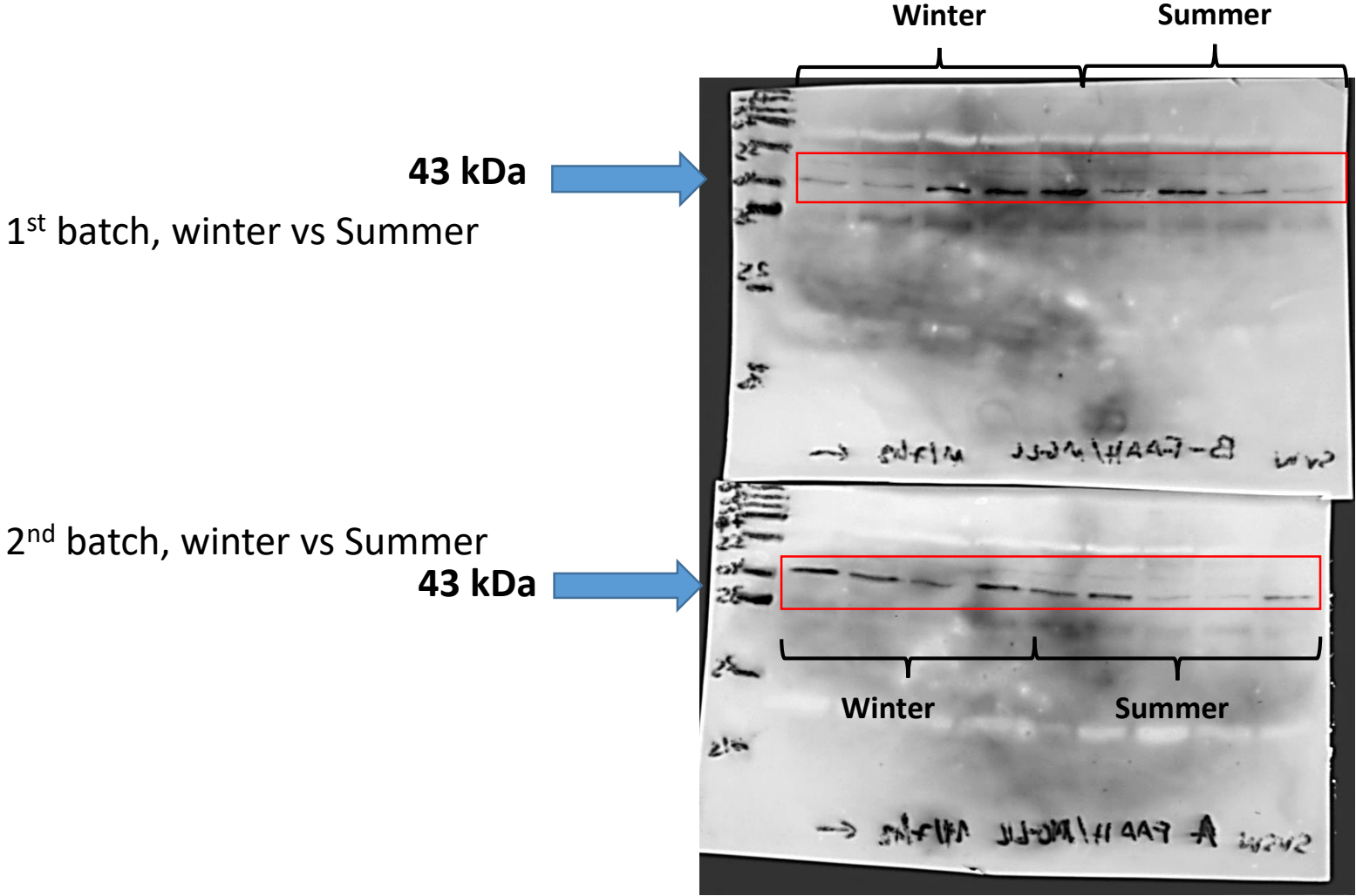


CB1 protein winter vs summer (Fig 1)



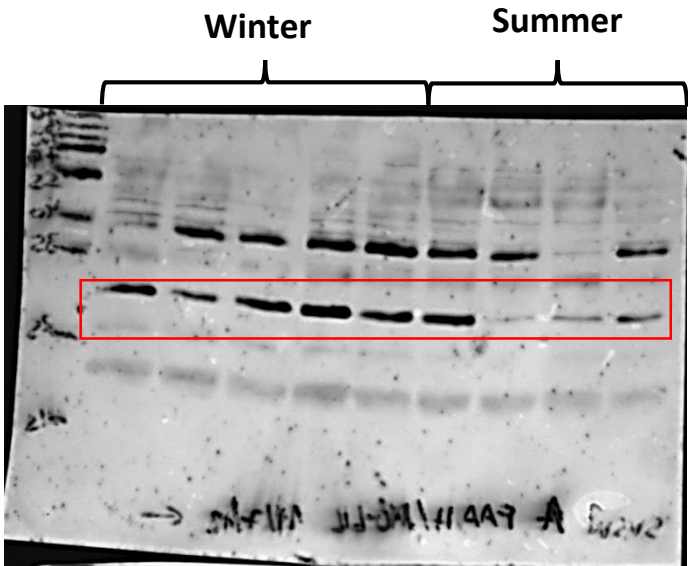
FAAH protein winter vs. summer (Fig 1)



MGLL protein Winter vs. Summer (Fig 1)

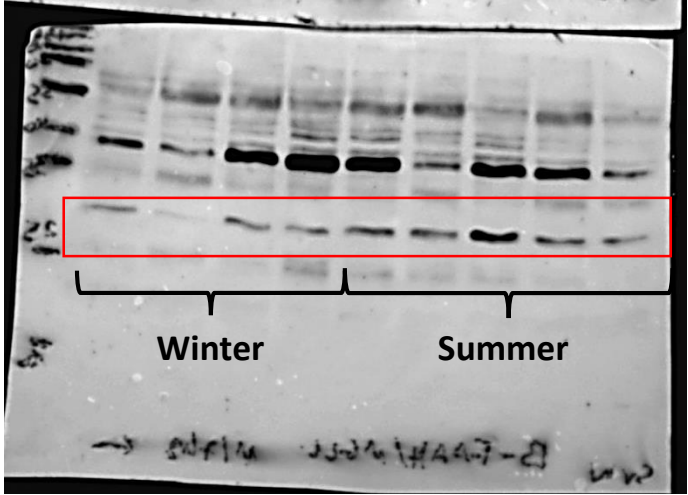
1st batch, winter vs Summer

35 kDa →

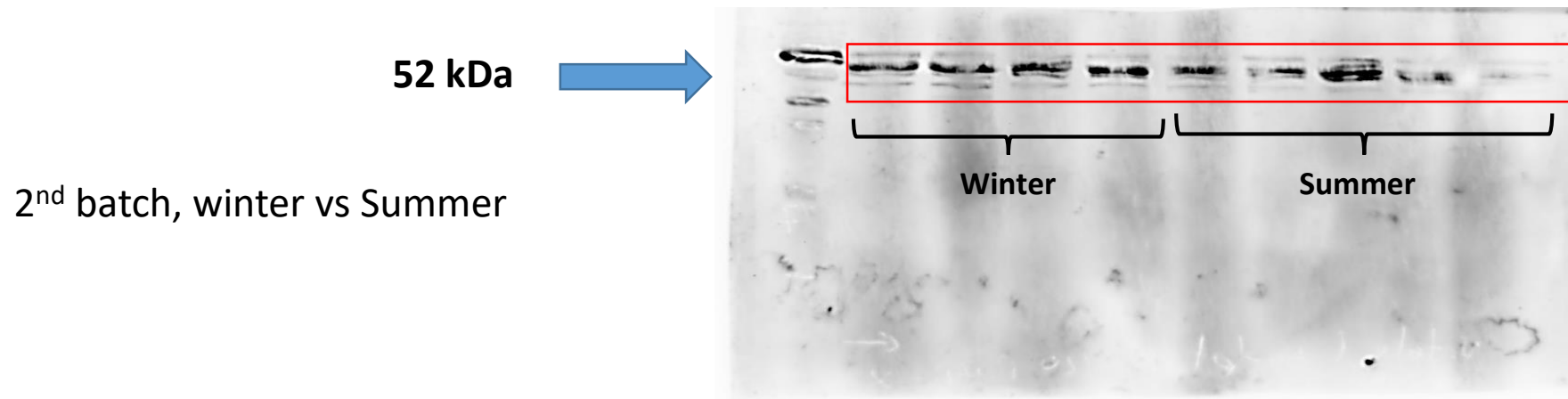
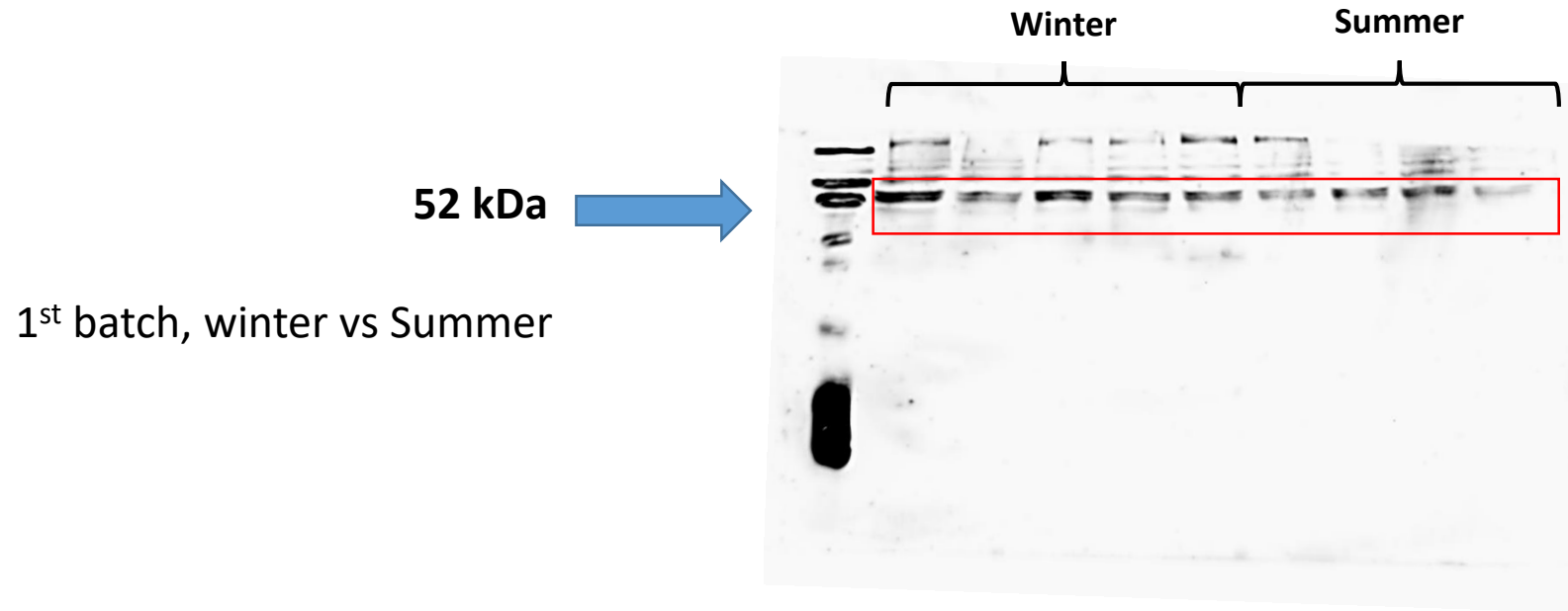


2nd batch, winter vs Summer

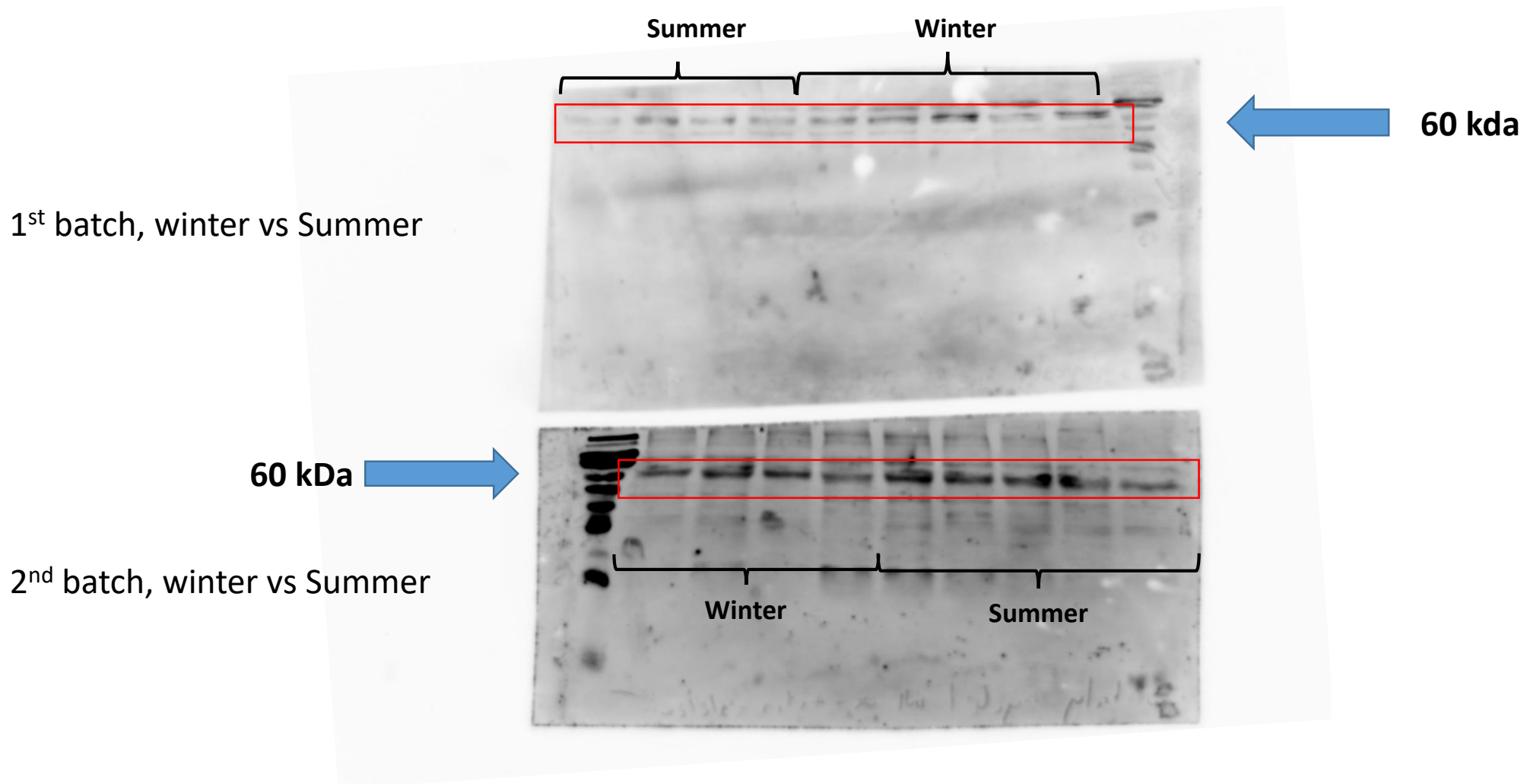
35 kDa →



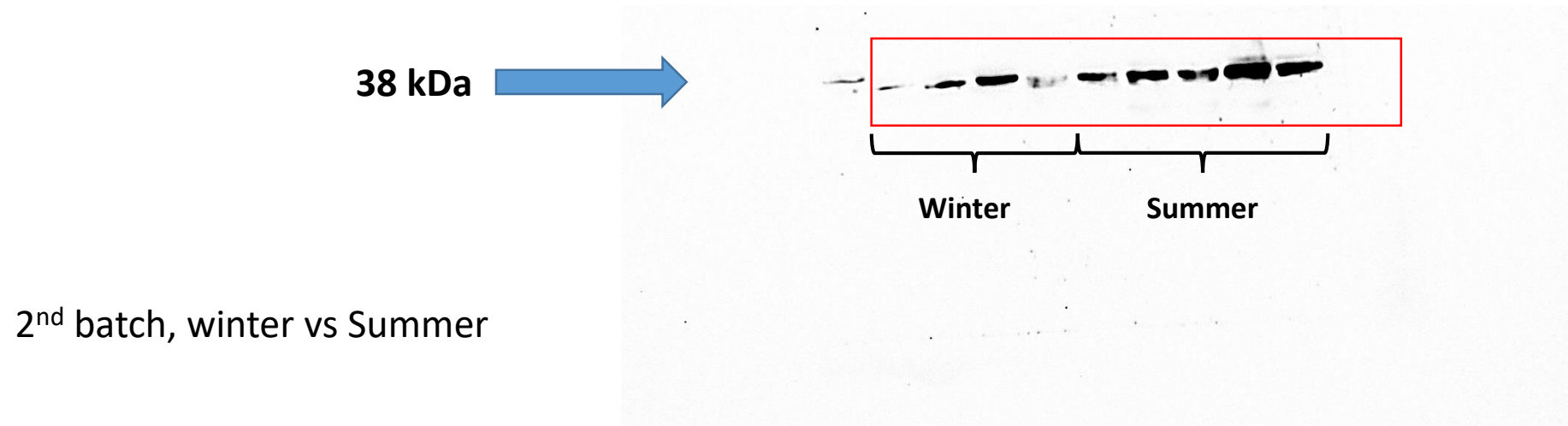
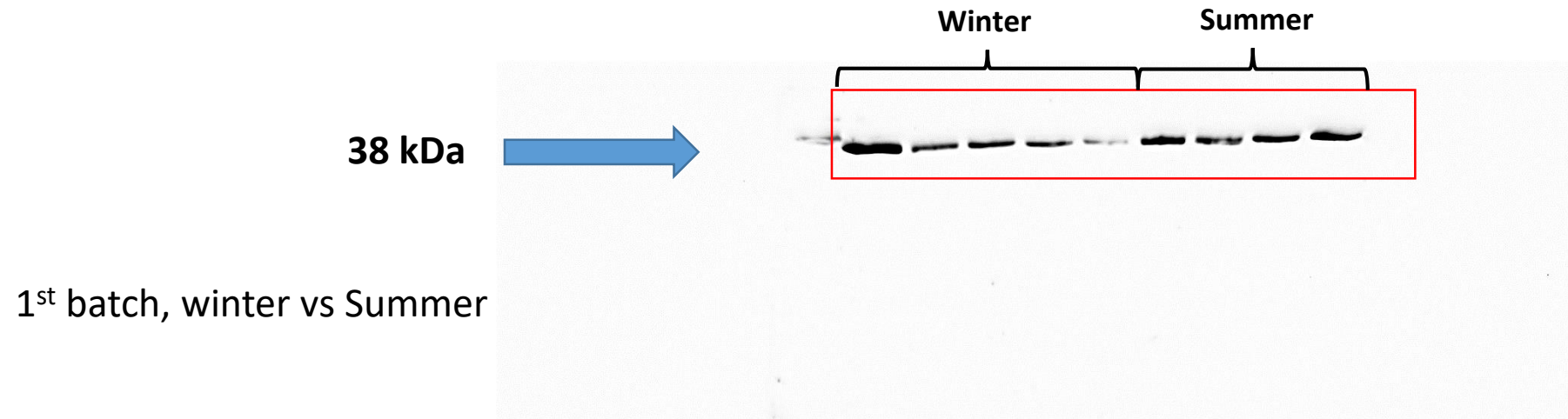
PPARα protein winter vs. summer (Fig 1)



TNF α protein winter vs summer (Fig 2)

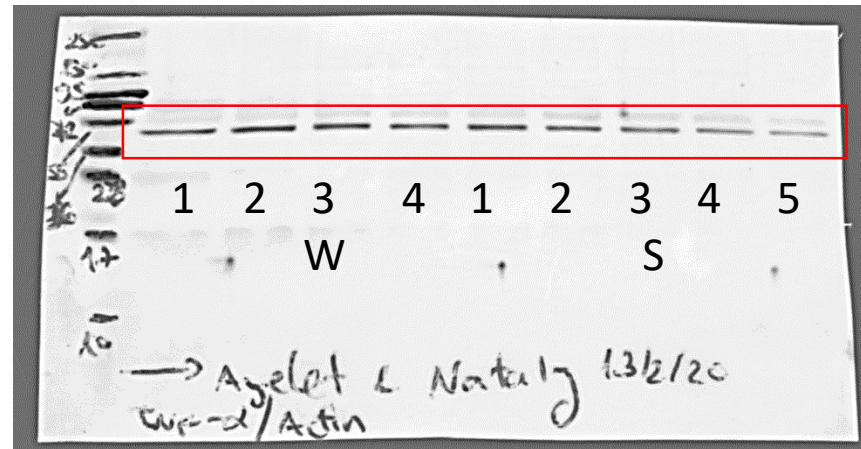


TRPV1 protein winter vs summer (Fig 2)



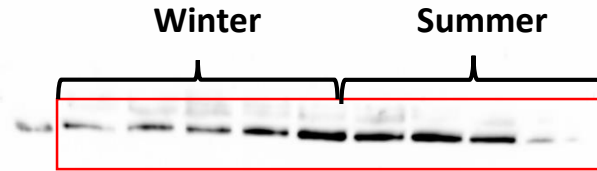
Actin protein- number 1 winter vs summer (fig 1)

45 kDa-shown in Fig 1

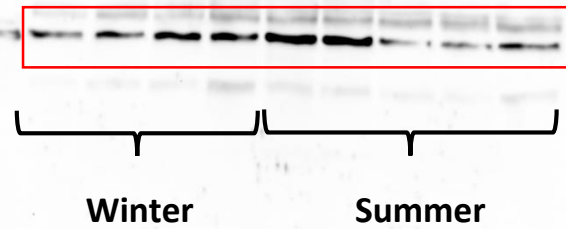


Actin protein- number 2 winter vs. summer (shown in fig 2)

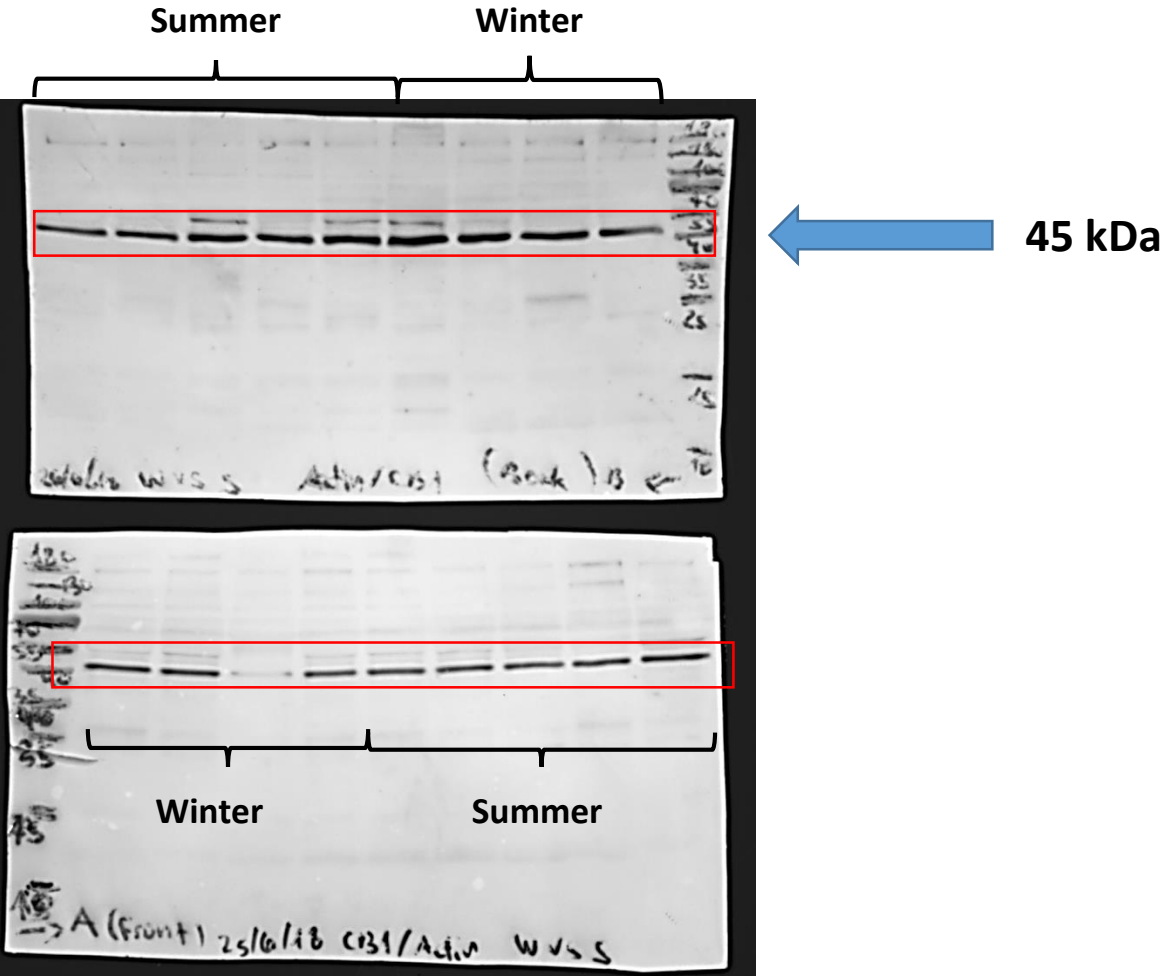
45 kDa →
1st batch, winter vs Summer



45 kDa →
2nd batch, winter vs Summer

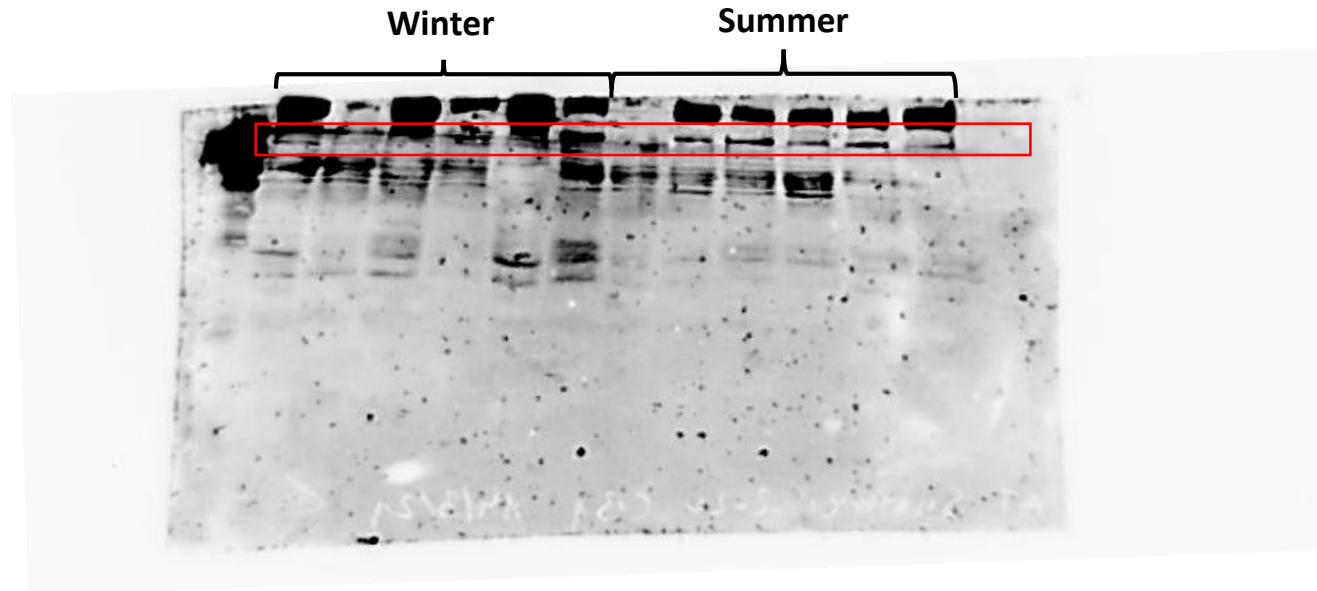


Actin protein- number 3 winter vs summer

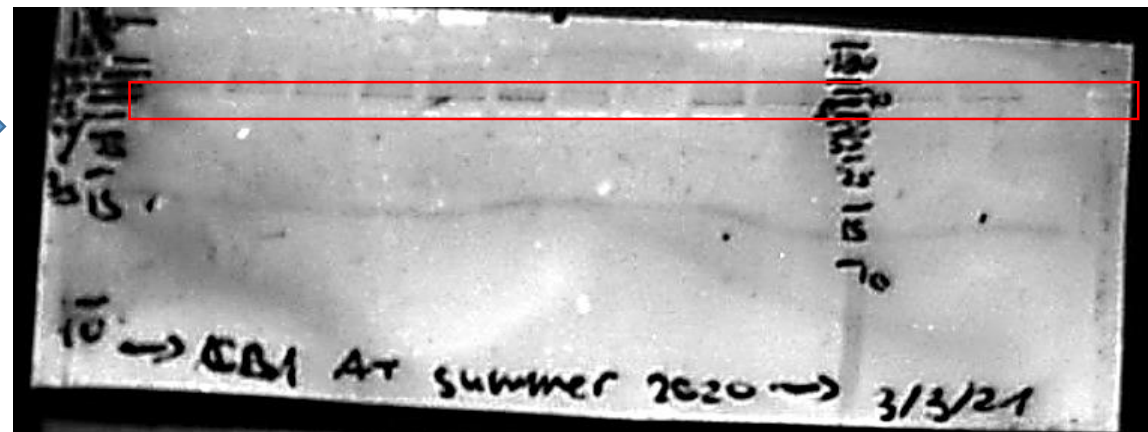


CB1 protein in Cooled vs. not cooled (2 runs)- shown in fig 3

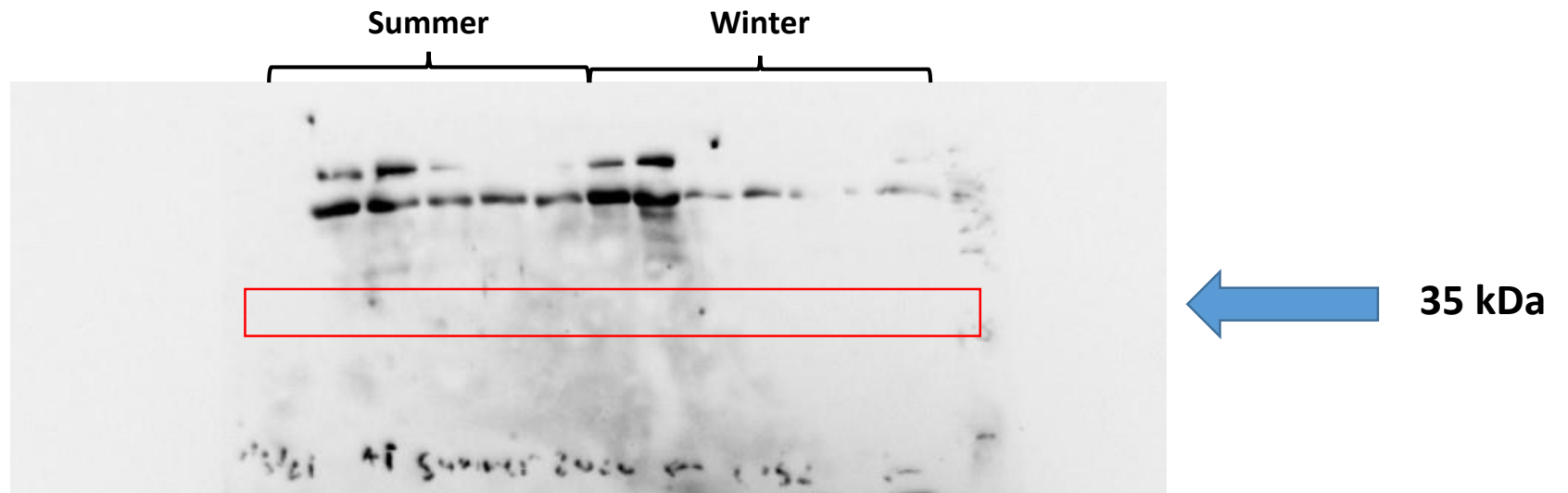
60 kDa →



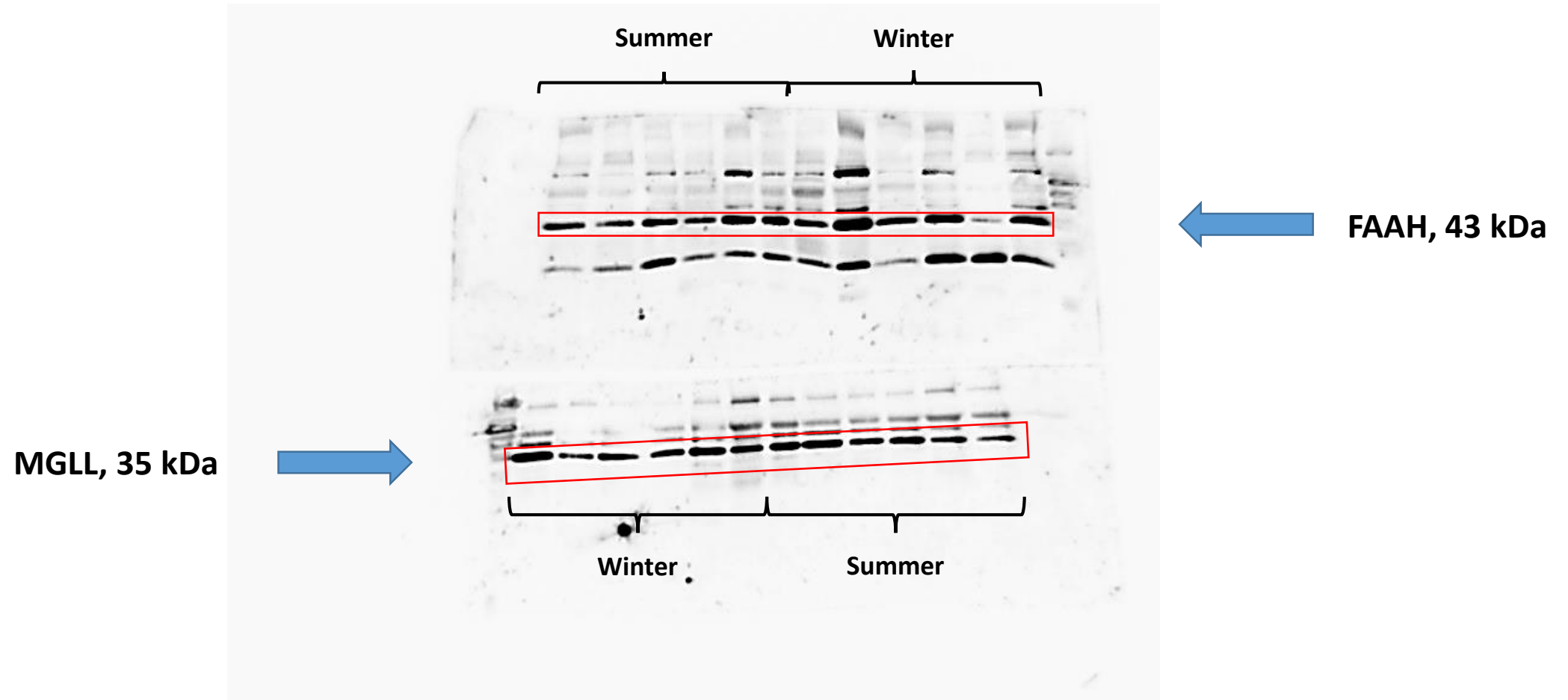
Second run. This was done with another marker in the middle. We presented the above blot even though the background is murky



CB2 Cooled vs. not cooled (not shown)

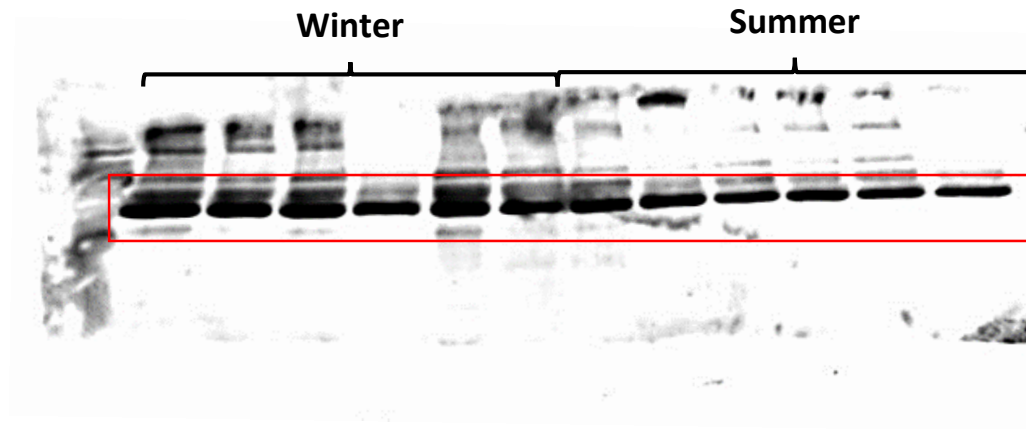


FAAH and MGLL proteins Cooled vs. not cooled (shown in Fig 3)

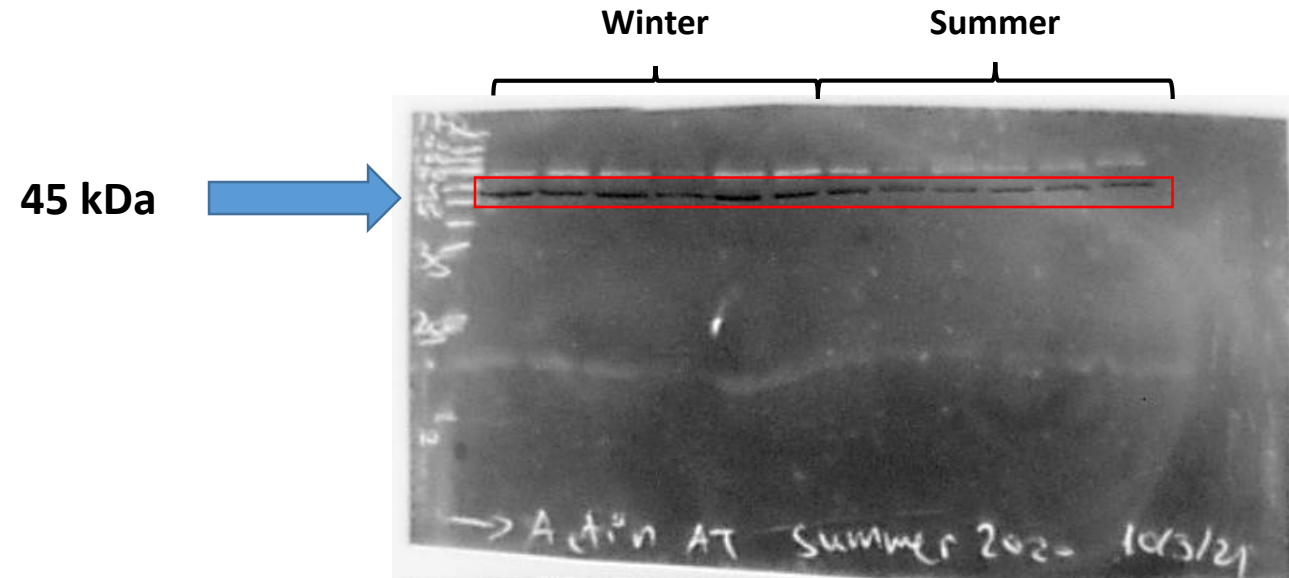


PPAR α protein Cooled vs. not cooled (shown in fig 3)

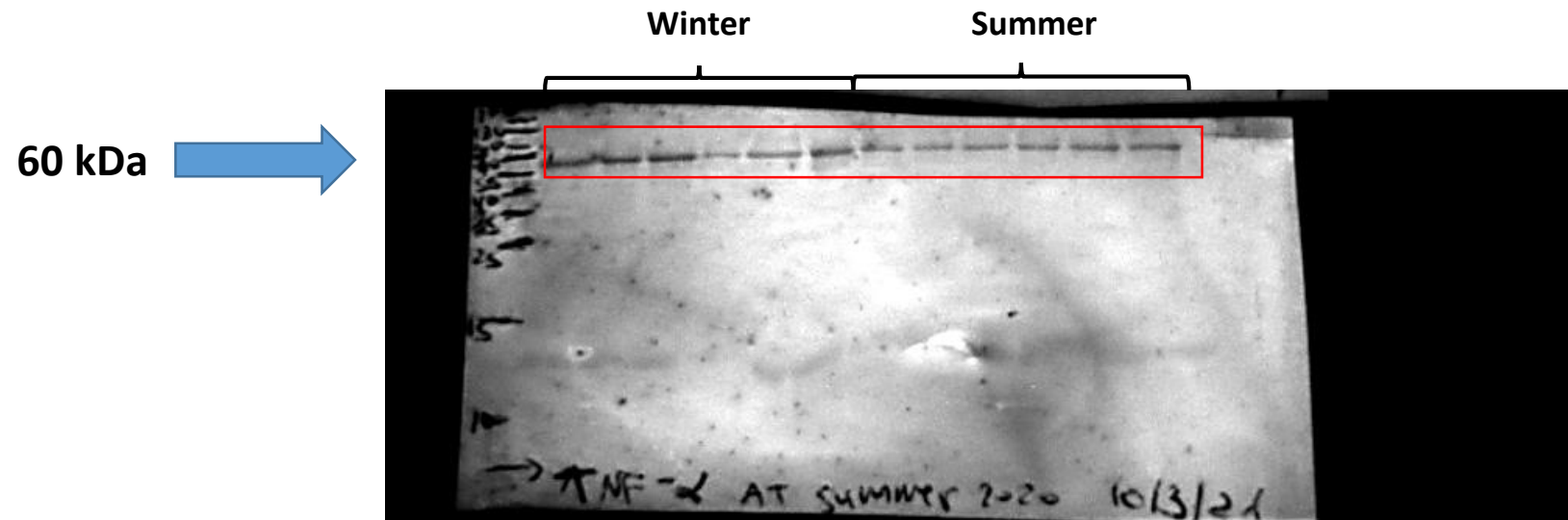
52 kDa



Actin number 2 Cooled vs. not cooled (shown in fig 3)



TNF α protein Cooled vs. not cooled (Shown in fig 4)



Actin number 1 and TRPV1 proteins Cooled vs. not cooled (shown in Fig 4)

