

Supplementary File S1

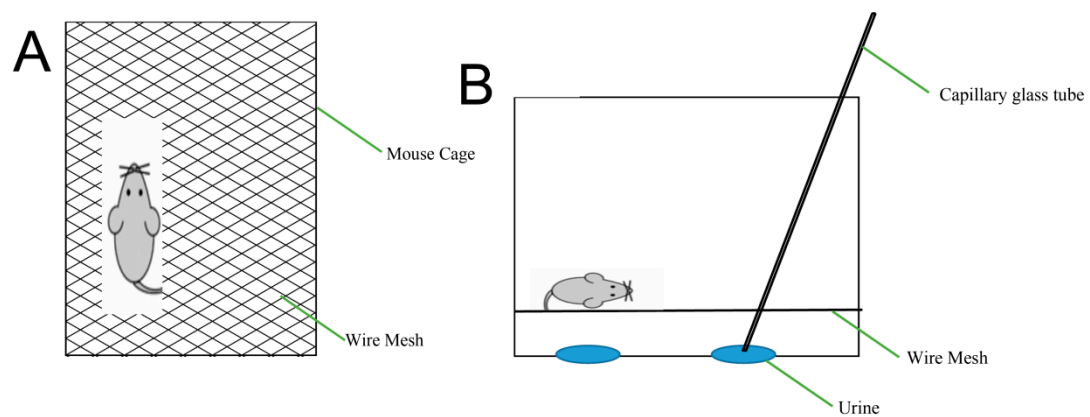


Figure S1 Schematic diagram of the device used for urine collection. (A) Mouse was placed in a clean cage, the cage was covered with a wire mesh (0.5×0.5 cm) about 2 cm from the bottom. (B) After the mice urinated, the urine was aspirated with a disposable capillary glass tube and transferred to a centrifuge tube. When mice urinated, the urine contaminated by feces was discarded in the urine collection procedure.

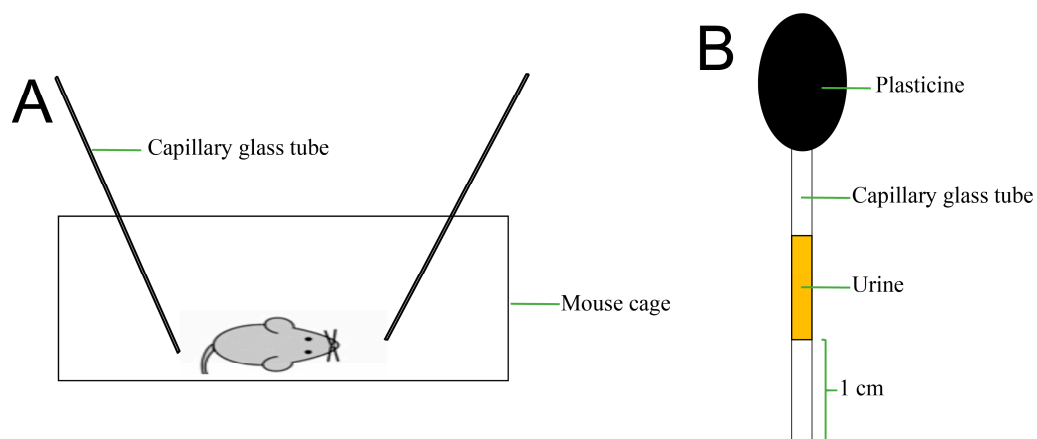


Figure S2 Schematic diagram of the device used for behavioral test. (A) In the behavioral test, female mice was placed in a clean cage, capillary glass tubes with urine samples from infection group and control group were presented to the mouse through the cage cover. (B) The capillary glass tube carried 2 μ L of urine, and one end of the capillary was sealed with plasticine. The liquid bottom was about 1 cm away from the capillary tip.