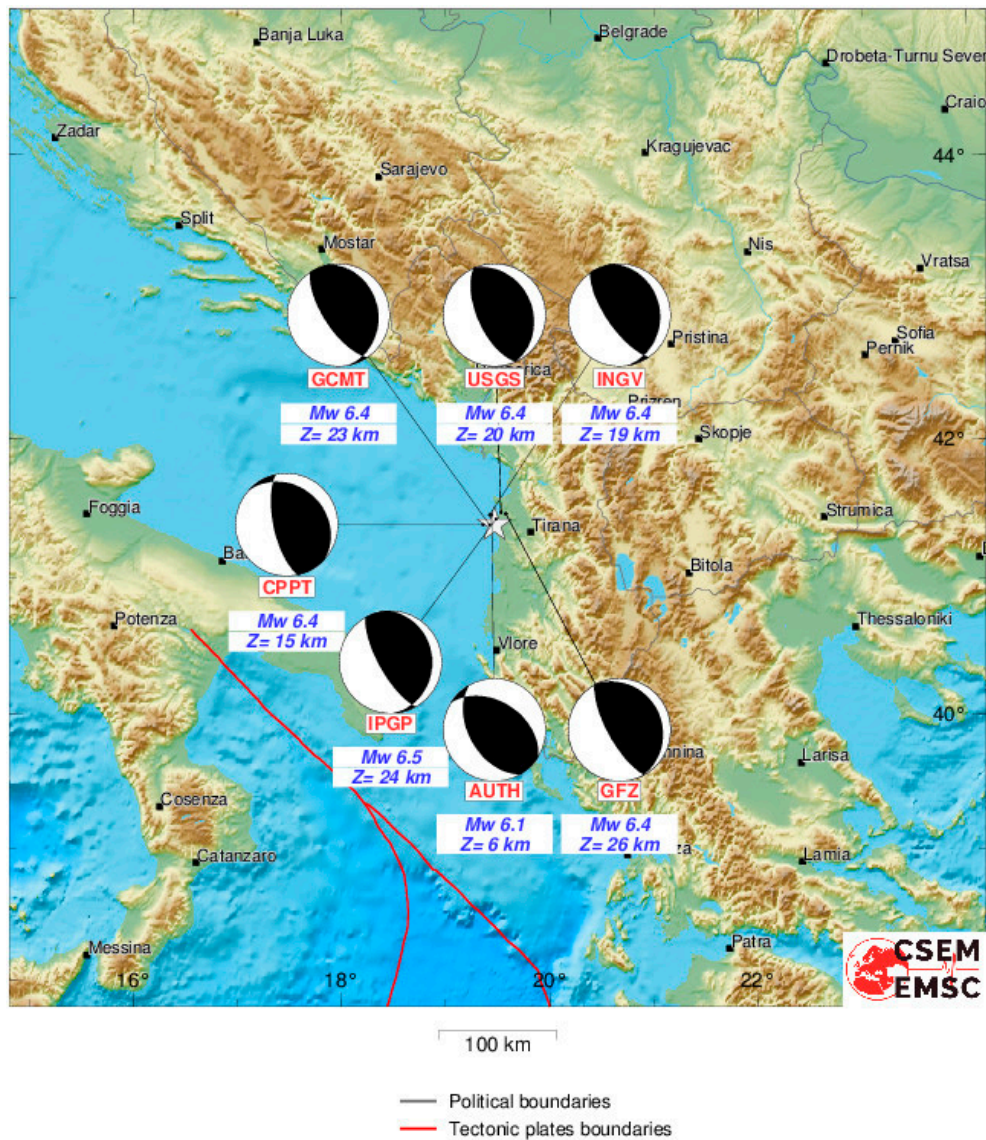
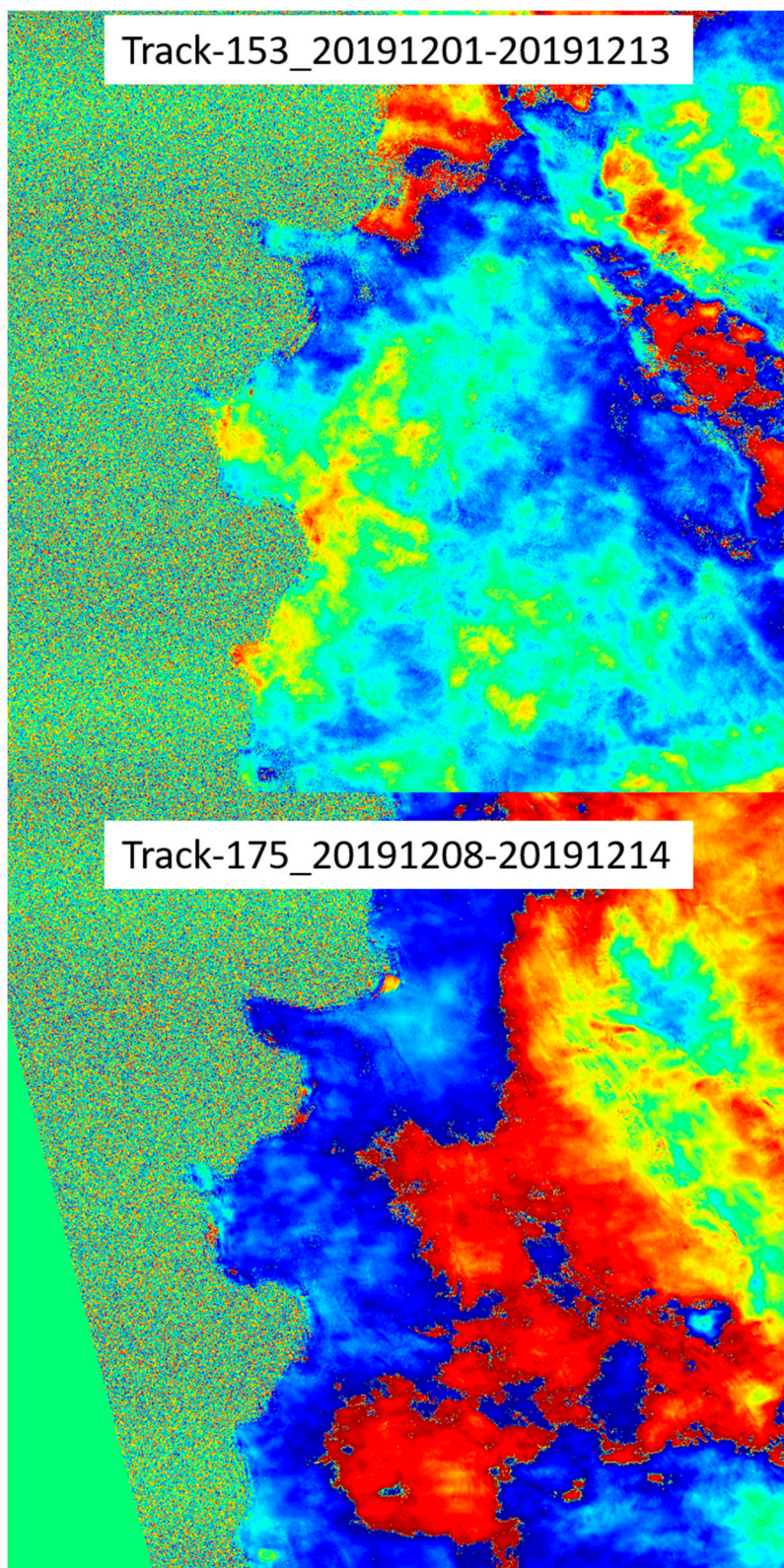


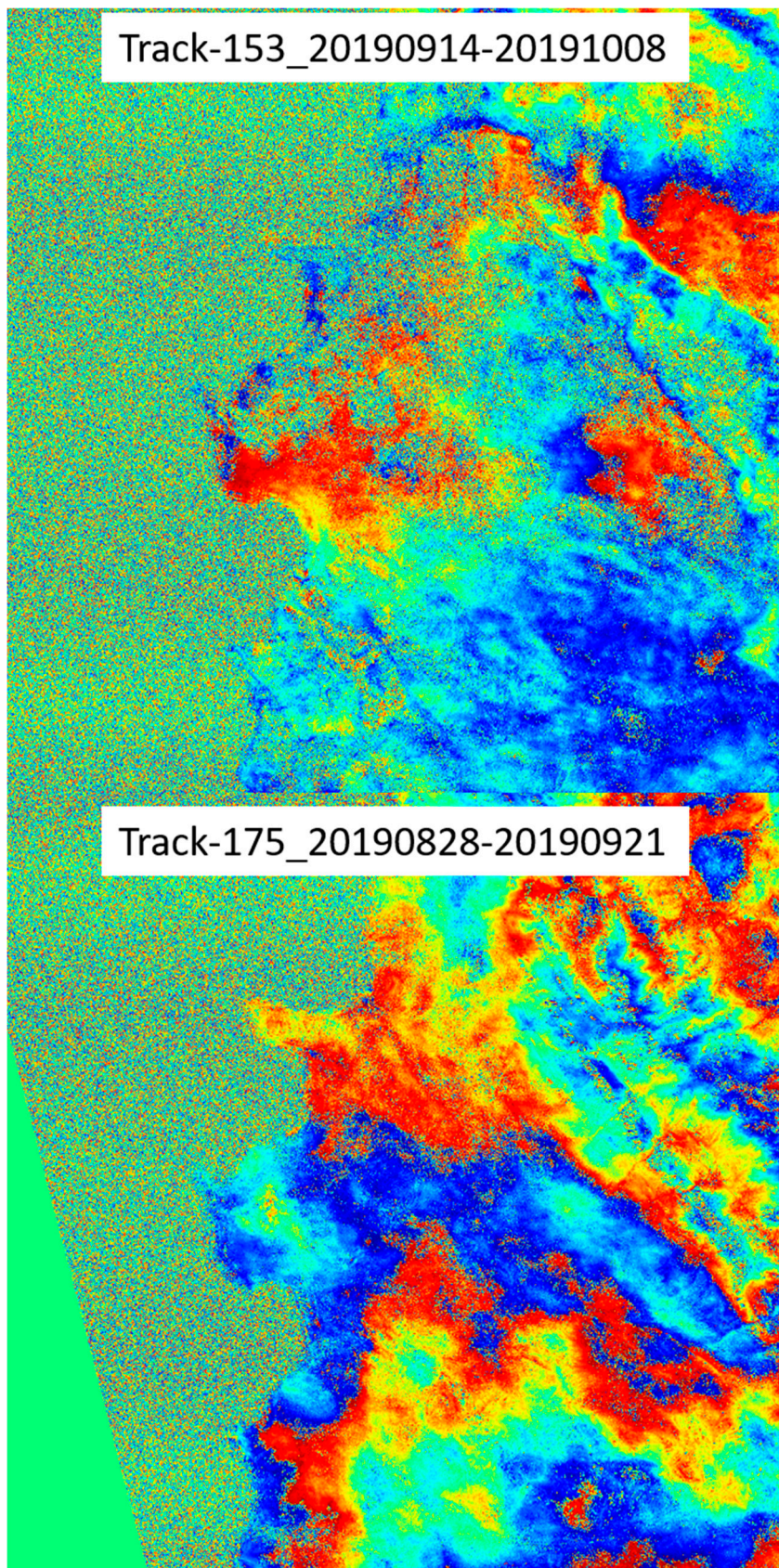
Supplementary material.



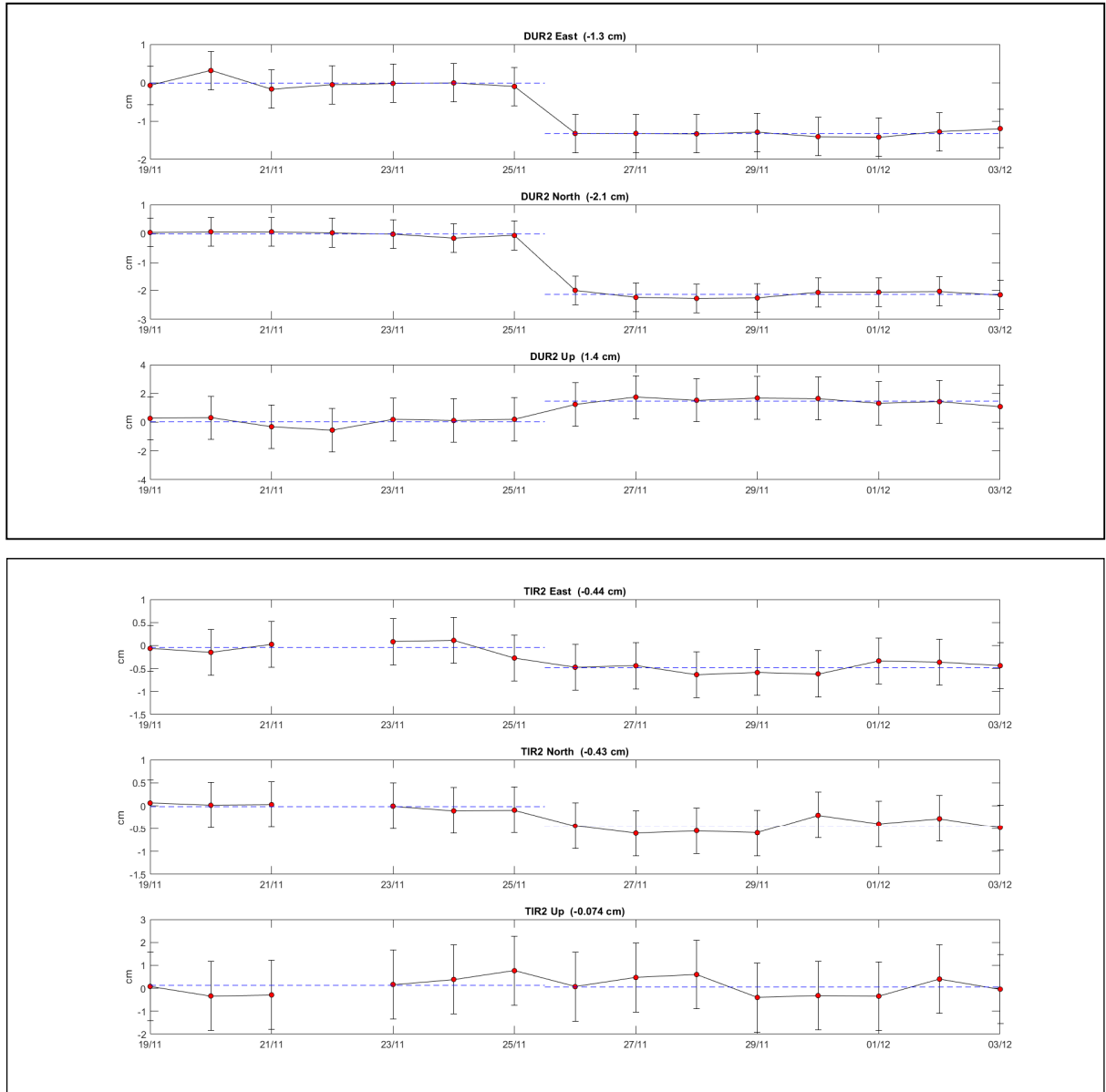
Supplementary Figure S1. EMSC map showing focal mechanisms published by various agencies (last accessed on May 11, 2020).



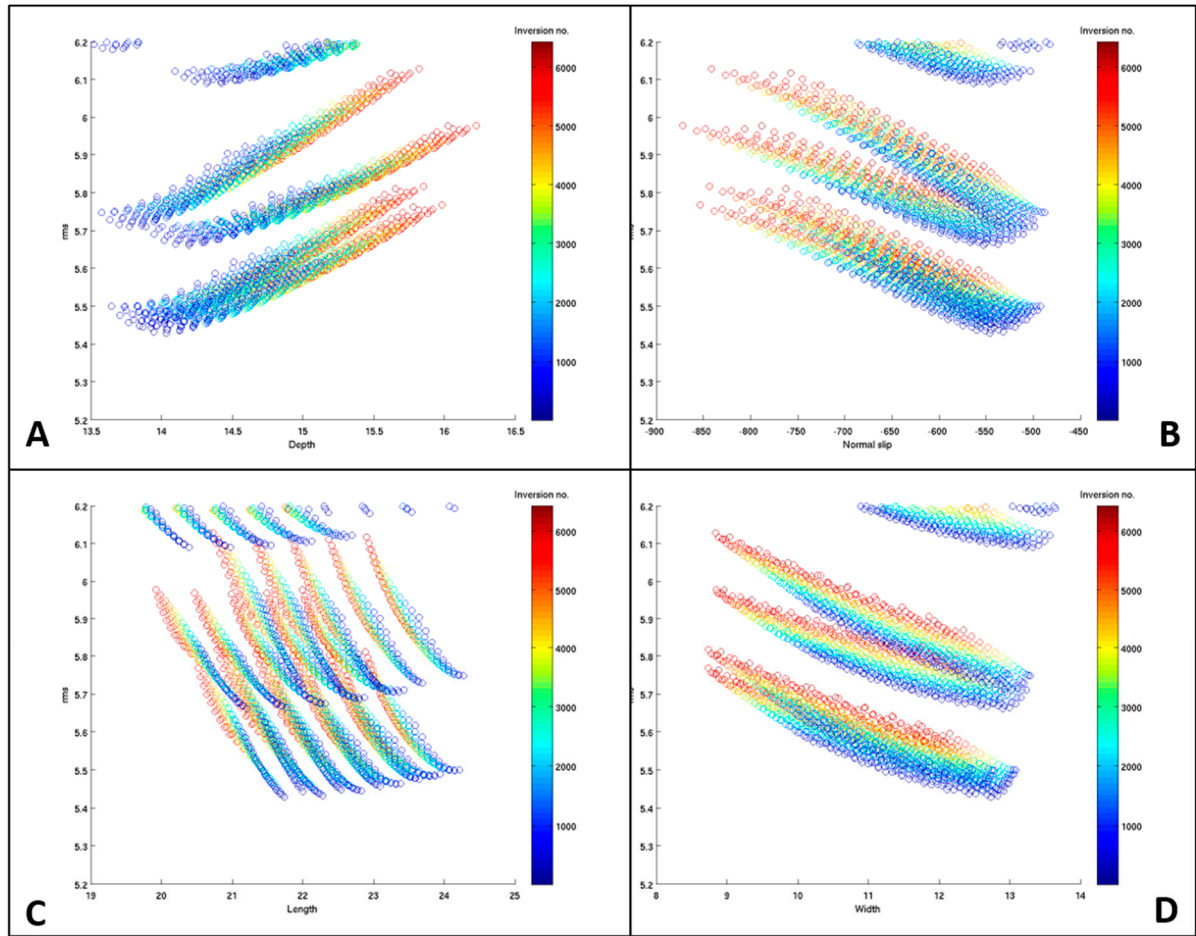
Supplementary Figure S2. Sentinel 1 wrapped interferogram tracks 153 (descending) and 175 (ascending) of the Durrës area showing no ground deformation during the postseismic period up to Dec. 14, 2019.



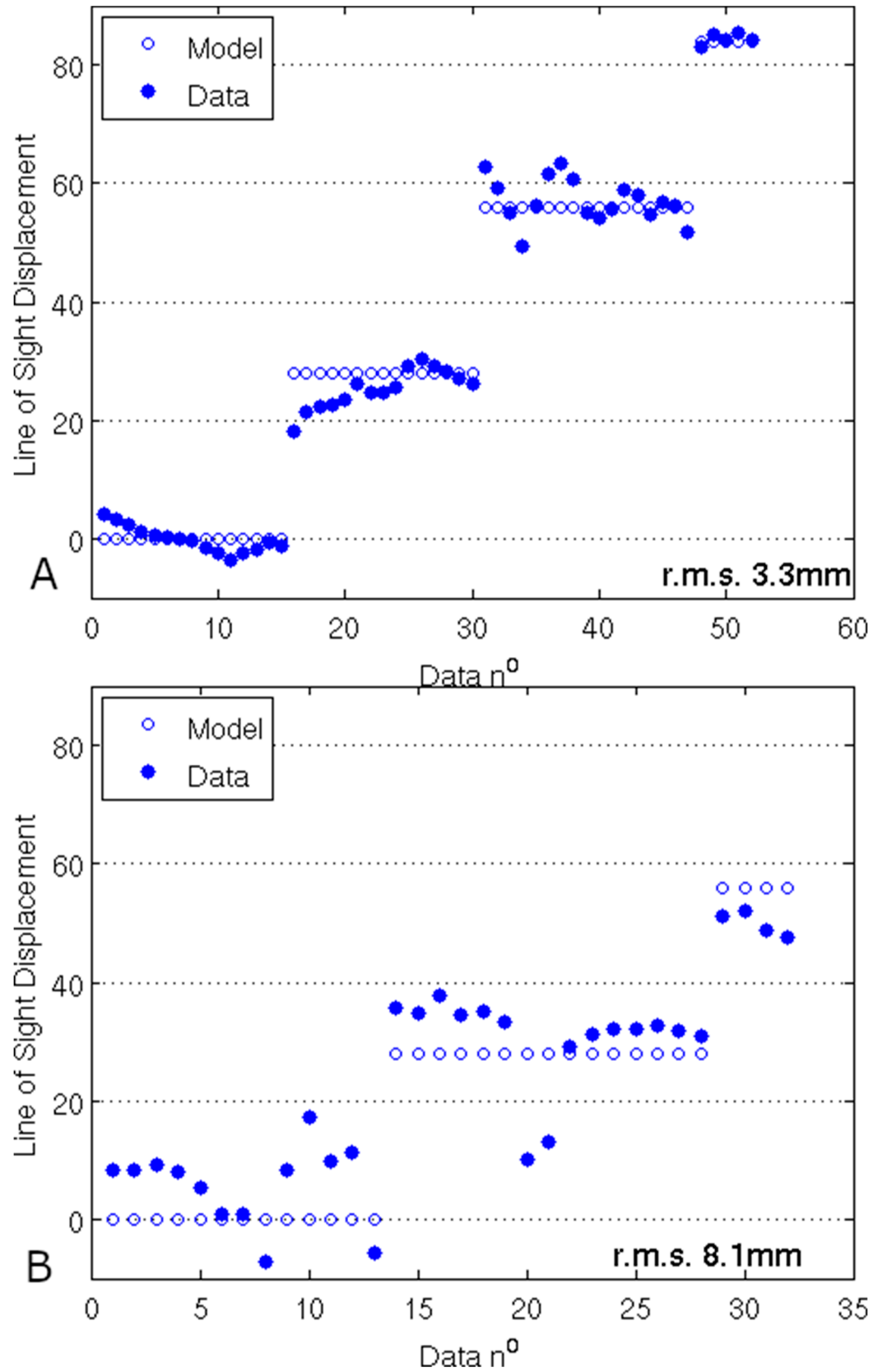
Supplementary Figure S3. Sentinel 1 wrapped interferogram tracks 153 (descending) & 175 (ascending) of the Durrës area showing no ground deformation due to the Sept. 21, 2019 ($M_w=5.7$) foreshock.



Supplementary Figure S4. Coseismic offsets at two GNSS stations (DUR2 & TIR2) at the East, North, Up components, respectively. Red dots represent the daily station position at each component. The station coordinates are approximately at: DUR2 (Lat. 41.3156° – Lon. 19.451°) and TIR2 (Lat. 41.3357° – Lon 19.8095°). Station locations are shown in Fig. 1.



Supplementary Figure S5. Graphs showing inversion results for several fault parameters: A) top-fault depth (km) B) slip (m) – for reverse C) length (km) and D) width (km). Y-axis shows the r.m.s. misfit.



Supplementary Figure S6. Graphs showing fit of the modelling of the line-of-sight (LOS) displacements picked on the observed fringes, a) for ascending track 175 and b) for descending track 153.