

Figure S1: Fracture map (left) used in analysis of P_{xy} values and cross polar photomicrograph (right) of section HS_IC_5P.

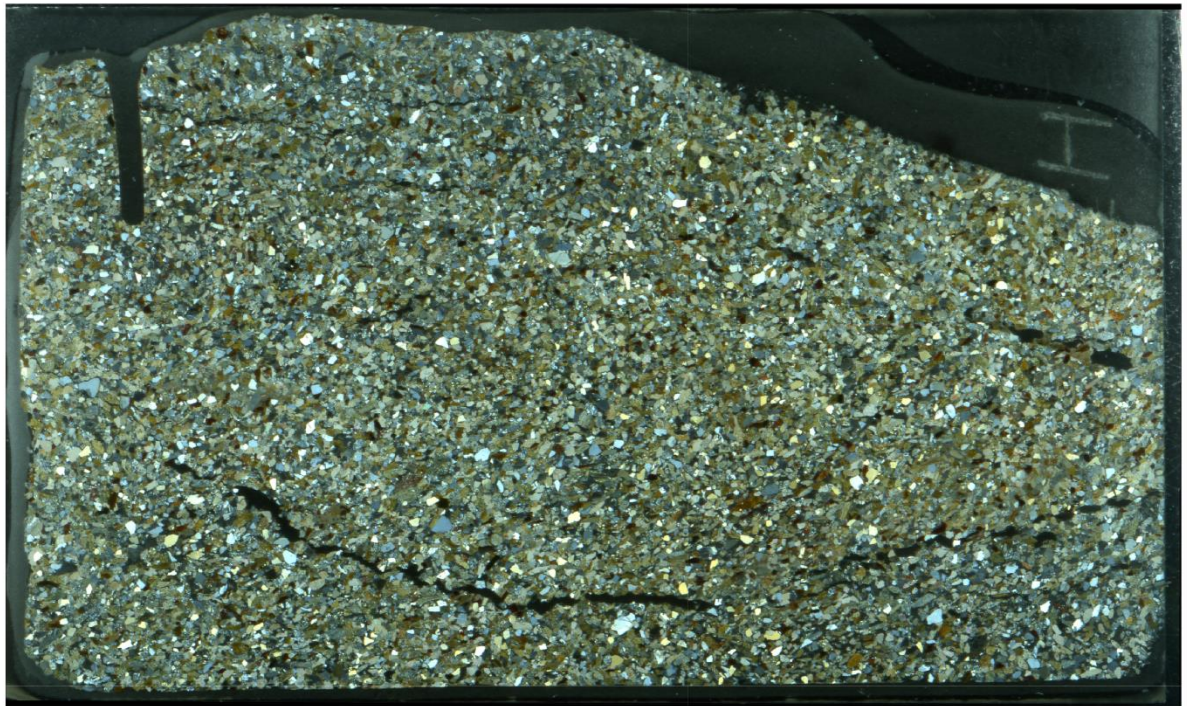
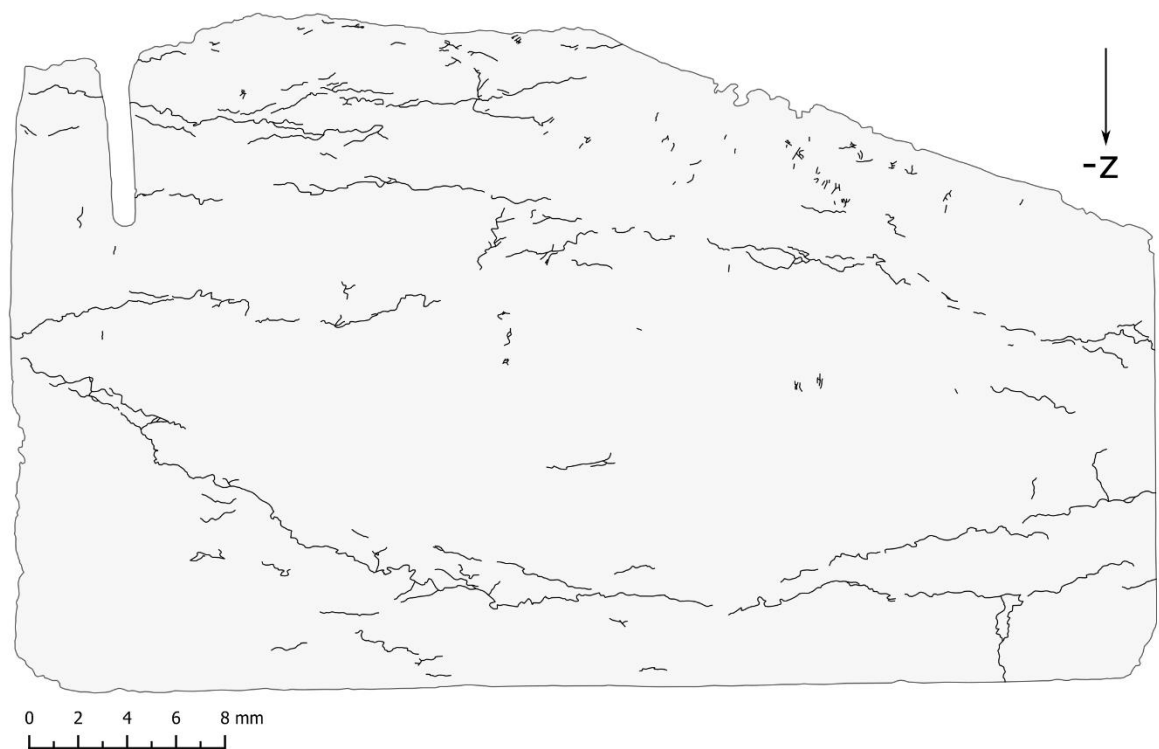


Figure S2: Fracture map (top) used in analysis of P_{xy} values and cross polar photomicrograph (lower) of section HS_IC_RP.

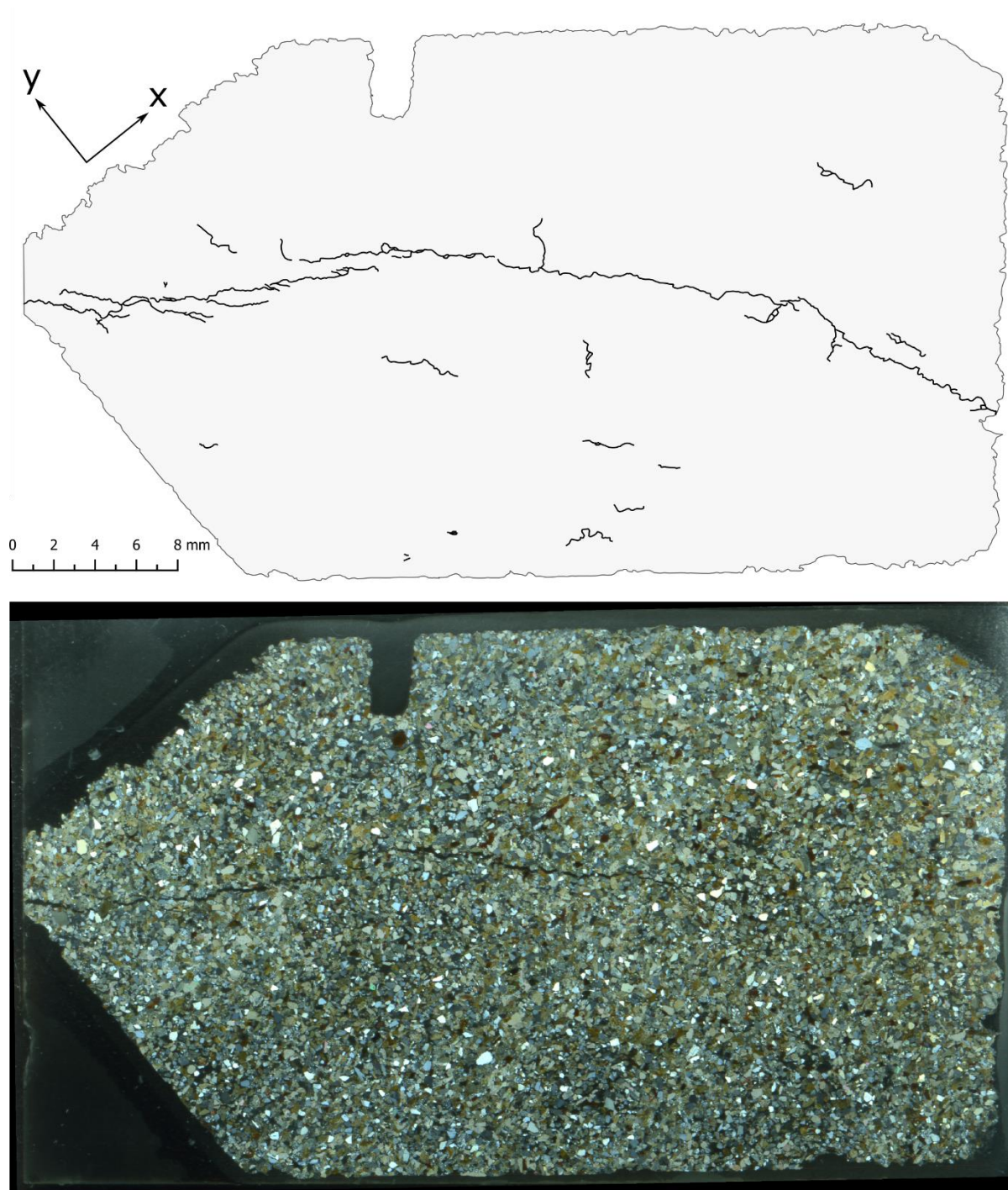


Figure S3: Fracture map (top) used in analysis of P_{xy} values and cross polar photomicrograph (lower) of section HS_RF_1P.

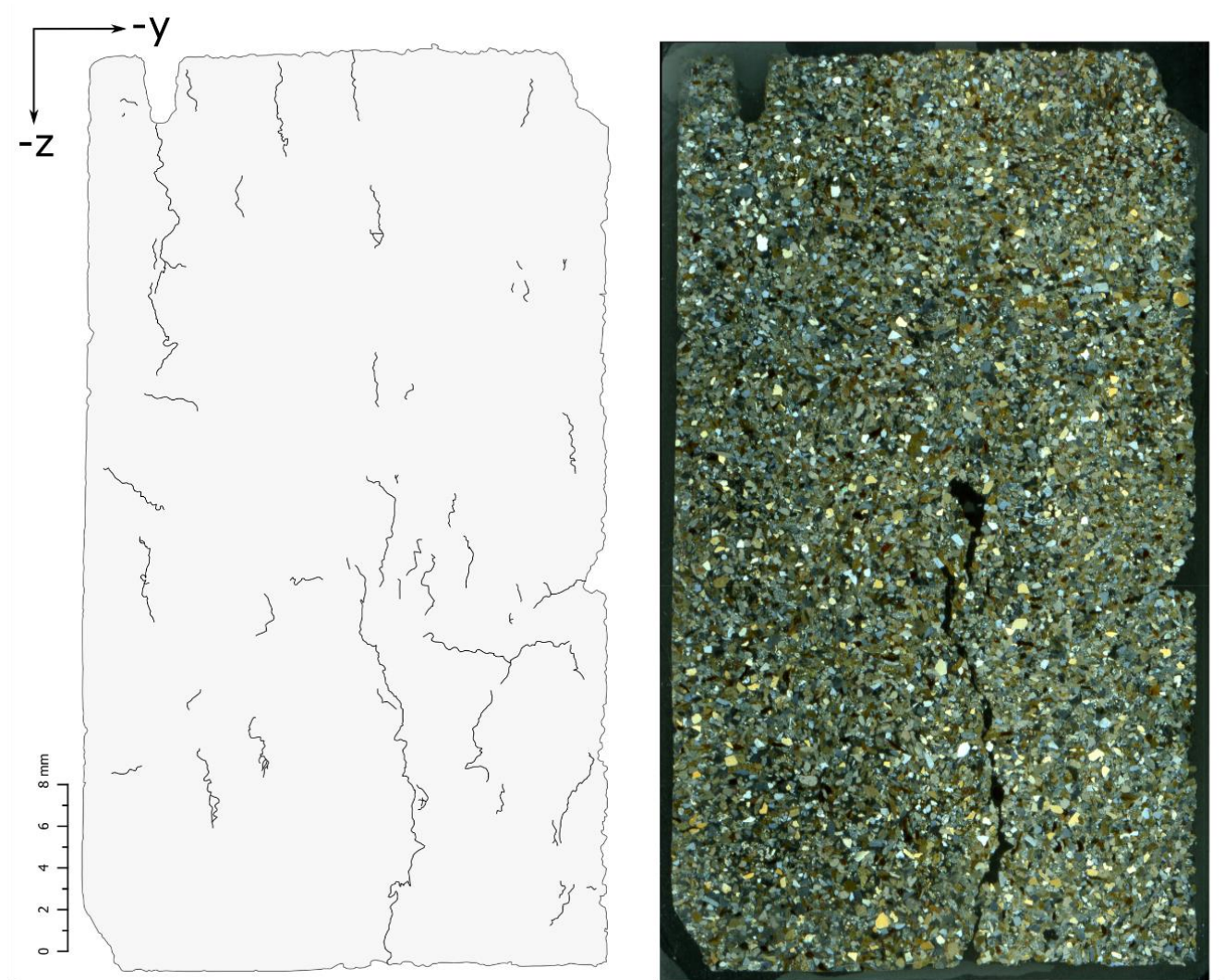


Figure S4: Fracture map (left) used in analysis of P_{xy} values and cross polar photomicrograph (right) of section HS_RF_2P.

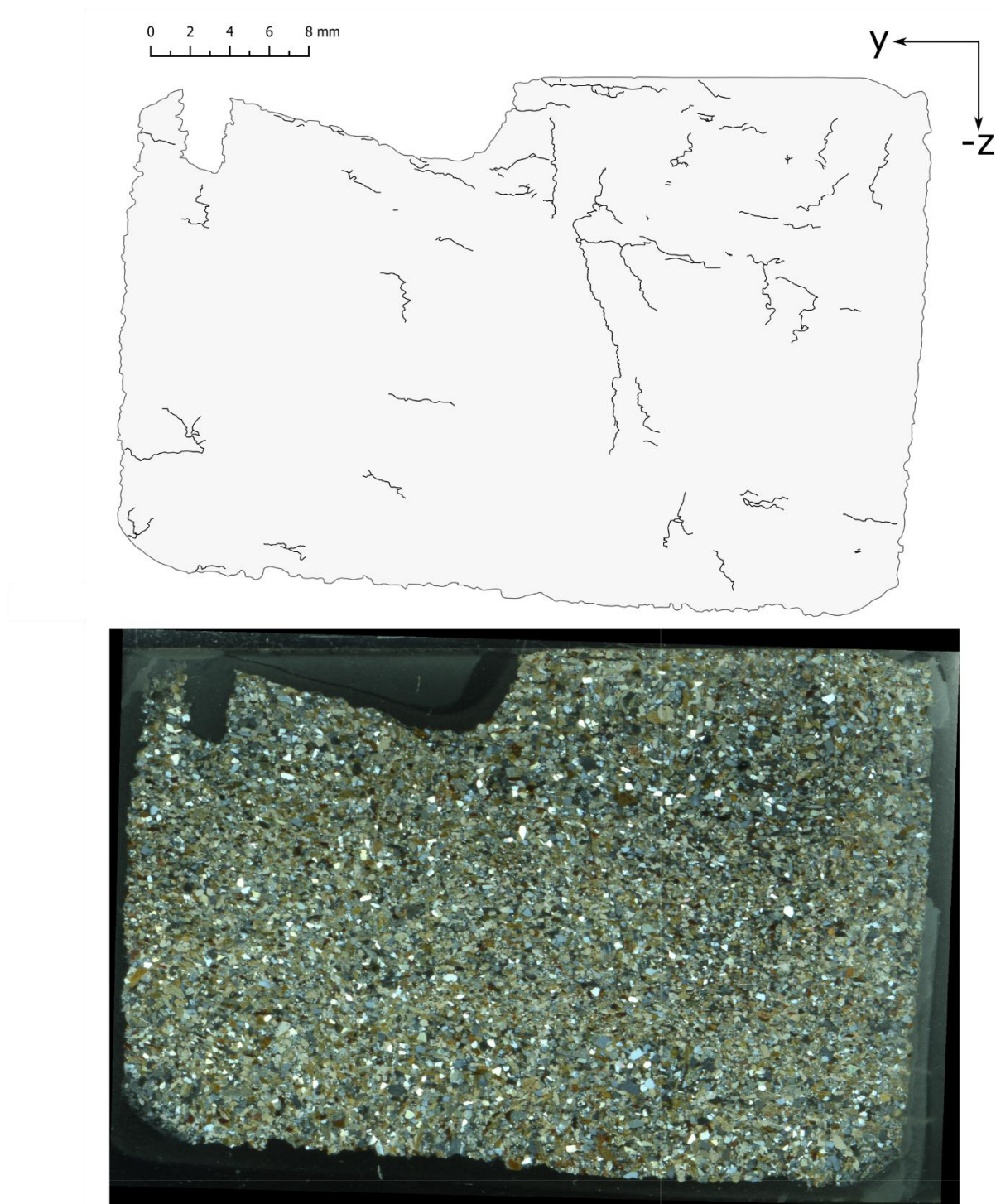


Figure S5: Fracture map (top) used in analysis of P_{xy} values and cross polar photomicrograph (lower) of section HS_FS_4P.

Figure S6: 3D render of target block showing the minimum extent of internal fractures (orange planes).

Table S1: Spreadsheet of raw data from the facet and surface trace analysis.