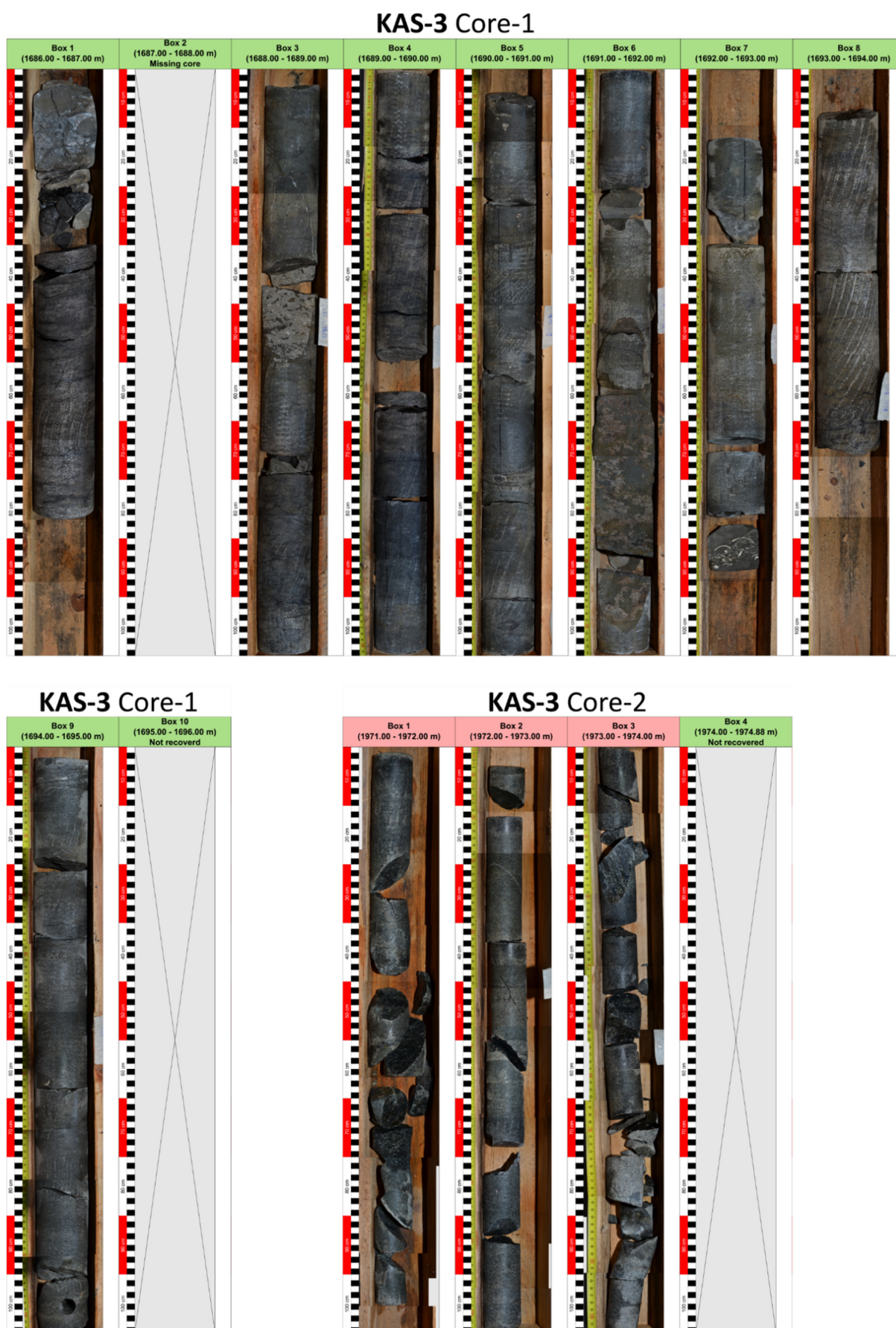


**Figure S1.** Core photographs from KAS-1 well (#C-1 and #C-2).



**Figure S2.** Core photographs from KAS-3 well (#C-1 and #C-2). The red colours in #B1,2 and 3 of #C-2, highlight the uncertainty for the order of the core rubbles in these boxes.



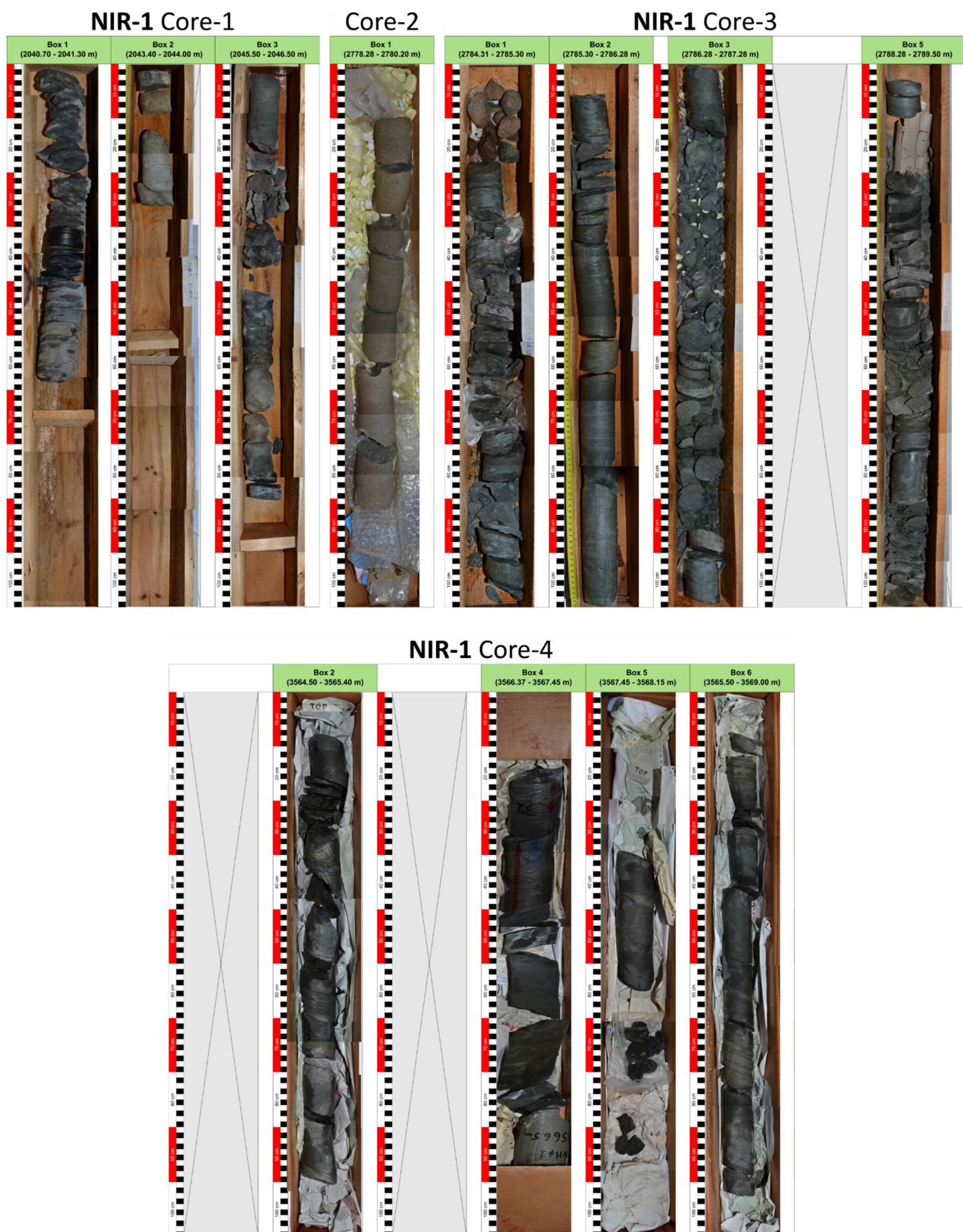


Figure S3. Core photographs from NIR-1 well (#C-1, #C-2, #C-3 and #C-4).



## PO-1 Core-1



## PO-2 Core-2



Figure S4. Core photographs from PO-1 well (#C-1 and #C-2).



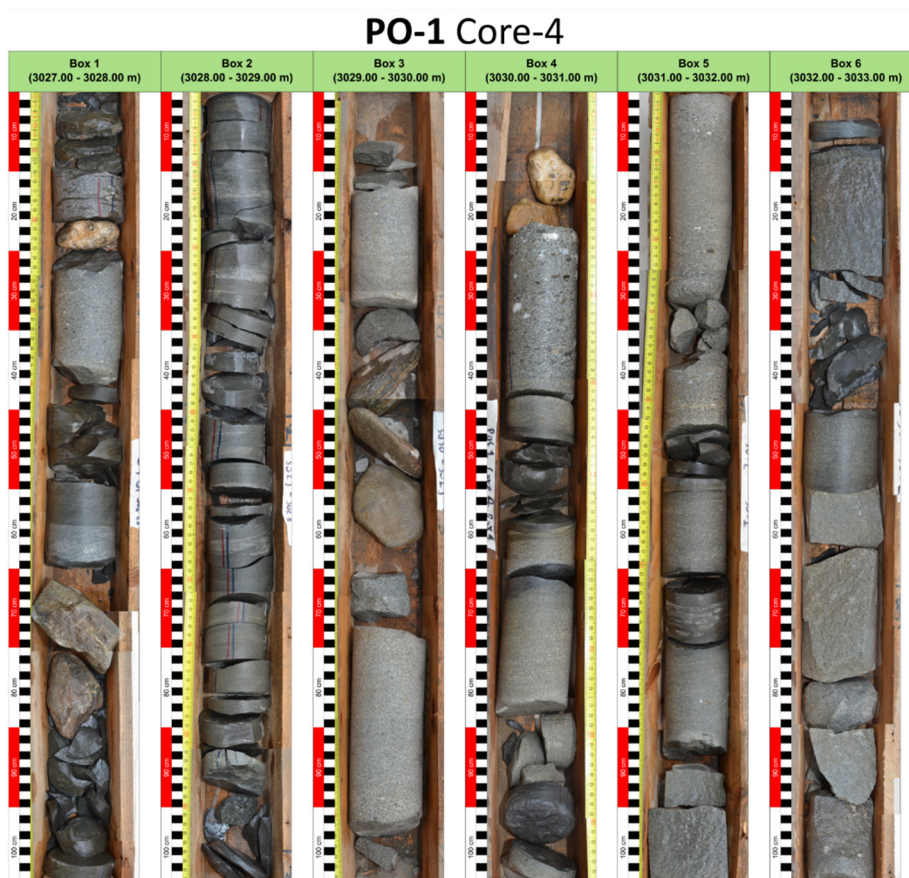
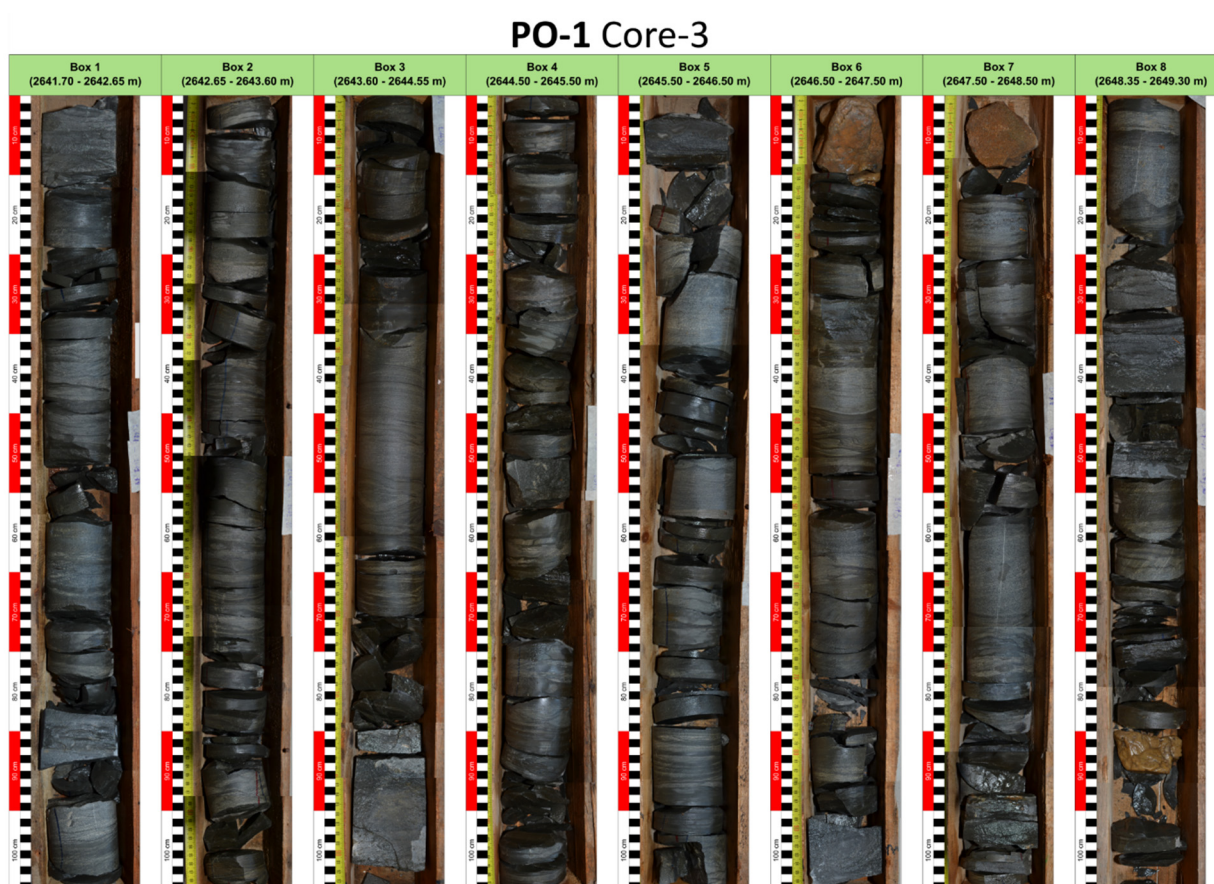


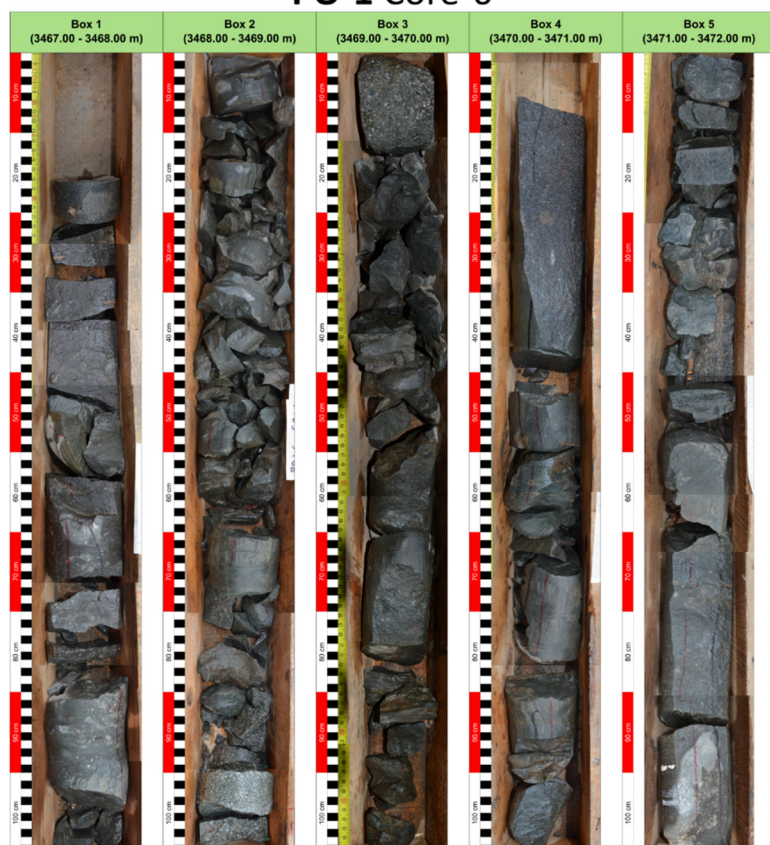
Figure S5. Core photographs from PO-1 well (#C-3 and #C-4).



## PO-1 Core-5



## PO-1 Core-6



## PO-1 Core-7



Figure S6. Core photographs from PO-1 well (#C-5, #C-6 and #C7).



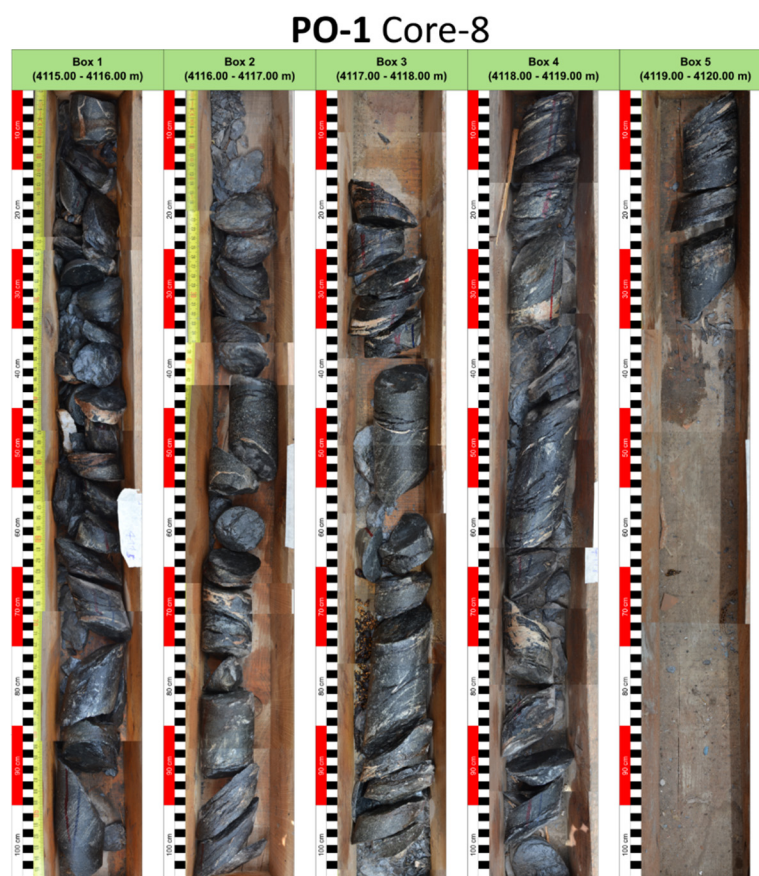


Figure S7. Core photographs from KAS-1 well (#C-8).

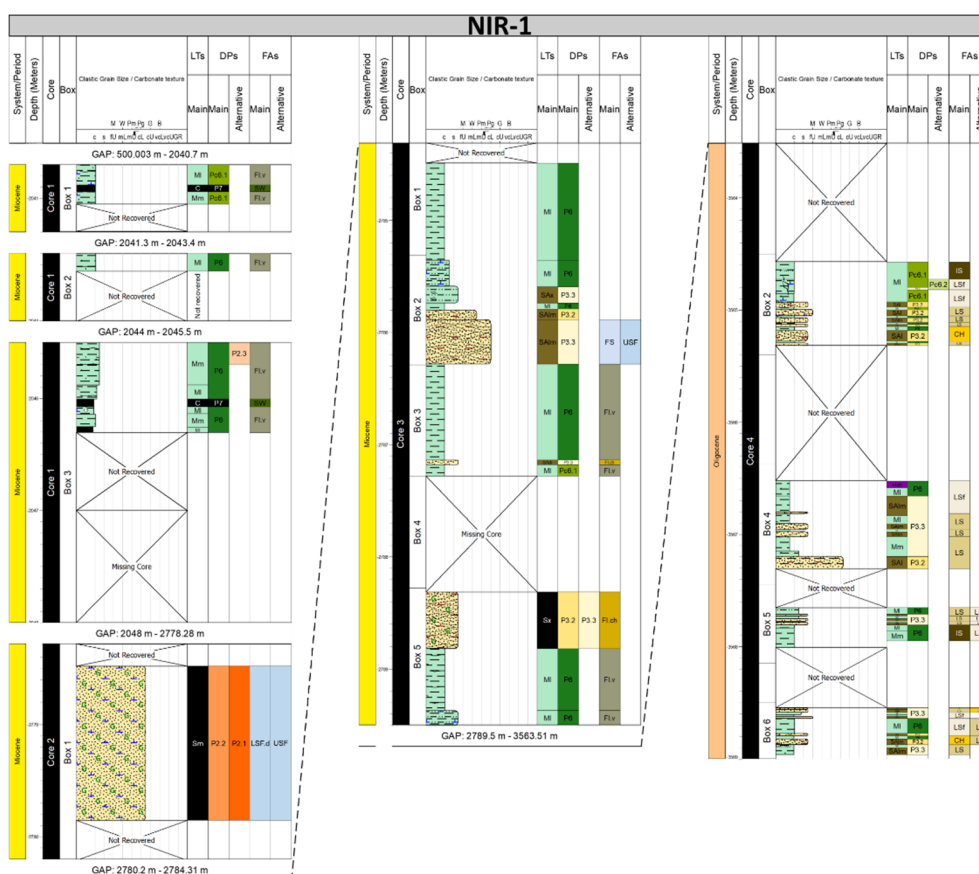


Figure S8. Core descriptions from NIR-1 well.

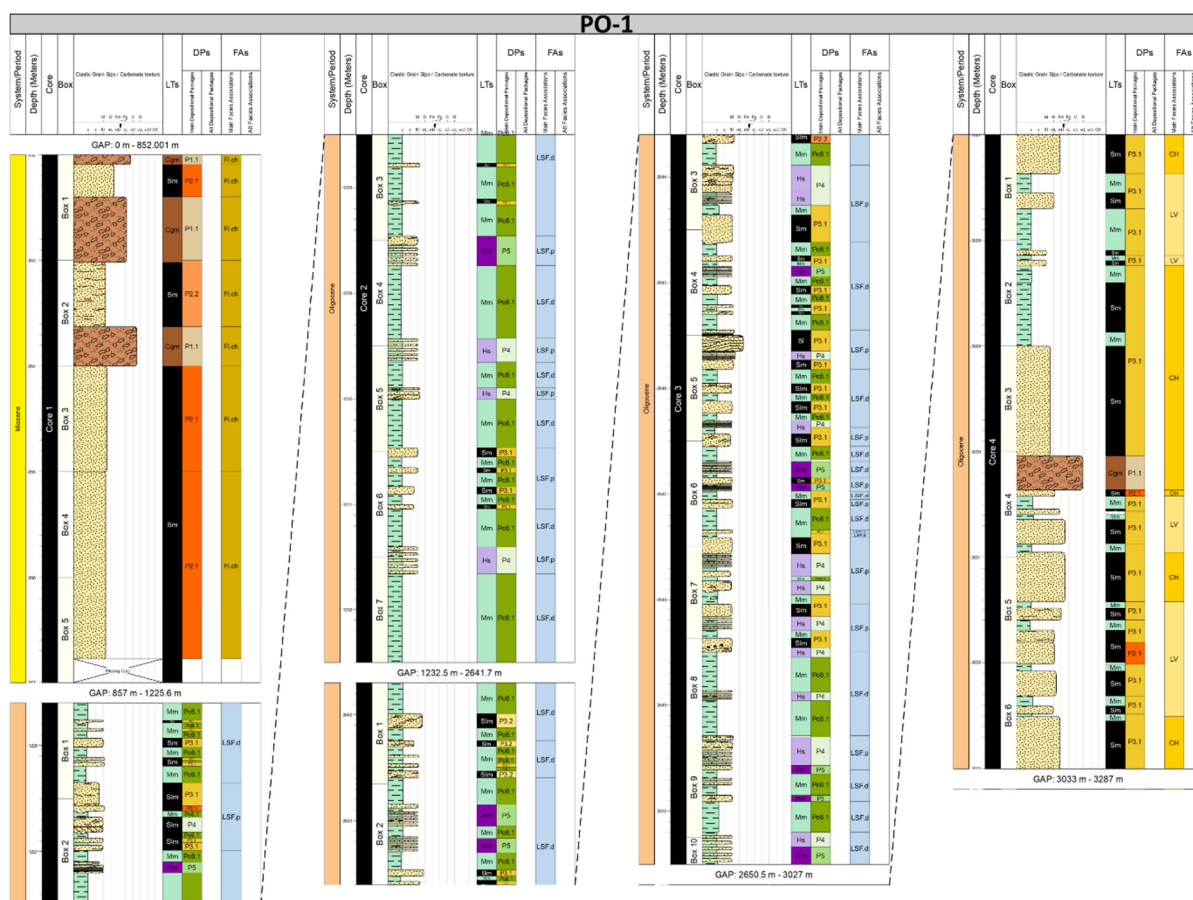


Figure S9. Core descriptions from PO-1 well (#C1-#C4).

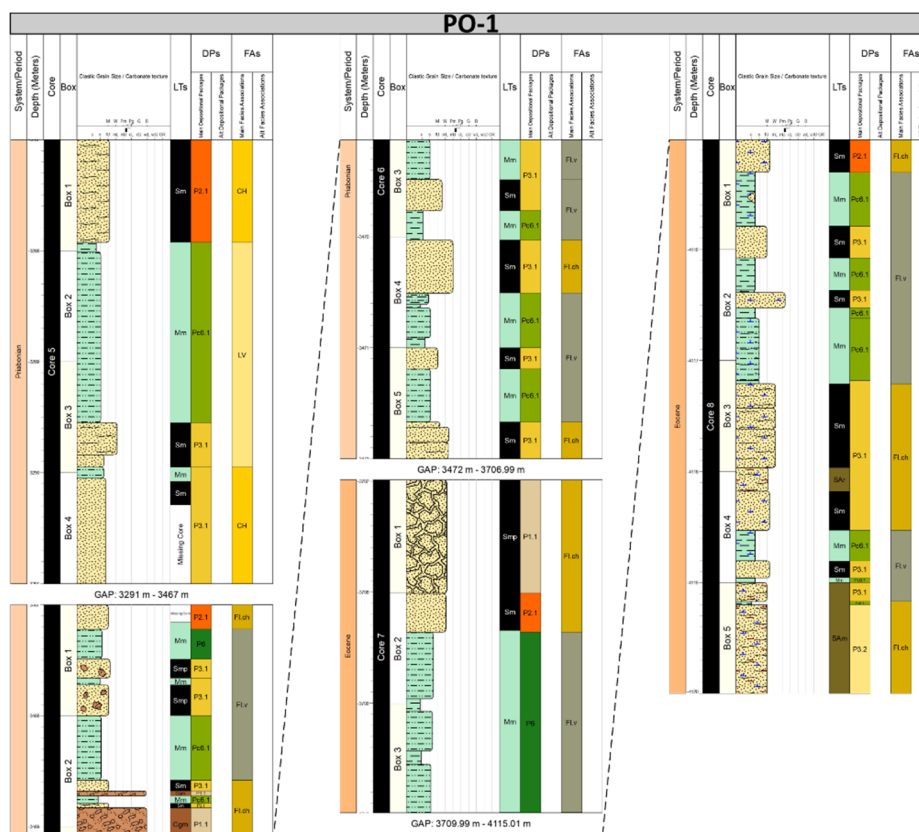


Figure S10. Core descriptions from PO-1 well (#C5-#C8).



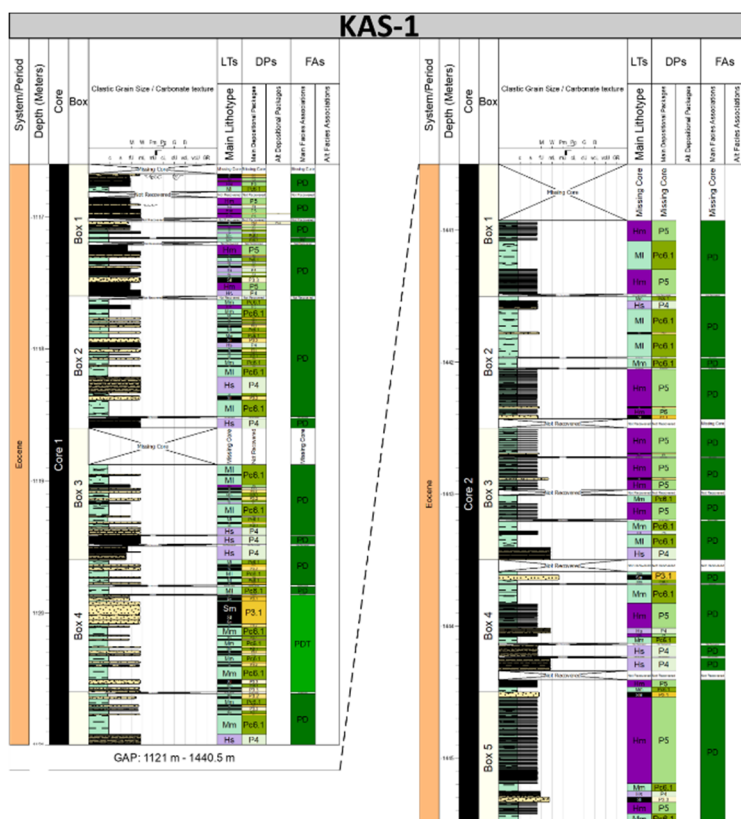


Figure S11. Core descriptions from KAS-1 well.

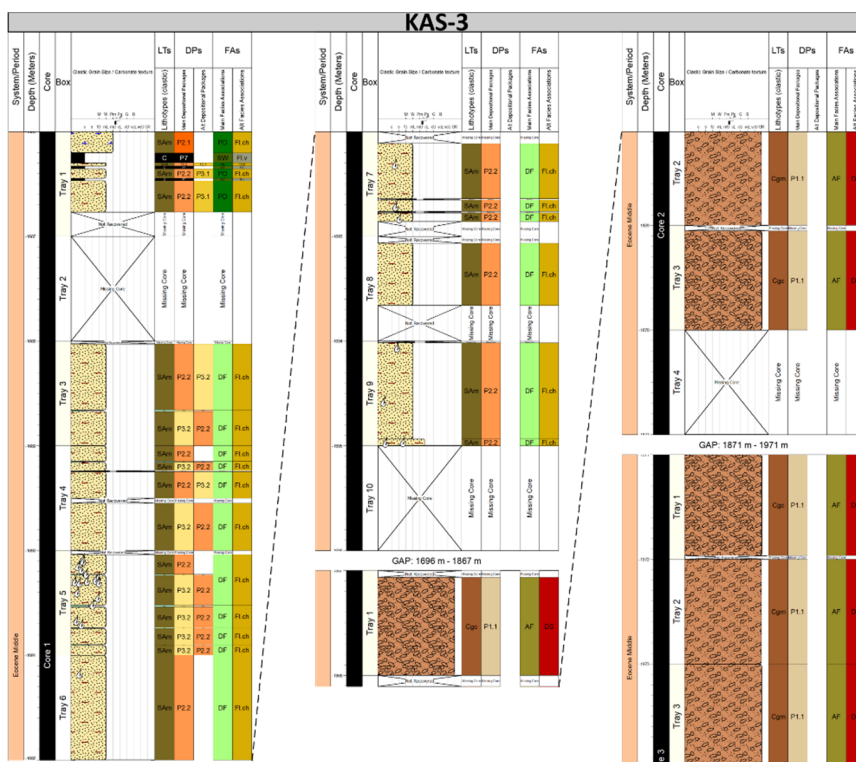


Figure S12. Core descriptions from KAS-3 well.








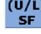


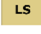









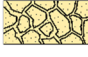



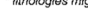
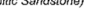
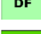







LITHOLOGY *		DEPOSITIONAL PACKAGES		FACIES ASSOCIATIONS					
	Sandstone		Siltstone		CH Channel-fill undifferentiated	<div>Deepwater-turbidites</div>		FS Foreshore	<div>Shallow marine</div>
	Fossiliferous Sandstone		Mudrock (incl. Claystone, Shale and Slate)		LV Levee			(U/L) SF (Upper/Lower) shoreface (.p:proximal, .d:distal)	
	Trough cross bedded Sandstone		Sand-dominated heterolithics		LS Lobe sandsheet			OTZ Offshore transition zone	
	Argillaceous Sandstone		Mud-dominated heterolithics		LSf Lobe sandsheet fringe			B/OS Basin/Offshore	
	Calcareous Sandstone		Matrix-supported Conglomerate		IS Inter-lobe mudrock sheets			SL Slump	
	Glaucinitic Sandstone		Clast-supported Conglomerate		MB Mouthbar	<div>Delta</div>		Fl.ch Floodplain channel	<div>Fluvial</div>
	Brecciated Sandstone		Coal		DF Delta-front			Fl.v Floodplain valley	
* lithologies might combined (e.g. Calcareous Glaucinitic Sandstone)					PDT Prodelta transition zone			SW Swamp	
					PD Prodelta			B/L Bay/Lagoon	
					AF/SF Aluvian fan sheets / Subaerial fan sheets			DS Debricic sheets	

Figure S13. Core description legend.