

Supplementary Materials

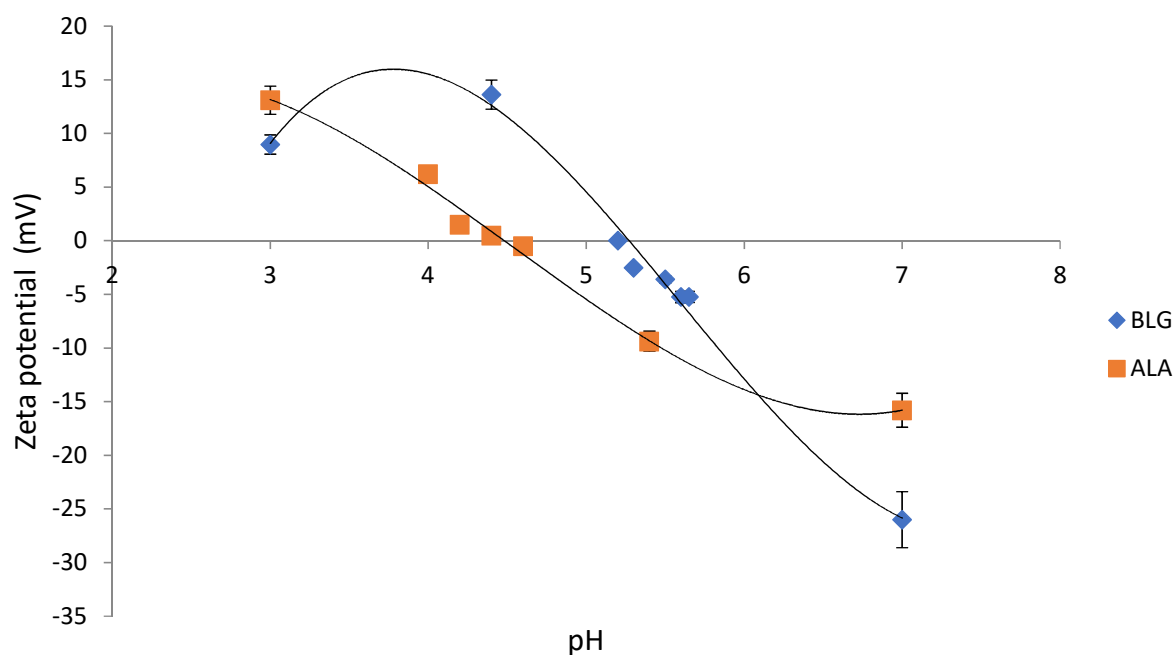


Figure S1. Zeta potential measurement as a function of pH of ALA and BLG (1 g·L⁻¹).

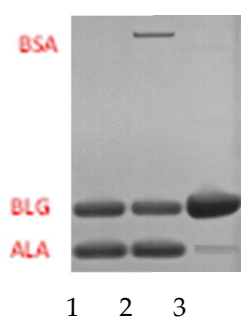


Figure S2. SDS-page carried out on final retentate (4.4. h) after UF by using binary protein mixture (1 g·L⁻¹) pH 3.4 and charged regenerated cellulose membranes. 1: IS (1 g·L⁻¹); 2: internal MW standard; 3: retentate obtained in the UF process after 4.4 h.