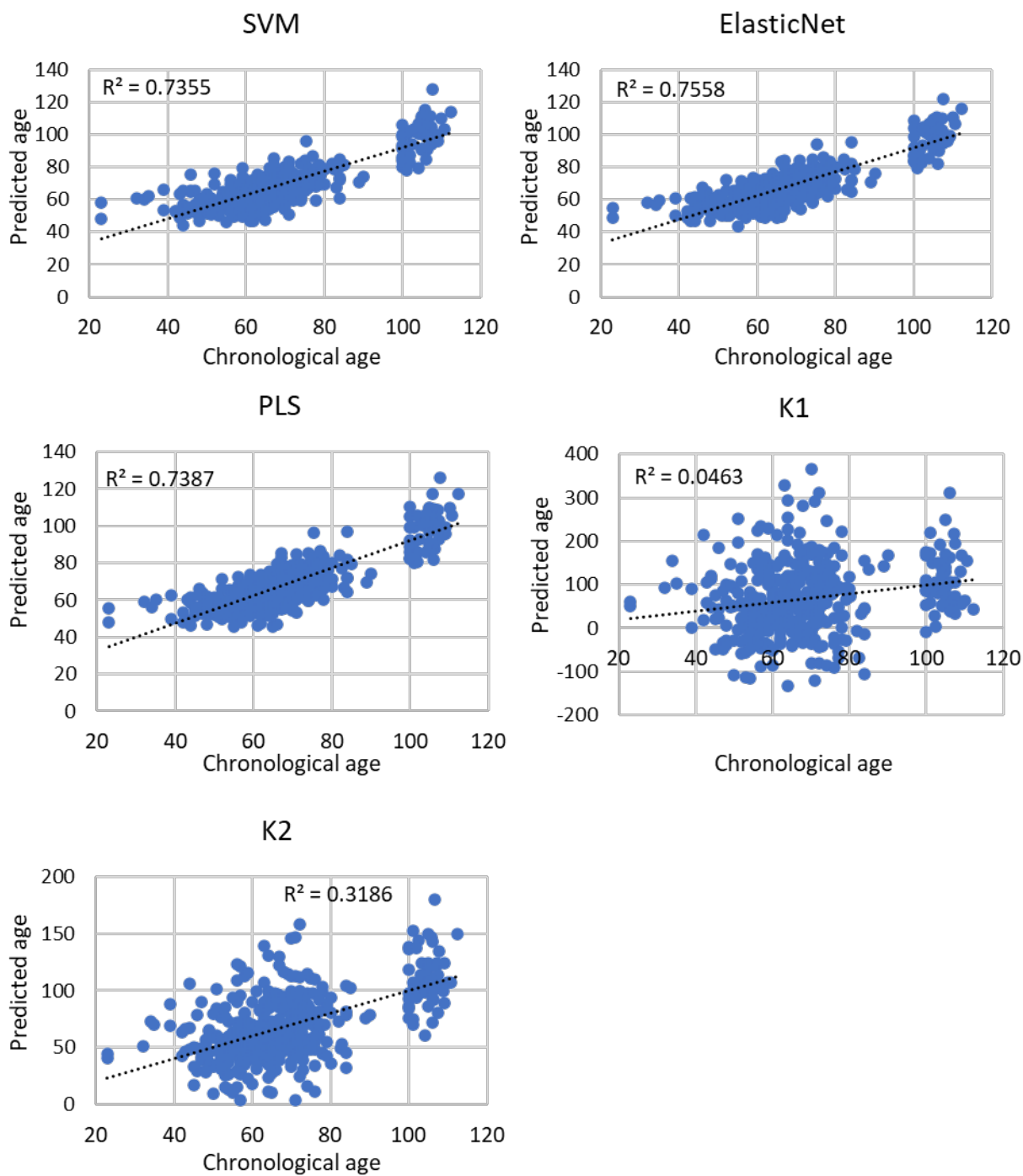
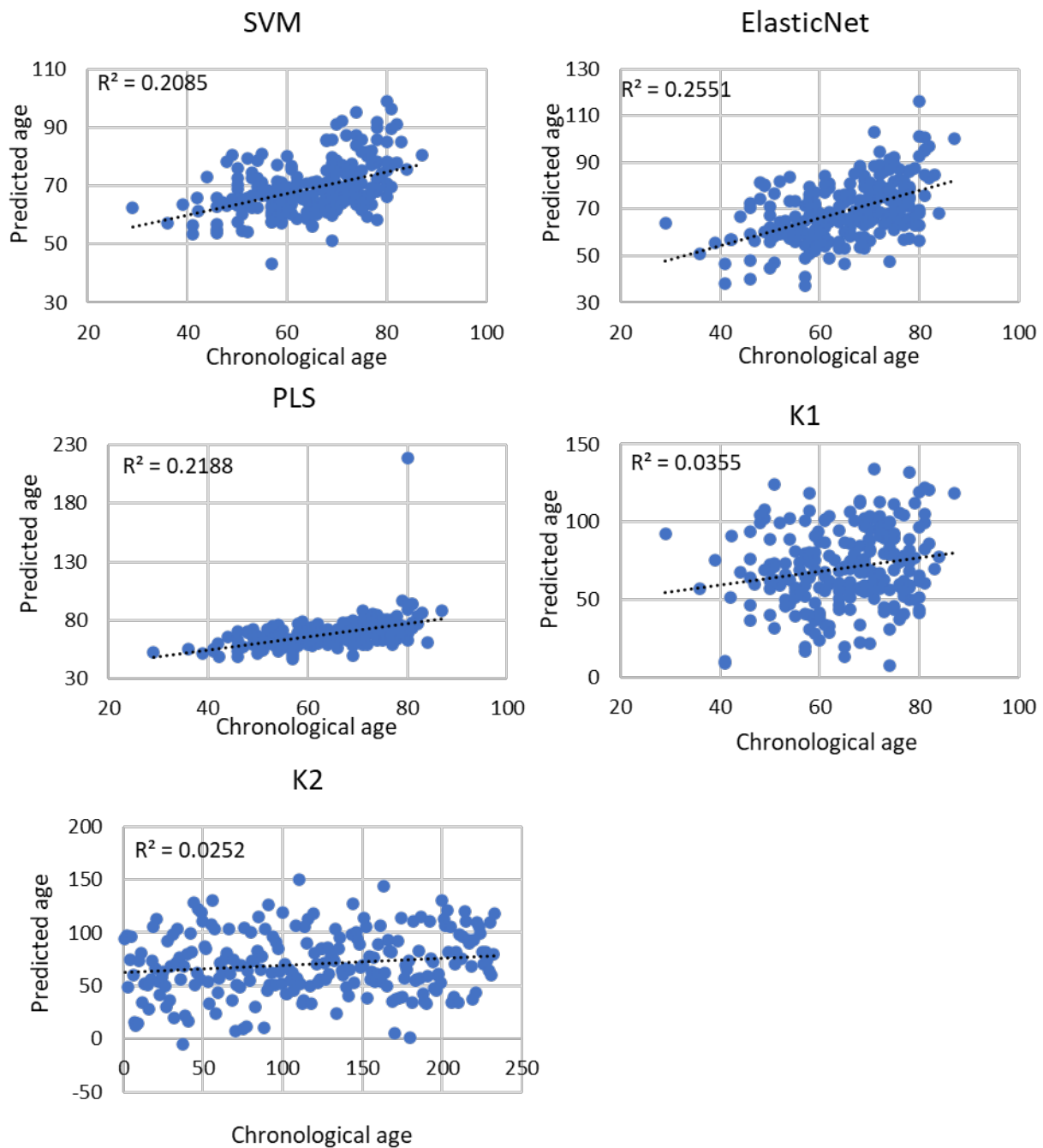


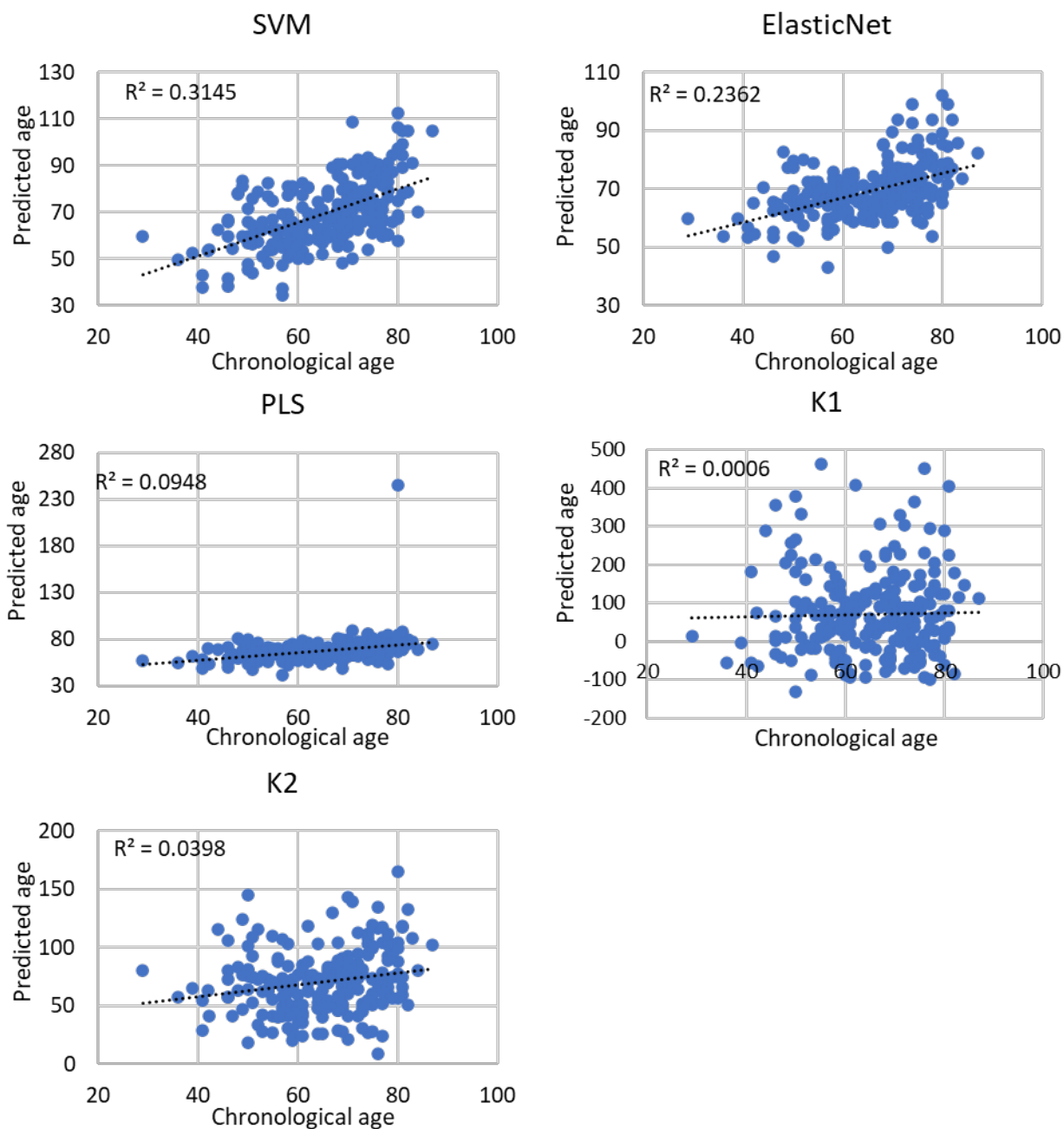
Supplementary Figure S1. Chronological age versus predicted age for the SVM, PLS, ElasticNet and the the Klemeera-Doubal (K1 and K2) models built on binned spectra of CTR subjects.



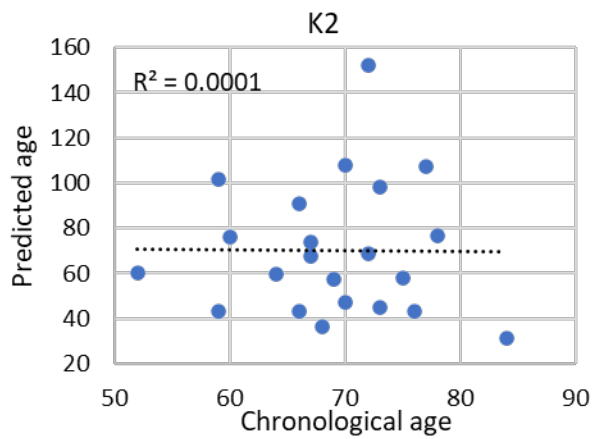
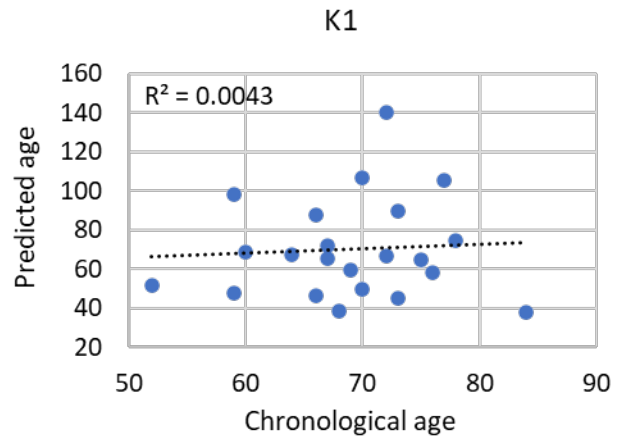
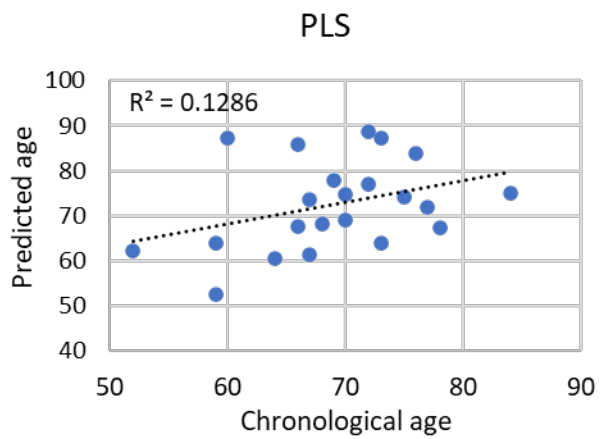
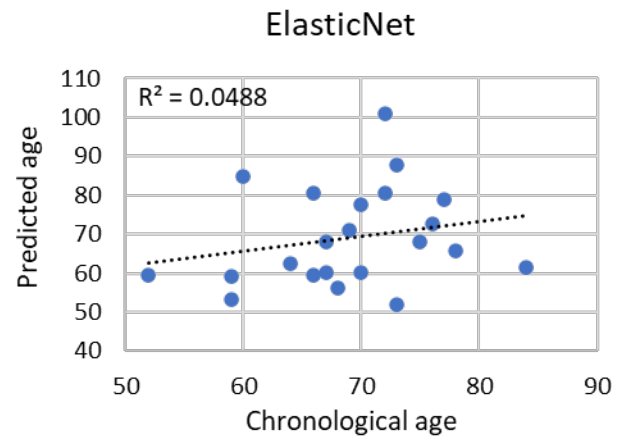
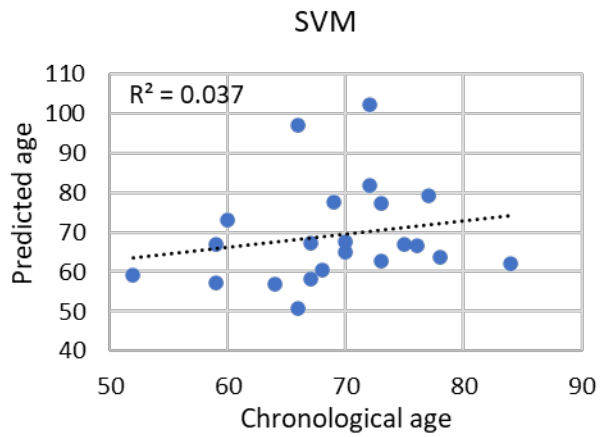
Supplementary Figure S2. Chronological age versus predicted age for the SVM, PLS, ElasticNet and the the Klemmeera-Doubal (K1 and K2) models built on quantified metabolites and lipoproteins matrix of CTR subjects.



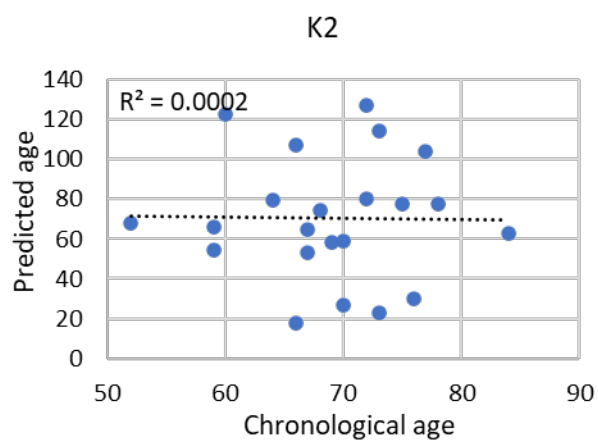
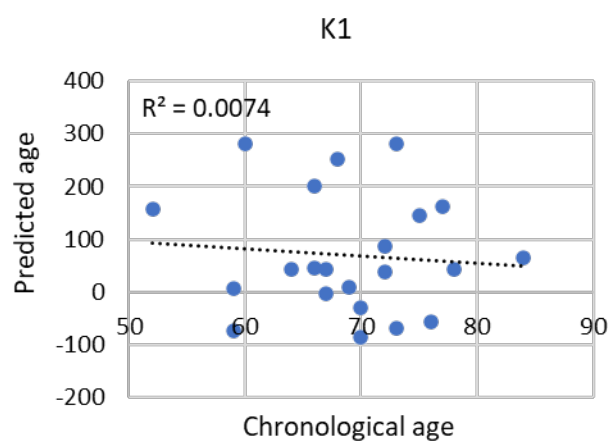
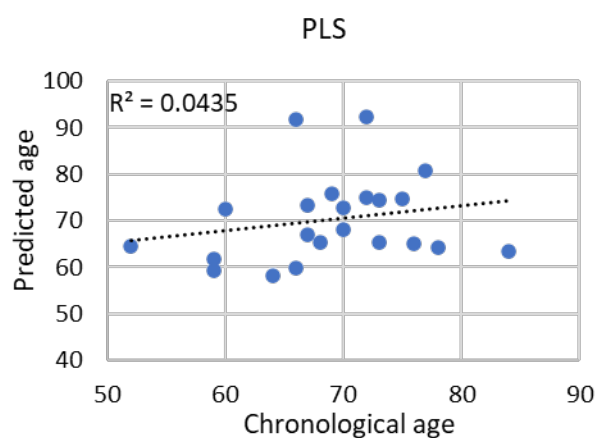
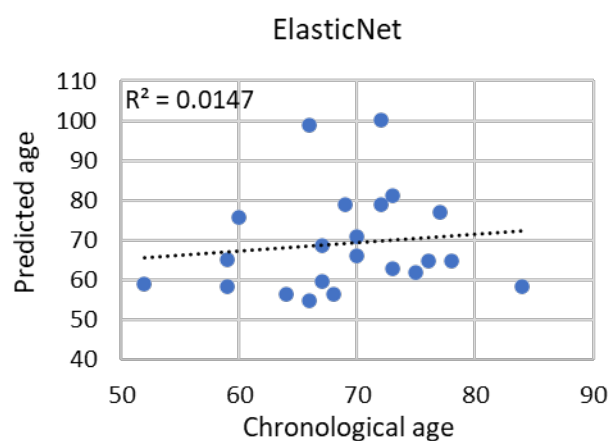
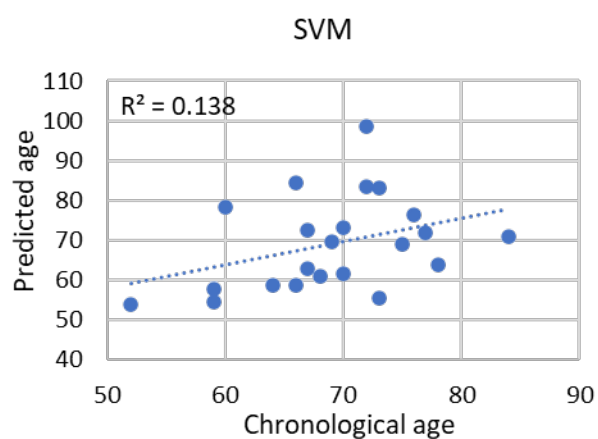
Supplementary Figure S3. Chronological age versus predicted age for the SVM, PLS, ElasticNet and the the Klemeera-Doubal (K1 and K2) models built on binned spectra of dn^2PD patients.



Supplementary Figure S4. Chronological age versus predicted age for the SVM, PLS, ElasticNet and the the Klemeera-Doubal (K1 and K2) models built on quantified metabolites and lipoproteins matrix of dn²PD patients.



Supplementary Figure S5. Chronological age versus predicted age for the SVM, PLS, ElasticNet and the the Klemeera-Doubal (K1 and K2) models built on metabolites and lipoproteins of advPD patients.



Supplementary Figure S6. Chronological age versus predicted age for the SVM, PLS, ElasticNet and the the Klemeera-Doubal (K1 and K2) models built on binned spectra of advPD patients.