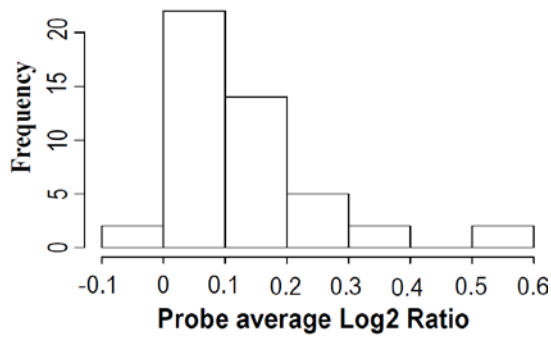
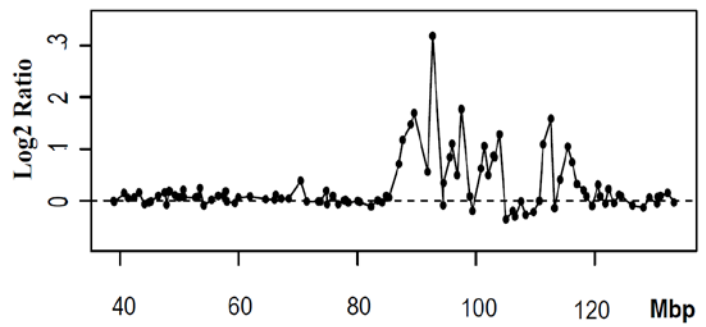


**(A) Control cohort from basal**



**(B) Patient 378 on 12q**



**Supplementary File 8.** (A) shows a histogram from the control cohort for Basal-like test on 8q. The bar at an average log-ratio of [0.5, 0.6] are the patients 110 and 302 which have a heavy weight when computing centers of mass; (B) shows an aCGH profile for patient 378 from luminal B cohort on 12q. The Y axis in this profile have a maximum of 3.5 when for every other patient in the data set was 1.7