

Supplementary Information

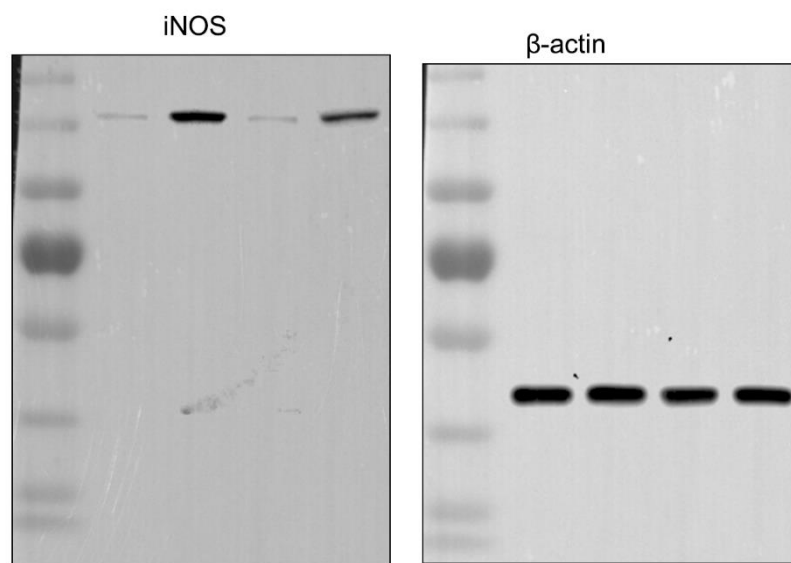
P2X7 Receptor Augments LPS-Induced Nitrosative Stress by Regulating Nrf2 and GSH Levels in the Mouse Hippocampus

Duk-Shin Lee¹ and Ji-Eun Kim^{1,*}

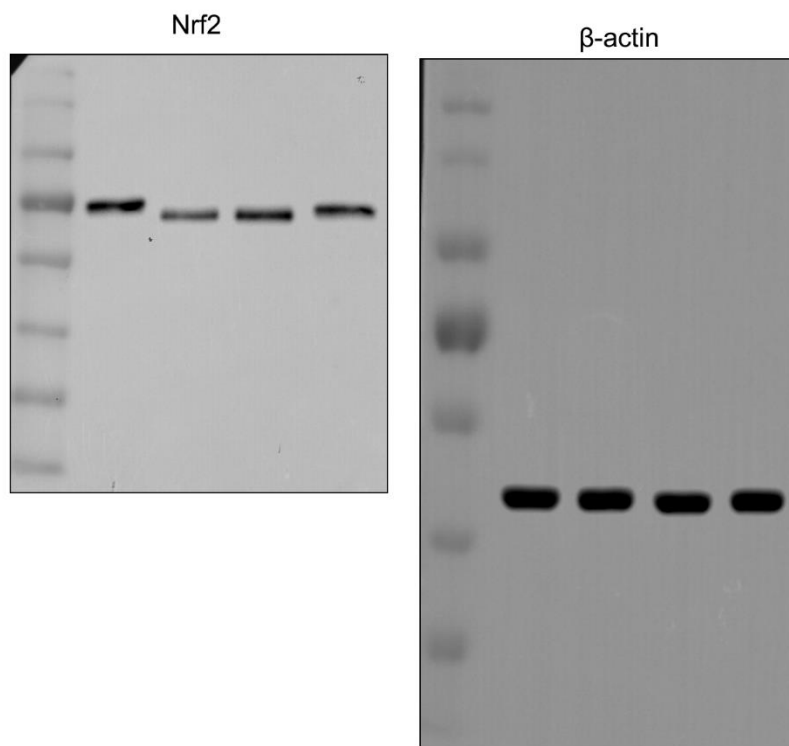
¹Department of Anatomy and Neurobiology, Institute of Epilepsy Research, College of Medicine, Hallym University, Chuncheon 24252, South Korea

Running title: Role of P2X7R in LPS-induced nitrosative stress

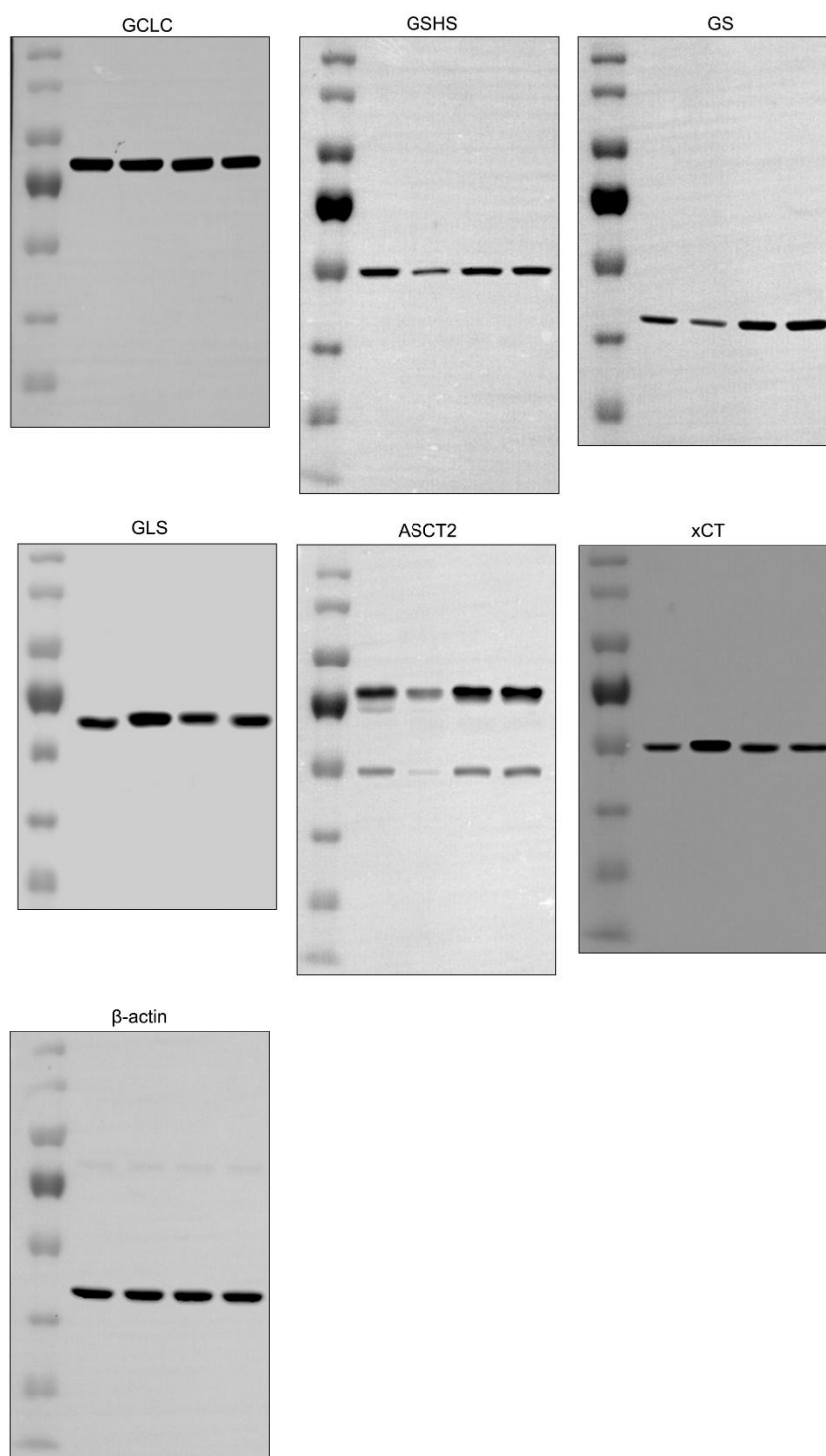
* Correspondence to: J.-E Kim, Department of Anatomy and Neurobiology, College of Medicine, Hallym University, Chuncheon, Kangwon-Do 24252, South Korea; Tel: +82-33-248-2522; Fax: +82-33-248-2525;
E-mail: jieunkim@hallym.ac.kr



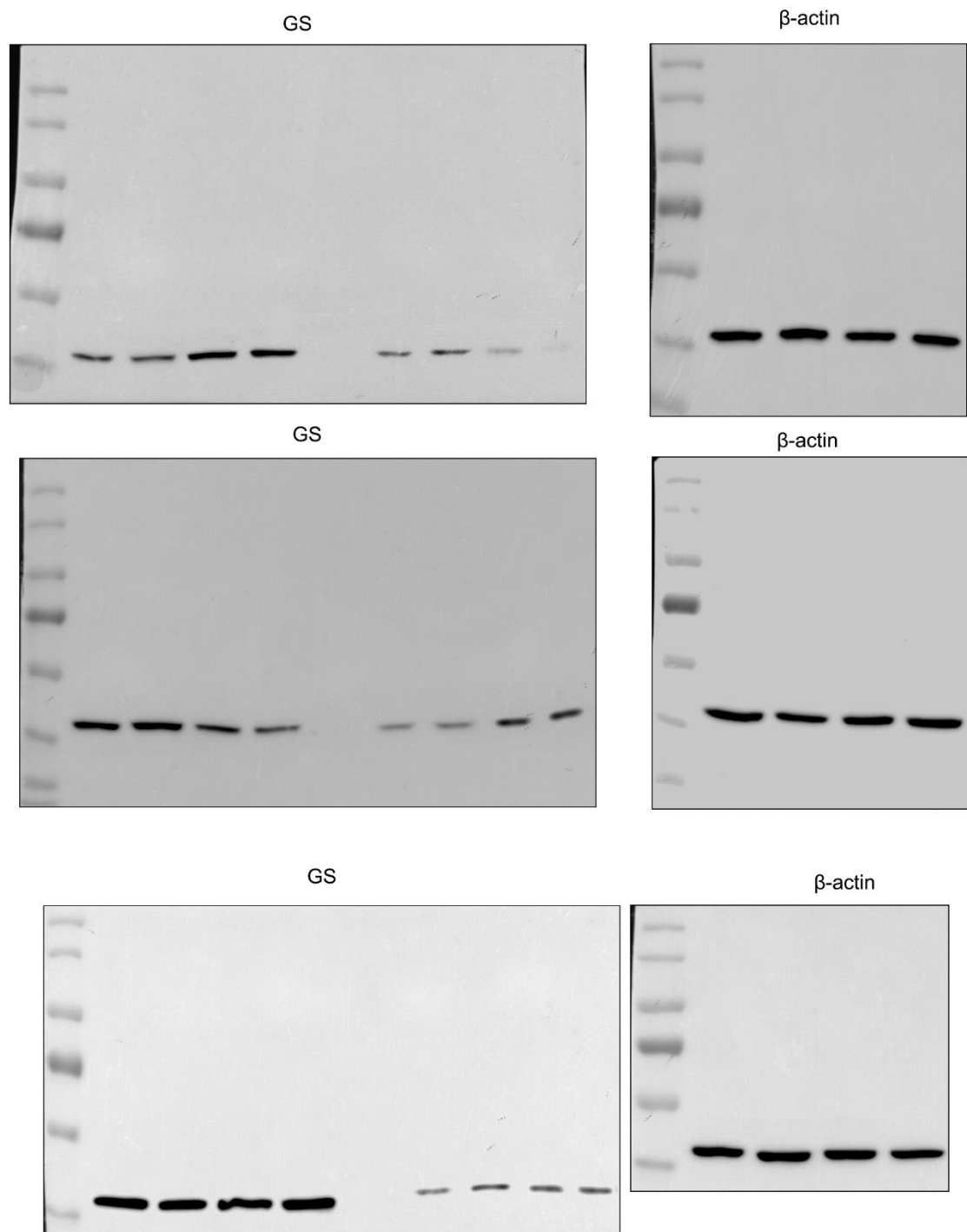
Supplementary Figure S1. Full-length gel images of Western blot data in Figure 2A.



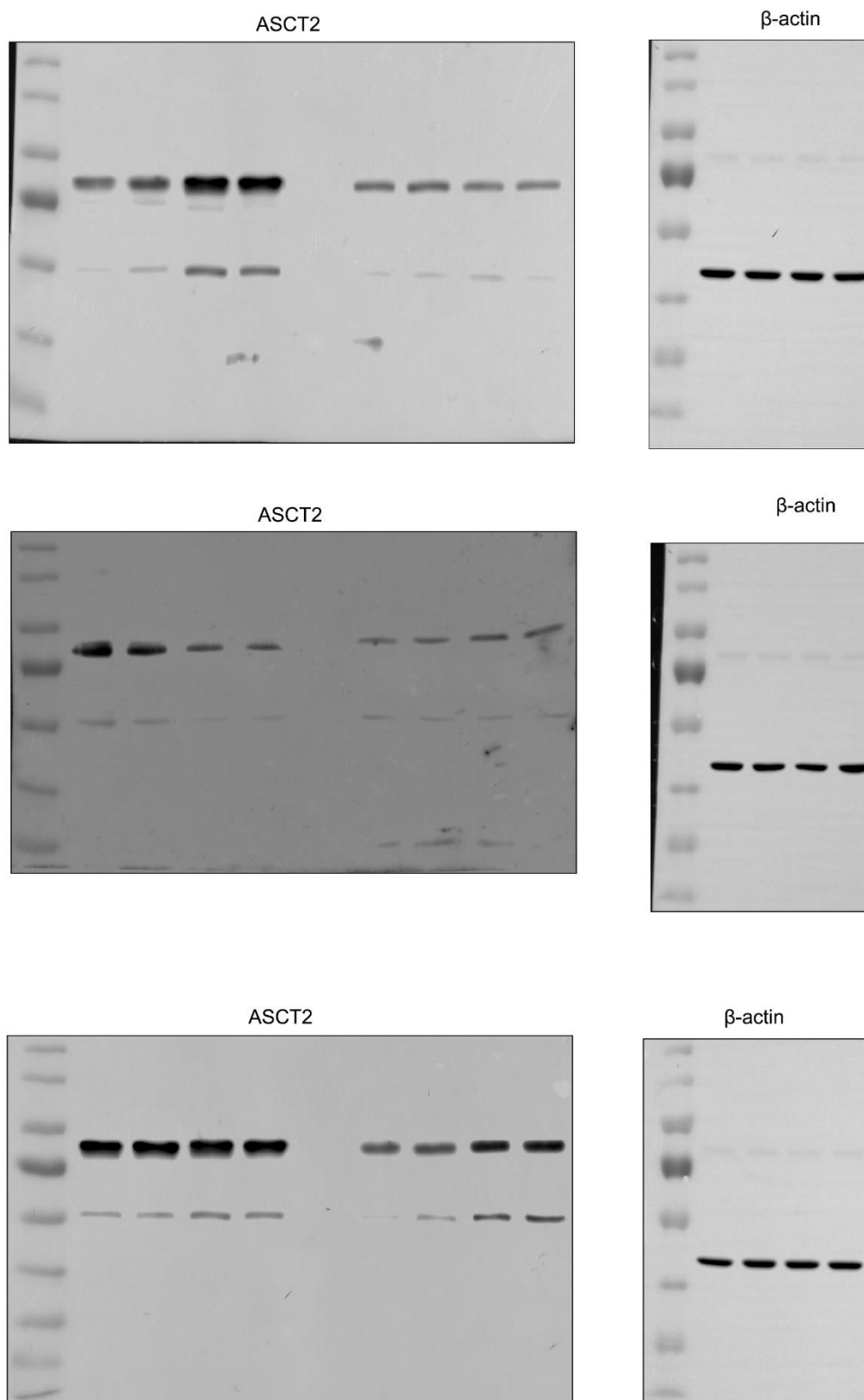
Supplementary Figure S2. Full-length gel images of Western blot data in Figure 4A.



Supplementary Figure S3. Full-length gel images of Western blot data in Figure 6B.



Supplementary Figure S4. Full-length gel images of Western blot data in Figure 7.



Supplementary Figure S5. Full-length gel images of Western blot data in Figure 8.