

Supplementary materials

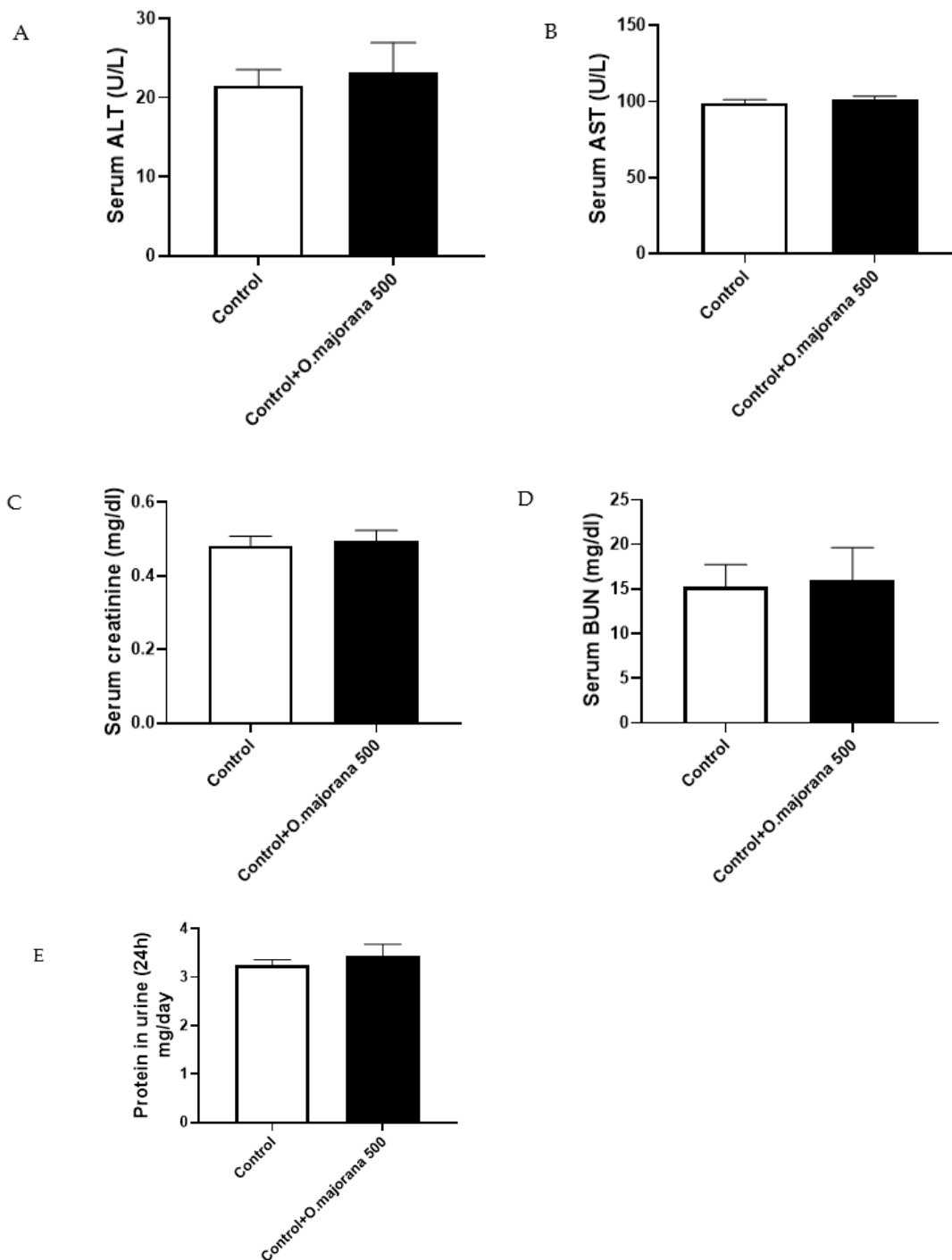


Figure S1. Effect of *O. majorana* (500 mg/kg/day) on (A) serum alanine aminotransferase (ALT), (B) serum aspartate aminotransferase (AST), (C) serum creatinine, (D) blood urea nitrogen (BUN), (E) protein in urine when administrated to normal control group.

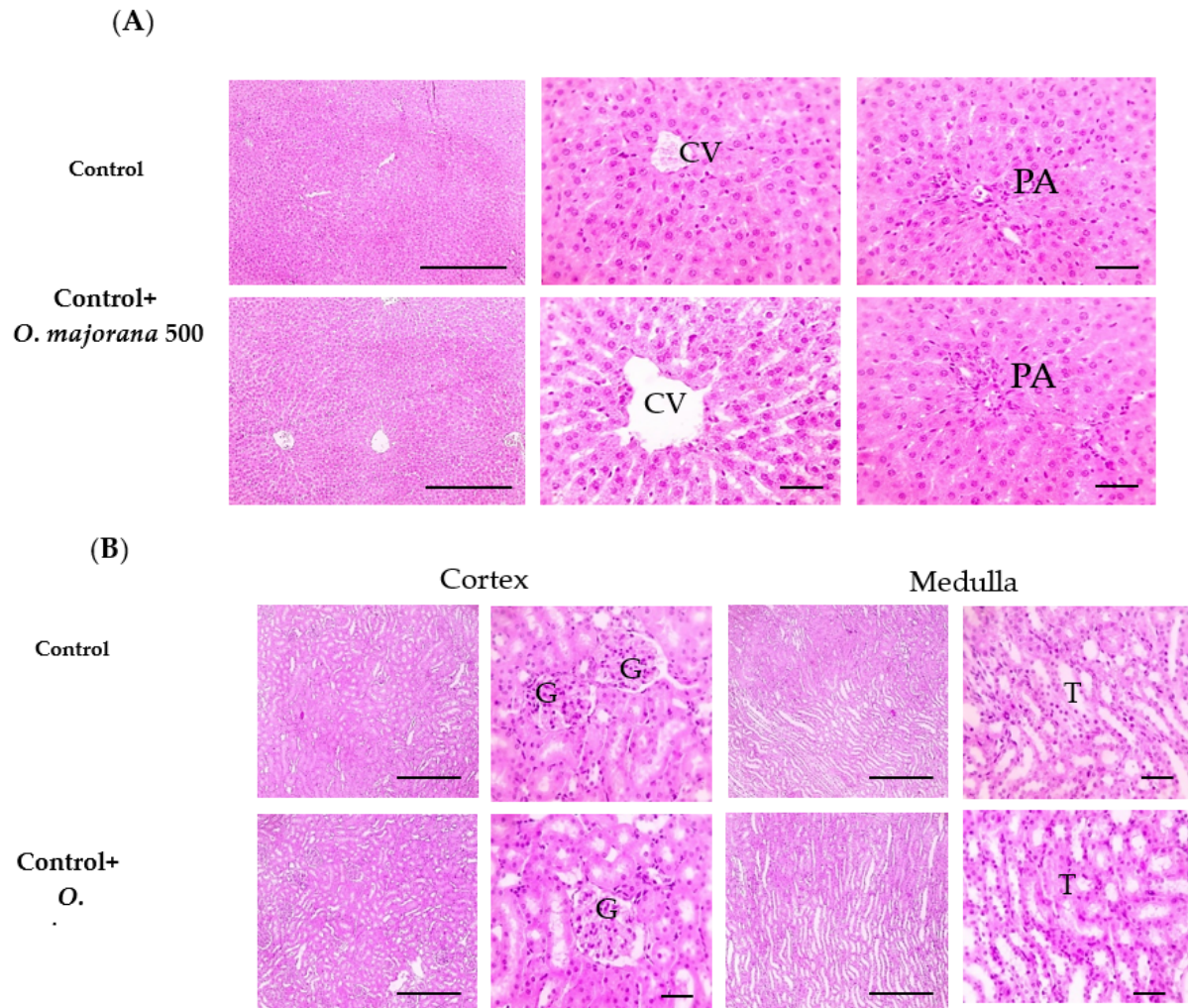


Figure S2. (A) Microscopic pictures of H&E-stained hepatic sections showing normal hepatocytes, central vein (CV) and portal areas (PA) in control group, and control treated with *O. majorana* 500mg/kg/day . Low magnification X: 100 bar 100 and high magnification X: 400 bar 50. (B) Microscopic pictures of H&E-stained renal sections showing normal cortex including glomeruli (G) and tubules (T) and medulla in control group and control treated with *O. majorana* 500mg/kg/day. Low magnification X: 100 bar 100 and high magnification X: 400 bar 50.