

Supplementary Materials

Figure S1 includes the results of the analysis of different LTA from BPL1TM doses in the pathogen infection assay of *C. elegans* (*S. aureus*) (A) and the positive dose response effect of LTA from BPL1TM in the *C. elegans*' Alzheimer's Disease model (B).

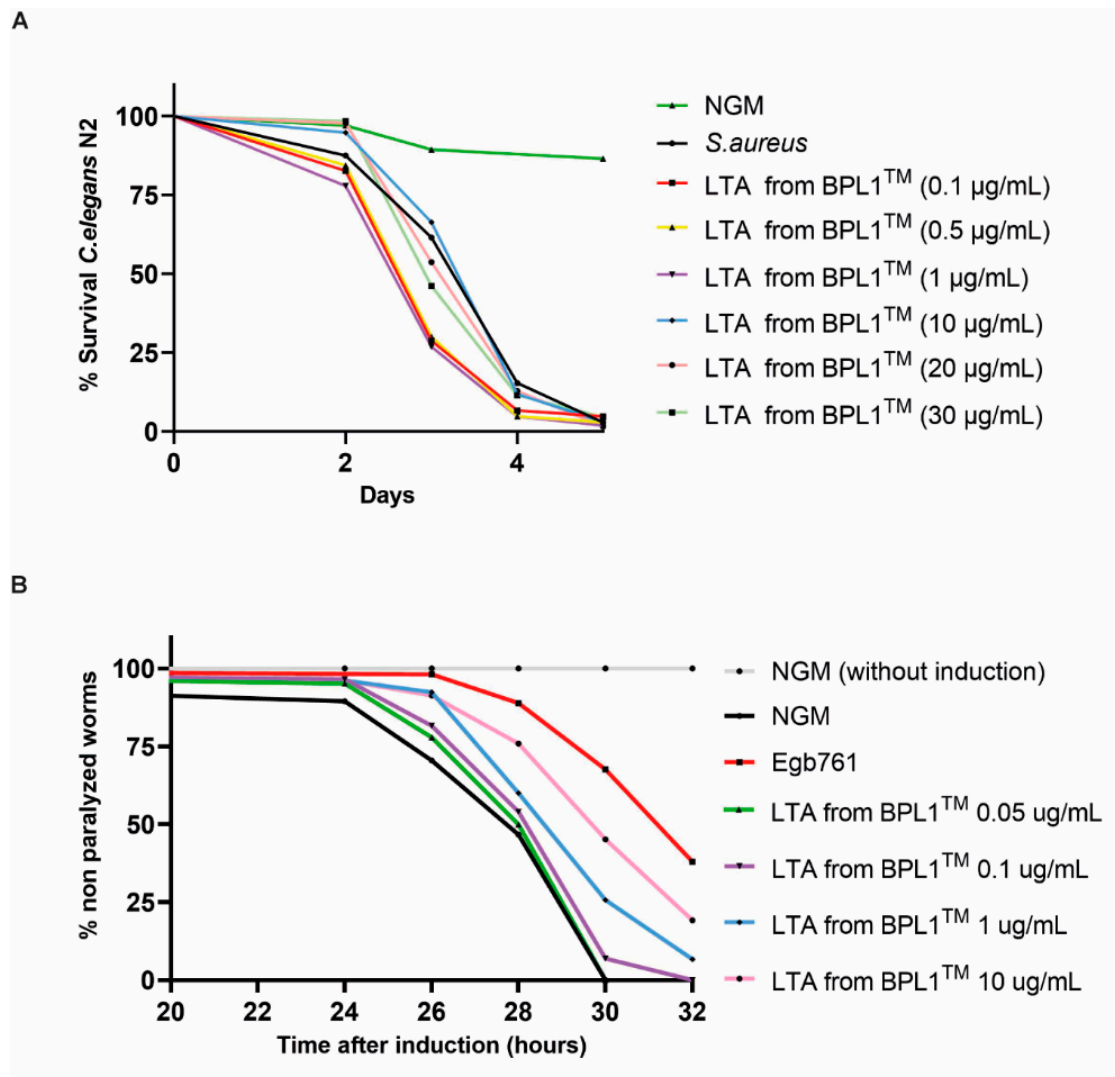


Figure S1. (A) Dose-Response of survival rate of N2 wild type nematodes fed with *E. coli* OP50 strain, *S. aureus* ATCC 25923 strain and different doses of LTA from BPL1TM. No statistical differences observed. Data are the average of two independent experiments (n = 100/condition). Log Rank T-test was applied. **(B)** Percentage of CL4176 non-paralyzed worms fed different doses of LTA from BPL1TM. Optimal dose 10 µg/mL ($p < 0.0001$). Data correspond to two independent assays (n = 100/condition). Log Rank *t*-test was applied.