

Figure S1

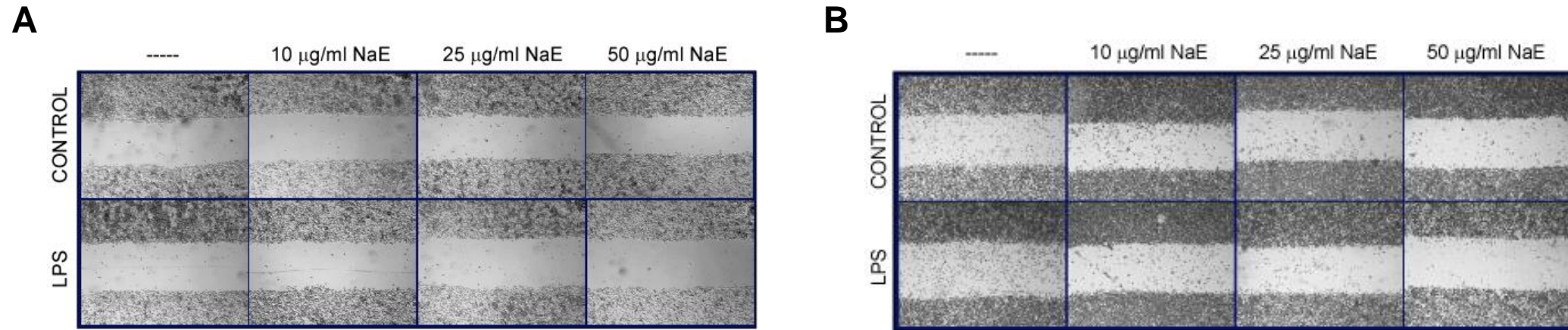
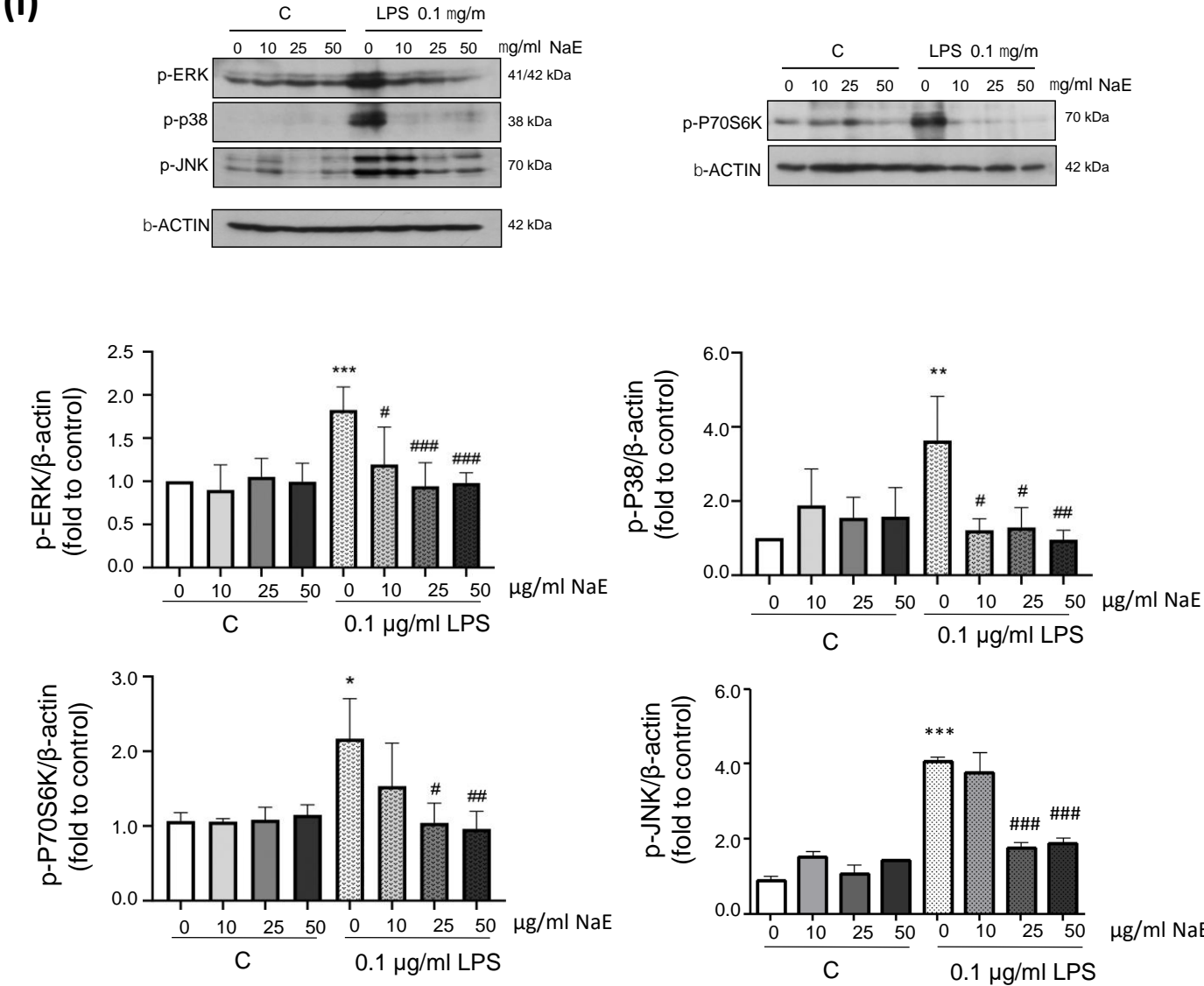


Figure S1. Effect of NaE extract on BV2 microglia functions. BV2 cells were pretreated for 60 min at 37 °C with the indicated doses of NaE, and then stimulated or not with 0.1 $\mu\text{g/ml}$ of LPS. Representative images showing: (A) Scratch at time 0; (B) Cell migration at 3 h. Magnification, 40 \times .

Figure S2

(i)



(ii)

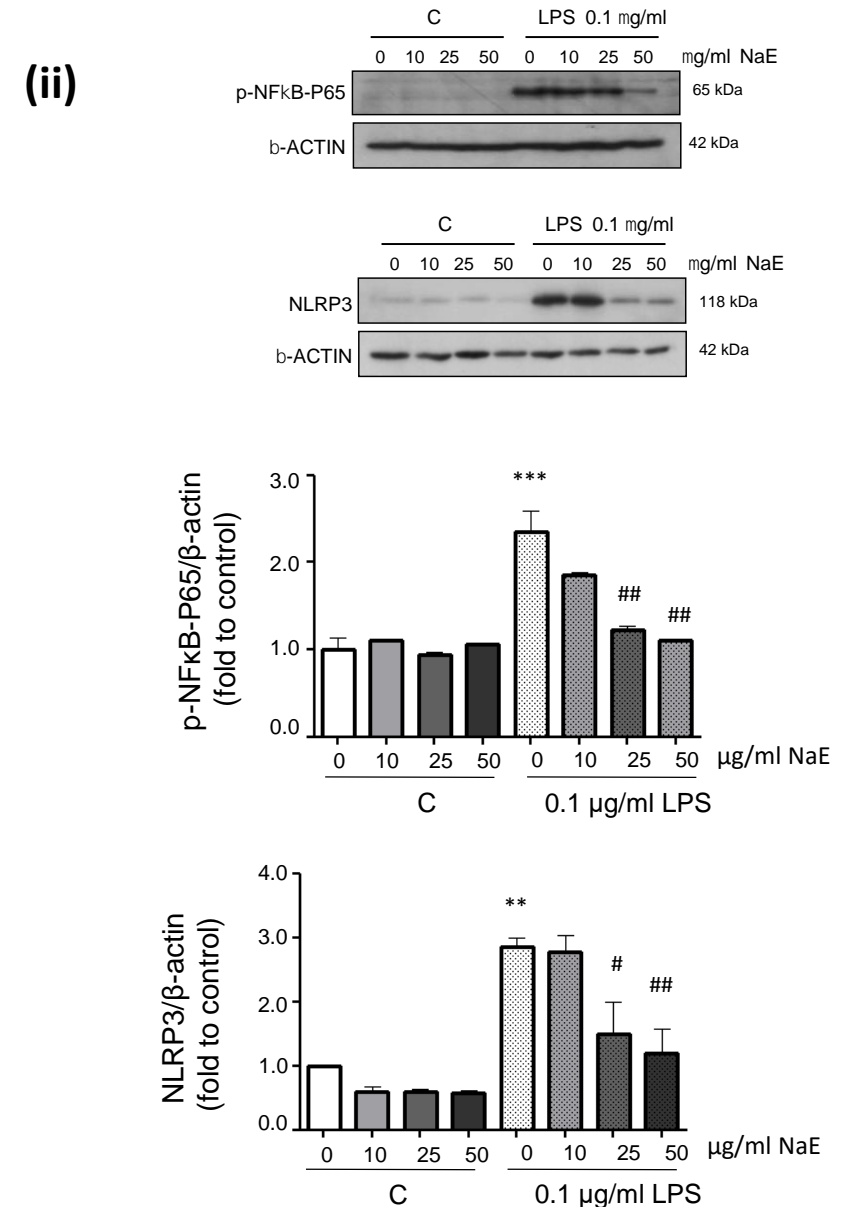


Figure S2. NaE treatment modulates BV2 microglial cells activation: Quantification. BV2 cells were pretreated for 60 min with the indicated doses of NaE. After 30 min (i) or 24 h (ii) of stimulation with 0.1 μg/ml of LPS, p-ERK, p-P38, p-JNK, p-NFκB-P65 and NLRP3 expression was identified in cell lysates by Western blot. Quantification graphs of the Western blots are shown with fold over the control in each condition (***p<0.001, **p<0.01, *p<0.05 vs control; ###p<0.001, ##p<0.01 and #p<0.05 vs LPS)

Figure S3

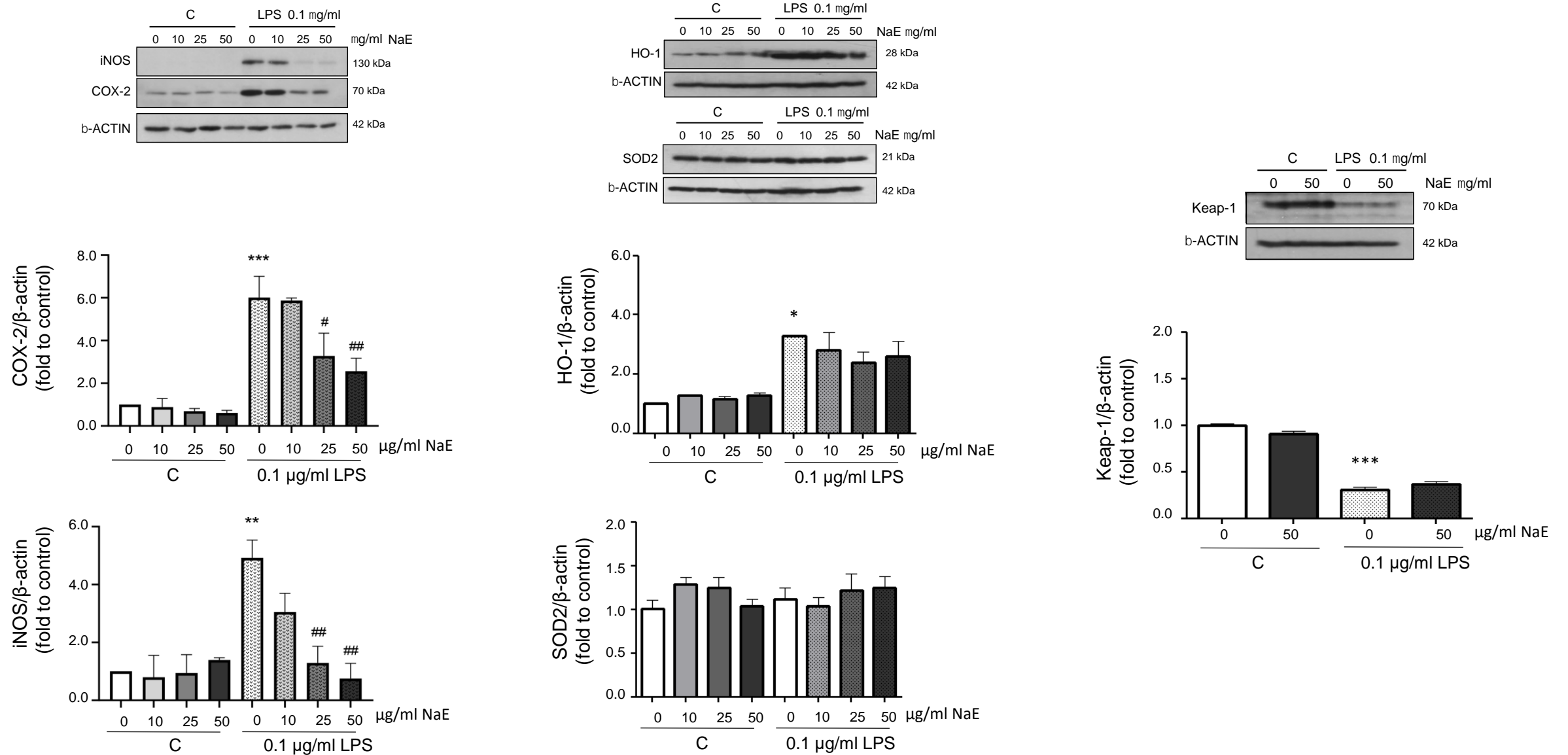


Figure S3. NaE treatment modulates BV2 microglial cells activation: Quantification. BV2 cells were pretreated for 60 min with the indicated doses of NaE. After 24 h of stimulation with 0.1 μ g/ml of LPS, COX-2, iNOS, HO-1, SOD2 and Keap-1 expression was identified in cell lysates by Western blot. Quantification graphs of the Western blots are shown with fold over the control in each condition (***p<0.001, **p<0.01, *p<0.05 vs control; ##p<0.01 and #p<0.05 vs LPS)

Figure S4

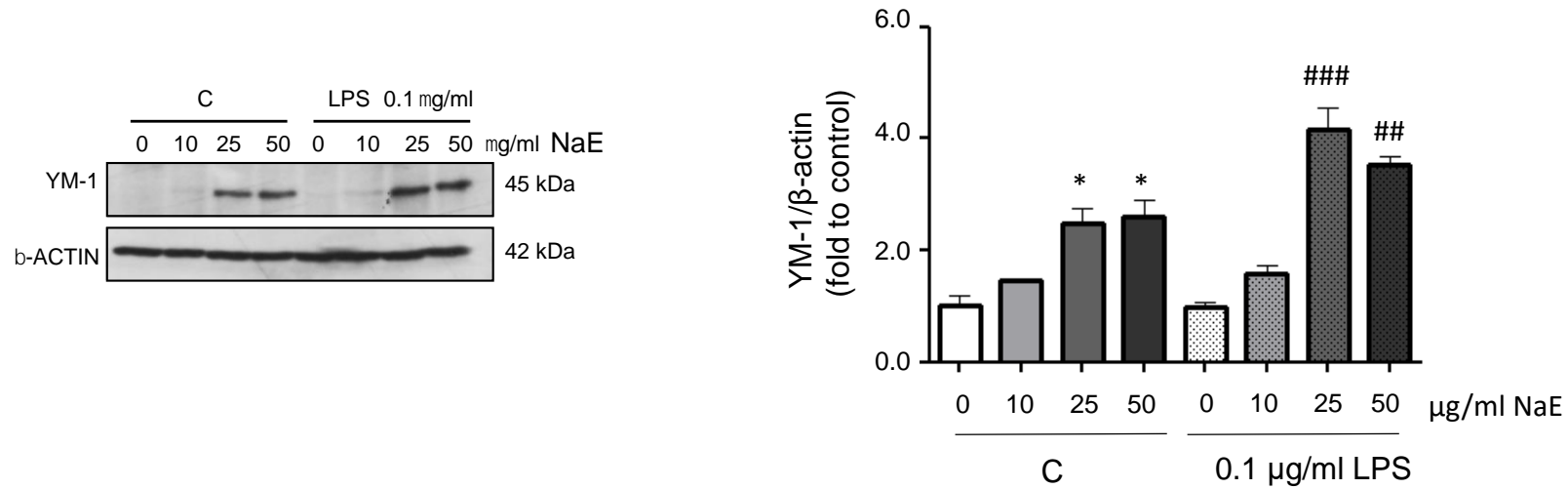


Figure S4. NaE treatment modulates BV2 microglial cells activation: Quantification. BV2 cells were pretreated for 60 min with the indicated doses of NaE. After 24 h of stimulation with 0.1 μg/ml of LPS, YM-1 expression was identified in cell lysates by Western blot. Quantification graphs of the Western blots are shown with fold over the control in each condition (*p<0.05 vs control; ###p<0.001 and ##p<0.01 vs LPS)

Table S1

Table S1. The concentration of the selected cytokines in the culture supernatants of BV2 cells pretreated for 60 min at 37 °C with the indicated doses of NaE, and then stimulated with 0.1 µg/ml of LPS. Data presented as means ± SD (n = 3–5)

	CONTROL			LPS		
	0	NaE 25	NaE 50	0	NaE 25	NaE 50
TNFα (ng/ml)	0,325±0,110	0,346±0,170	0,342±0,110	75,713±1,960	17,562±6,870	7,070±1,830
IL-6 (ng/ml)	0,012±0,005	0,010±0,005	0,017±0,006	12,988±2,700	6,017±2,230	1,971±1,350
IL-1β (pg/ml)	10,060±3,027	12,690±1,707	15,978±2,784	75,880±3,719	10,811±1,349	14,212±1,609
IL-10 (pg/ml)	393,300±34,690	263,300±22,610	398,900±56,220	8,000±2,000	230,000±17,000	283,300±69,440