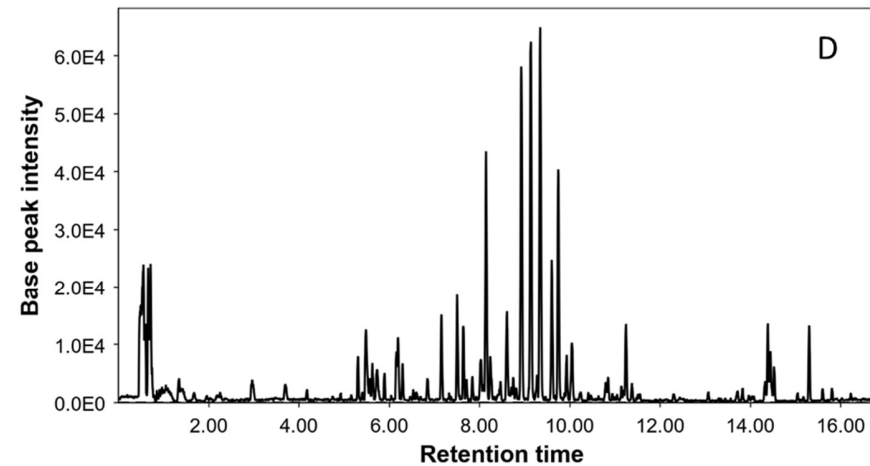
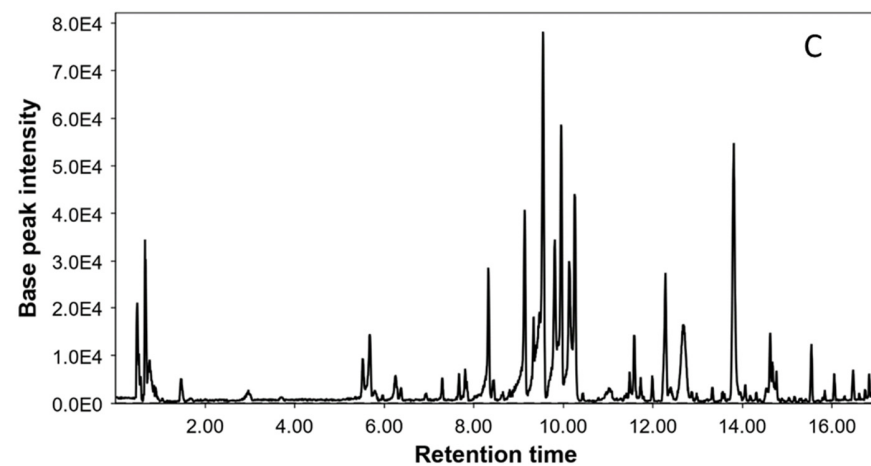
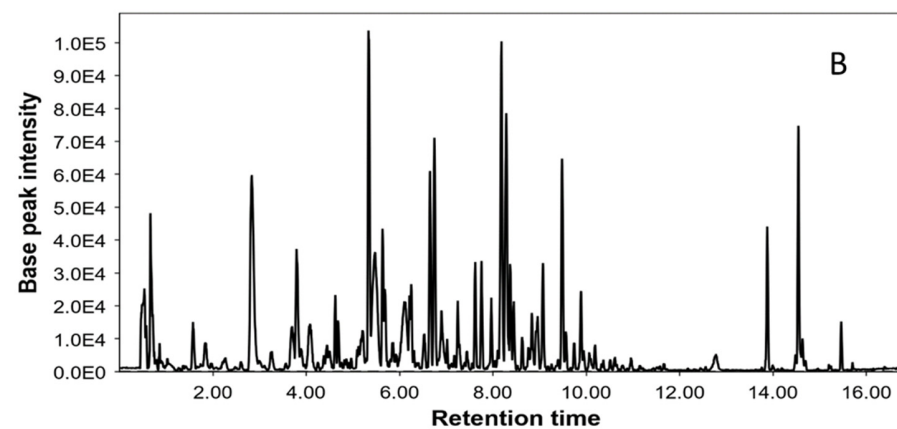
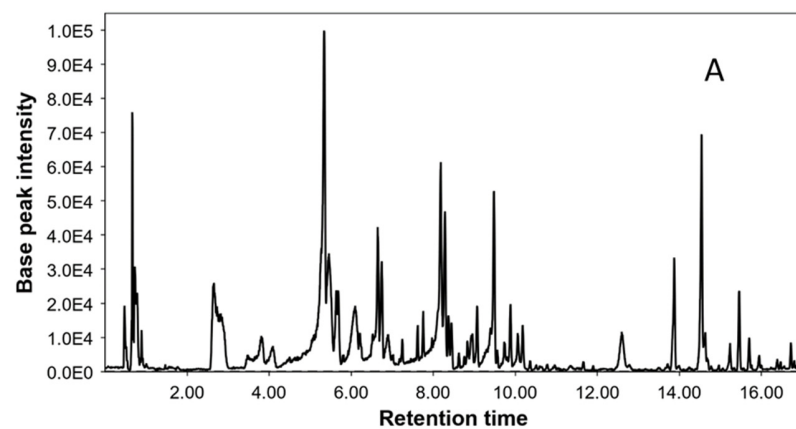


Table S1. Total phenolic and flavonoid content of the tested extracts

Parts	Solvents	TPC (mg GAE/g)	TFC (mg RE/g)
Stems	n-hexane	22.36±0.26 ^e	0.83±0.07 ^e
	Ethyl acetate	55.19±1.29 ^c	7.84±0.26 ^c
	Dichloromethane	30.50±0.82 ^d	8.56±0.15 ^b
	Methanol	121.78±1.41 ^a	11.25±0.26 ^a
	Water	105.14±0.99 ^b	5.32±0.08 ^d
Fruits	n-hexane	16.86±0.25 ^c	0.14±0.03 ^e
	Ethyl acetate	17.36±0.32 ^c	0.51±0.03 ^c
	Dichloromethane	16.58±0.75 ^c	0.34±0.02 ^d
	Methanol	75.91±0.58 ^a	17.55±0.09 ^a
	Water	68.97±0.36 ^b	8.84±0.39 ^b
Leaves	n-hexane	23.21±0.28 ^{cd}	8.43±0.03 ^e
	Ethyl acetate	25.72±0.10 ^c	11.68±0.47 ^d
	Dichloromethane	21.77±0.04 ^d	21.56±0.14 ^c
	Methanol	94.64±2.12 ^a	75.36±0.92 ^a
	Water	62.55±0.28 ^b	42.18±0.26 ^b

Values are reported as mean ±SD of three parallel measurements. TPC: Total Phenolic Content; TFC: Total Flavonoid Content; GAE: Gallic acid equivalent; RE: Rutin equivalent. Different letters indicate significant differences in the extracts from same parts (p<0.05).



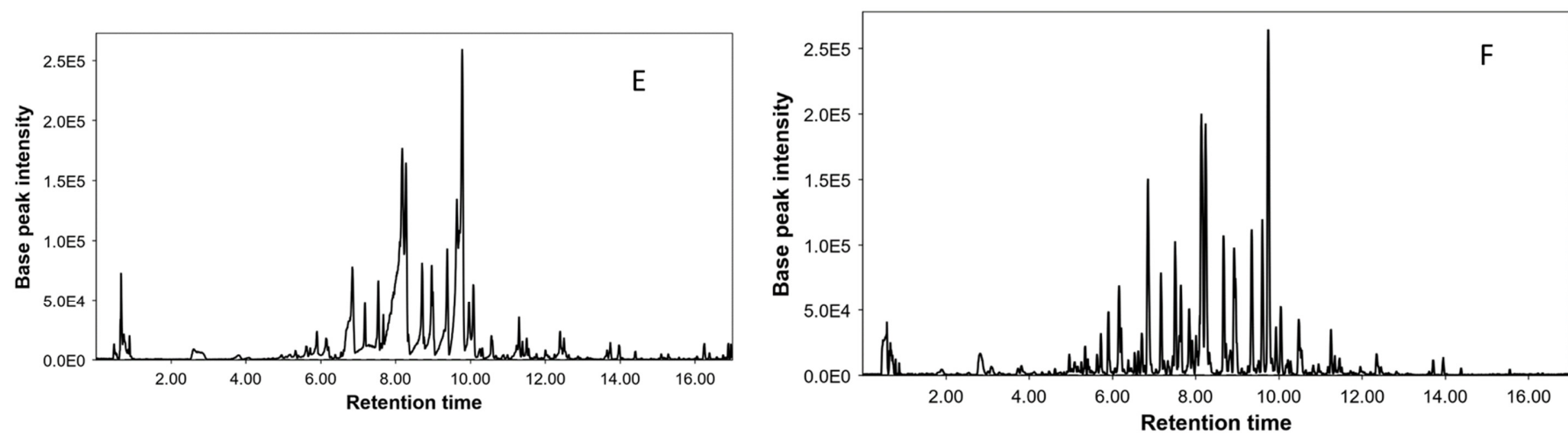


Figure S1. Base peak chromatogram of (A) methanol, (B) water steam extracts, (C) methanol, (D) water fruit extracts, (E) methanol and (F) water leaf extracts from *Paliurus*.