

Figure S1. Identification of MSCs. **(A)** The P0-P3 MSCs showed a long spindle shape (bar=100 μ m). **(B)** MSCs surface antigen identification by flow cytometry. MSCs: mesenchymal stem cells; Negative antigen: CD11b/c and CD45; positive antigen: CD29 and CD54.

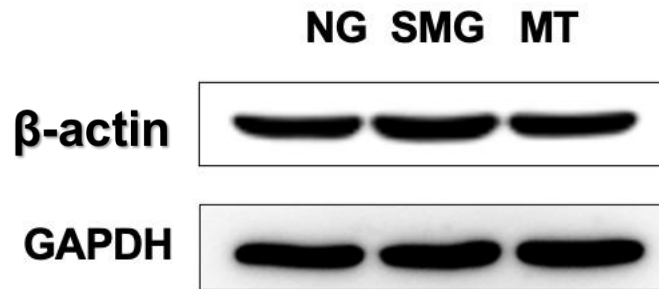
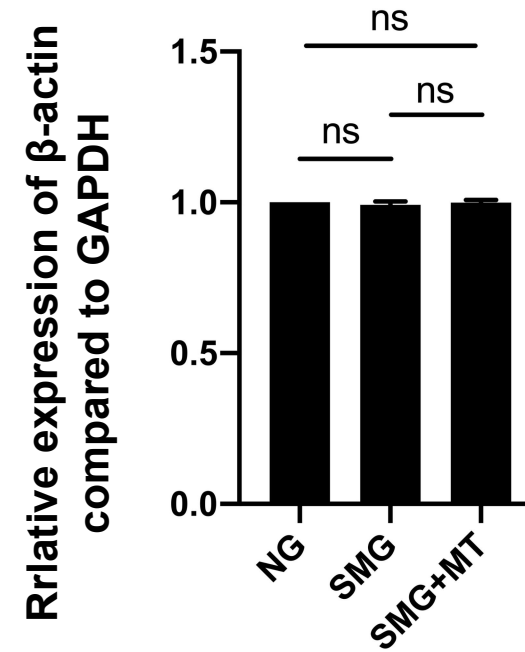
A**B**

Figure S2. The representative image (**A**) and the quantitative analysis of the protein level expression of β -actin by normalizing to GAPDH(**B**). MSCs: mesenchymal stem cells; NG normal gravity; SMG simulated microgravity; MT: Mito-TEMPO; $n=3$, ns $p>0.05$.