

Whey improves in vitro endothelial mitochondrial function and metabolic redox status in diabetic state

Elisa Martino^{1,†}, Amalia Luce^{1,†}, Anna Balestrieri², Luigi Mele³, Camilla Anastasio¹, Nunzia D’Onofrio¹, Maria Luisa Balestrieri^{1,*}, Giuseppe Campanile⁴

¹ Department of Precision Medicine, University of Campania Luigi Vanvitelli, Via L. De Crecchio 7, 80138 Naples, Italy; elisa.martino@unicampania.it (E.M.), amalia.luce@unicampania.it (A.L.), camilla.anastasio@unicampania.it (C.A.), nunzia.donofrio@unicampania.it (N.D.).

² Food Safety Department, Istituto Zooprofilattico Sperimentale del Mezzogiorno, Portici, Italy; anna.balestrieri@izsmportici.it (A.B.).

³ Department of Experimental Medicine, University of Campania Luigi Vanvitelli, Via Luciano Armanni 5, 80138 Naples, Italy; luigi.mele@unicampania.it (L.M.).

⁴ Department of Veterinary Medicine and Animal Production, University of Naples Federico II, Naples, Italy; giuseppe.campanile@unina.it (G.C.).

* Correspondence: marialuisa.balestrieri@unicampania.it; Tel.: +39-081-566-5865

† These authors contributed equally to this work.

SUPPLEMENTARY MATERIALS

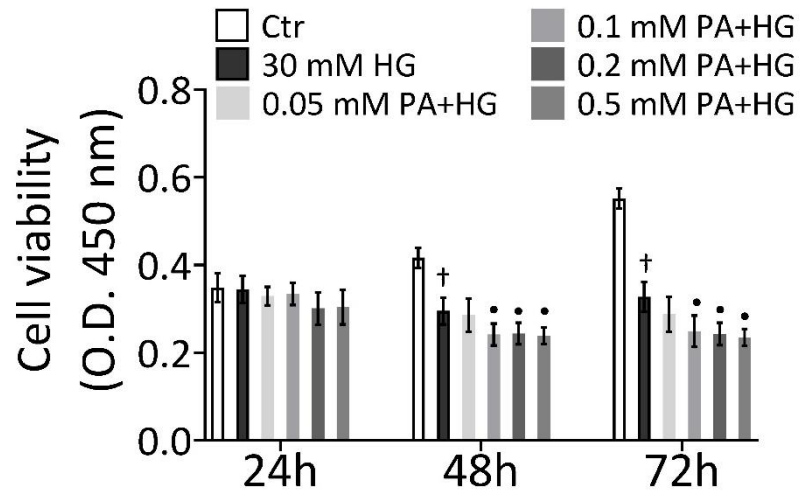


Figure S1. Dose- and time-response of PA on HG-cells. EC viability following exposure for 24, 48 and 72h to different doses of PA in EC stimulated with HG (30mM). Data are reported as mean \pm SD of $n = 3$ independent experiments. † $p < 0.01$ vs. Ctr; • $p < 0.05$ vs. HG.

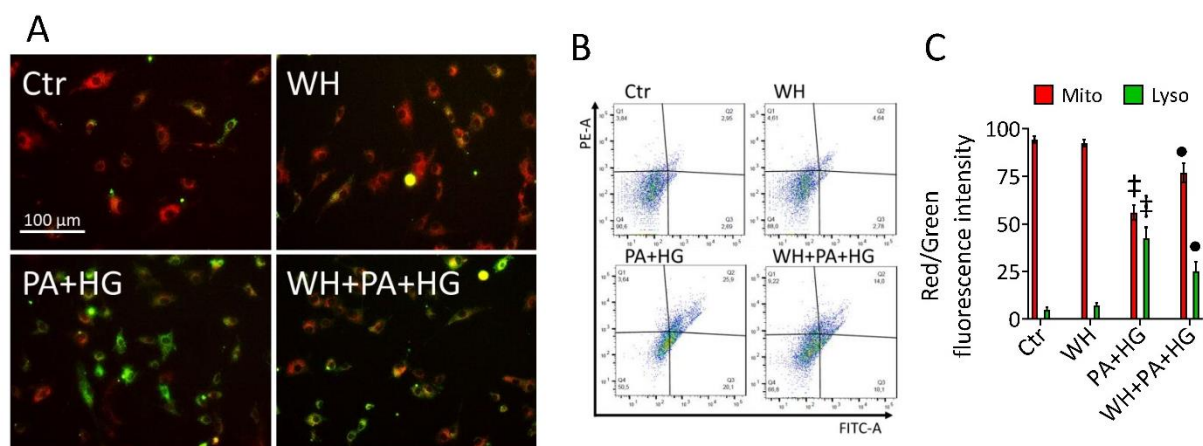


Figure S2. Whey effects on PA+HG-induced mitophagy. (A) Representative fluorescent images and (B,C) FACS analysis of intact mitochondria (red) and lysosome (green) stains. Scale bars = 100 μ m. Data are reported as mean \pm SD of n = 3 independent experiments. \ddagger p<0.001 vs. Ctrl; \bullet p<0.05 vs. PA+HG.

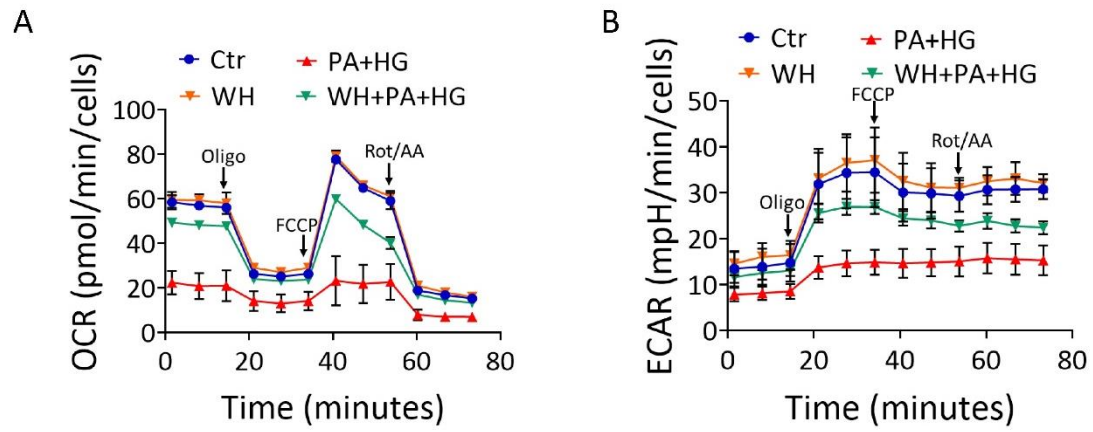


Figure S3. *Whey effects on mitochondrial respiration.* (A) Oxygen consumption rate (OCR) and (B) extracellular acetylation rate (ECAR) assessed with Seahorse analyzer in EC treated cells.

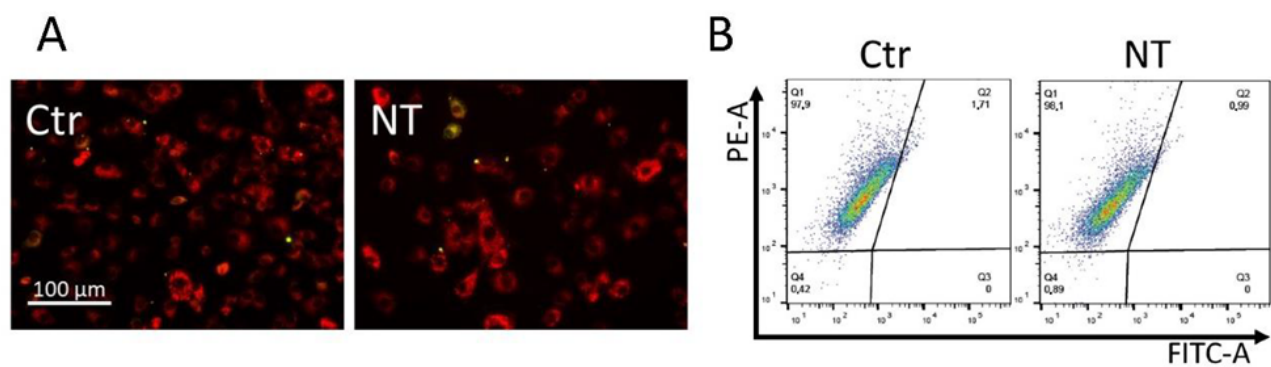


Figure S4. *Mitochondrial membrane polarization controls.* (A) Representative fluorescent images and (B) FACS analysis of mitochondrial membrane potential of EC transfected with non-targeting siRNA control (NT) or not transfected (Ctr). Scale bars = 100 μm .

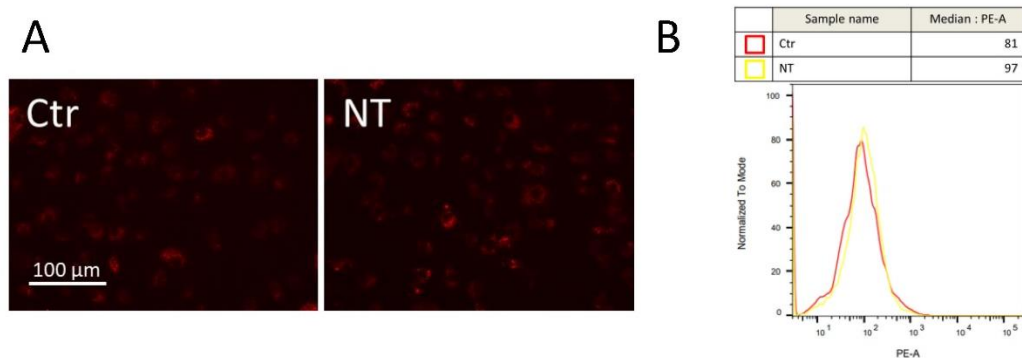


Figure S5. *Mitochondrial ROS controls.* (A) Representative fluorescent images and (B) FACS analysis of mitochondrial ROS levels assessed in EC transfected with non-targeting siRNA control (NT) or not transfected (Ctr). Scale bars = 100 μ m.