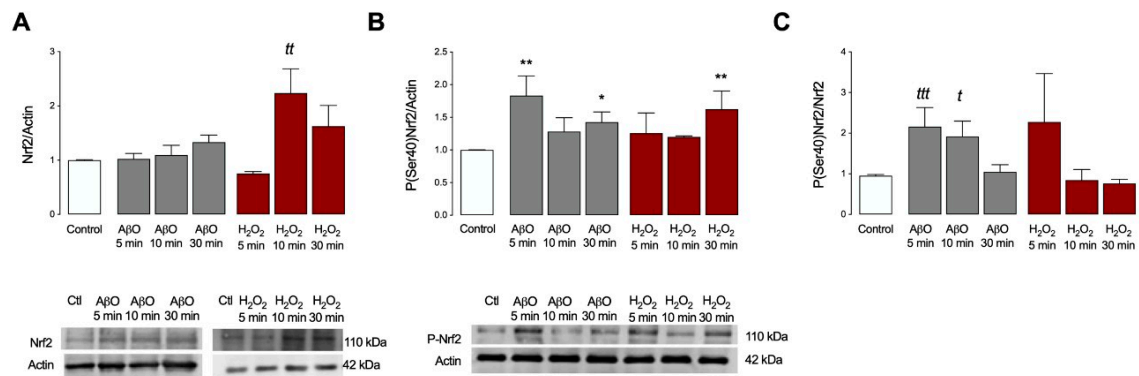
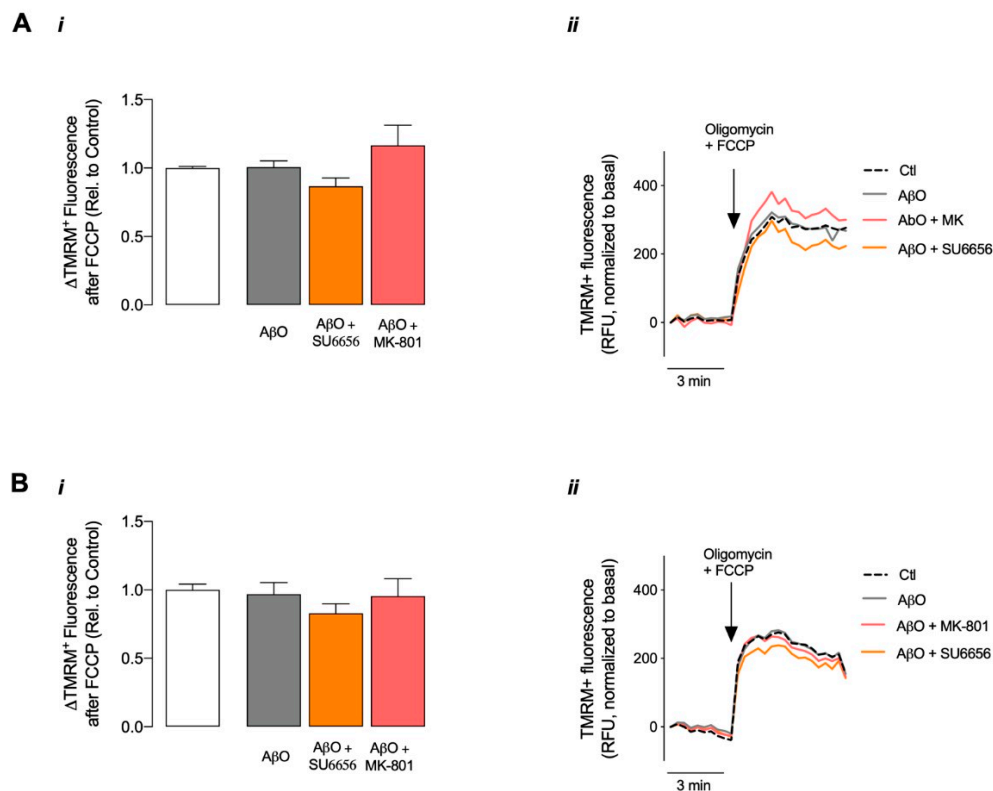


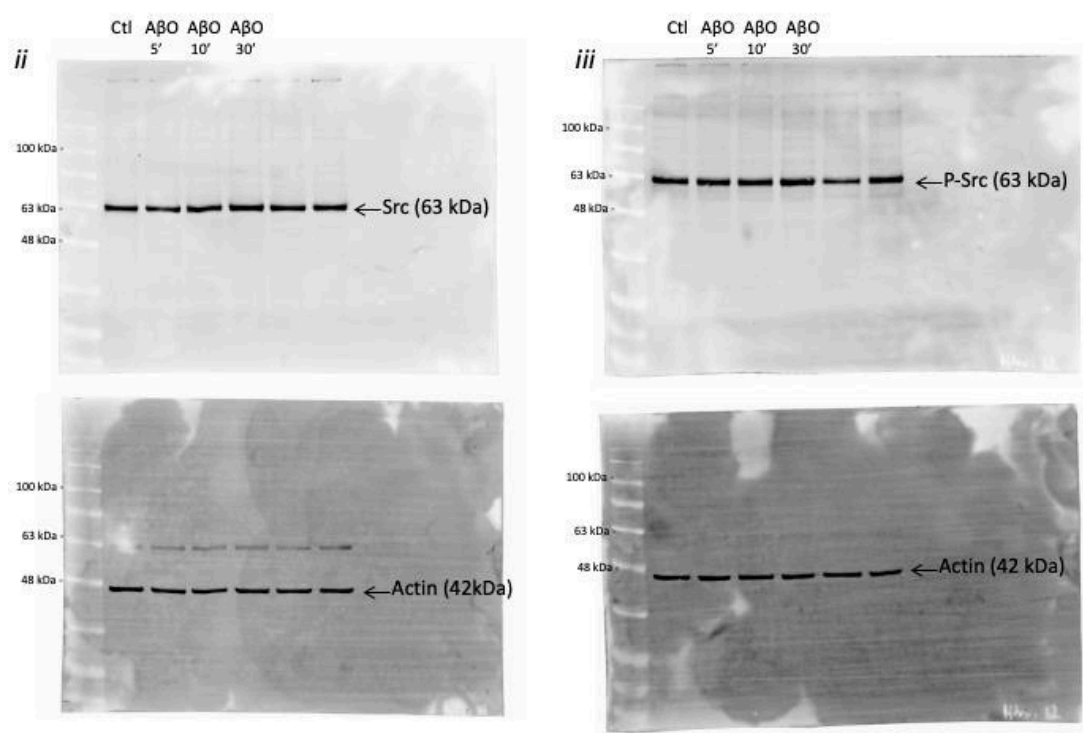
## Supplementary Data



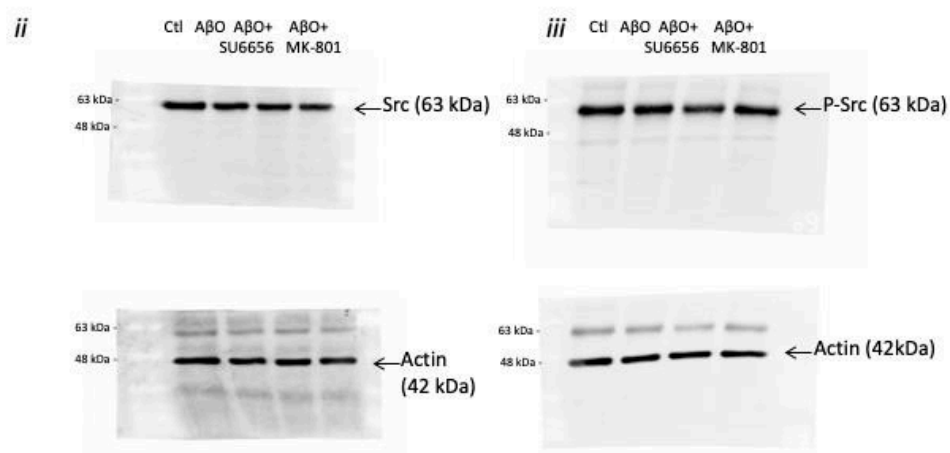
**Figure S1.** Nrf2 total and phosphorylated protein levels in mature hippocampal neurons after AβO exposure. Hippocampal mature neurons were incubated with 1 μM AβO for 5, 10 and 30 min and the levels of Nrf2/actin (A), P(Ser40)Nrf2/actin (B) and P(Ser40)Nrf2/Nrf2 (C) in total cell extract were evaluated using Western blotting. Data are expressed in arbitrary units relative to actin as the mean ± SEM of n=3 to 11 experiments. Statistical analysis: \*p < 0.05 or \*\*p < 0.01 vs. Control (Kruskal-Wallis followed by Dunn's post hoc test); 'p < 0.05, ''p < 0.01 and '''p < 0.001 vs. Control (Mann-Whitney).



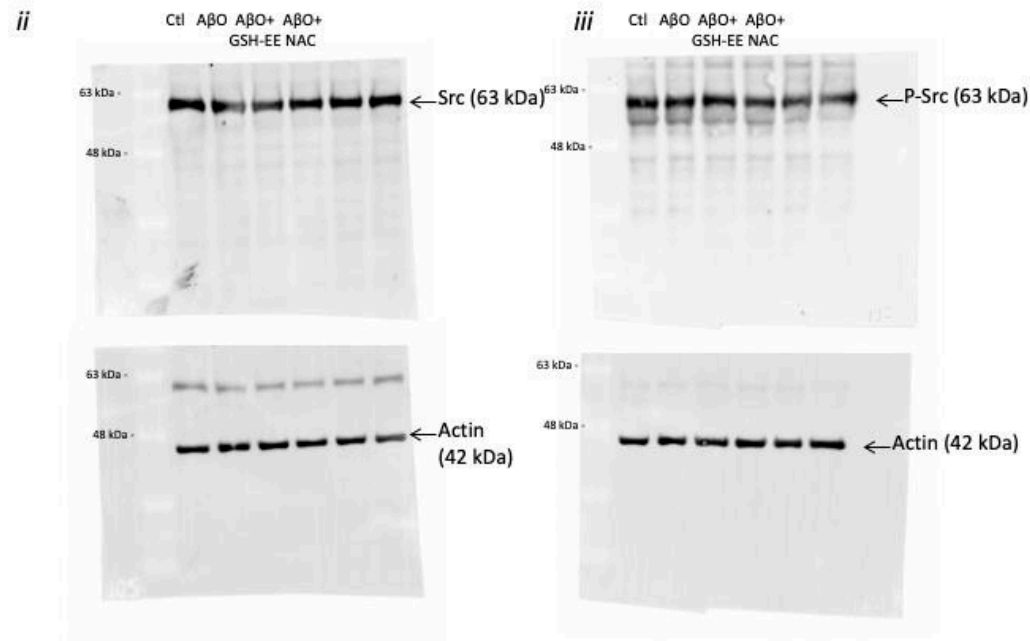
**Figure S2.** Mitochondrial membrane potential following AβO exposure in mature hippocampal neurons. AβO-induced changes in mitochondrial membrane potential were determined using TMRM<sup>+</sup> under quenched conditions. Cells were incubated with AβO (1 μM) for 10 min (A) or 30 min (B). The effect of SU6656 (5 μM) and MK-801 (10 μM) were evaluated (A-B). Mitochondrial membrane potential was assessed after complete mitochondrial depolarisation using oligomycin plus FCCP (2 μg/ml and 2 μM, respectively). In graphics (i), results were plotted as the difference between the maximal value achieved and the basal value before AβO addition, relative to control. Graphics (ii) are the representative line charts. Data are expressed as the mean ± SEM of n=3 to 9 experiments, run in triplicate.



**Figure S3:** Entire Western blot membranes, which correspond to the cropped Western blot band shown in Figure 1Aii and 1Aiii.

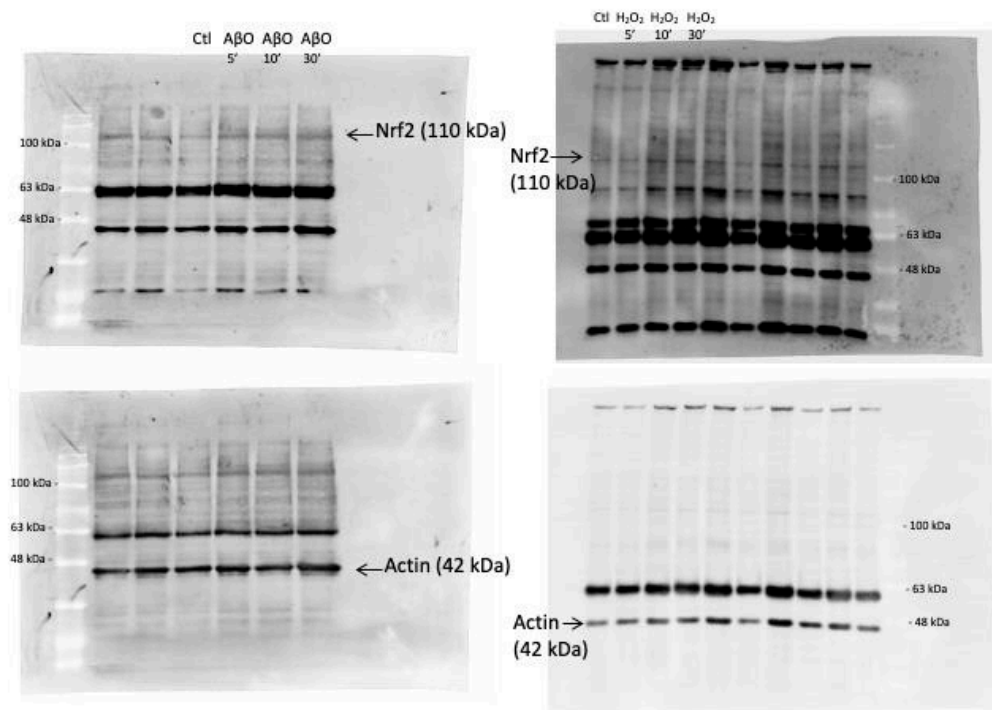


**Figure S4:** Entire Western blot membranes, which correspond to the cropped Western blot band shown in Figure 1Bii and 1Biii. Note that the membranes have been cut before incubation with the antibodies.

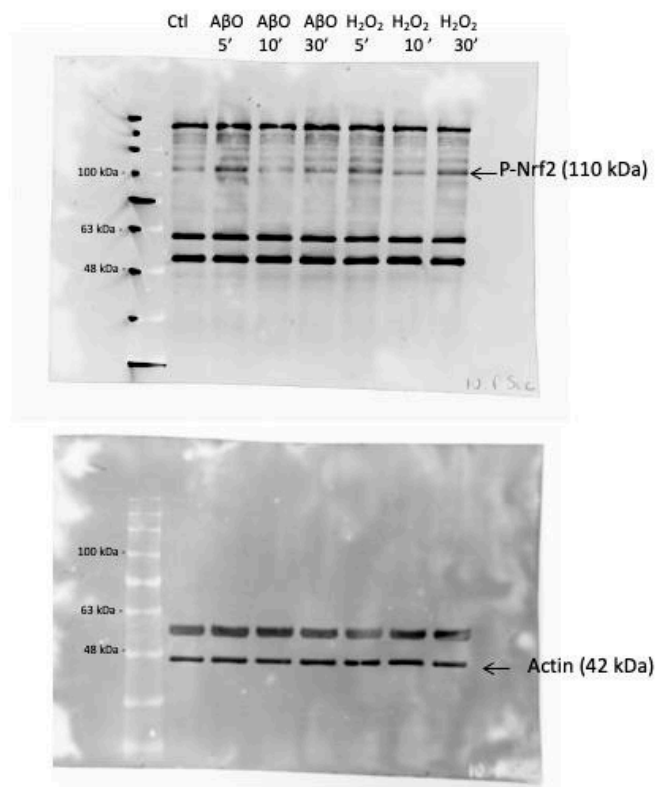


NB: Membrane have been cut before incubation with antibodies

**Figure S5:** Entire Western blot membranes, which correspond to the cropped Western blot band shown in Figure 1Cii and 1Ciii. Note that the membranes have been cut before incubation with the antibodies.



**Figure S6:** Entire Western blot membranes, which correspond to the cropped Western blot band shown in Figure S1A.



**Figure S7:** Entire Western blot membranes, which correspond to the cropped Western blot band shown in Figure S1B.