

Indian almond (*Terminalia catappa* Linn.) leaves extract healthspan by improving lipid metabolism and antioxidant activity dependent on AMPK signaling pathway in *Caenorhabditis elegans* under high-glucose diet conditions

Yebin Kim¹, Seul-bi Lee¹, Myogyeeong Cho¹, Soojin Choe² and Miran Jang^{1, 2*}

1 Department of smart food and drug, Inje University, Gimhae 50834, Republic of Korea

2 Department of Food Technology and Nutrition, Inje University, Gimhae 50834, Republic of Korea

* Correspondence: mrjangl@inje.ac.kr; Tel.: +82-55-320-3234

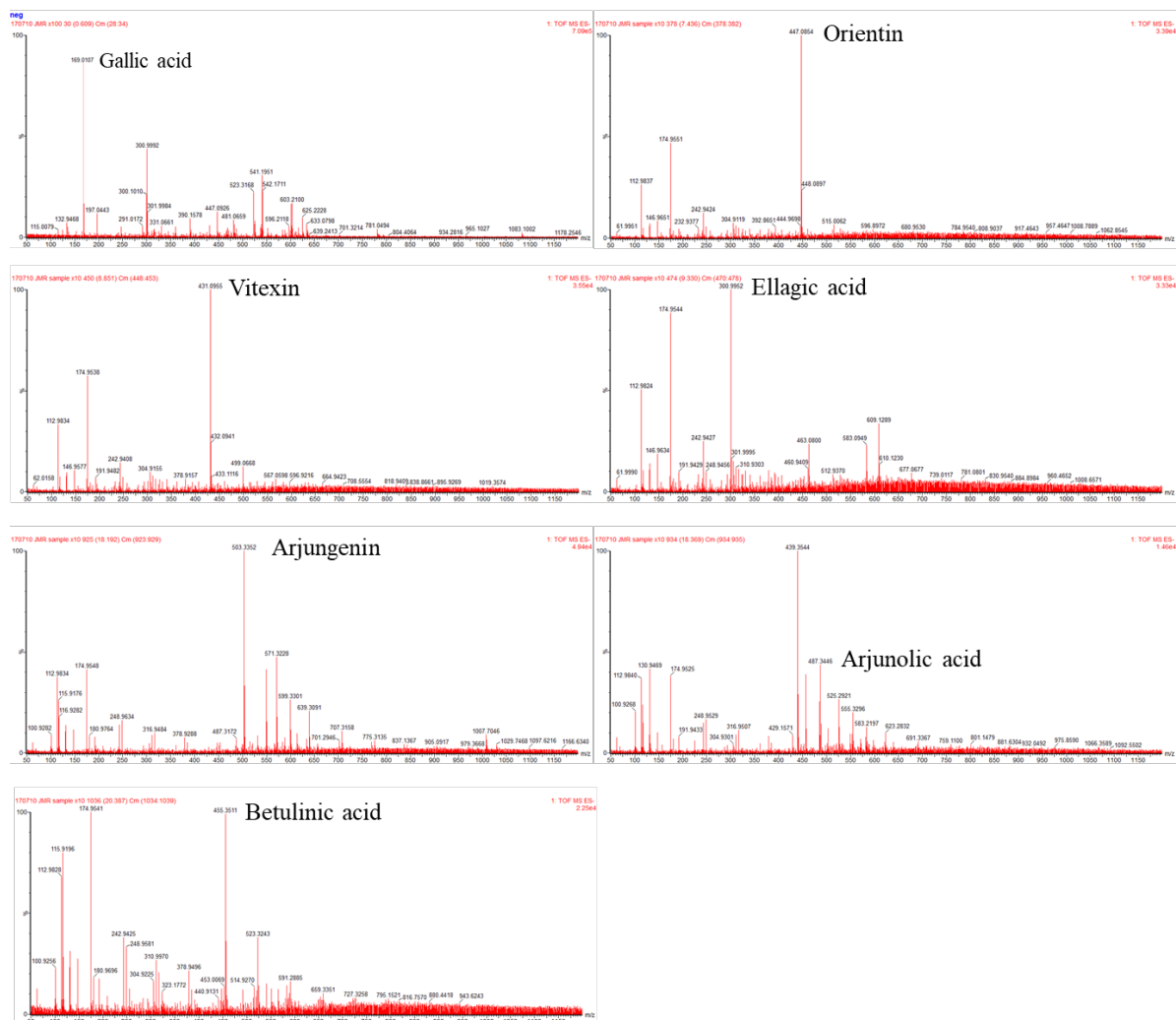


Figure S1. UPLC-QTOF-MS fragments of TCE.

Table S1. Influence of TCE on survival rate in various strains

Genotypes	TCE concentrations ($\mu\text{g/mL}$)	Conditions	Mean lifespans ^a	Maximum lifespans ^b	P-value ^c
N₂	0	Normal	18.13 \pm 1.22 ^e		
	6.25		23.94 \pm 1.81		< 0.05
	12.5		26.80 \pm 1.95		< 0.001
	25		22.04 \pm 1.54		0.0520
	0	2% Glucose	12.73 \pm 0.46		
	6.25		18.83 \pm 0.85		< 0.001
	12.5		17.40 \pm 0.81		< 0.001
	25		19.32 \pm 0.69		< 0.001
daf-16	0	Normal	15.64 \pm 0.45		
	6.25		17.47 \pm 0.52		< 0.05
	12.5		18.29 \pm 0.84		< 0.05
	25		18.52 \pm 1.18		< 0.05
	0	2% Glucose	17.46 \pm 0.45		
	6.25		18.61 \pm 0.63		< 0.05
	12.5		16.02 \pm 0.49		0.1207
	25		18.43 \pm 0.60		< 0.05
skn-1	0	Normal	12.82 \pm 0.41		
	6.25		12.88 \pm 0.38		0.9790
	12.5		13.26 \pm 0.35		0.7669
	25		11.61 \pm 0.44		< 0.05
	0	2% Glucose	11.04 \pm 0.27		
	6.25		11.21 \pm 0.25		0.6049
	12.5		11.14 \pm 0.33		< 0.05
	25		12.36 \pm 0.30		< 0.001
aak-1	0	Normal	16.04 \pm 1.20		
	6.25		21.18 \pm 1.04		< 0.001
	12.5		19.22 \pm 1.09		0.1534
	25		17.82 \pm 1.11		0.4360
	0	2% Glucose	15.68 \pm 1.19		
	6.25		15.94 \pm 1.19		0.9537
	12.5		16.65 \pm 1.50		0.9844
	25		14.98 \pm 1.63		0.6797
atgl-1	0	Normal	26.80 \pm 0.86		
	6.25		28.63 \pm 1.06		< 0.05
	12.5		29.35 \pm 1.04		< 0.01
	25		28.13 \pm 1.24		0.2019
	0	2% Glucose	25.09 \pm 1.03		
	6.25		25.58 \pm 1.08		0.9037
	12.5		24.77 \pm 1.28		0.7051
	25		24.49 \pm 1.35		0.4260

Worms were treated with TCE from the L4 stage. Survival was recorded every other day until all worms died. The statistically data was generated by the OASIS application ($p < .05$).

a: the mean lifespan was referred to the time when the survival rate dropped to 50%.

b: the maximum lifespan means end points (days) of the lifespan of the worm.

c: P-values were analyzed by log-rank (Mantel-Cox method) tests.

d: days \pm standard error