

Supplementary Materials

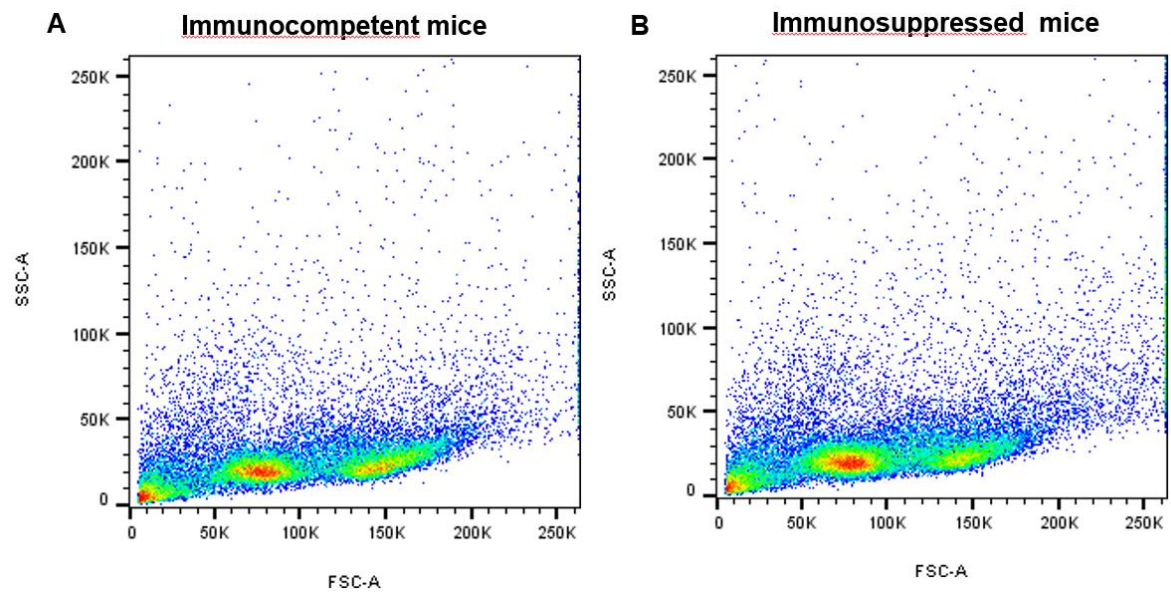


Figure S1. Forward (FSC) and side scatter (SSC) images of splenocytes isolated from the spleens of immunocompetent (A) and immunosuppressed (B) C57BL/6 mice. One representative image has been shown per group.

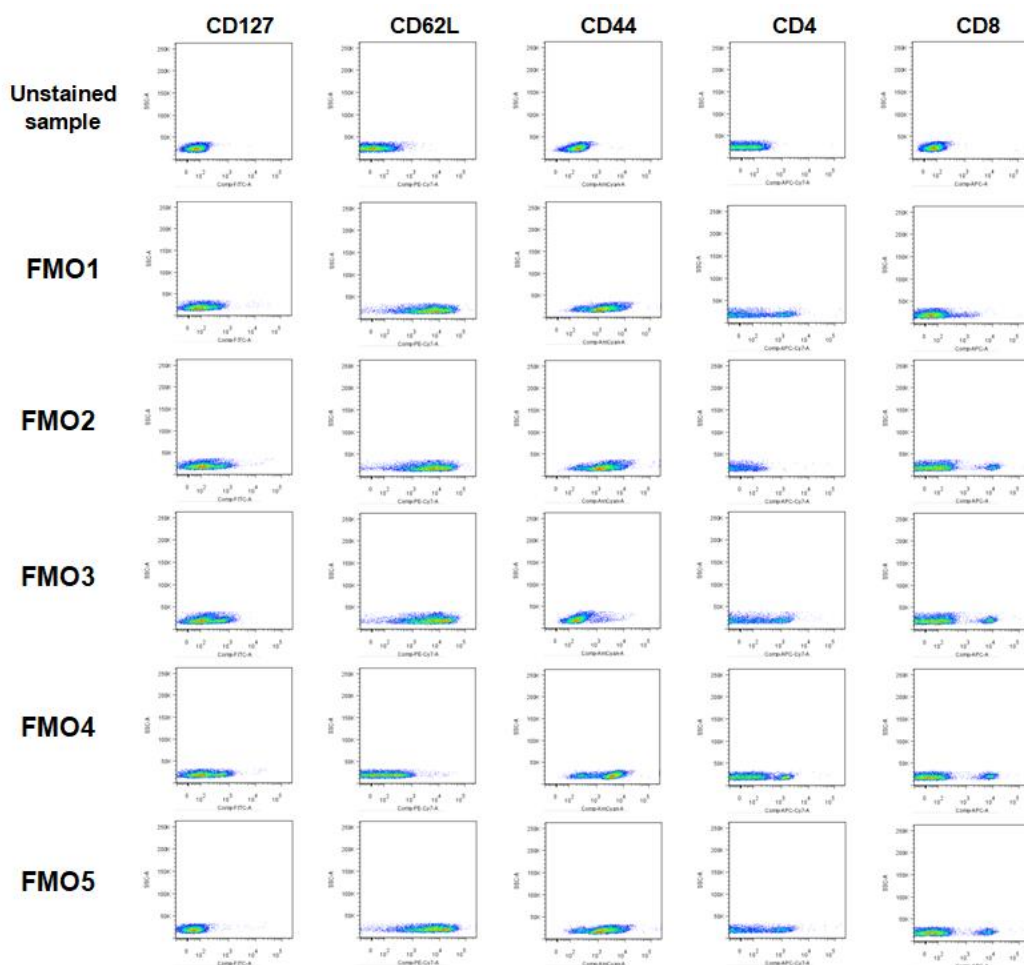


Figure S2. Fluorescence minus one (FMO) controls of splenocytes stained with all of the fluorochromes (CD127 FITC, CD62L, PE-VIO770, CD44 V500, CD4 APC-CY7, CD8 APC) minus one of them. FMO1 control containing all fluorochromes except CD8 APC; CD4 APC-CY7 (FMO2); CD44 V500 (FMO3); CD62L PE-VIO770 (FMO4); and CD127 FITC (FMO5).

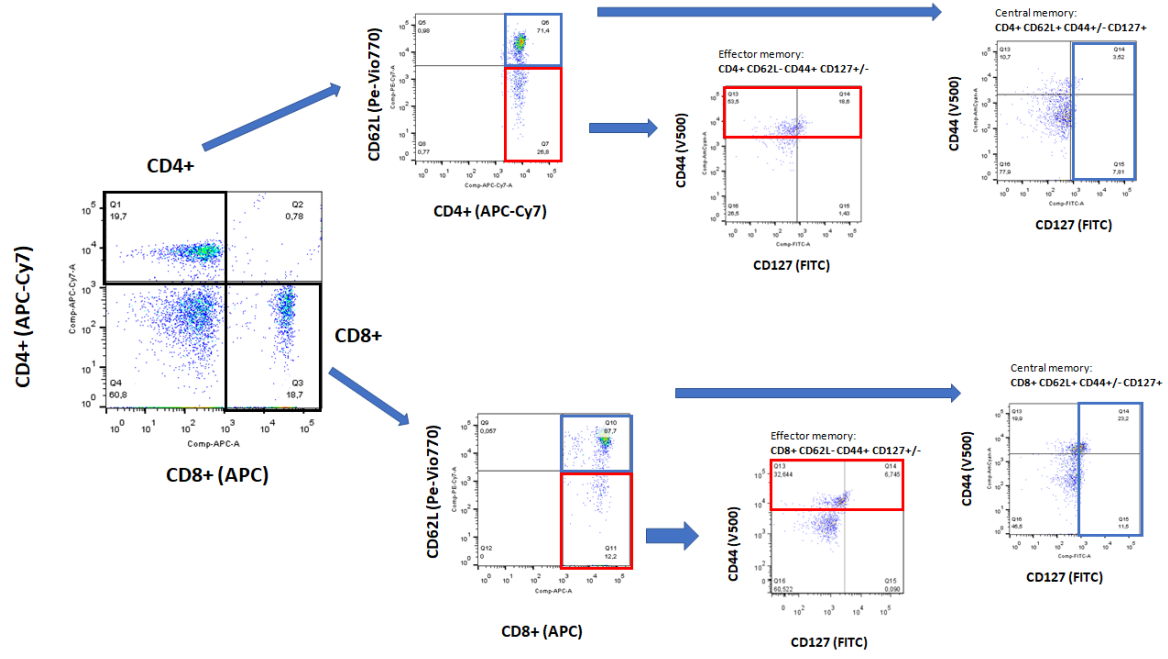


Figure S3. Representative gating strategy to identify CD4⁺ and CD8⁺ T-cell subsets expressing markers for TCM and TEM in the murine spleens.