

Supplementary material

Enrichment of Nutmeg Essential Oil from Oil-in-Water

Emulsions with PAN-Based Membranes

Huilan Yin ¹, Haoyu Zhang ¹, Jiaoyang Cui ¹, Qianlian Wu ¹, Linlin Huang ¹,
Jiaoyue Qiu ¹, Xin Zhang ¹, Yanyu Xiang ¹, Bo Li ^{1,2}, Hongbo Liu ³, Zhishu Tang ³,
Yue Zhang ^{1,*} and Huaxu Zhu ^{1,*}

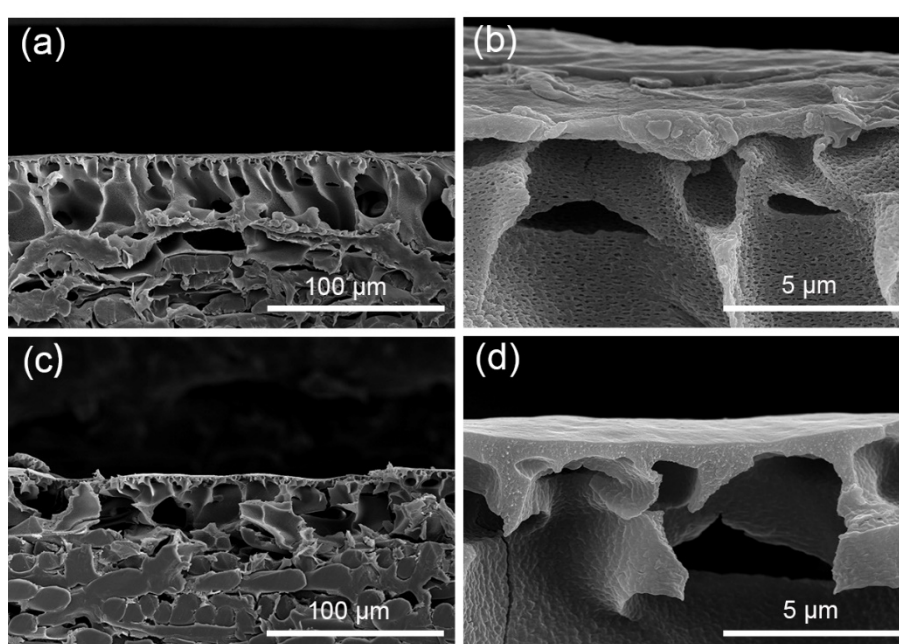


Figure S1. The SEM cross sections of (a, b) PAN and (c, d) H-PAN membranes.

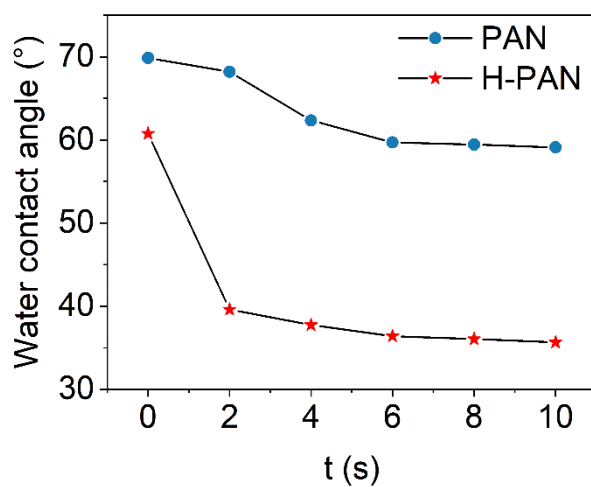


Figure S2. Dynamic water contact angle of PAN and H-PAN membranes.

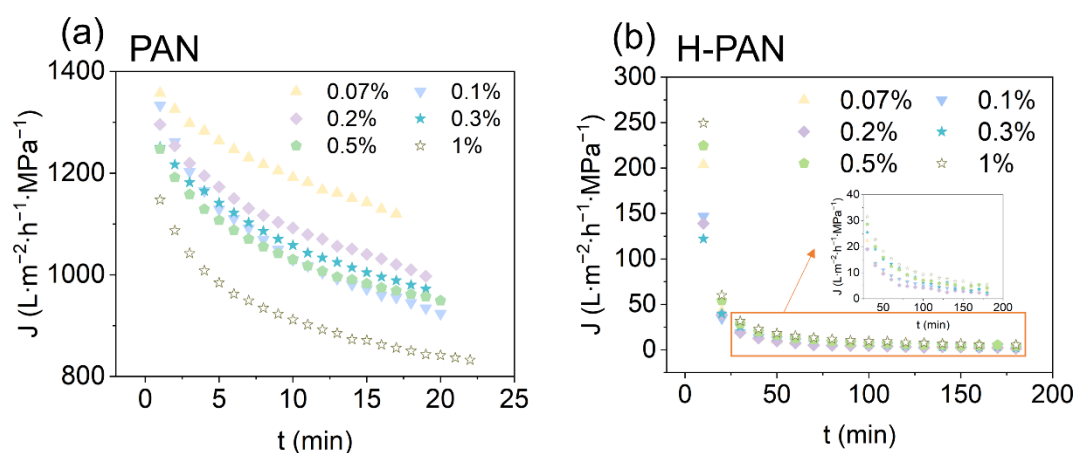


Figure S3. The permeation flux variations of different concentrations of nutmeg essential oil-in-water emulsion on (a) PAN and (b) H-PAN membranes.

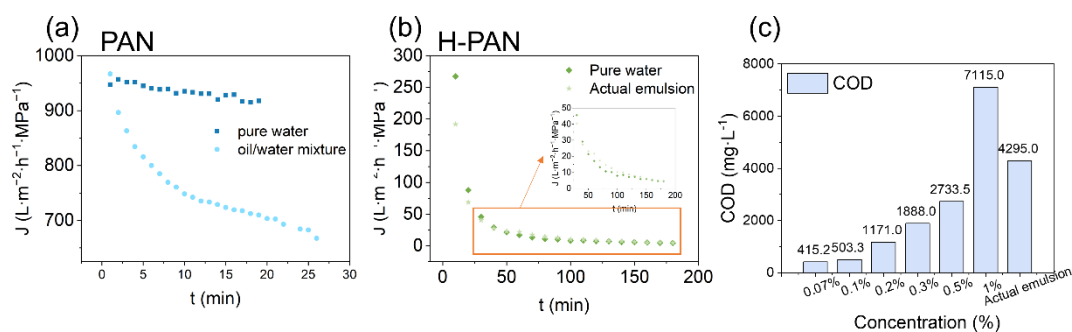


Figure S4. The permeation flux variations of water and nutmeg essential oil-in-water emulsions on (a) PAN and (b) H-PAN membranes; (c) The COD of different concentrations of nutmeg essential oil-in-water emulsions.

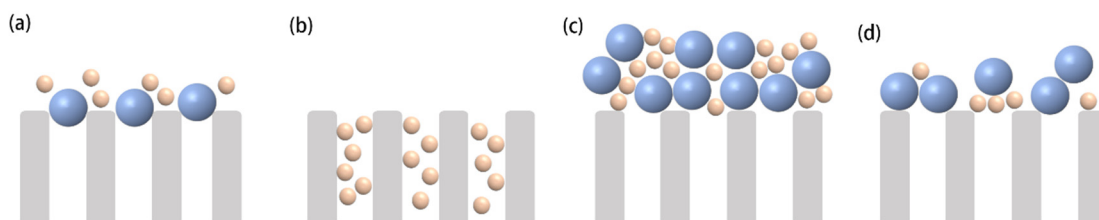


Figure S5. The schematic diagram of the Hermia model. (a) complete blocking model; (b) standard blocking model; (c) cake blocking model; (d) intermediate blocking model.

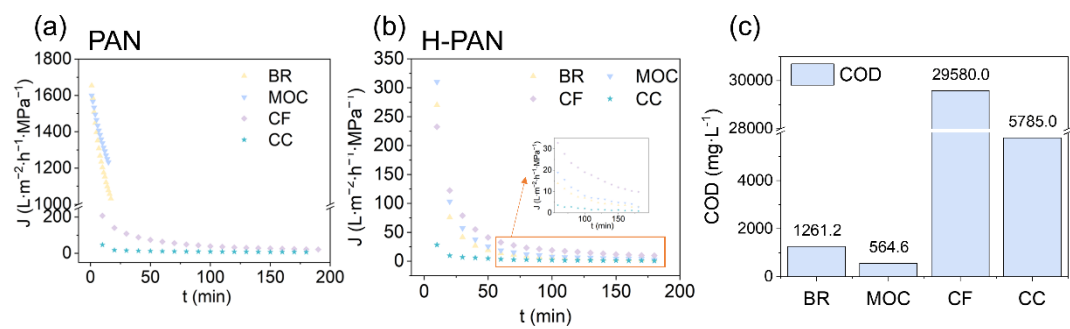


Figure S6. The permeation flux variations of BR, MOC, CF and CC essential oil-in-water emulsions on (a) PAN and (b) H-PAN membranes; (c) The COD of BR, MOC, CF and CC essential oil-in-water emulsions.