



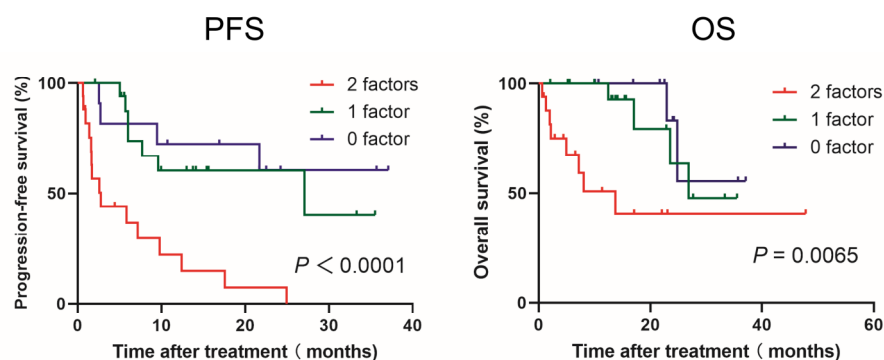
Article

Prognostic Value of Absolute Lymphocyte Count in Patients with Advanced Renal Cell Carcinoma Treated with Nivolumab Plus Ipilimumab

Kosuke Ueda *, Naoyuki Ogasawara, Naoki Ito, Satoshi Ohnishi, Hiroki Suekane, Hirofumi Kurose, Tasuku Hiroshige, Katsuaki Chikui, Keiichiro Uemura, Kiyoaki Nishihara, Makoto Nakiri, Shigetaka Suekane and Tsukasa Igawa

Department of Urology, Kurume University School of Medicine, Kurume, Japan

* Correspondence: ueda_kousuke@med.kurume-u.ac.jp; Tel.: +81-942-31-7572



Citation: Ueda, K.; Ogasawara, N.; Ito, N.; Ohnishi, S.; Suekane, H.; Kurose, H.; Hiroshige, T.; Chikui, K.; Uemura, K.; Nishihara, K.; et al. Prognostic Value of Absolute Lymphocyte Count in Patients with Advanced Renal Cell Carcinoma Treated with Nivolumab Plus Ipilimumab. *J. Clin. Med.* **2023**, *12*, 2417. <https://doi.org/10.3390/jcm12062417>

Academic Editor: Cristian Fiori

Received: 7 February 2023

Revised: 13 March 2023

Accepted: 20 March 2023

Published: 21 March 2023



Copyright: © 2023 by the authors. Submitted for possible open access publication under the terms and conditions of the Creative Commons Attribution (CC BY) license (<https://creativecommons.org/licenses/by/4.0/>).

Figure S1. Kaplan–Meier curves comparing progression-free survival and overall survival in patients with advanced renal cell carcinoma treated with nivolumab plus ipilimumab according to risk classification by prior nephrectomy and absolute lymphocyte count.