

Physical Characterization and In Vitro Toxicity Test of PDMS Synthesized from Low Grade D4 Monomer as A Vitreous Substitute in the Human Eyes

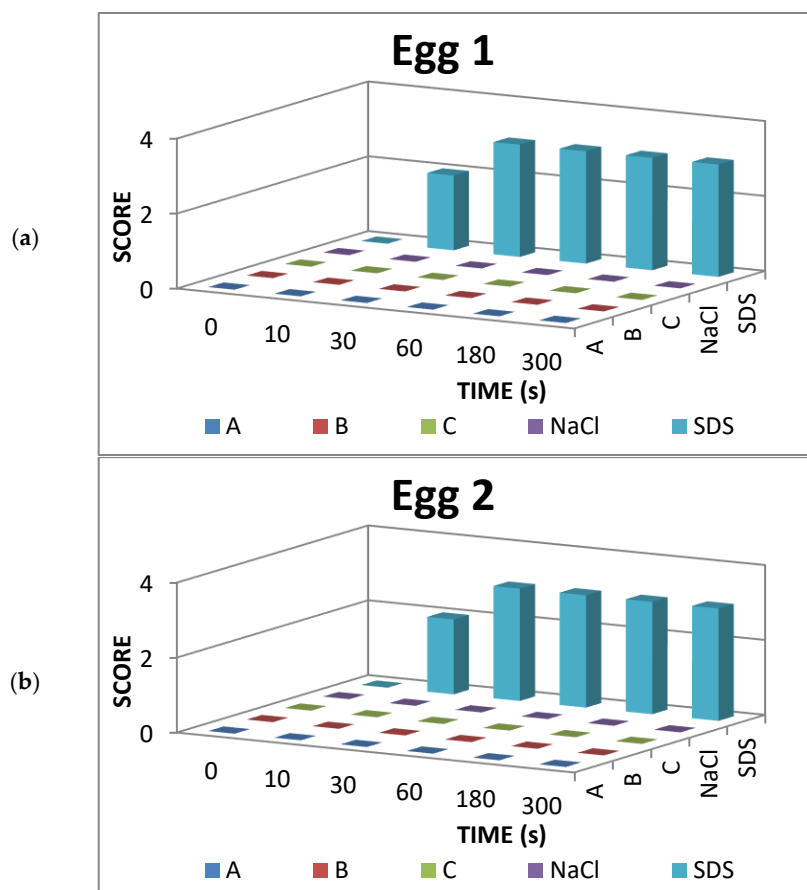
Diba Grace Auliya ^{1,*}, Soni Setiadji ^{2,3}, Fitrilawati Fitrilawati ¹ and Risdiana Risdiana ^{1,*}

¹ Department of Physics, Faculty of Mathematics and Natural Sciences, Universitas Padjadjaran, Jl. Raya Bandung-Sumedang km 21 Jatinangor, Sumedang 45363, Indonesia; fitrilawati@phys.unpad.ac.id (FF)

² Department of Chemistry, Faculty of Mathematics and Natural Sciences, Universitas Padjadjaran, Jl. Raya Bandung-Sumedang km 21 Jatinangor, Sumedang 45363, Indonesia; s.setiadji@uinsgd.ac.id (SS)

³ Department of Chemistry, Faculty of Sciences and Technology, UIN Sunan Gunung Djati Bandung, Jl. A.H. Nasution No. 105 Cibiru, Bandung 40614, Indonesia

* Correspondence: diba15001@mail.unpad.ac.id (DGA); risdiana@phys.unpad.ac.id (RR)



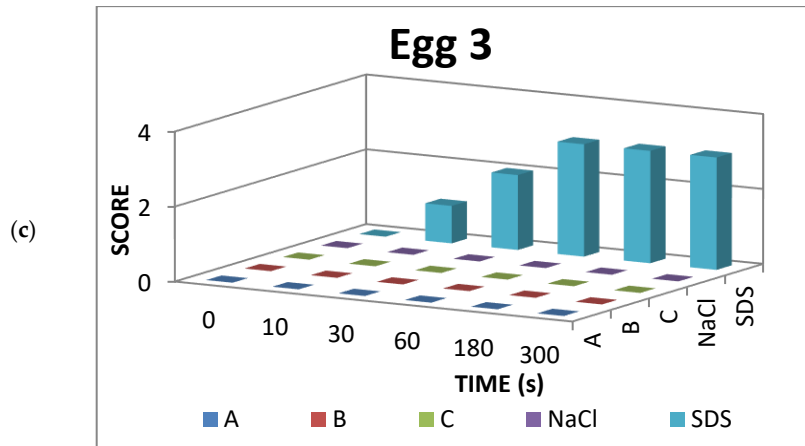
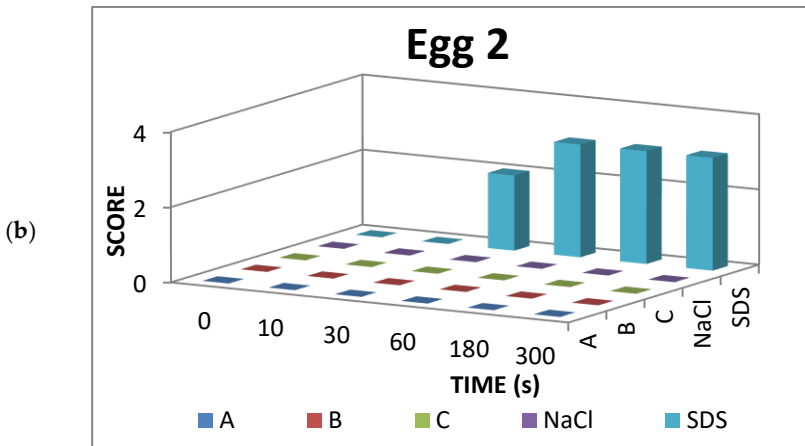
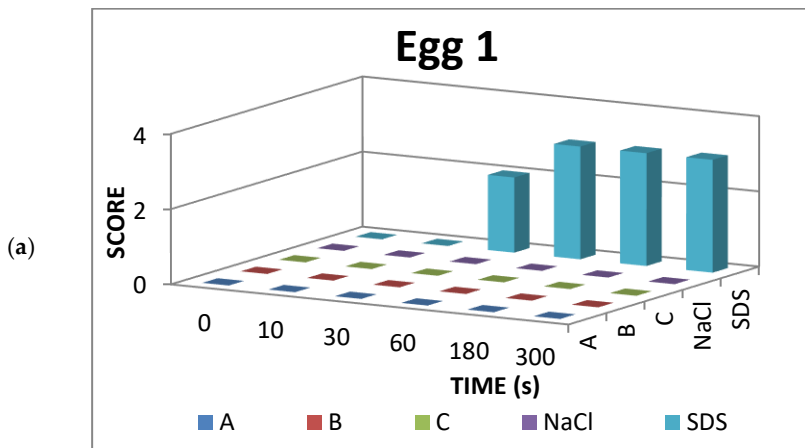


Figure S1. Hemorrhage score of (a) egg 1, (b) egg 2, and (c) egg 3. Egg 1 and egg 2 showed same score at the same time. Egg 3 had a different score for SDS at 10s and 30s with score of 1 and 2 while the other eggs had score of 2 and 3. Only SDS (positive control) had a hemorrhage in the egg's veins.



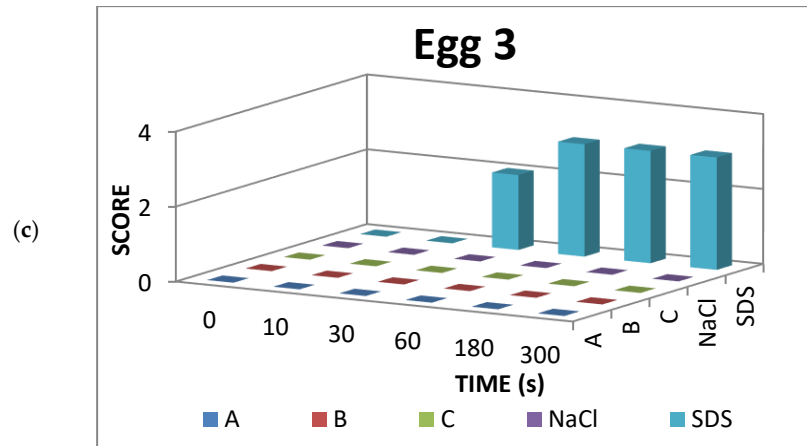
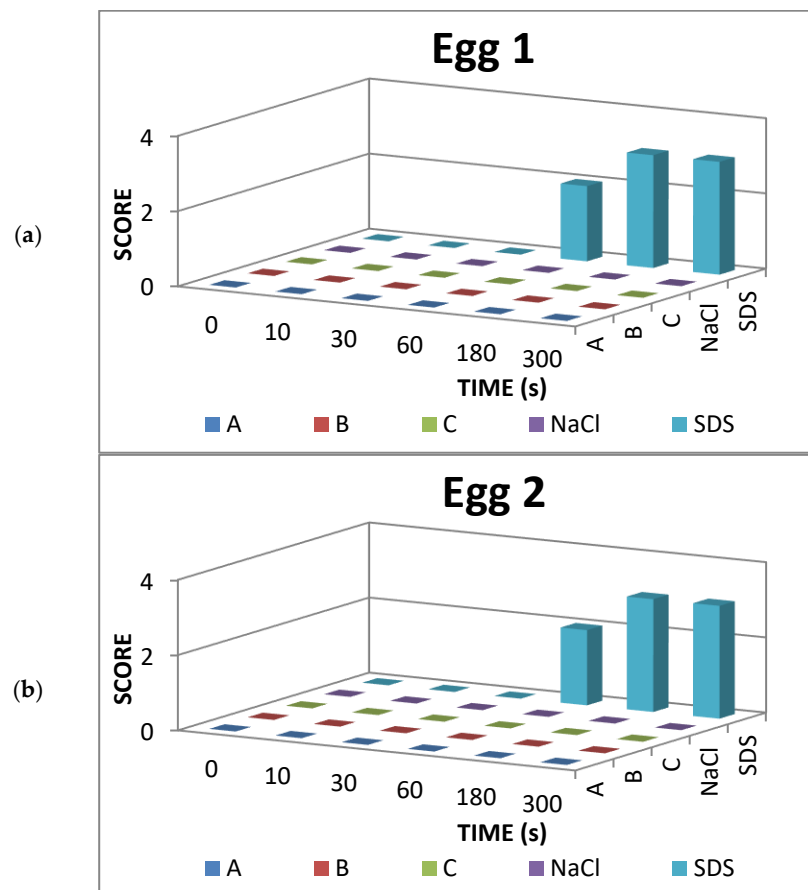


Figure S2. Lysis score of (a) egg 1, (b) egg 2 and (c) egg 3. All eggs showed same score at the same time. Only SDS (positive control) had a lysis in the egg's veins.



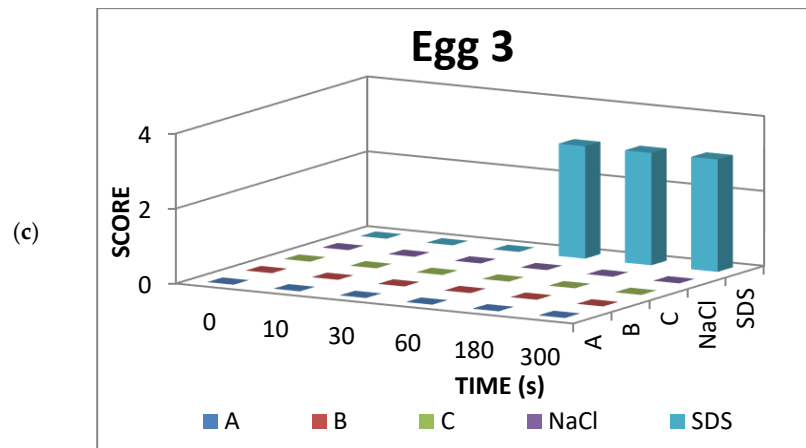


Figure S3. Coagulation score of (a) egg 1, (b) egg 2 and (c) egg 3. Egg 3 had a different score for SDS at 60s with score of 2 while the other eggs had score of 3. Only SDS (positive control) had a coagulation in the egg's veins.

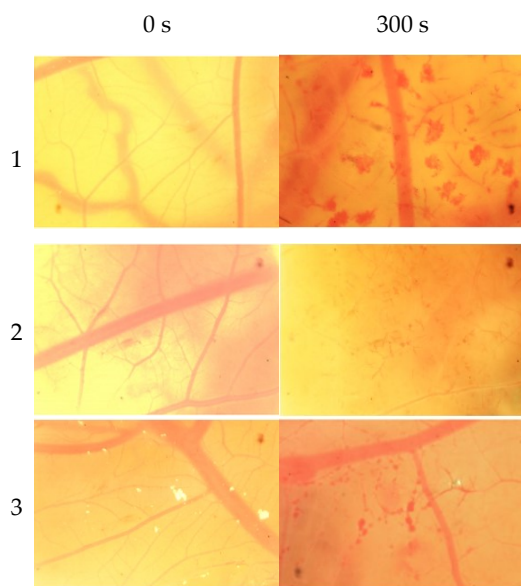


Figure S4. Vessels of positive control. The numbers 1, 2 and 3 represent egg 1, 2, and 3 for positive control group. All vessels of positive control group were damaged at 300s during HET-CAM test.

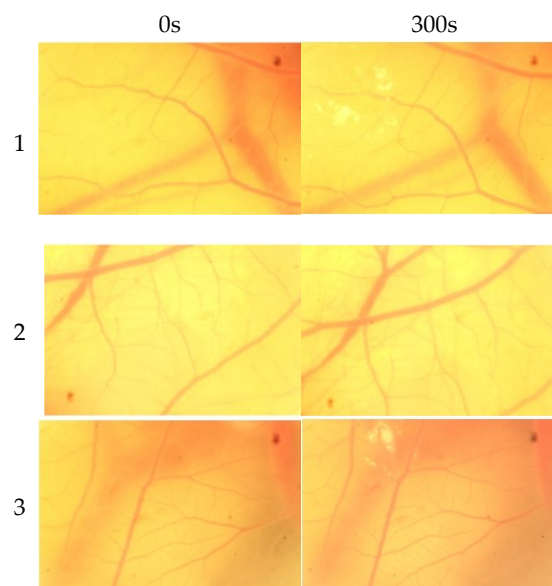


Figure S5. Vessels of sample A. The numbers 1, 2 and 3 represent egg 1, 2, and 3 for sample A group. All vessels of sample A group were not damaged during HET-CAM test.

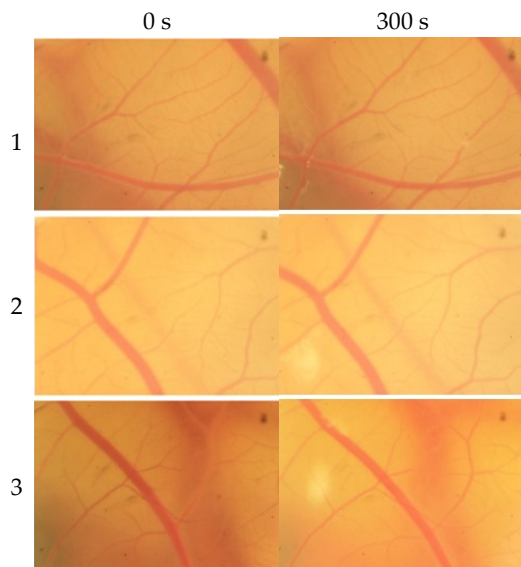


Figure S6. Vessels of sample B. The numbers 1, 2 and 3 represent egg 1, 2, and 3 for sample B group. All vessels of sample B group were not damaged during HET-CAM test.

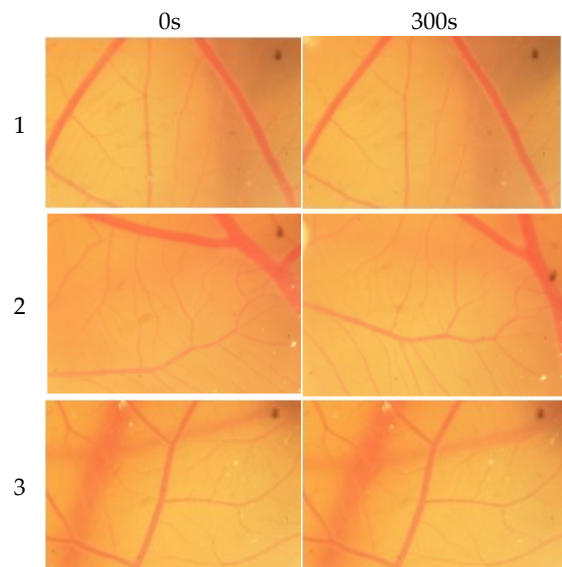


Figure S7. Vessels of sample C. The numbers 1, 2 and 3 represent egg 1, 2, and 3 for sample C group. All vessels of sample C group were not damaged during HET-CAM test.

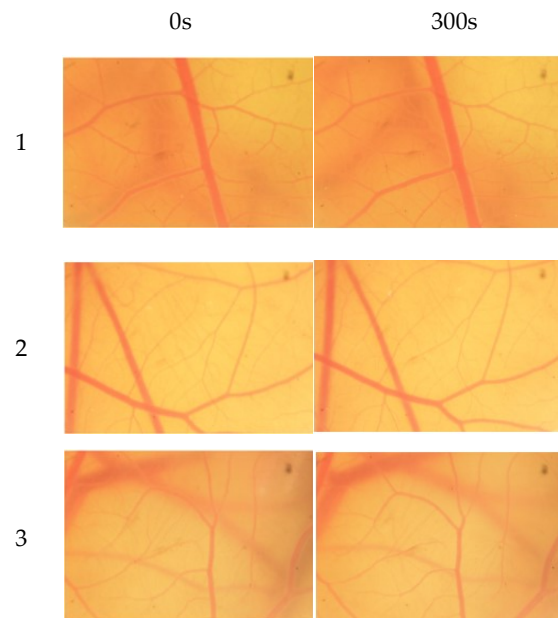


Figure S8. Vessels of the negative control. The numbers 1, 2 and 3 represent egg 1, 2, and 3 for negative control group. All vessels of sample C were not damaged during HET-CAM test.