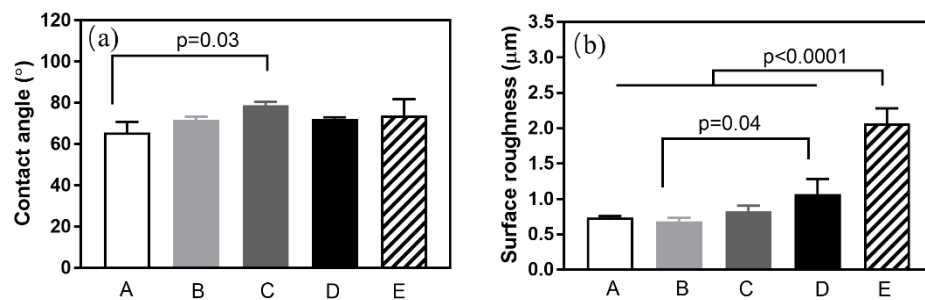
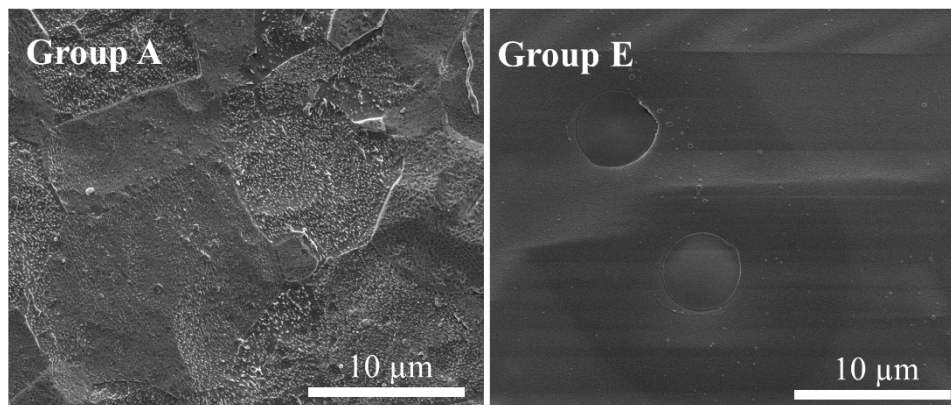


Supplementary Figure S1 (a) Water contact angles and (b) surface roughness (Ra) of different samples.



Supplementary Figure S2 SEM micrographs of samples from Groups A and E after immersion in DMEM for 2 d; note 1) the smoother and more featureless surface (i.e., coating) on Group E sample vs. the grainy texture of Group A; 2) two circular structures on Group E sample are the “footprints” of two original CuCl_2 particles dissolved during immersion.



Supplementary Figure S3 SEM images of Ti discs after co-culture with *S. aureus* for

6 h

