

Supporting Information

Copper cobalt sulfide structures derived from MOF precursors with enhanced electrochemical glucose sensing properties

Daojun Zhang,^{a*} Xiaobei Zhang,^{a,b} Yingping Bu,^{a,b} Jingchao Zhang,^a Renchun Zhang^a

^a College of Chemistry and Chemical Engineering, Anyang Normal University,
Anyang 455000, Henan, China

^b College of Chemistry, Zhengzhou University, 100 Science Road, Zhengzhou
450001, Henan, P. R. China

* Corresponding author. Tel.: +86 372 2900040.

E-mail: zhangdj0410@sohu.com; zhangdj0410@126.com

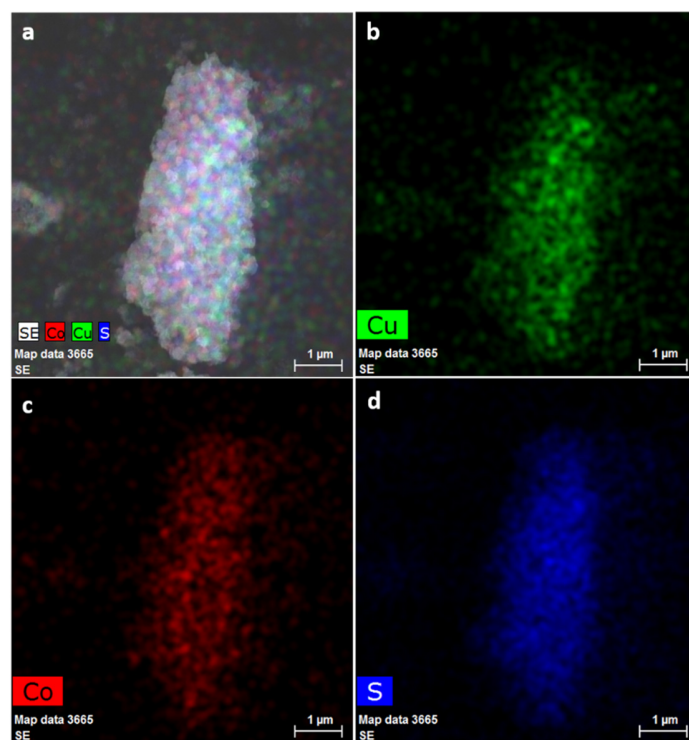


Figure S1. EDX elemental mapping images of Co-CuS-1 sample. (a) an overlap image of Cu, Co, and S for Co-CuS-1, elemental mapping of (b) Cu, (c) Co, and (d) S, respectively.

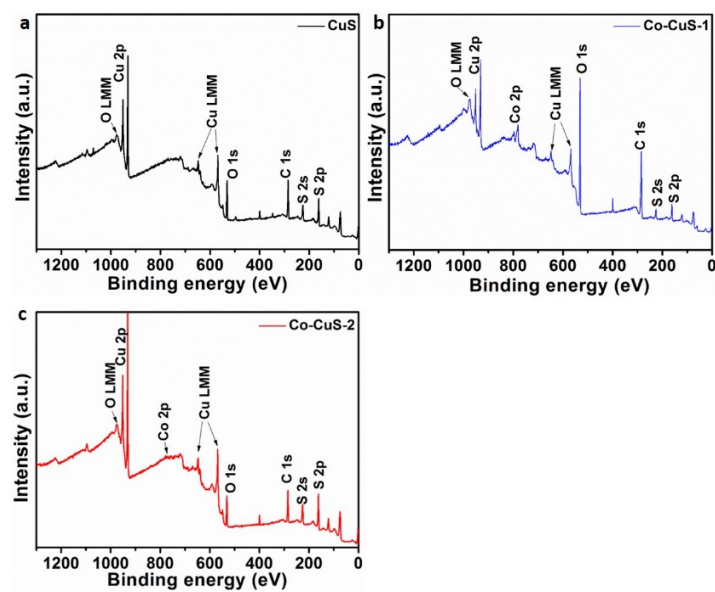


Figure S2 XPS survey spectra of (a) CuS-1, (b) Co-CuS-1 and (c) Co-CuS-2 samples.