

Supplementary Materials

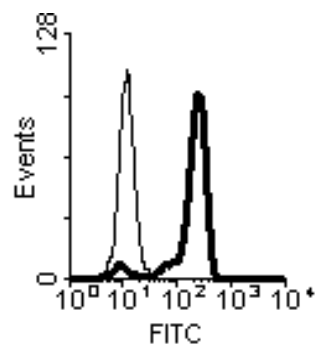


Figure S1. CD14 expression on the surface of primary human peripheral blood monocytes according to flow cytometry. Note: FITC-labeled cells are shown on the histogram with a bold line; isotypic control is shown on the histogram with a thin line.

CLUSTAL O(1.2.4) multiple sequence alignment

```

zoocin_A          GHVGVDYA--VPVGTPVRAVANGTVKFAAGNGANHPWMLWMAGNCV--LIQHADGMHTGYA56
zoocin_A_peptidase_family_M23 FHAGFDLKTNQREGLNVYAVADGYVSRK-----ISTFGNGKCI--YVTHPNGYTSVYG52
BLF3872          -HDGWDFQQTWGGQNVVAVHDGTVYKVA-----YSSDGRDWHV--DVKSDDGWYETYQ51
enterolysin_A    FHDGFDFGSAIYGNQSVYAVHDGKILYAG-----WDPVGGGSLGAFIVLQAGNTNVIYQ54
                  * * *      . * ** : * :      .      :      ..      *

zoocin_A          HL----SKISVSTDSTVKQGQIIGYTGATGQVTGPHLHFEMLP-----95
zoocin_A_peptidase_family_M23 HLQT-----95
BLF3872          EGFLSKSDIAVKVGDKVKVGDKI-----GTLTGTHLHLGVSKTEIEKAQSSWNKDDGTW105
enterolysin_A    EFSRNVGDIKVSTGQTVKKGQLI-----GKFTSSHLHLGMTKKE-----93
                  .

zoocin_A          ----- 95
zoocin_A_peptidase_family_M23 ----- 56
BLF3872          KNPLDIISGGGSSDSSSPK 124
enterolysin_A    ----- 93

```

Figure S2. Alignment of sequences of class III bacteriocins: BLF3872, enterolysin A from *E. faecalis* LMG 2333, zoocin A from *S. zooepidemicus*, and zoocin A peptidase family M23 from *F. johnsoniae* (Clustal Omega program (<https://www.ebi.ac.uk/Tools/msa/clustalo/>), accessed on 27 September 2022). Identical, conserved and semi-conserved residues are denoted as "*", ":" and "." respectively.

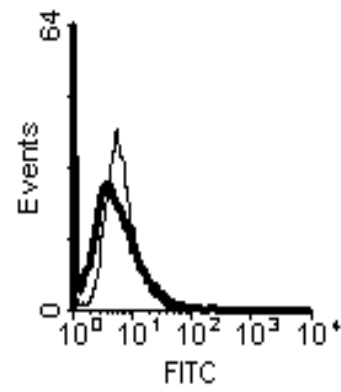


Figure S3. Absence of CD14 expression on the surface of IDC derived from human peripheral blood monocytes. Note: FITC-labeled cells are shown on the histogram with a bold line; isotypic control is shown on the histogram with a thin line.