

## Supplementary Figures

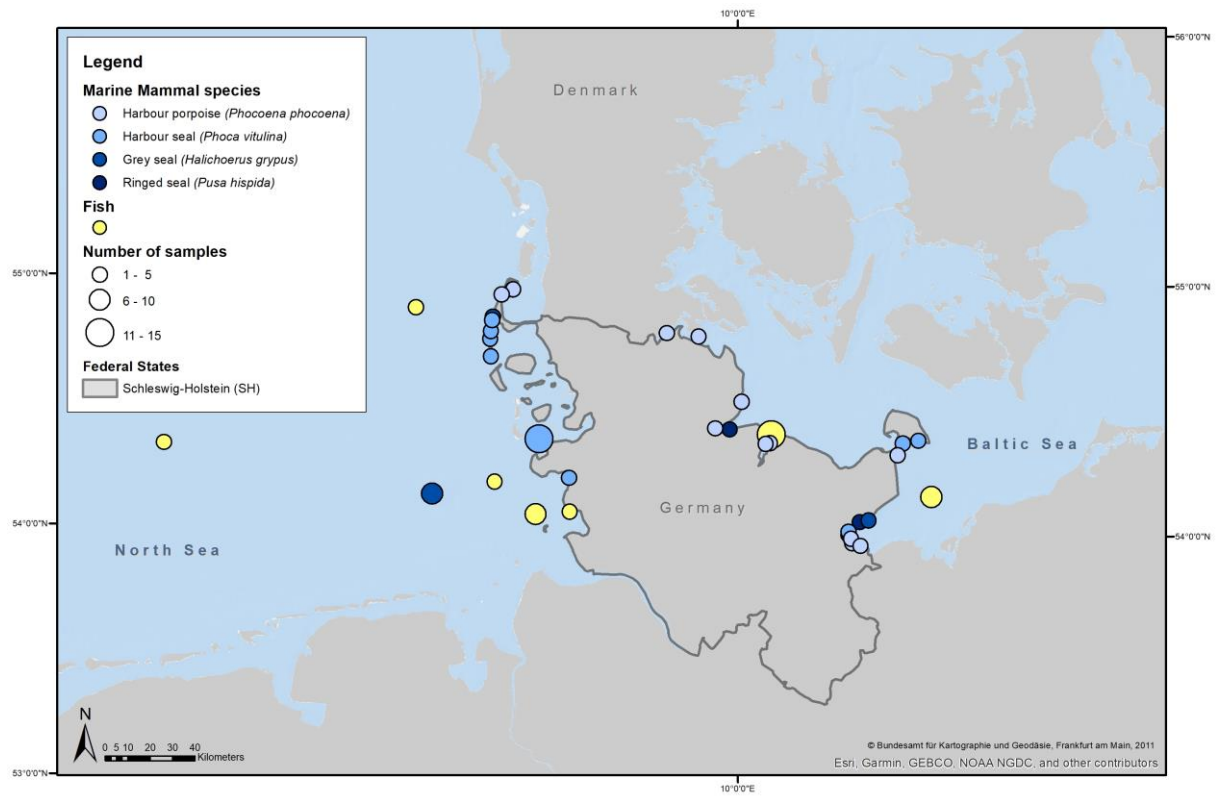


Figure S1: The map depicts the samples of fishes and marine mammals from the North and Baltic Sea coasts of Schleswig-Holstein, Germany.

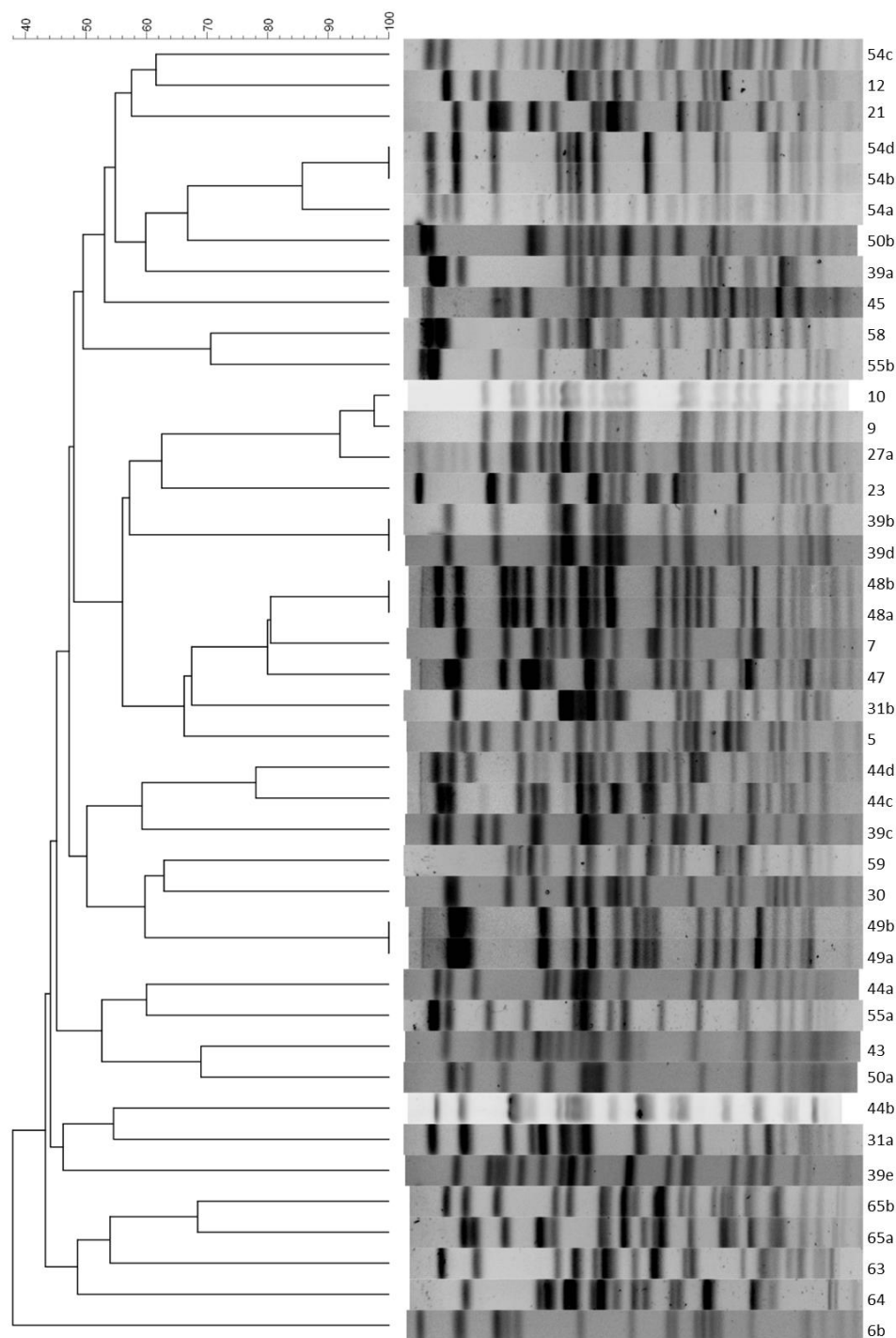


Figure S2: The figure shows the dendrogram including the pulsed-field gel electrophoresis band patterns of the 42 isolates that were typeable by XbaI macrorestriction.