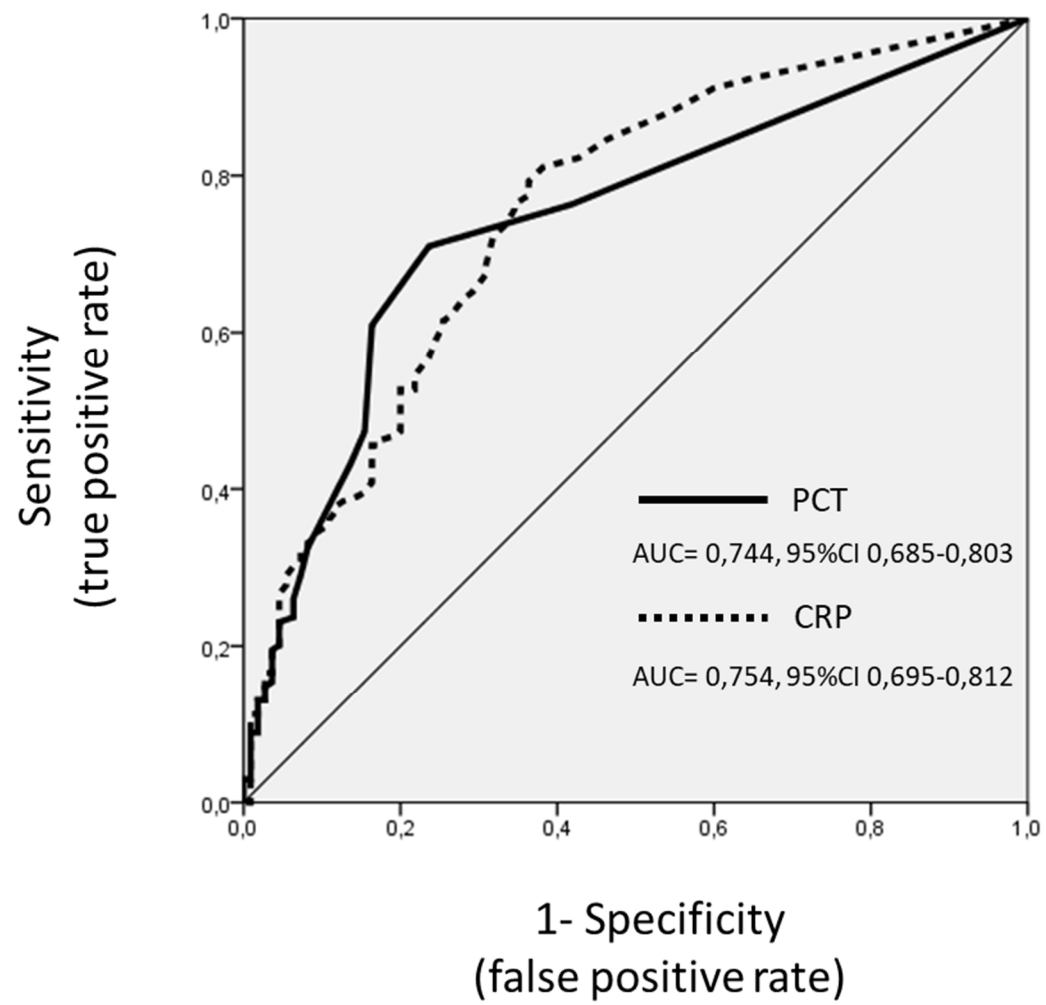


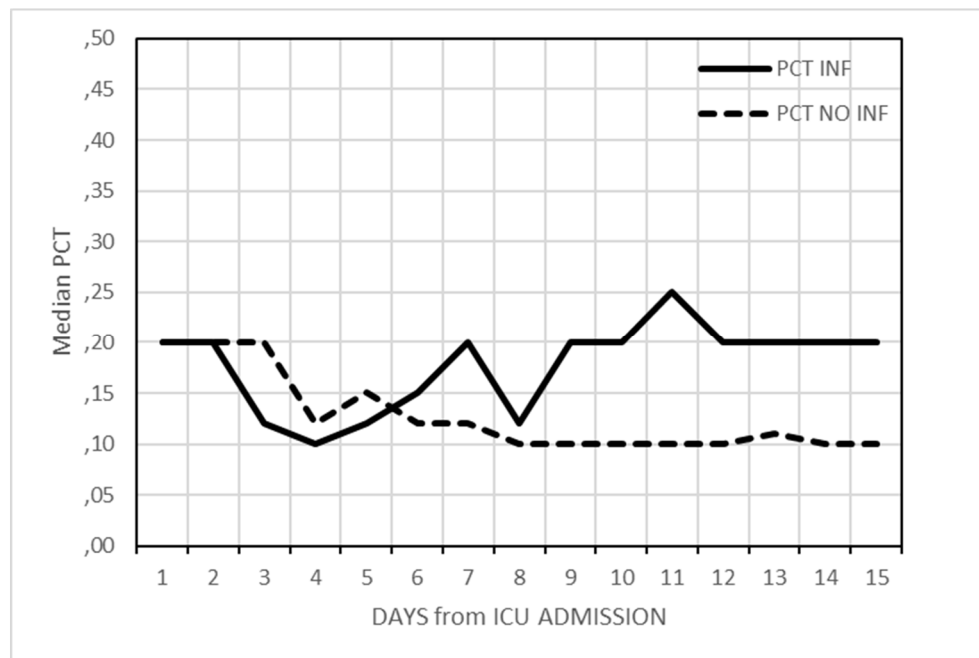
**Table S1.** CRP and PCT values at and after infection diagnosis.

	<b>All Patients</b> <b>(n = 279)</b>	<b>No Infection</b> <b>(n = 110)</b>	<b>Yes Infection</b> <b>(n = 169)</b>	<b>p Value</b>
<b>PCT D -1 (ng/mL; median, IQR)</b>	0.1 (0.1–0.3)	0.1 (0.1–0.1)	0.2 (0.1–0.4)	<0.001
<b>PCT D +0 (ng/mL; median, IQR)</b>	0.2 (0.1–0.6)	0.1 (0.1–0.1)	0.3 (0.1–1.0)	<0.001
<b>PCT D +1 (ng/mL; median, IQR)</b>	0.3 (0.1–0.9)	0.1 (0.1–0.2)	0.4 (0.2–1.2)	<0.001
<b>CRP D -1 (mg/dL; median, IQR)</b>	1.2 (0.1–4.7)	0.4 (0.1–2.1)	2.1 (0.5–7.2)	<0.001
<b>CRP D +0 (mg/dL; median, IQR)</b>	1.8 (0.3–5.8)	0.4 (0.1–2.2)	3.2 (1.2–12.8)	<0.001
<b>CRP D +1 (mg/dL; median, IQR)</b>	1.6 (0.1–6.2)	0.2 (0.1–1.2)	3.9 (1.1–16.7)	<0.001

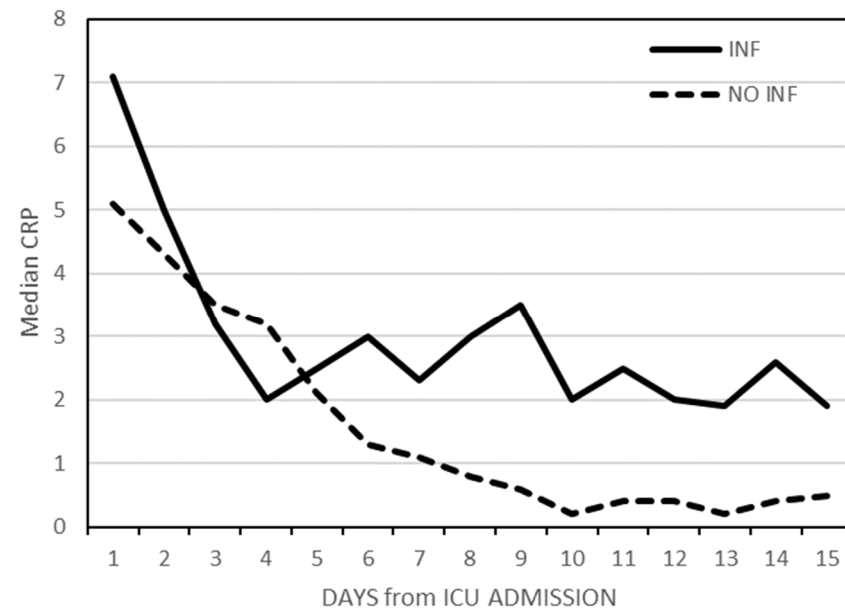
D -1: Day before infection or day 10 after ICU admission; D +0: day of infection diagnosis or day 11 after ICU admission, D + 1 the day after diagnosis of infection or day 12 after ICU admission.



**Figure S1.** Receiver operating characteristic curve for PCT (solid line) and CRP (dotted line).



**Figure S2.** Median PCT values in patients with and without infections acquired in ICU in the first 14 days after ICU admission.



**Figure S3.** Median CRP values in patients with and without infections acquired in ICU in the first 14 days after ICU admission.