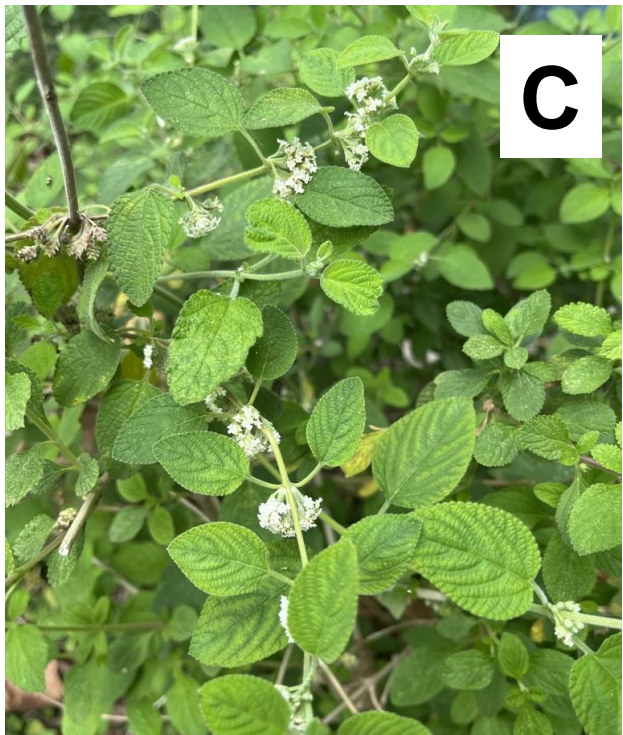
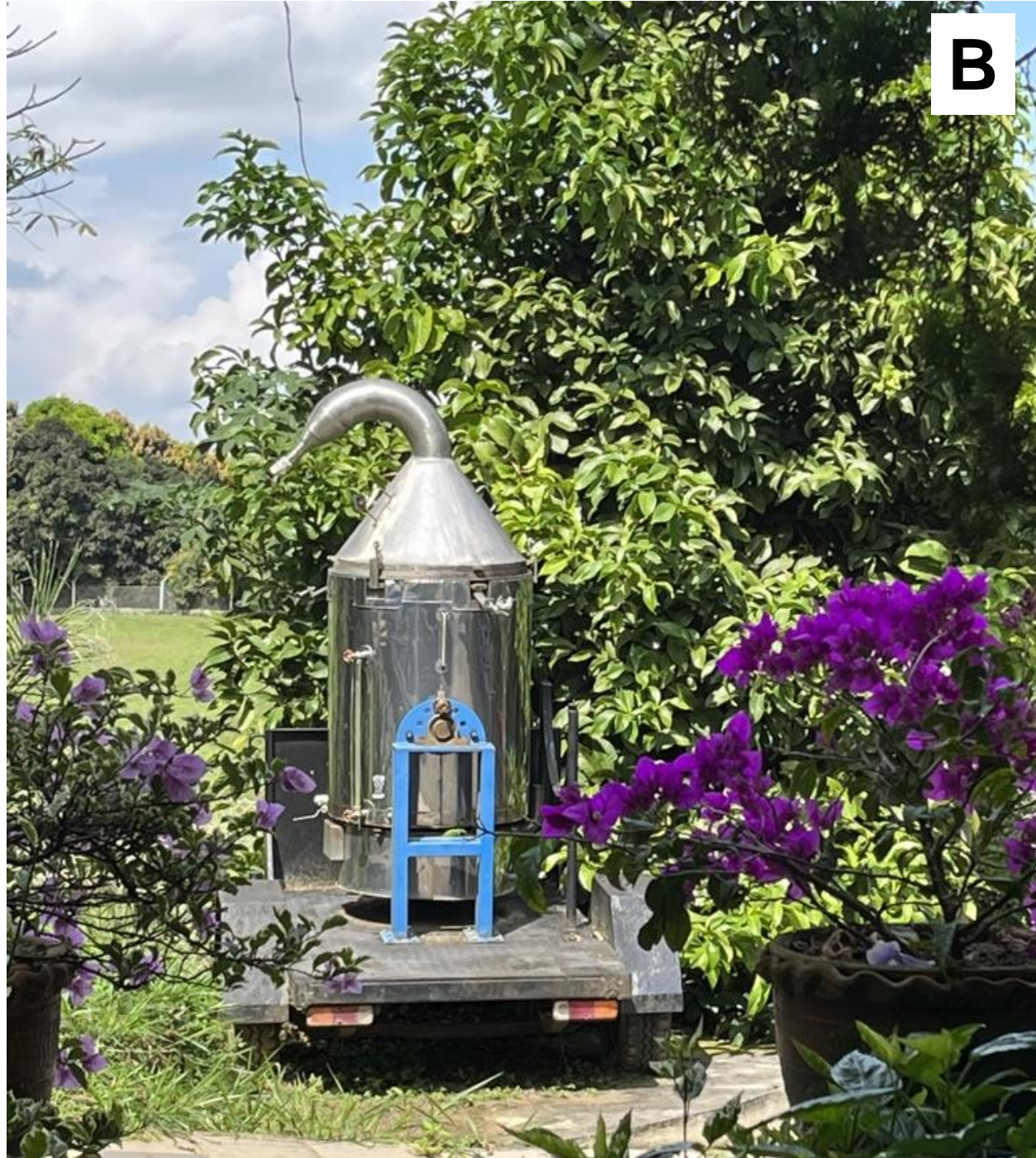


Supplementary Material

Figure S1.

- A. Aromatic plant cultivation plots at the CENIVAM research centre (Industrial University of Santander, Bucaramanga, Colombia).
- B. Distillation facilities (one of the stainless-steel alembic used in research projects).
- C. Lippia origanoides (Verbenaceae family) plant.
- D. Satureja viminea (Lamiaceae family) plant.



Supplementary Material

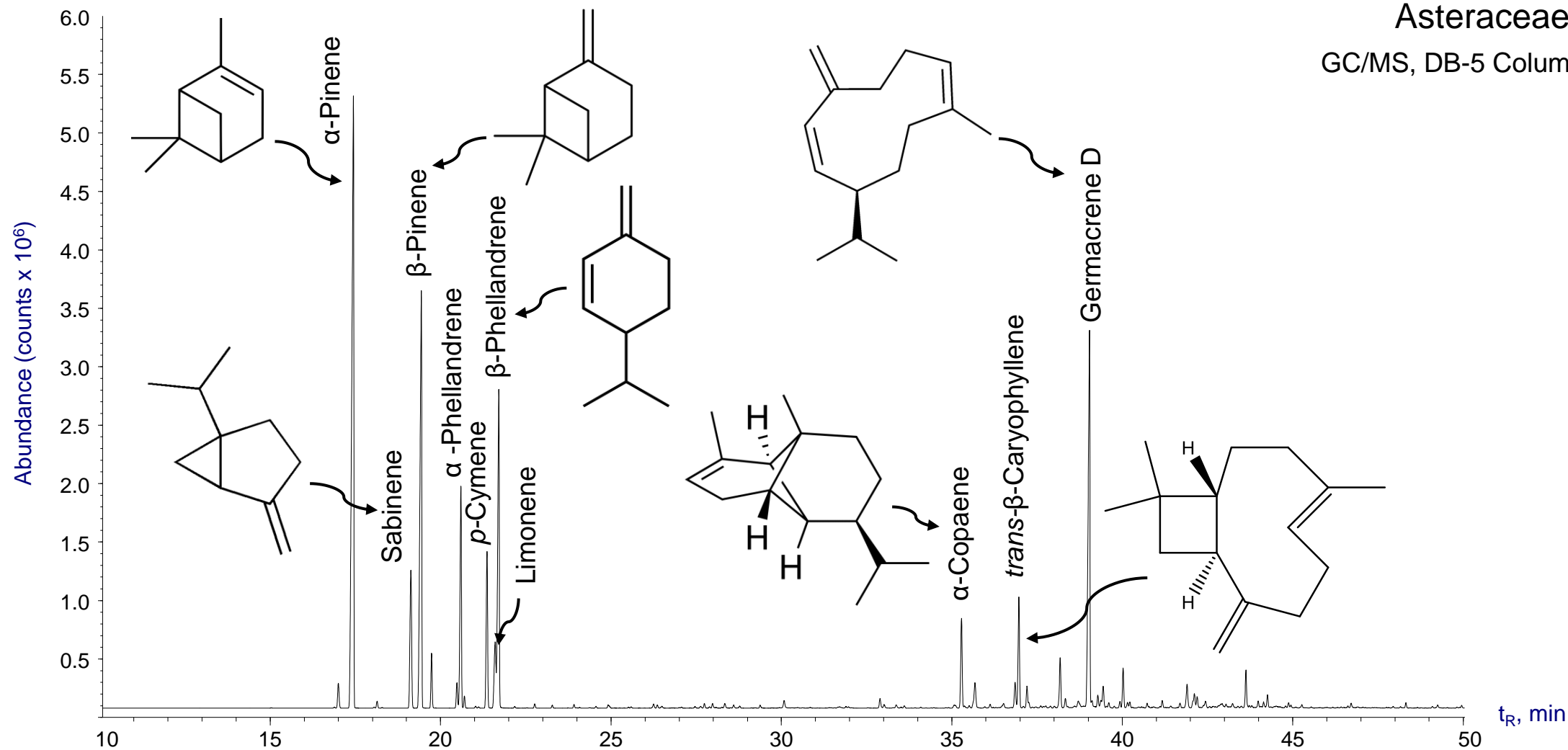
Figure S2.

Chromatographic profiles of essential oils distilled from 15 aromatic plants cultivated at the CENIVAM research centre (Industrial University of Santander, Bucaramanga, Colombia). GC/MS, electron ionization (EI, 70 eV). Split 30:1.

***Steiractinia aspera* Cuatrec [SA]**

Asteraceae family

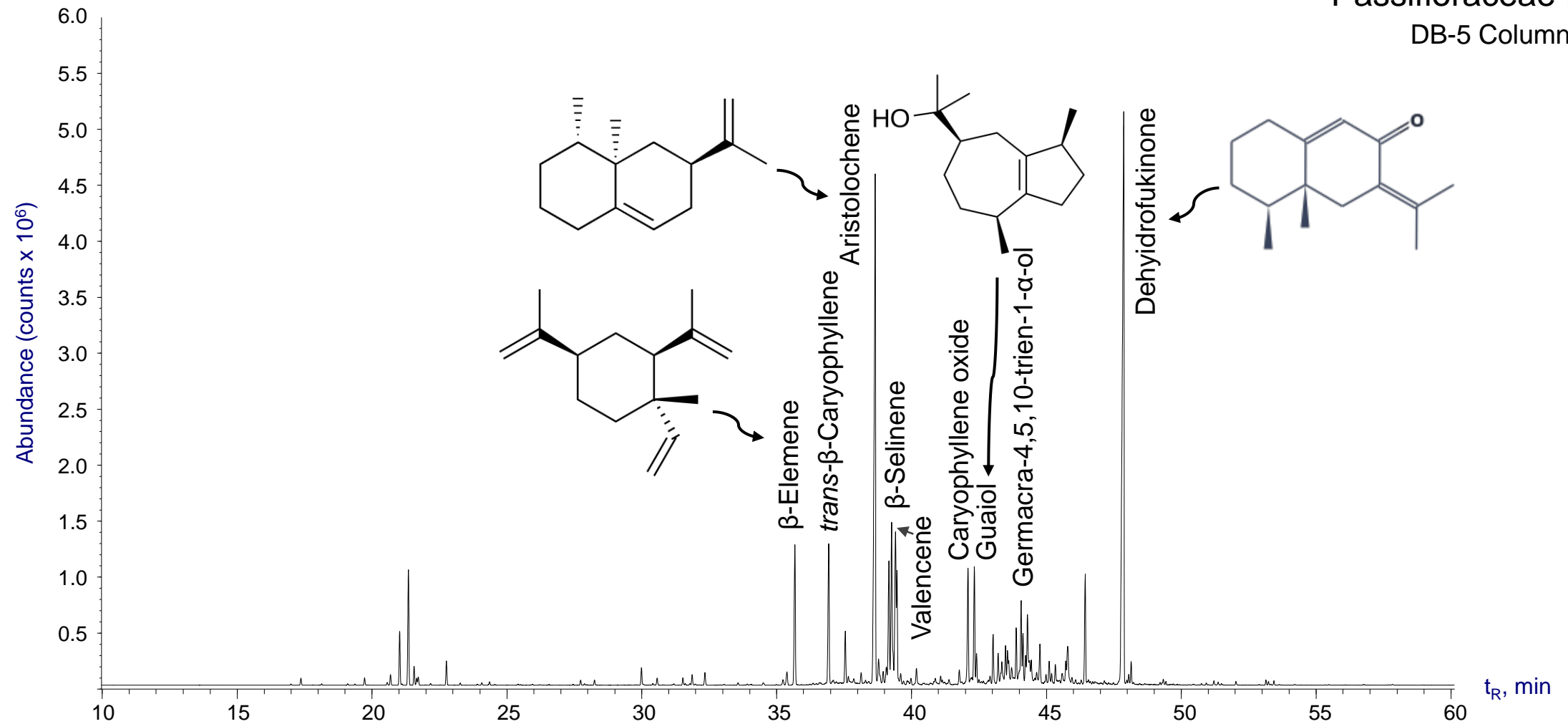
GC/MS, DB-5 Column (60 m)



Turnera diffusa Willd. ex Schult (Damiana) [TD]

Passifloraceae family

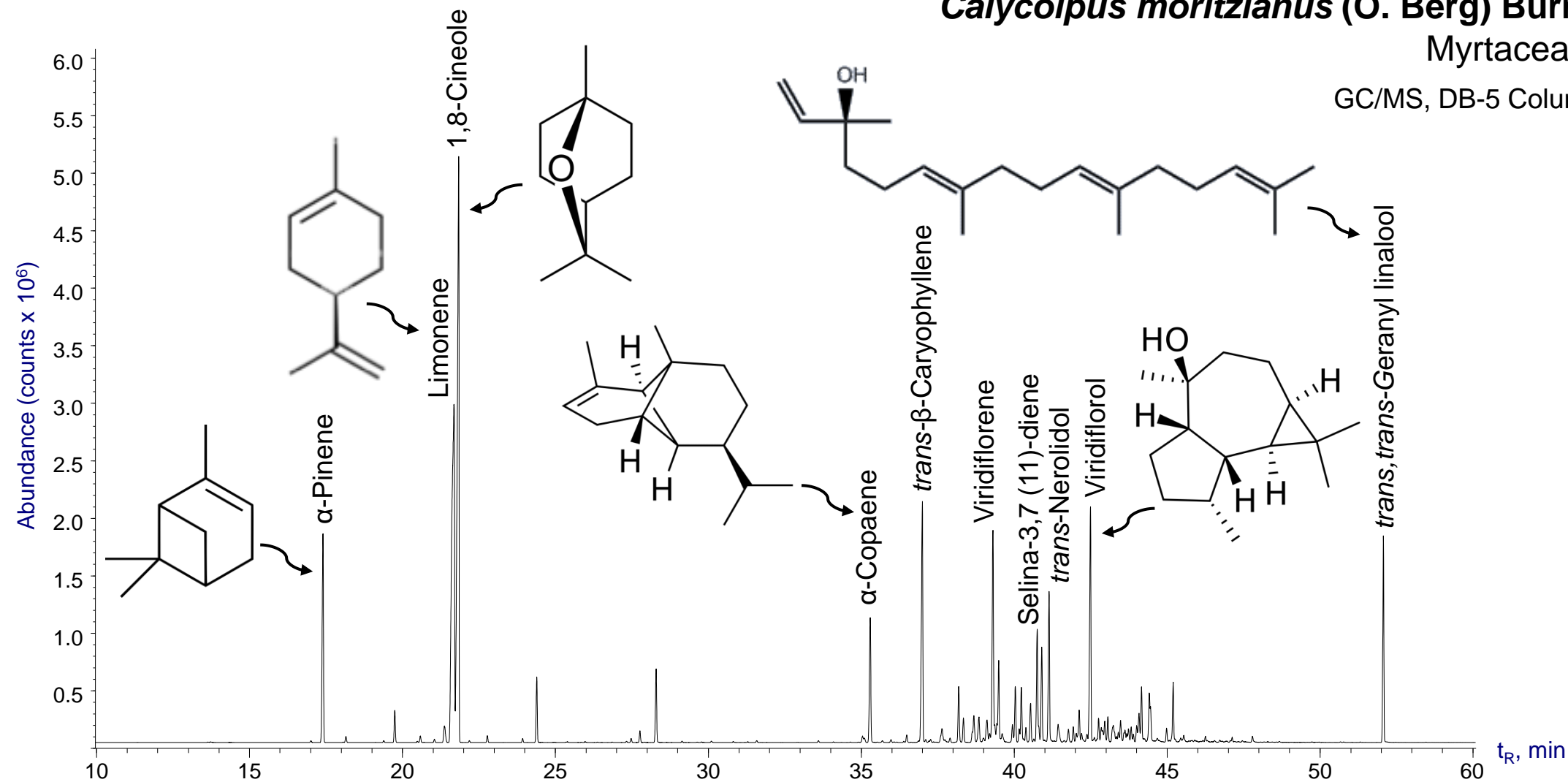
DB-5 Column (60 m)



***Calycolpus moritzianus* (O. Berg) Burret [CM]**

Myrtaceae family

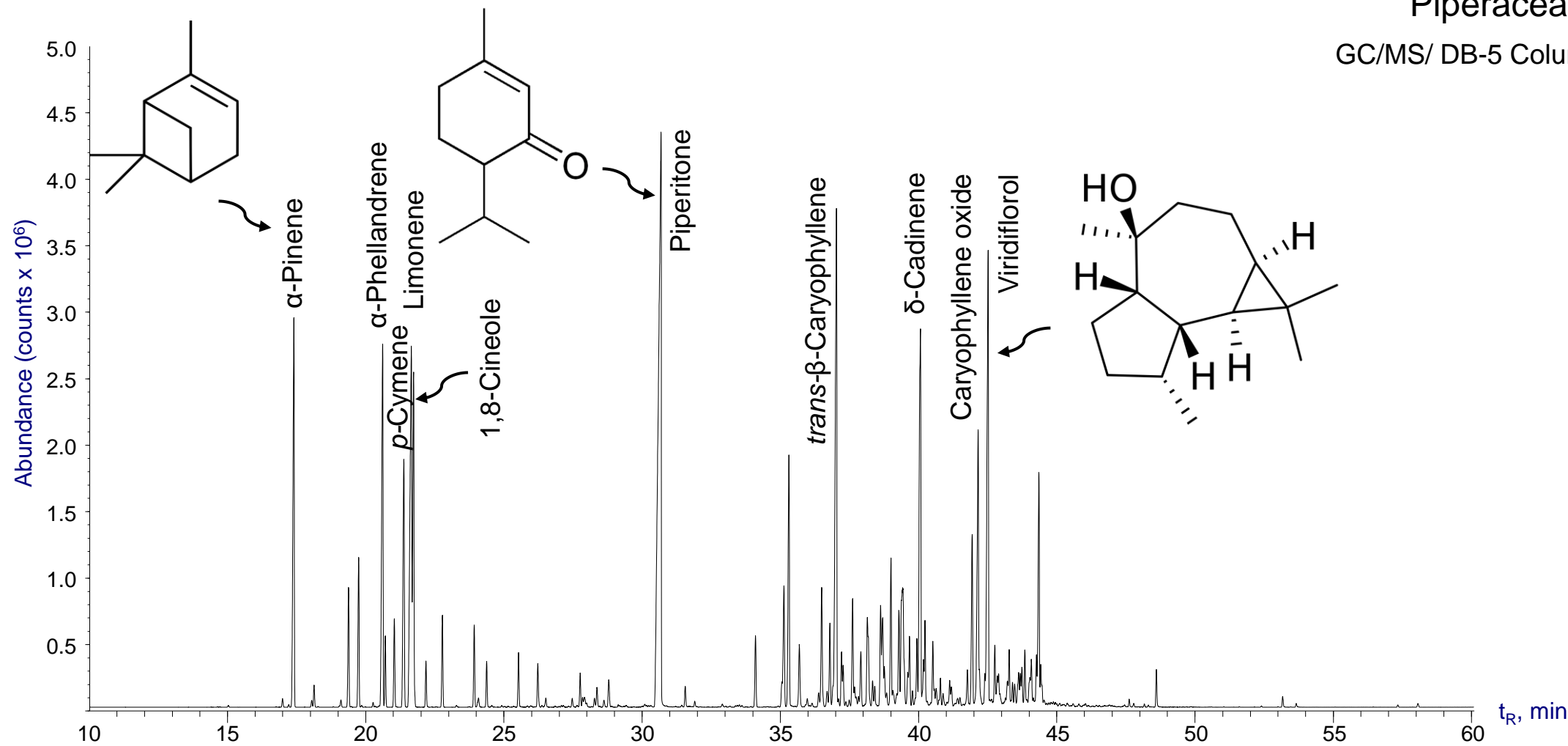
GC/MS, DB-5 Column (60 m)



***Piper aduncum* L. [PA]**

Piperaceae family

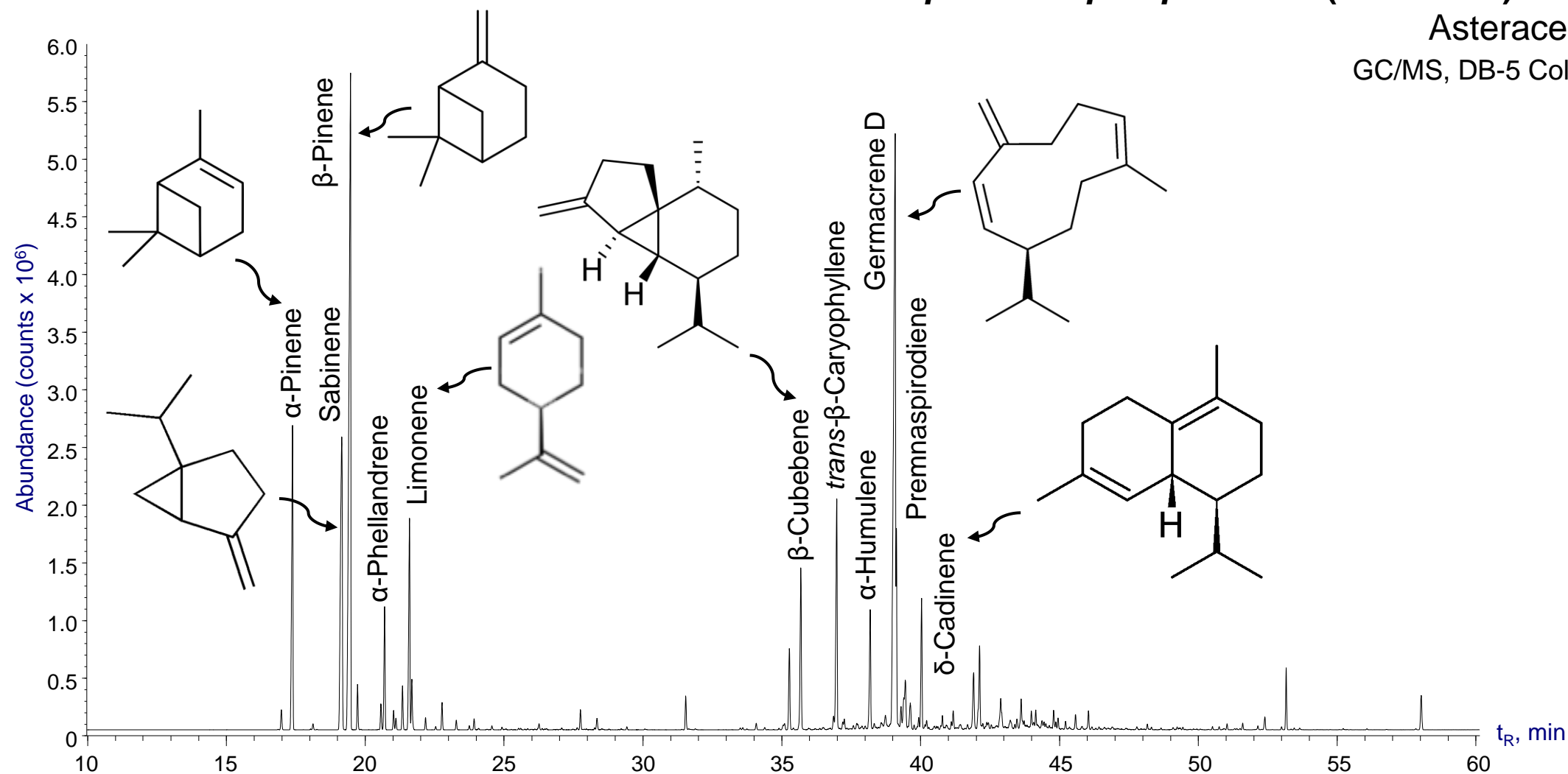
GC/MS/ DB-5 Column (60 m)



***Elaphandra quinquenervis* (S.F. Blake) H. Rob [EQ]**

Asteraceae family

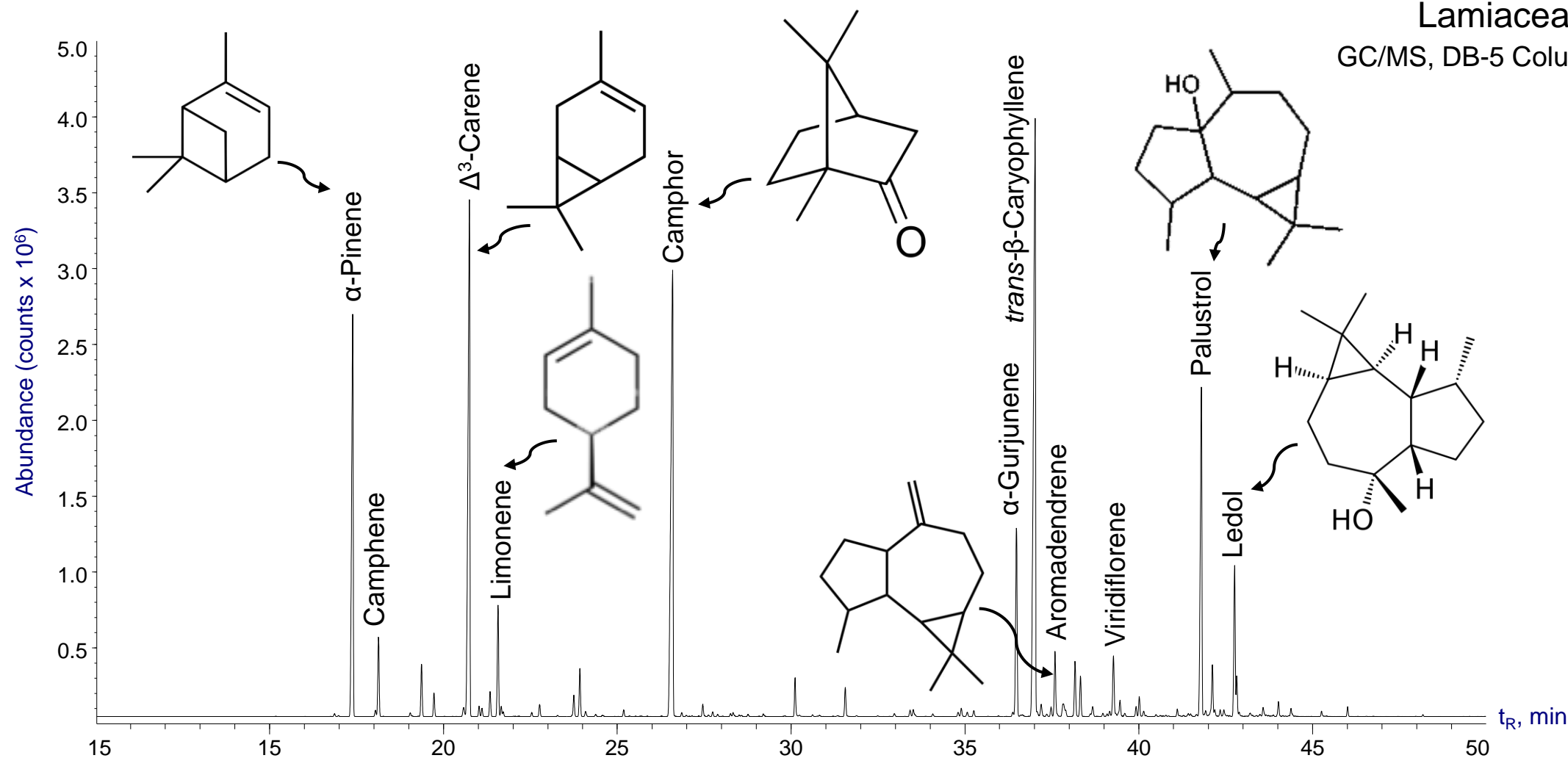
GC/MS, DB-5 Column (60 m)



***Hyptis dilatata* Benth [HD]**

Lamiaceae family

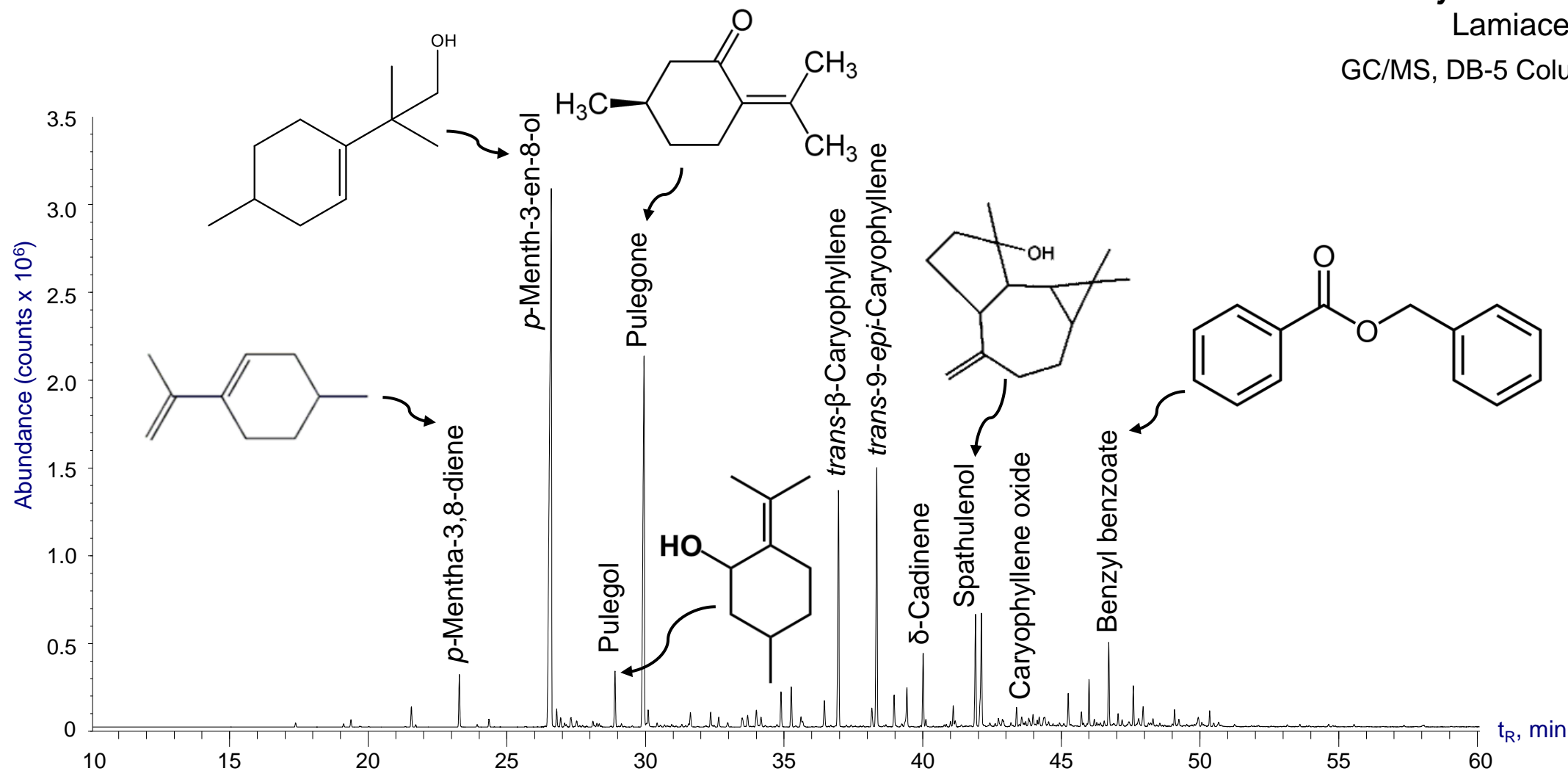
GC/MS, DB-5 Column (60 m)



Satureja viminea L. [SV]

Lamiaceae family

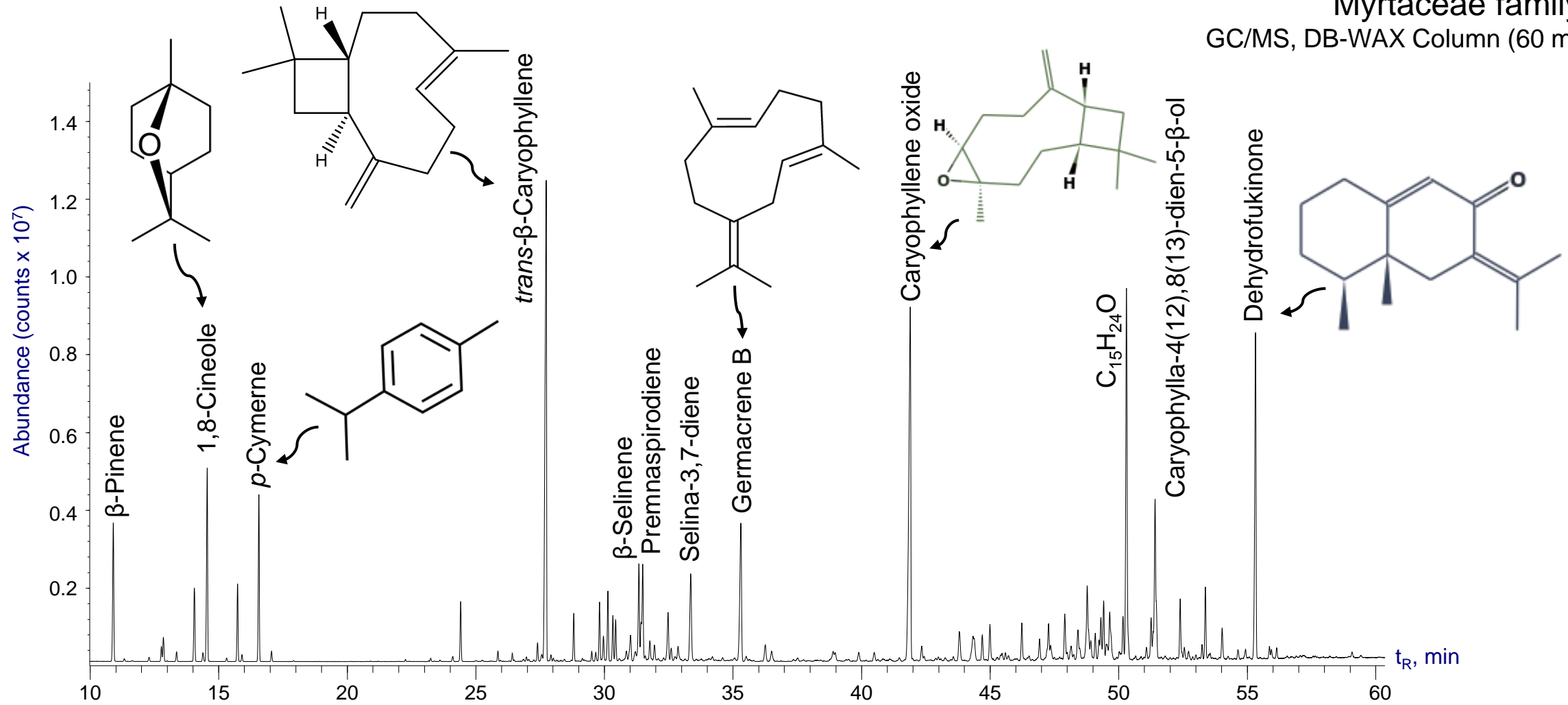
GC/MS, DB-5 Column (60 m)



***Psidium sartorianum* (O.Berg) Burret [PS]**

Myrtaceae family

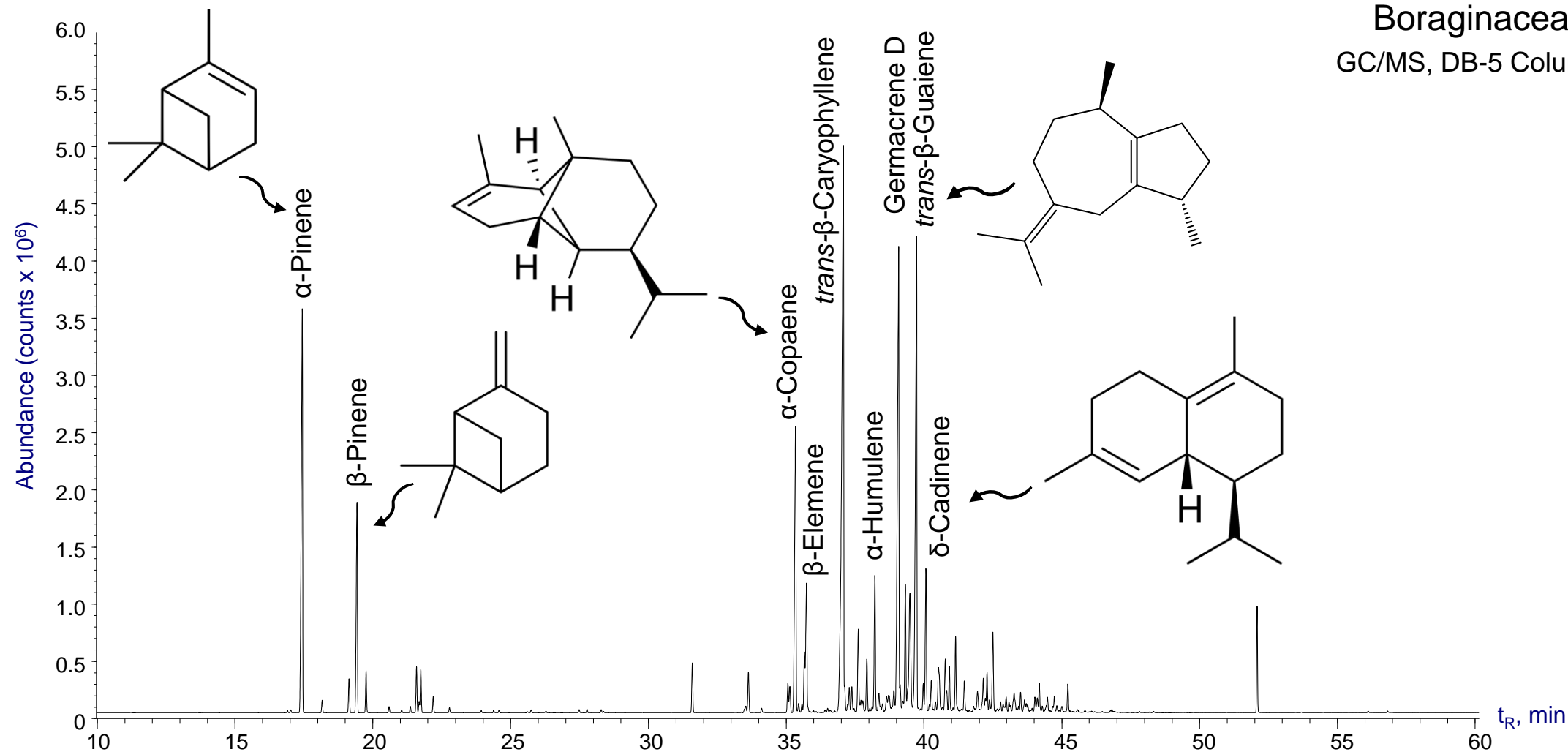
GC/MS, DB-WAX Column (60 m)



***Varronia curassavica* Jacq. [VC]**

Boraginaceae family

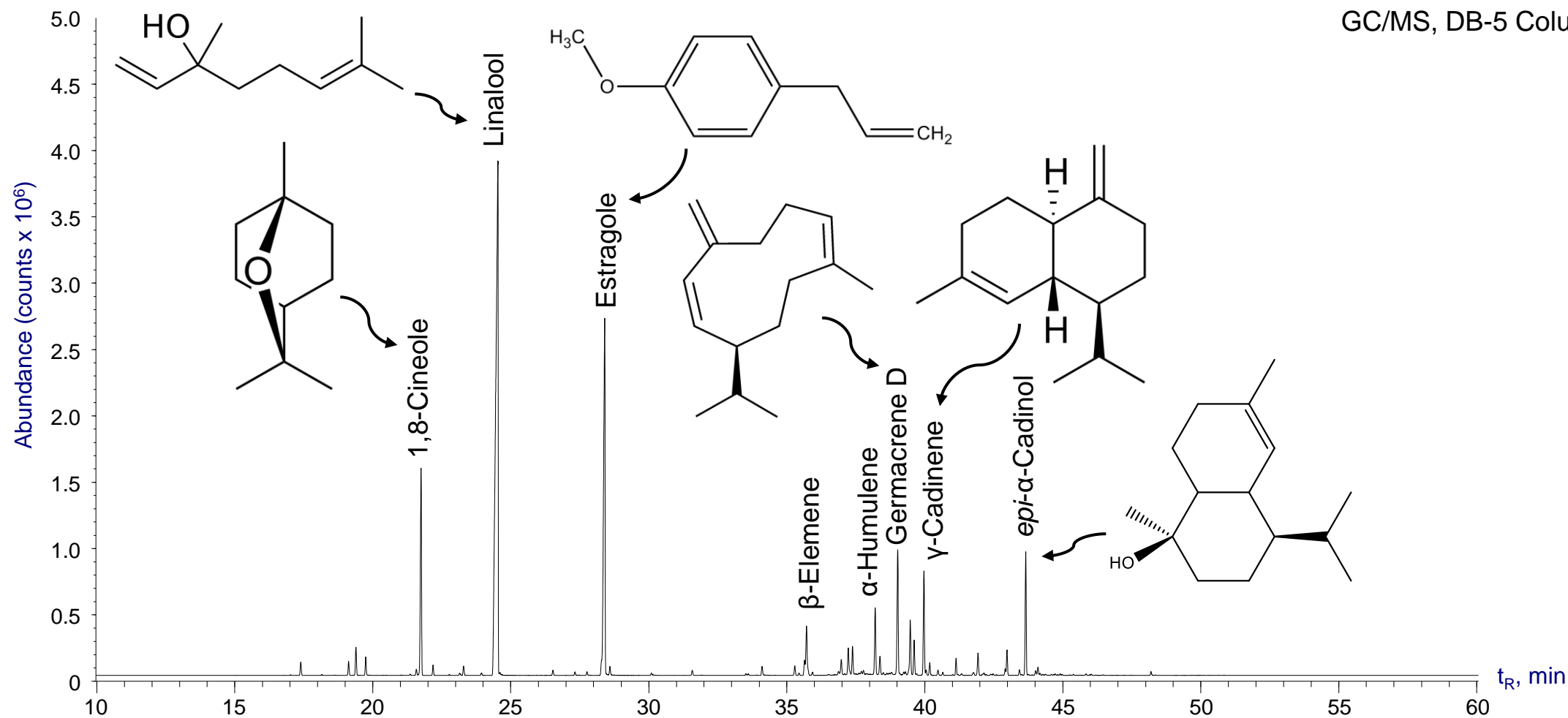
GC/MS, DB-5 Column (60 m)



***Ocimum basilicum* L. [OB]**

Lamiaceae family

GC/MS, DB-5 Column (60 m)

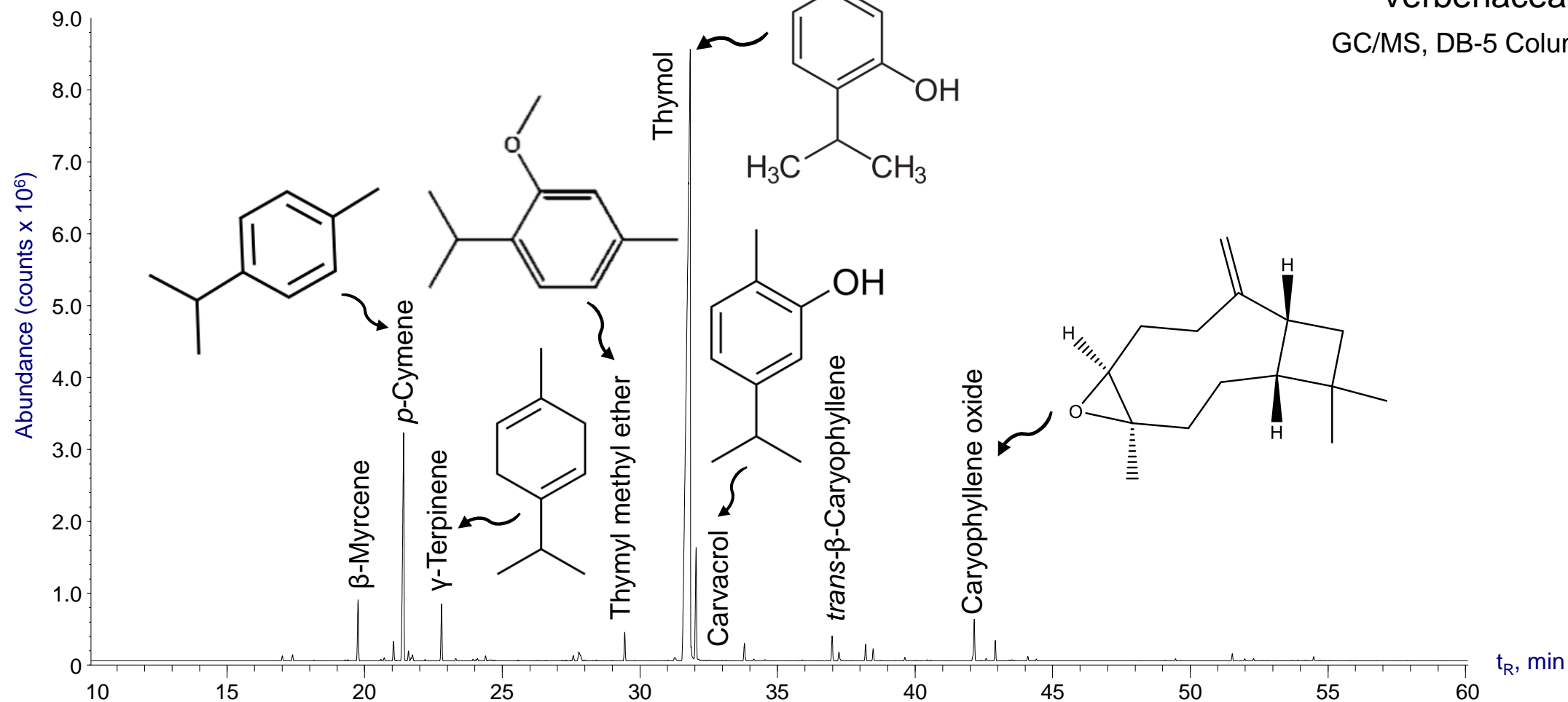


***Lippia origanoides* Kunth [LO]**

[Thymol chemotype]

Verbenaceae family

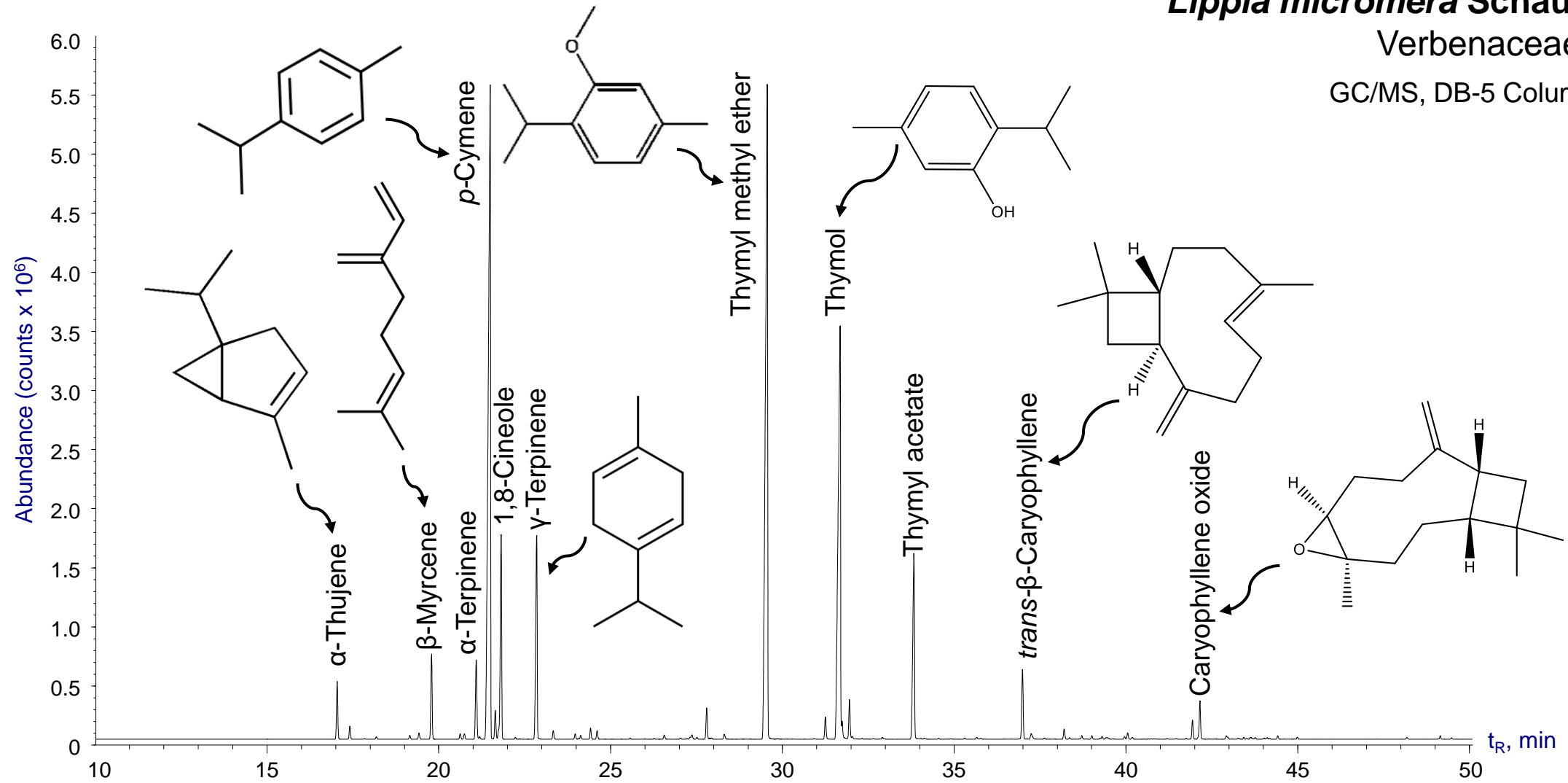
GC/MS, DB-5 Column (60 m)



***Lippia micromera* Schauer [LM]**

Verbenaceae family

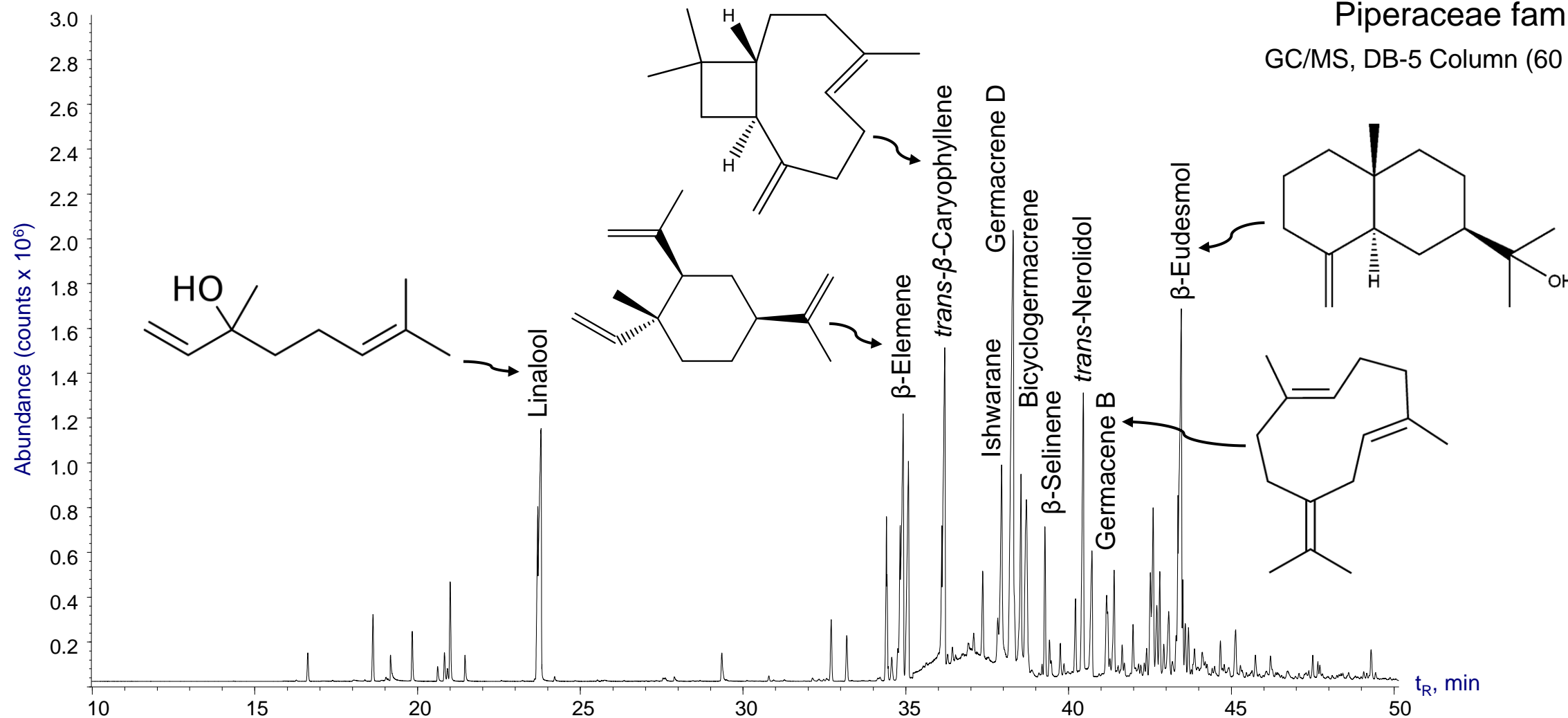
GC/MS, DB-5 Column (60 m)



***Piper reticulatum* L. [PR]**

Piperaceae family

GC/MS, DB-5 Column (60 m)

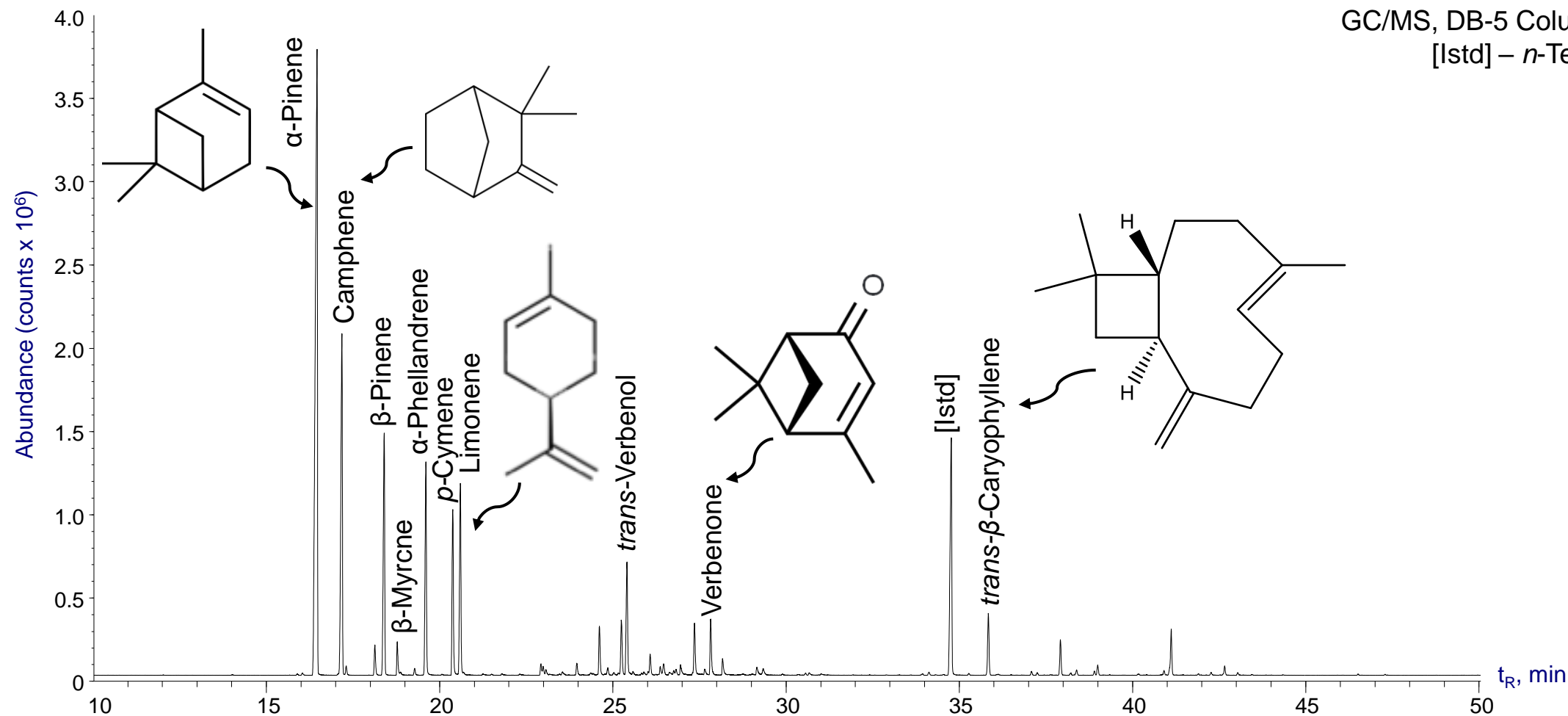


***Ageratina popayanensis* (Hieron.) R. King & H. Rob. [AP]**

Asteraceae family

GC/MS, DB-5 Column (60 m)

[Istd] – *n*-Tetradecane



***Ocimum campechianum* Mill. [OC]**

Lamiaceae family

GC/MS, DB-5 Column (60 m)

