

Supporting Information

Buckling behavior of few-layer graphene on soft substrate

Yancheng Meng*, Baowen Li, Luxian Li, and Jianqiang Zhang

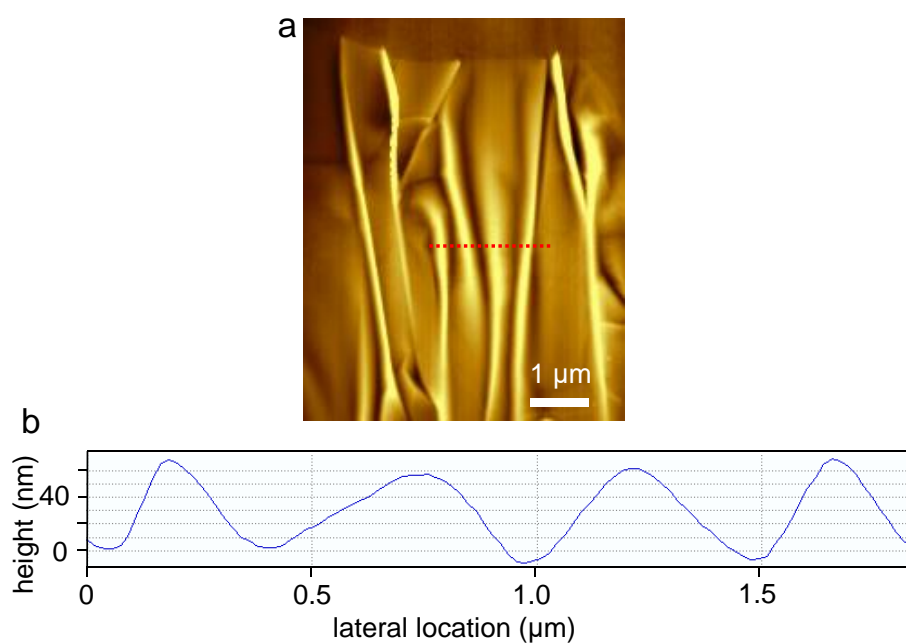


Figure S1. Buckling behavior of four-layer graphene. (a) Atomic force microscope (AFM) image, showing buckling behavior of four-layer graphene on PDMS film under 10% stretching. (b) Lateral line cut profiles of the buckling behavior in a, the location marked by red dotted line.