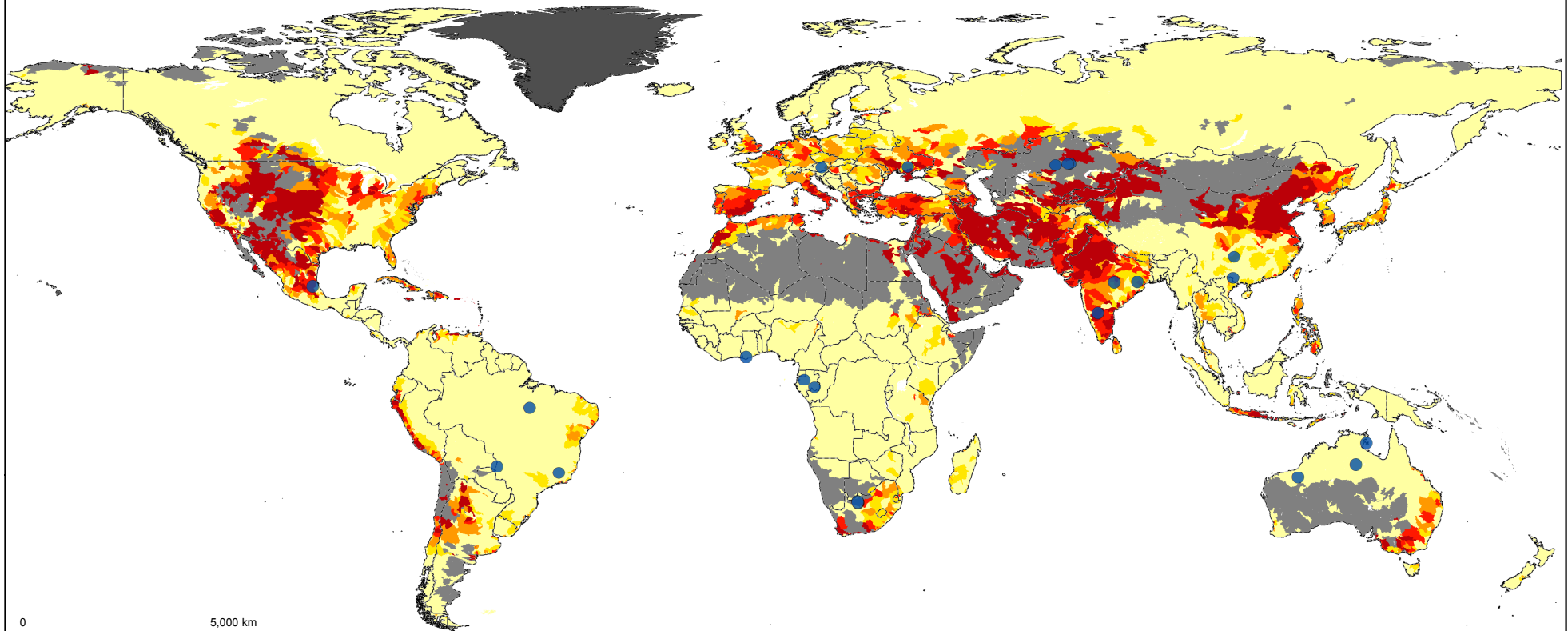


Manganese Mining Properties in relation to Baseline Water Stress



Locations of Mining Properties in 2018

- Manganese

Baseline Water Stress on Subbasin Level

- Low Stress (< 10 %)
- Low-Medium Stress (10 - 20 %)
- Medium-High Stress (20 - 40 %)
- High Stress (40 - 80 %)
- Extremely High Stress (> 80 %)
- Arid & Low Water Use
- No Data

Boundary Lines and Symbols

- International Boundaries

Data sources:

- Production data and coordinates obtained from SNL Metals & Mining Database (2019)
- Baseline water stress sourced from Gassert et al. (2014)
- Cartography and design by Meißner (2021)