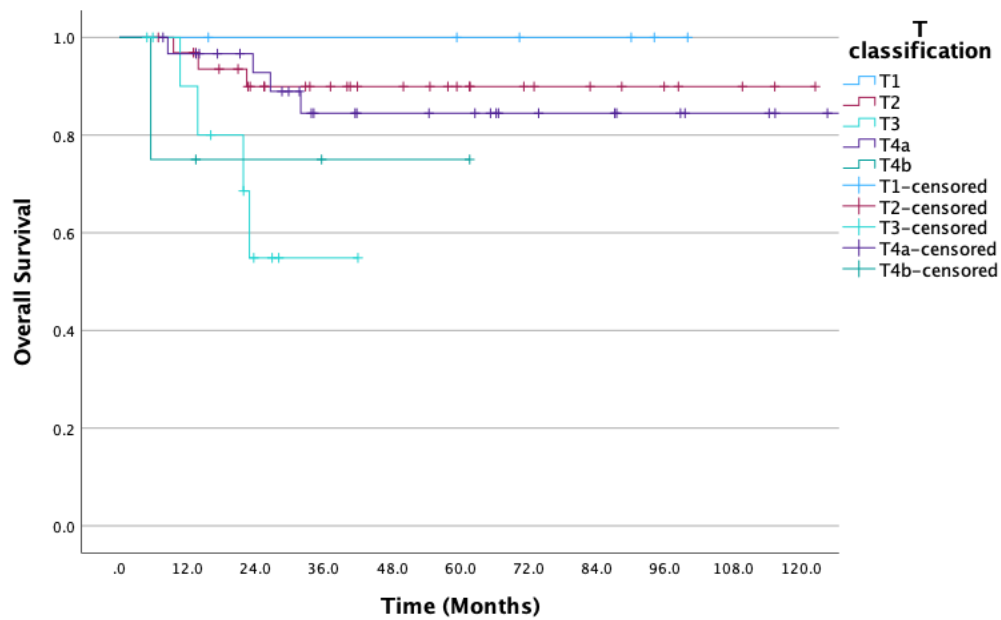
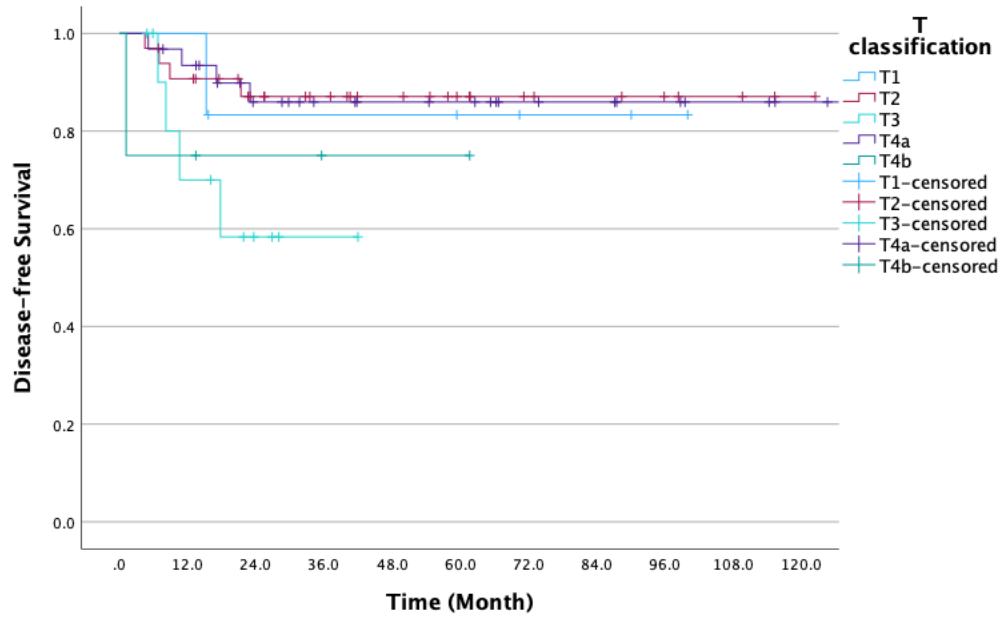


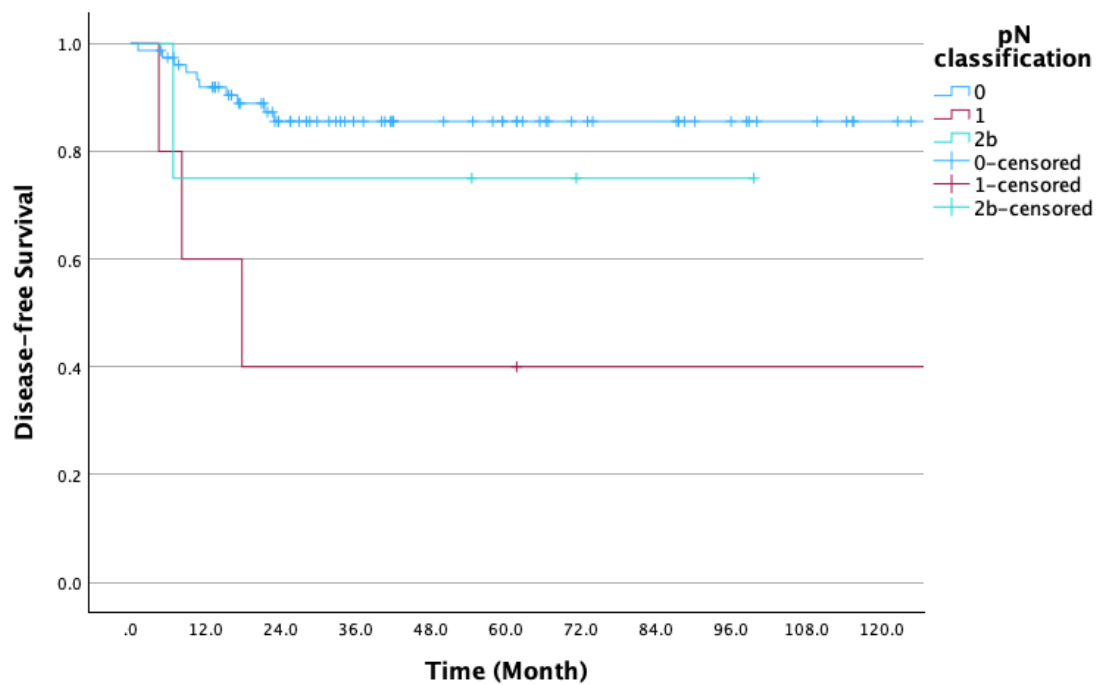
**Supplementary Figure S1.** Lymphocyte with occult metastasis. The area under the receiver operating characteristic (ROC) curve was 0.677 with the 95% confidence index (CI) of 0.515-0.839 ( $P=0.032$ ).



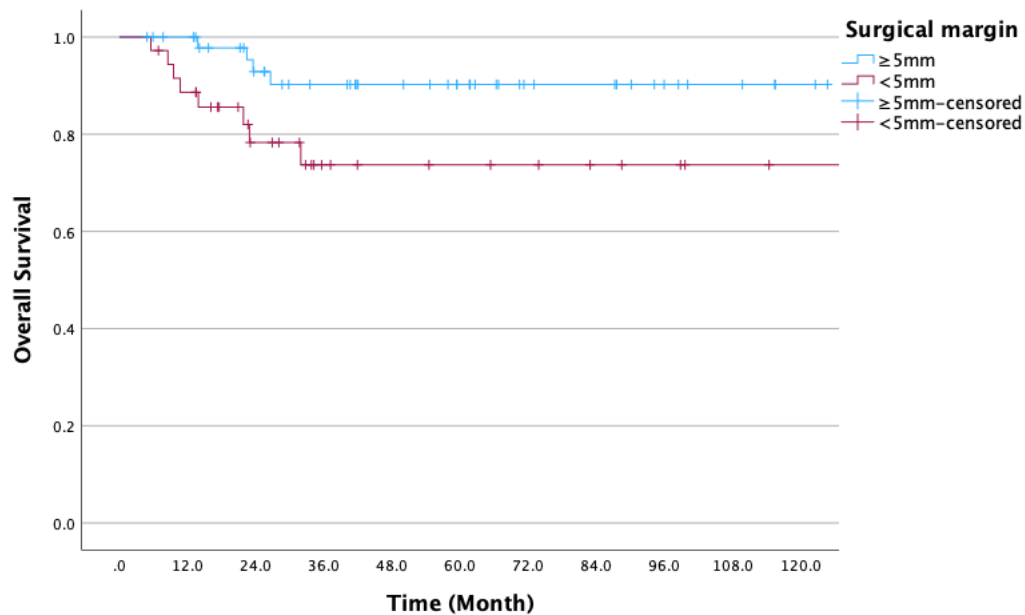
**Supplementary Figure S2.** Overall survival rate according to the T classification. There was a significant difference in T classification ( $P=0.045$ ).



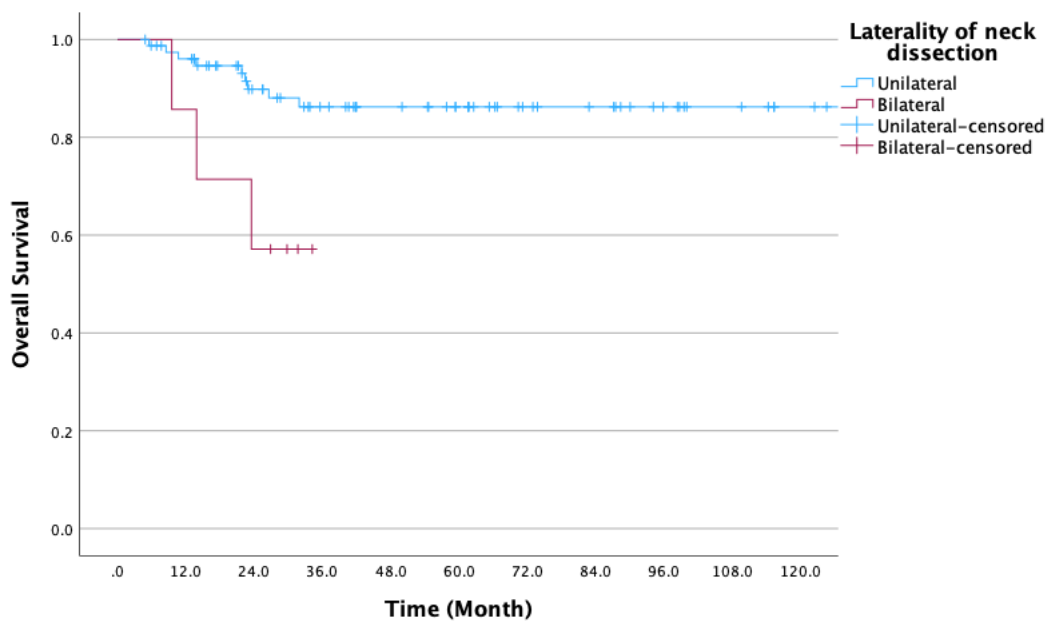
**Supplementary Figure S3.** Disease-free survival rate according to the T classification. There was no significant difference in the T classification.



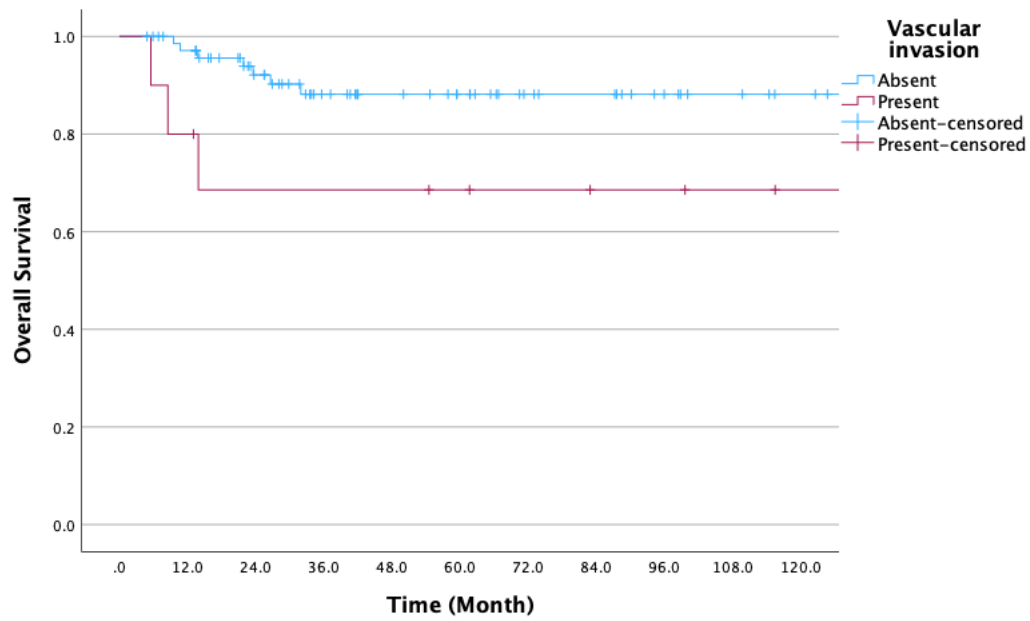
**Supplementary Figure S4.** Disease-free survival rate according to the pN classification. There was a significant difference in the pN classification ( $P=0.009$ ).



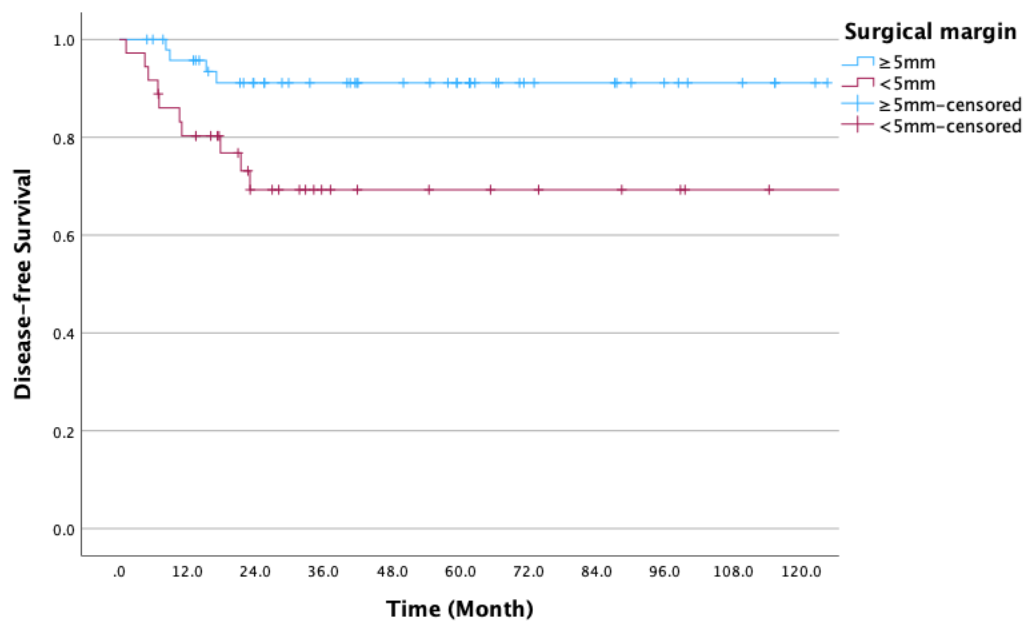
**Supplementary Figure S5.** Overall survival rate according to the surgical margin. There was a significant difference in surgical margin between  $\geq 5\text{mm}$  and  $< 5\text{mm}$  ( $P=0.043$ ).



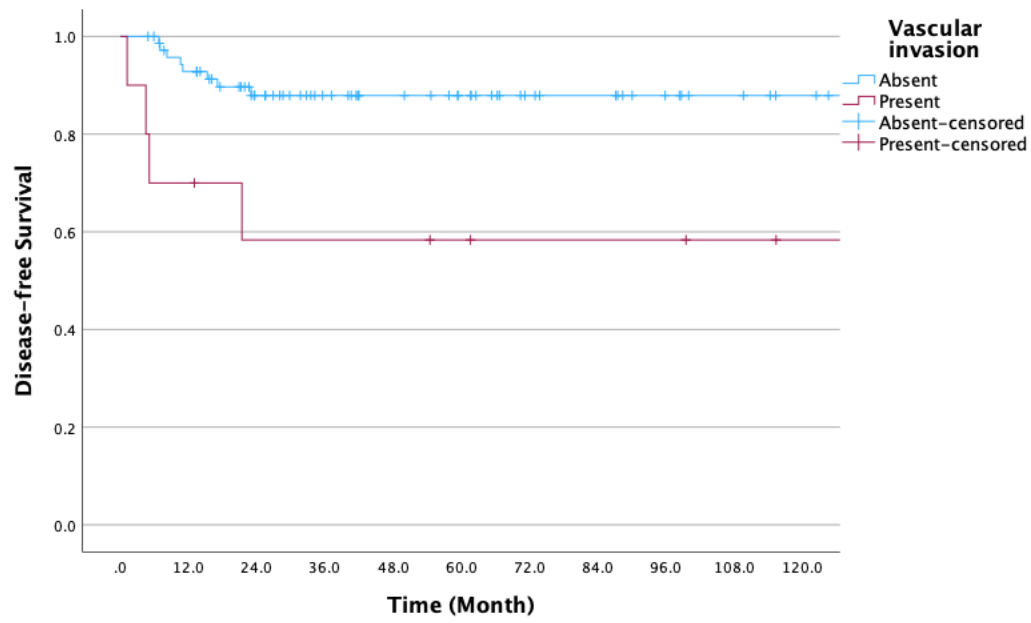
**Supplementary Figure S6.** Overall survival rate according to the laterality of neck dissection. There was a significant difference in the laterality of neck dissection between unilateral and bilateral ( $P=0.023$ ).



**Supplementary Figure S7.** Overall survival rate according to the vascular invasion. There was a significant difference in the vascular invasion between absent and present ( $P=0.049$ ).



**Supplementary Figure S8.** Disease-free survival rate according to the surgical margin. There was a significant difference in the surgical margin between  $\geq 5\text{mm}$  and  $< 5\text{mm}$  ( $P=0.013$ ).



**Supplementary Figure S9.** Disease-free survival rate according to the vascular invasion. There was a significant difference in the vascular invasion between absent and present ( $P=0.006$ ).