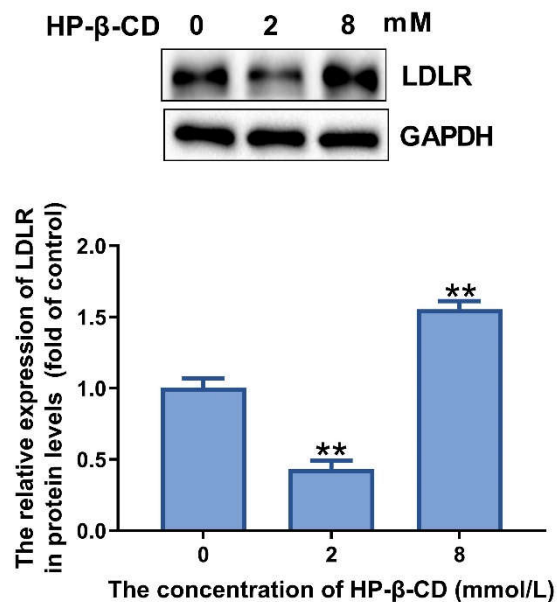


**Figure S1.** The effect of different concentrations of HP- $\beta$ -CD for the cholesterol intake in MDA-MB-231 cells. (A) MDA-MB-231 cells were treated with or without 5 mmol/L HP- $\beta$ -CD. Expression level of LDLR. (B) MDA-MB-231 cells were treated with various concentrations of HP- $\beta$ -CD (0, 0.6, 0.8 mmol/L). Expression level of LDLR. Data are presented as the mean  $\pm$  SD (n=3). \*\*P < 0.01 versus the control group.



**Figure S2.** The effect of different concentrations of HP- $\beta$ -CD for the cholesterol intake in BT-549 cells. BT-549 cells were treated with various concentrations of HP- $\beta$ -CD (0, 2, 8 mmol/L). Expression level of LDLR. Data are presented as the mean  $\pm$  SD (n=3). \*\*P < 0.01 versus the control group.