

Supplementary Information

Deciphering gut microbiome responses upon microplastic exposure via integrating metagenomics and activity-based metabolomics

Pengcheng Tu^{a,1}, Jingchuan Xue^{b,1}, Huixia Niu^{a,e}, Qiong Tang^c, Zhe Mo^a, Xiaodong Zheng^d, Lizhi Wu^a, Zhijian Chen^a, Yanpeng Cai^b, and Xiaofeng Wang^{a,*}

^a Department of Environmental Health, Zhejiang Provincial Center for Disease Control and Prevention, 3399 Binsheng Road, Hangzhou, 310051 China.

^b Guangdong Provincial Key Laboratory of Water Quality Improvement and Ecological Restoration for Watersheds, Institute of Environmental and Ecological Engineering, Guangdong University of Technology, Guangzhou, 510006 China.

^c College of Standardization, China Jiliang University, Hangzhou, 310018 China.

^d Department of Food Science and Nutrition, Zhejiang University, Hangzhou, 310058 China.

^e School of Medicine, Ningbo University, Ningbo, 315000 China.

¹ Pengcheng Tu and Jingchuan Xue equally contributed to this work.

* Correspondence: xfwang@cdc.zj.cn

Figure. S1 Metabolic impact of MP exposure. (A) Body weight curve. (B) Total weight gain. (C) Food intake. Organ indices of liver (D), kidney (D), and cecum (F). Student's t-test, $p < 0.05$ was considered statistically significant.

Figure. S2 KEGG enrichment analysis of differential metabolites.

Figure. S3 Wilcoxonrank-sum test on phenotype.

Figure. S4 Alterations in metabolites that are related to ABC transporters.

Figure S1

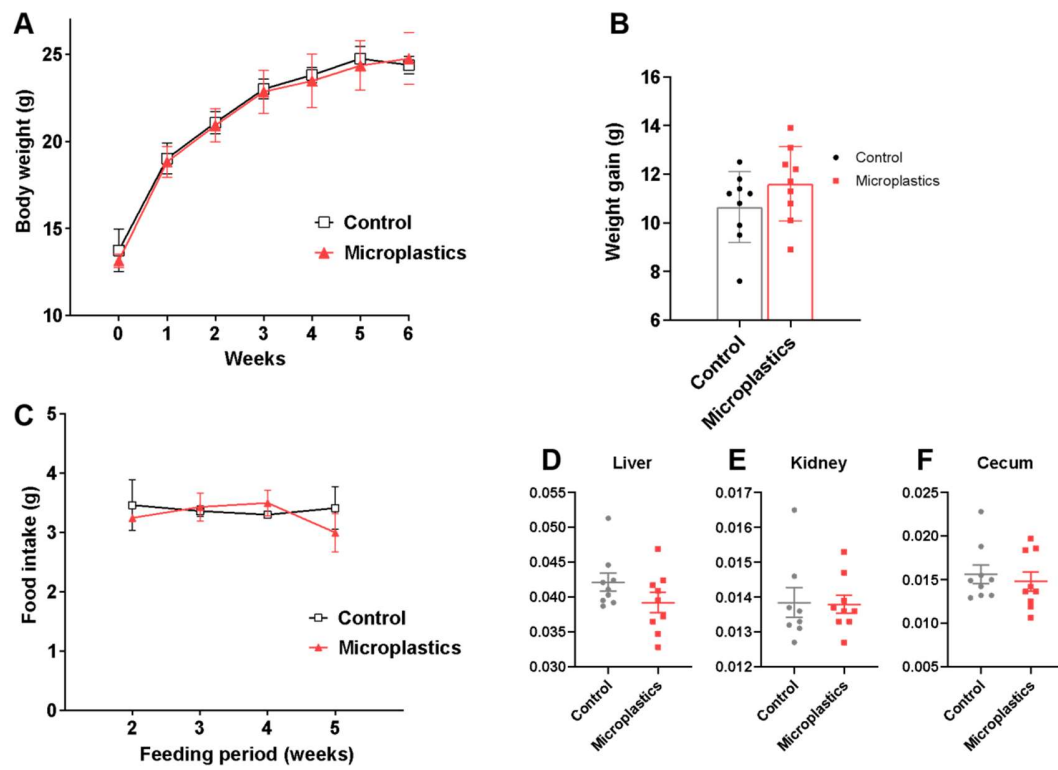


Figure S2

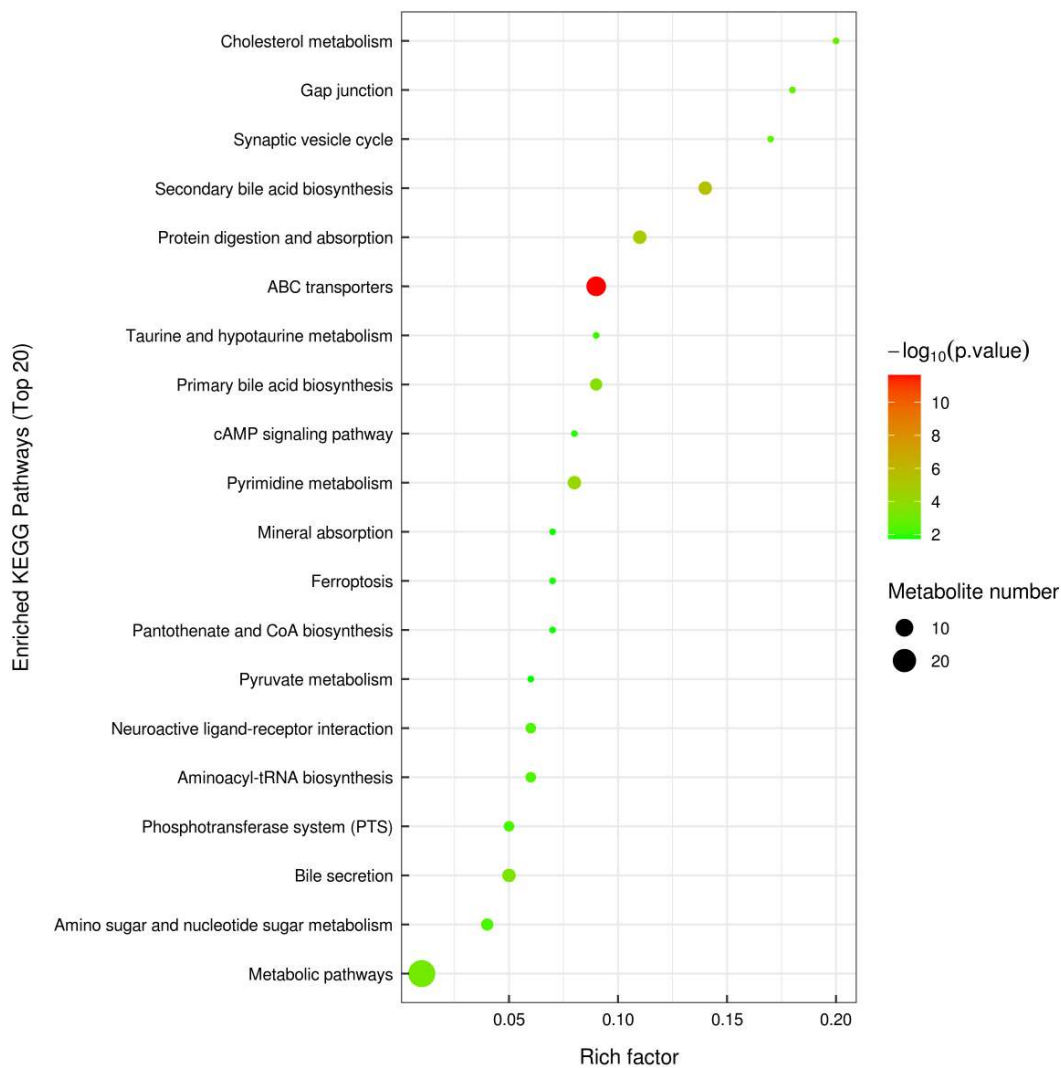


Figure S3

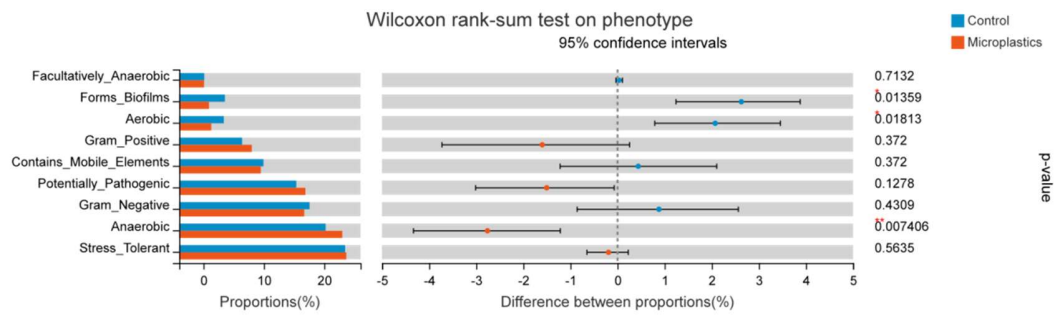


Figure S4

