

## *Supplementary Materials*

### **Inter-laboratory comparison of metabolite measurements for metabolomics data integration**

Yoshihiro Izumi<sup>1</sup>, Fumio Matsuda<sup>2,\*</sup>, Akiyoshi Hirayama<sup>3</sup>, Kazutaka Ikeda<sup>4</sup>, Yoshihiro Kita<sup>5</sup>, Kanta Horie<sup>6</sup>, Daisuke Saigusa<sup>7</sup>, Kosuke Saito<sup>8</sup>, Yuji Sawada<sup>9</sup>, Hiroki Nakanishi<sup>10</sup>, Nobuyuki Okahashi<sup>2</sup>, Masatomo Takahashi<sup>1</sup>, Motonao Nakao<sup>1</sup>, Kosuke Hata<sup>1</sup>, Yutaro Hoshi<sup>11</sup>, Motohiko Morihara<sup>12</sup>, Kazuhiro Tanabe<sup>13</sup>, Takeshi Bamba<sup>1,\*</sup>, and Yoshiya Oda<sup>5</sup>

<sup>1</sup> Division of Metabolomics, Medical Institute of Bioregulation, Kyushu University, 3-1-1 Maidashi, Higashi-ku, Fukuoka 812-8582, Japan

<sup>2</sup> Department of Bioinformatic Engineering, Graduate School of Information Science and Technology, Osaka University, 1-5 Yamadaoka, Suita, Osaka 565-0871, Japan

<sup>3</sup> Institute for Advanced Biosciences, Keio University, 246-2 Mizukami, Kakuganji, Tsuruoka, Yamagata 997-0052, Japan

<sup>4</sup> Laboratory for Metabolomics, RIKEN Center for Integrative Medical Sciences, 1-7-22 Suehiro-cho, Tsurumi-Ku, Yokohama, Kanagawa, 230-0045, Japan

<sup>5</sup> Department of Lipidomics, Graduate School of Medicine, The University of Tokyo, 7-3-1 Hongo, Bunkyo-ku, Tokyo 113-0033, Japan

<sup>6</sup> Translational Science, Neurology Business Group, Eisai Co., Ltd., 5-1-3 Tokodai, Tsukuba, Ibaraki 300-2635, Japan

<sup>7</sup> Tohoku Medical Megabank Organization, Tohoku University, 2-1 Seiryomachi, Aoba-ku, Sendai, Miyagi 980-8573, Japan

<sup>8</sup> Division of Medical Safety Science, National Institute of Health Science, 3-25-26 Tonomachi, Kawasaki-ku, Kawasaki, Kanagawa, 210-9501, Japan

<sup>9</sup> RIKEN Center for Sustainable Resource Science, 1-7-22 Suehiro-cho, Tsurumi-ku, Yokohama, Kanagawa 230-0045, Japan

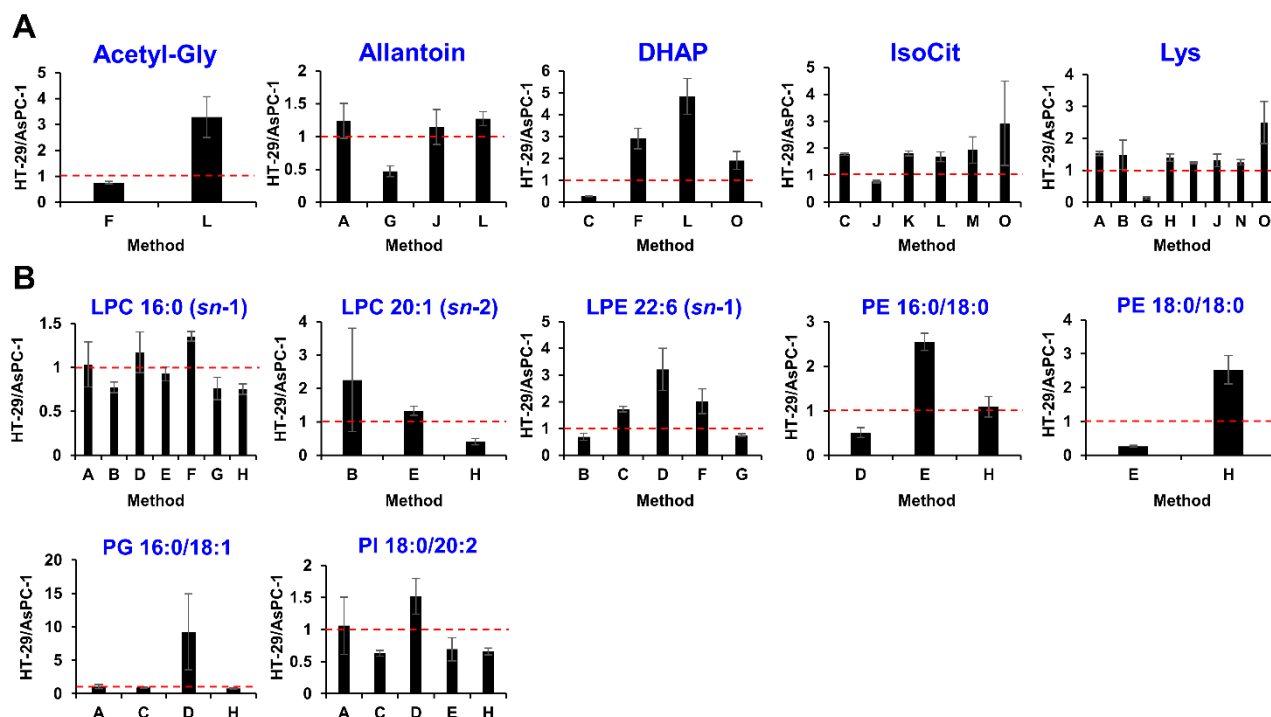
<sup>10</sup> Research Center for Biosignal, Akita University, 1-1-1 Hondo, Akita-city, Akita 010-8543, Japan

<sup>11</sup> Pharmacokinetic Research Laboratories, Ono Pharmaceutical Co., Ltd., 17-2 Wadai, Tsukuba, Ibaraki 300-4247, Japan

<sup>12</sup> Translational Research Laboratories, Ono Pharmaceutical Co., Ltd., 3-1-1 Sakurai Shimamoto-cho, Mishima-gun, Osaka 618-8585, Japan

<sup>13</sup> Medical Solution Promotion Department, Medical Solution Segment, LSI Medience Corporation, 3-30-1, Shimura, Itabashi-ku, Tokyo 174-8555, Japan

**\* Correspondence:** [fmatsuda@ist.osaka-u.ac.jp](mailto:fmatsuda@ist.osaka-u.ac.jp) (F.M.); [bamba@bioreg.kyushu-u.ac.jp](mailto:bamba@bioreg.kyushu-u.ac.jp) (T.B.); Tel.: +81-66-879-7433 (F.M.); +81-92-642-6171 (T.B.)



**Figure S1.** Incomparable relative quantitative values produced from multiple methods. HT-29/AsPc-1 levels of five hydrophilic metabolites (A) and seven hydrophobic metabolites (B) were changed to distinct directions among multiple methods based on two-sided Student's *t*-test ( $\alpha = 0.05$ ) and a relative quantitative value of 1.