

Supplementary information C. Supplementary results of the chemical analyses of the SR-BC and SR-SC samples

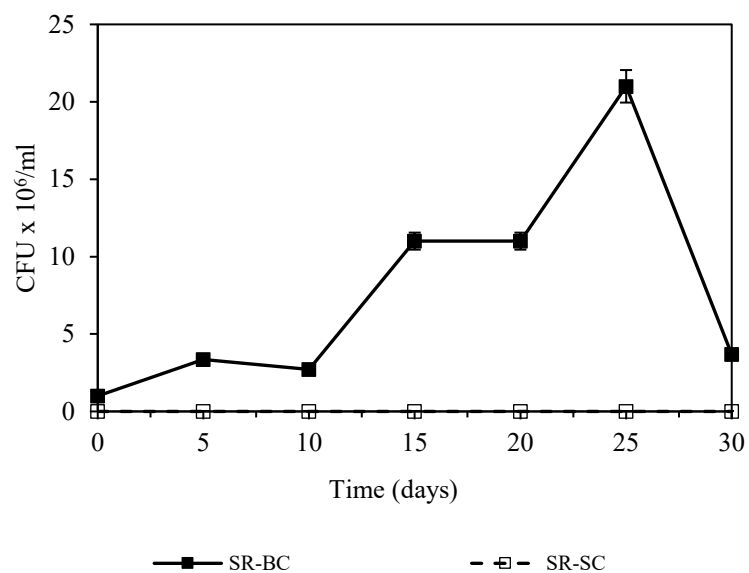


Figure S13. Growth curve of LM27 strain cultured on mineral medium with SR (SR-BC)

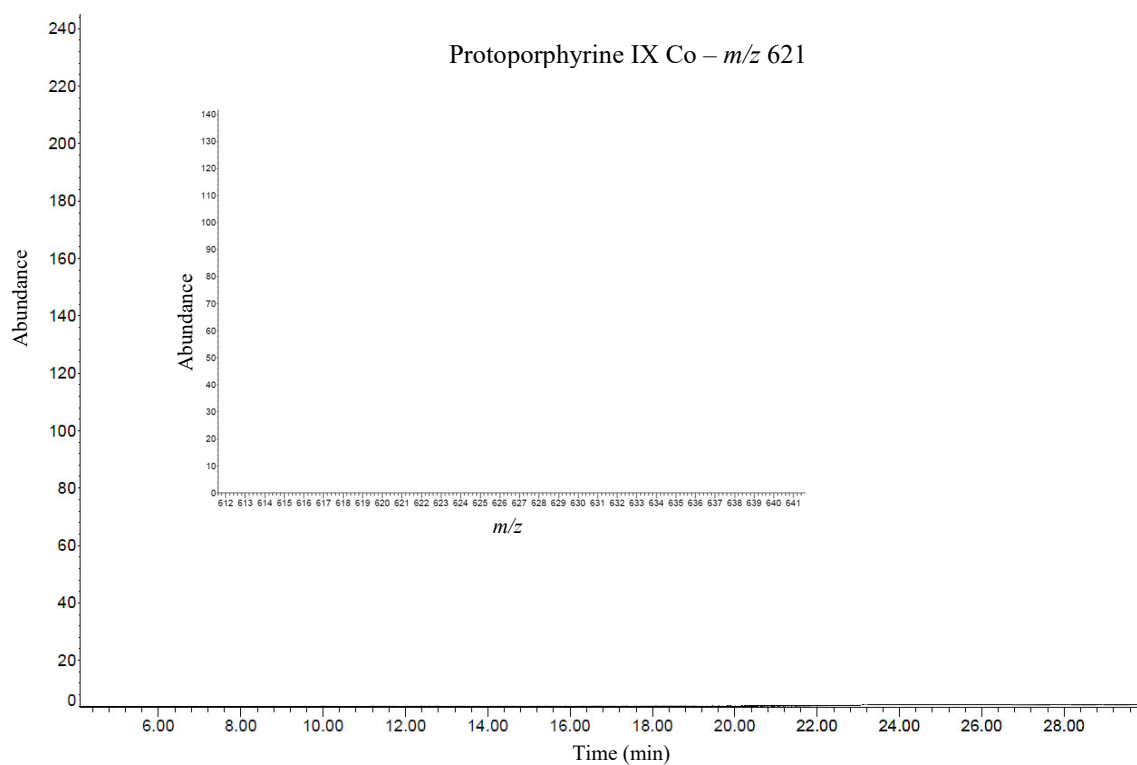


Figure S14. SIM chromatogram and mass spectrum (inset) of chloroform extract of the supernatant of SR-BC. SIM chromatogram of CoPPIX is presented in Figure S1 (Supplementary information A).

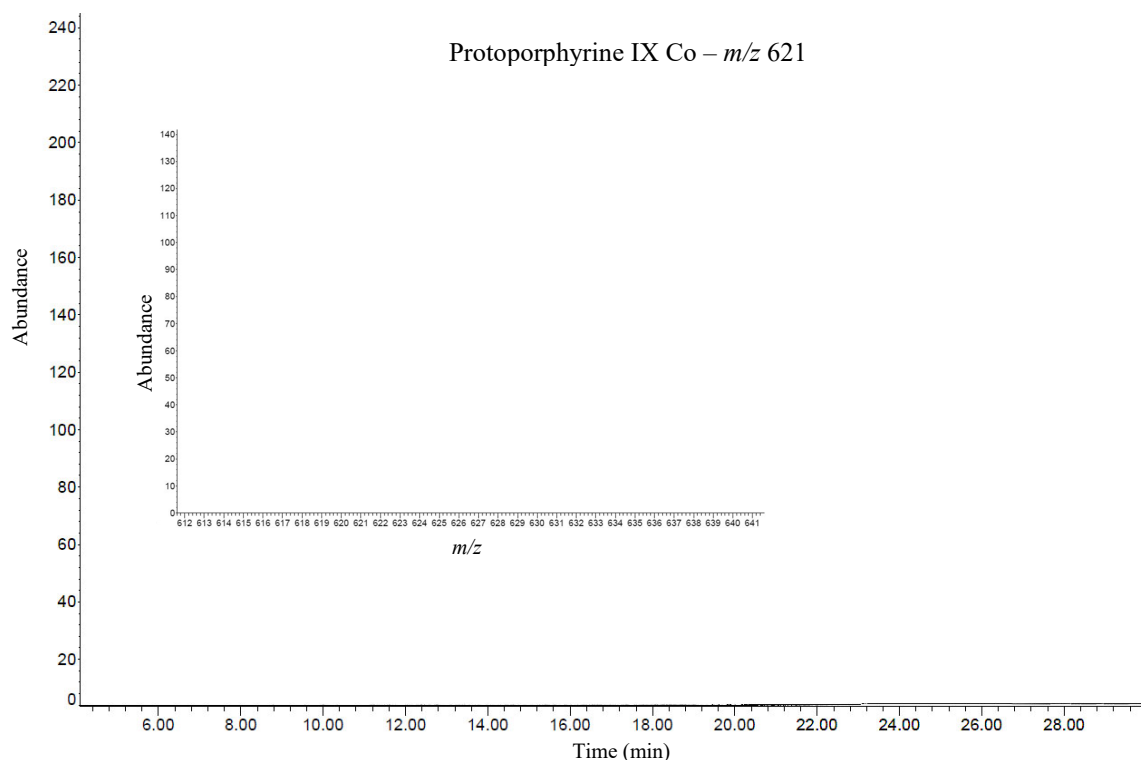


Figure S15. SIM chromatogram and mass spectrum (inset) of dichloromethane:methanol extract of the sediment of SR-BC. SIM chromatogram of CoPPIX is presented in Figure S1 (Supplementary information A)

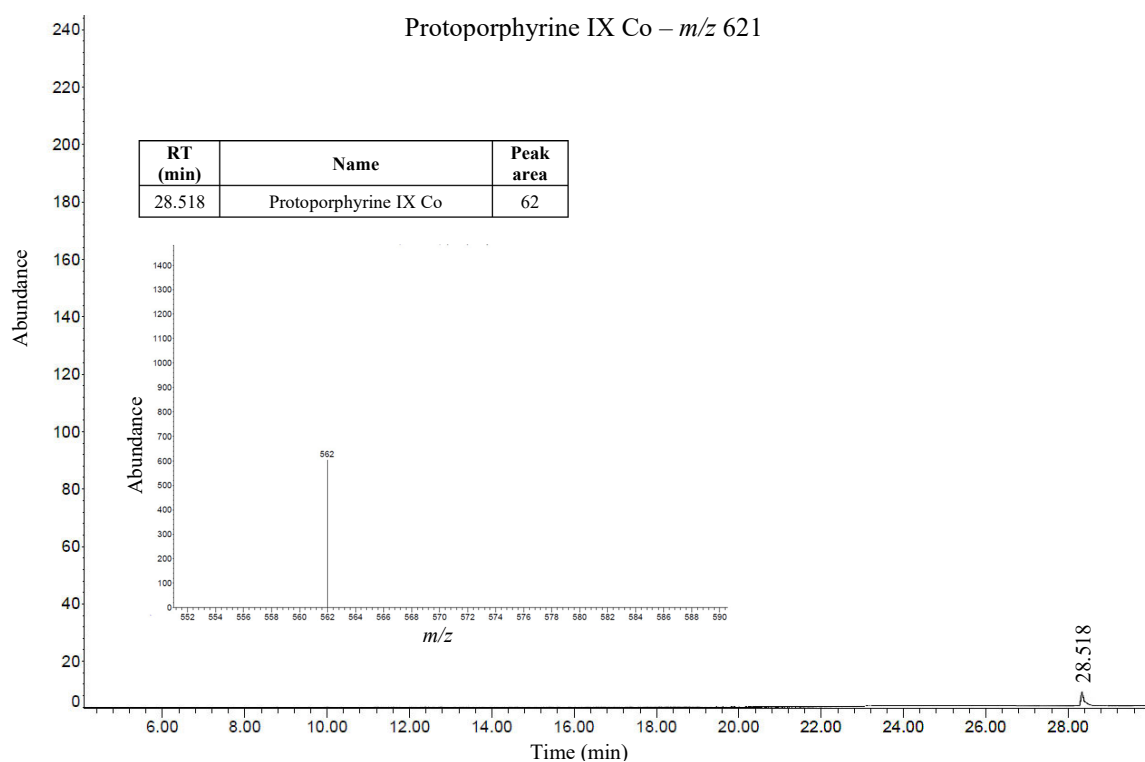


Figure S16. SIM chromatogram and mass spectrum (inset) of chloroform extract of the supernatant of SR-SC. SIM chromatogram of CoPPIX is presented in Figure S1 (Supplementary information A)

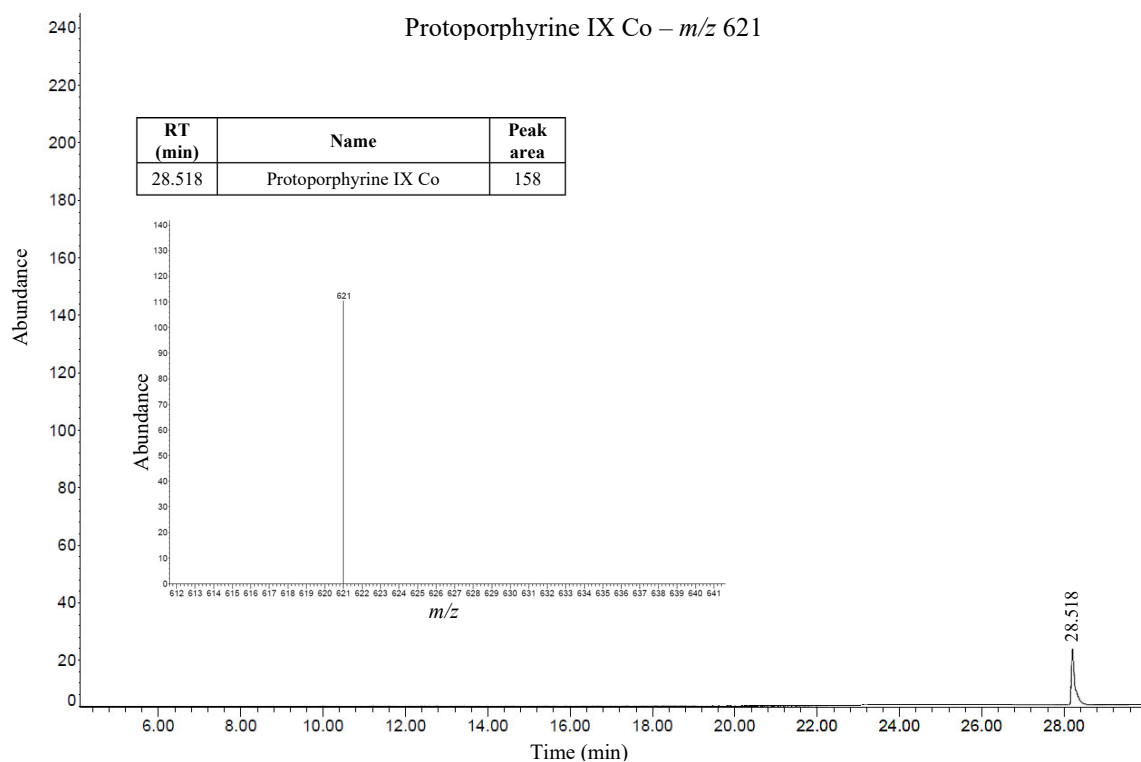


Figure S17. SIM chromatogram and mass spectrum (inset) of dichloromethane:methanol extract of the sediment of SR-SC. SIM chromatogram of CoPPIX is presented in S1 (Supplementary information A)

Table S2. Concentrations of CoPPIX in SR-BC and SR-SC based on GC-MS analyzes of m/z

621

Sample	Sample			SD	Average	Unit
	1	2	3			
SR-BC supernatant	0	0	0	0	0	μM
SR-BC sediment	0	0	0	0	0	$\mu\text{mol/kg}$
SR-SC supernatant	0.020	0.020	0.020	1,53E-04	0.020	μM
SR-SC sediment	0.521	0.523	0.516	3,87E-03	0.520	$\mu\text{mol/kg}$

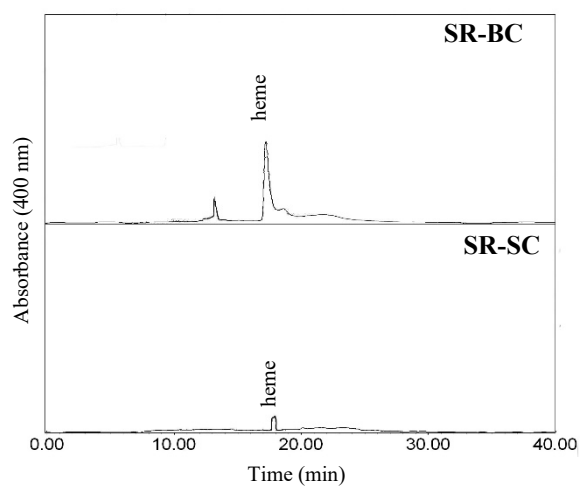


Figure S18. Detection of heme in SR-BC and SR-SC—HPLC-PAD chromatograms at 400 nm. HPLC-PAD chromatogram of heme is presented in Figure S3A (Supplementary information A)

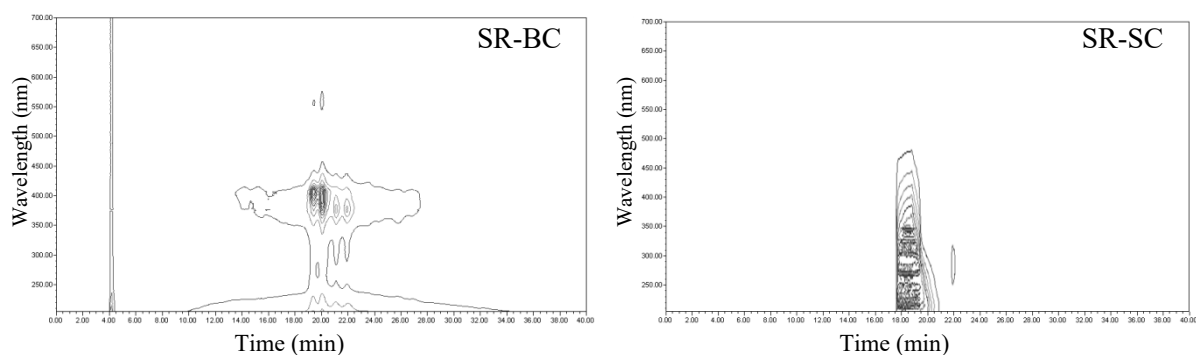


Figure S19. High-performance liquid 3D chromatograms of organic extracts of sediments of SR-BC and SR-SC obtained using HPLC-PAD

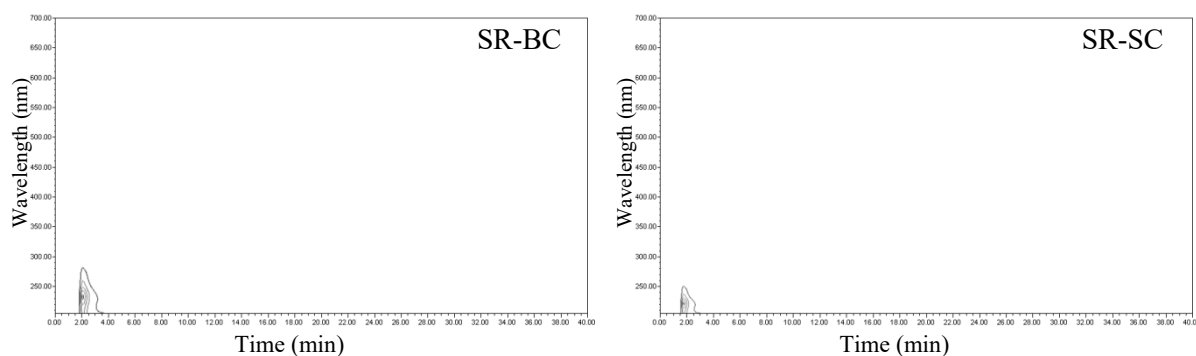


Figure S20. High-performance liquid 3D chromatograms of organic extracts of supernatants of SR-BC and SR-SC obtained using HPLC-PAD

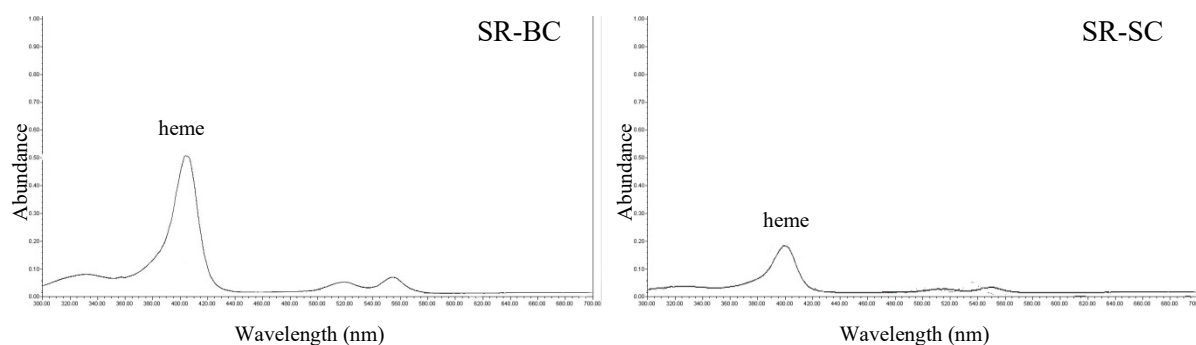


Figure S21. UV-Vis spectra of organic extracts of sediments of SR-BC and SR-SC obtained using HPLC-PAD

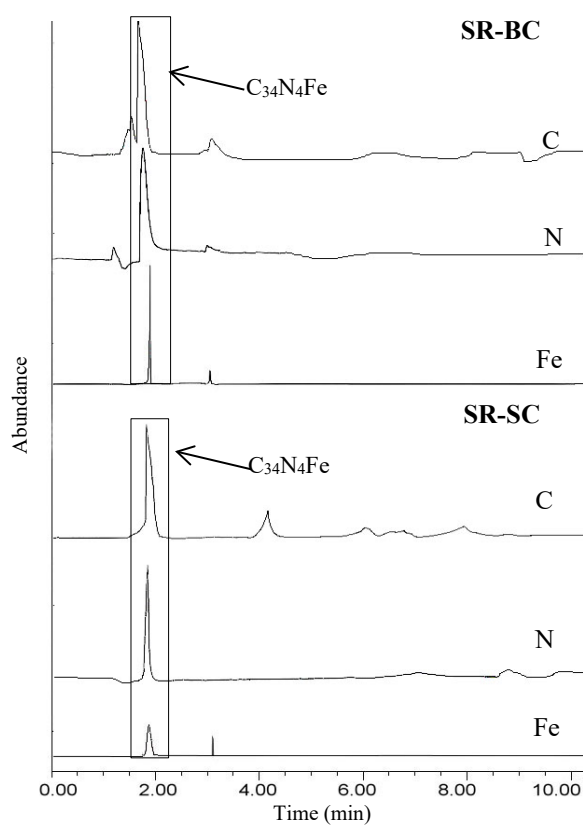


Figure S22. Detection of heme (carbon, nitrogen, and iron) in SR-BC and SR-SC—GC-AED chromatograms. AED chromatogram of heme is presented in Figure S5 (Supplementary information A)