

Supplementary Figure S1

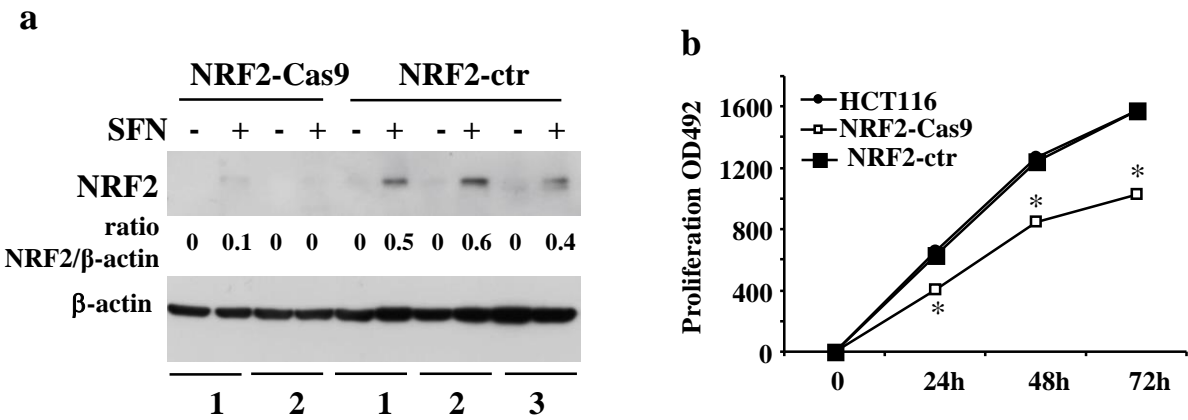


Figure S1. Analysis of NRF2 control and Cas9 clones. (**a**) NRF2-ctr (clones 1, 2, 3) and NRF2-Cas9 (clones 1, 2) were treated SFN (2 μ M) for 16 h and then analysed by Western blot to detect NRF2 protein. Actin was used as protein loading control. The ratio of NRF2 levels vs β -actin, following densitometric analysis using ImageJ software, is shown. (**b**) NRF2-ctr (clone 2), NRF2-Cas9 (clon 2) and HCT116 cells were exposed to SFN (2 μ M) for 24, 48 and 72 h, and cell viability was assessed by XTT assay. * $P \leq 0.01$.