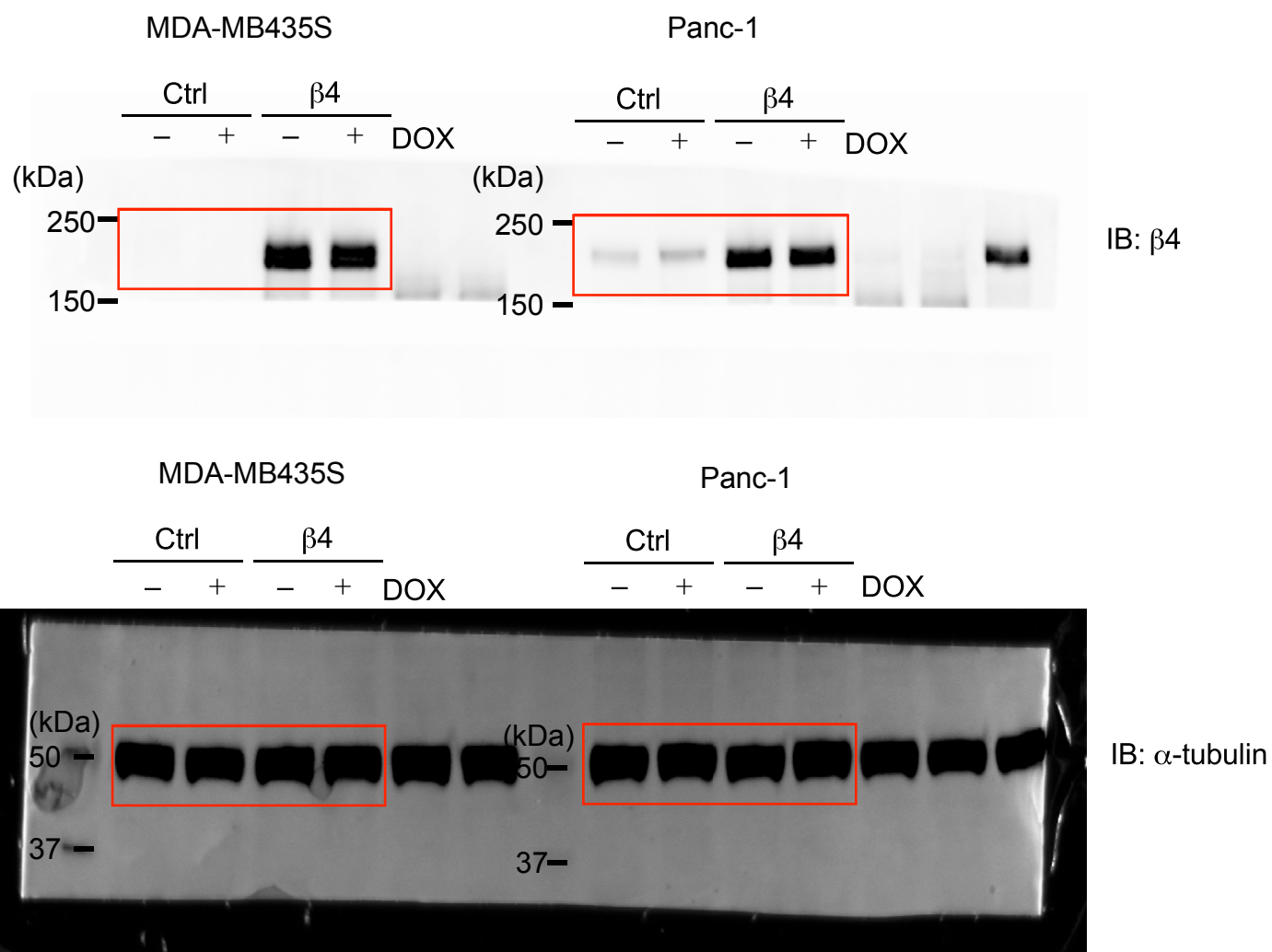
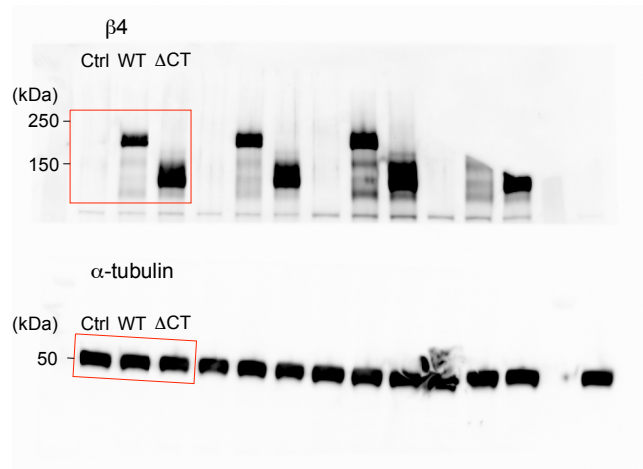


**Figure S1. Western blot analysis of P-glycoprotein expression.** Control (Ctrl), and WT $\beta$ 4-MDA-MB435S cells were treated with solvent DMSO or 1  $\mu$ M DOX for 24h, and the cell lysates were analyzed by Western blot using anti-P-glycoprotein antibody.  $\alpha$ -tubulin was used as a loading control. Unprocessed images are shown in Figure S10.

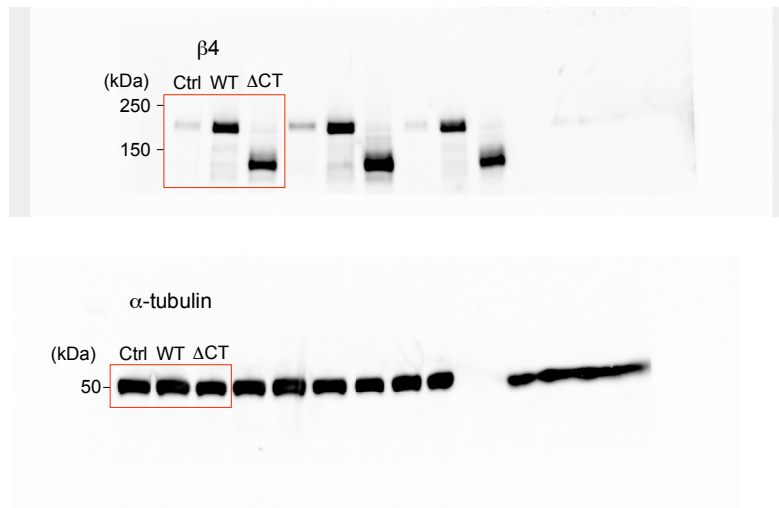


**Figure S2. Unprocessed blot images in Fig. 2e and 2f.**  
Red square indicates cropped section.

### MDA-MB435S

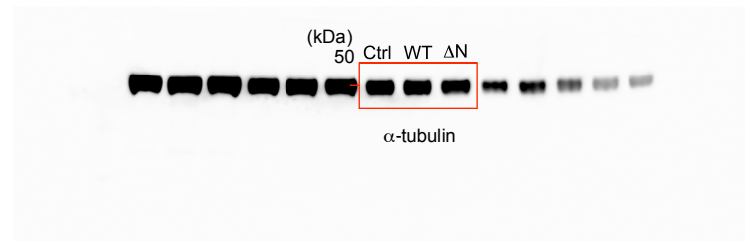
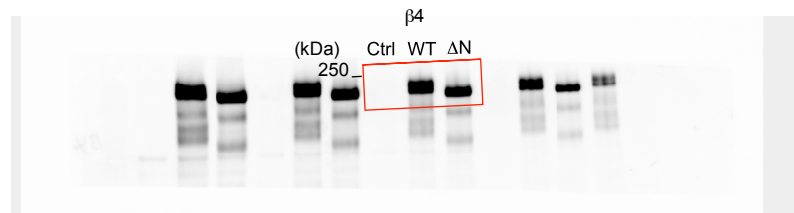


### Panc-1

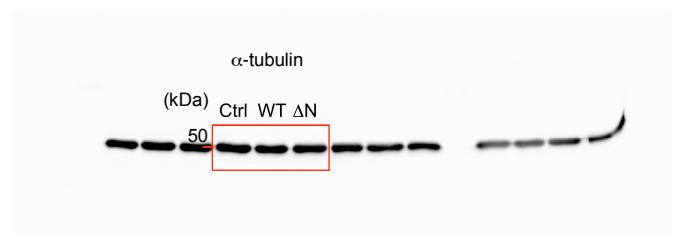
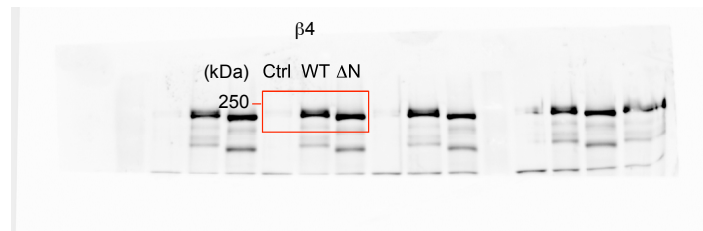


**Figure S3. Unprocessed blot images in Fig. 3a.**  
Red square indicates cropped section.

MDA-MB435S



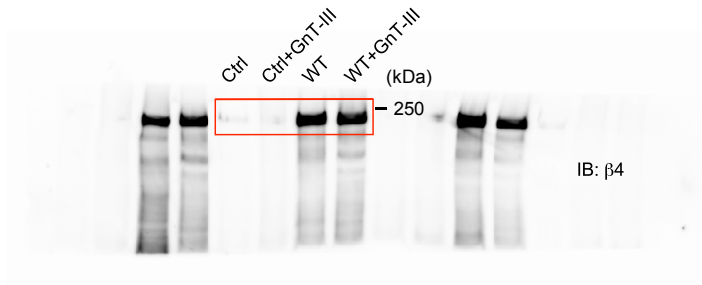
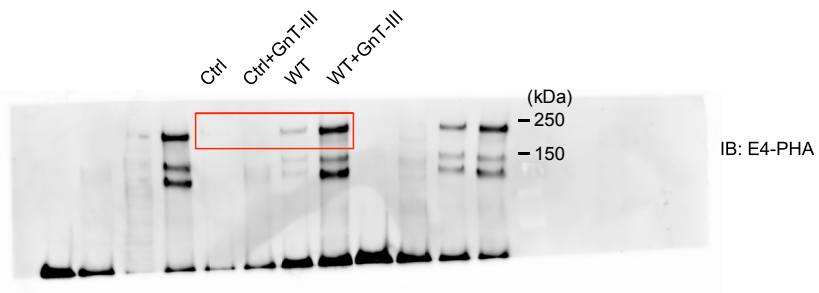
Panc-1



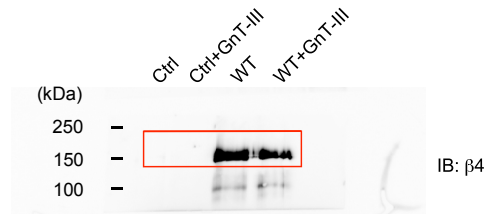
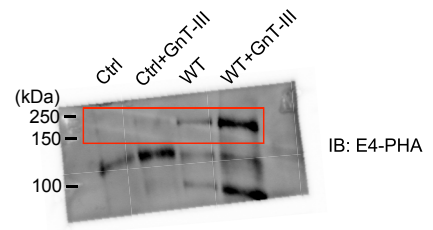
**Figure S4. Unprocessed blot images in Fig. 4b**  
Red square indicates cropped section.



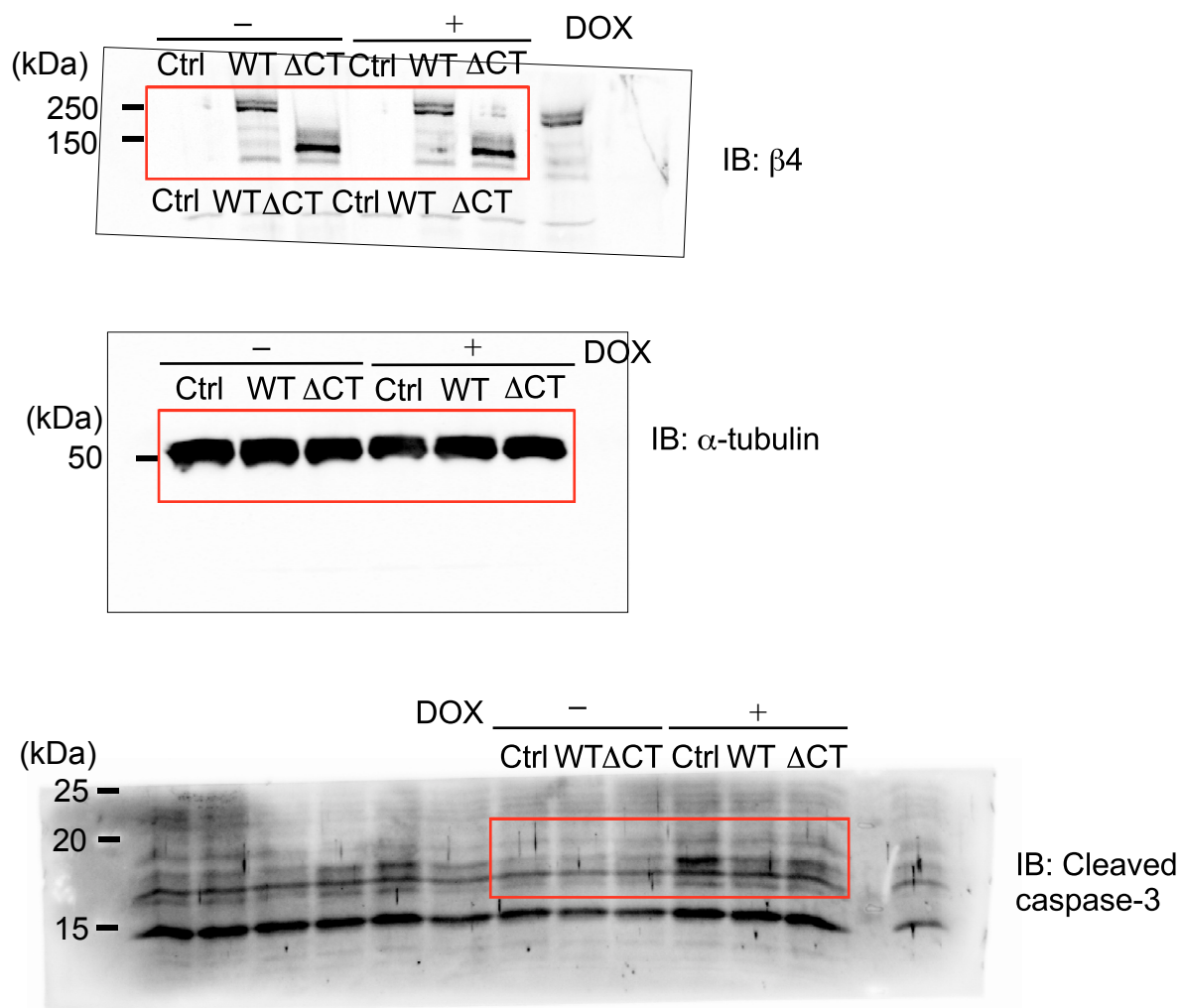
# MDA-MB435S



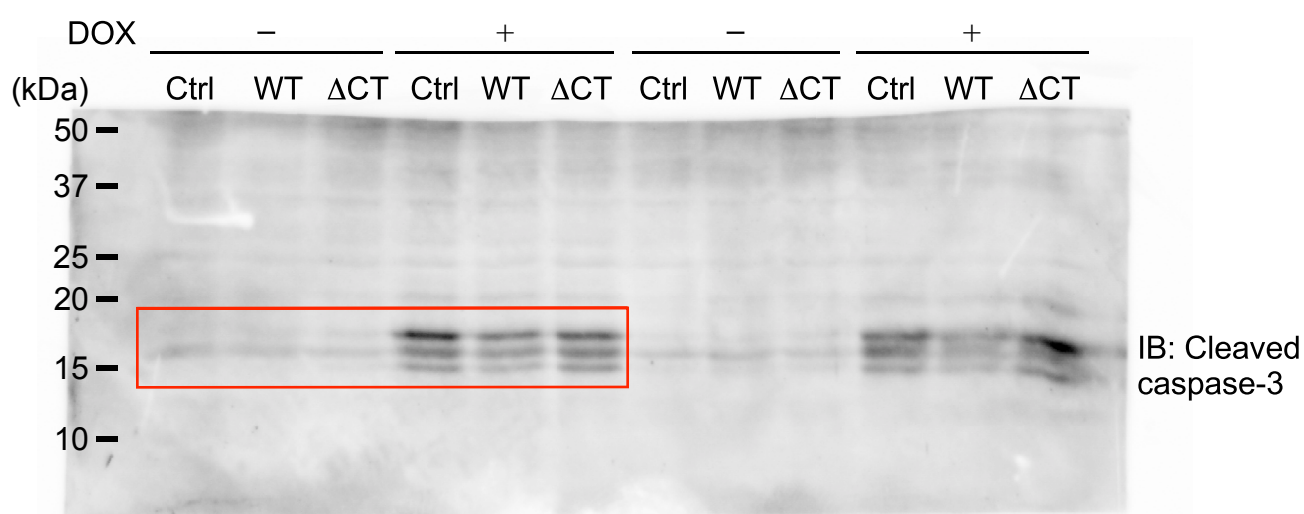
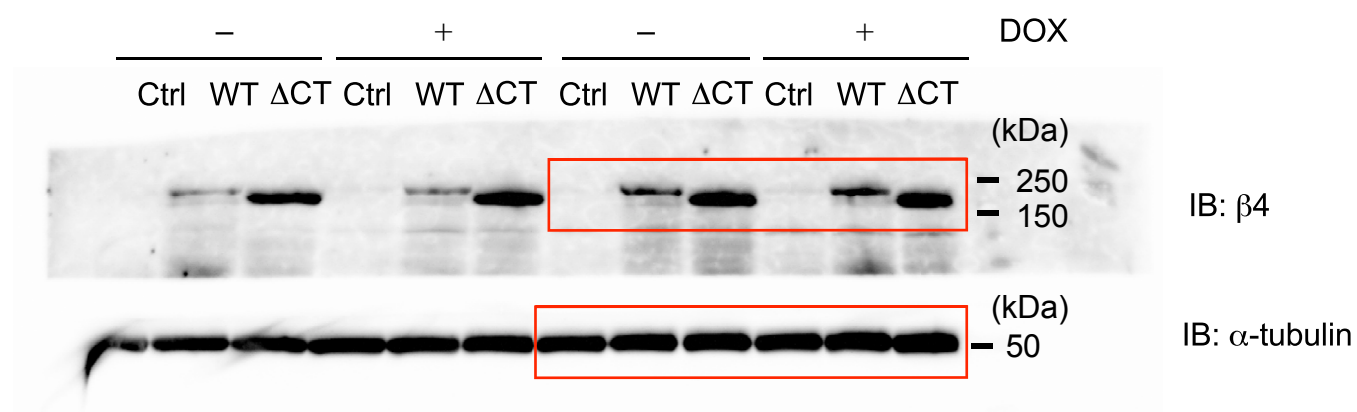
# Panc-1



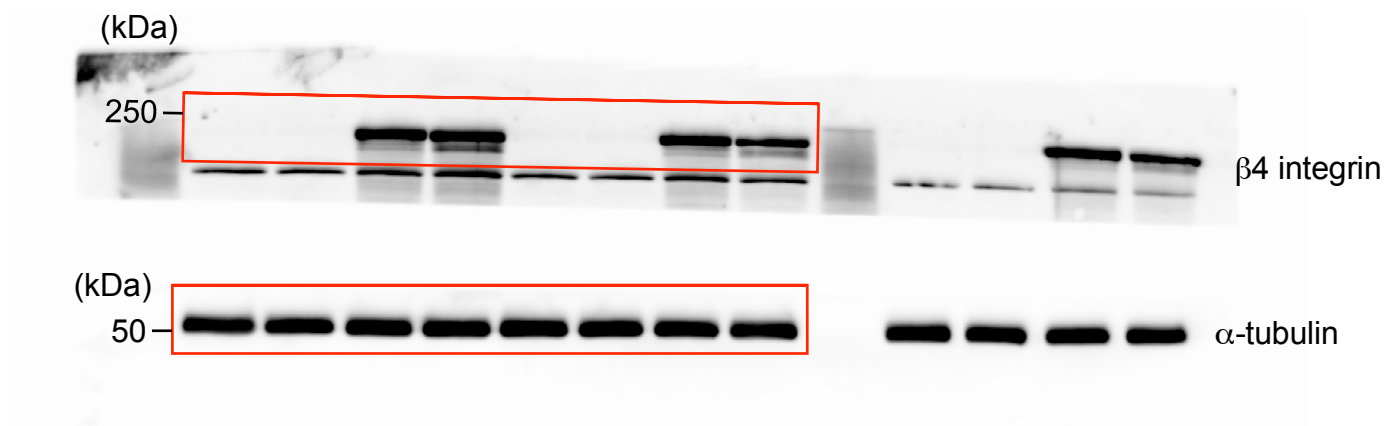
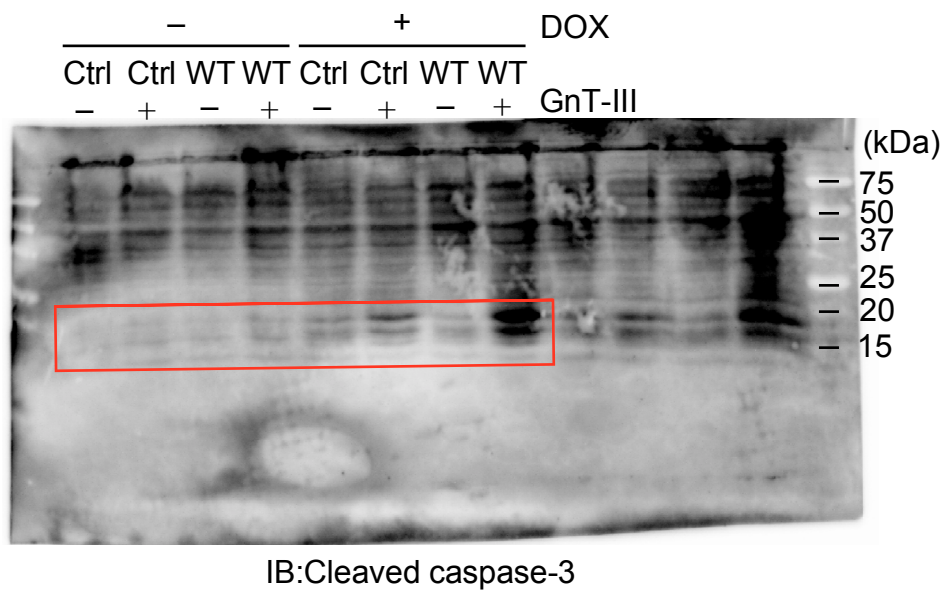
**Figure S5. Unprocessed blot images in Fig 5b.**  
Red square indicates cropped section.



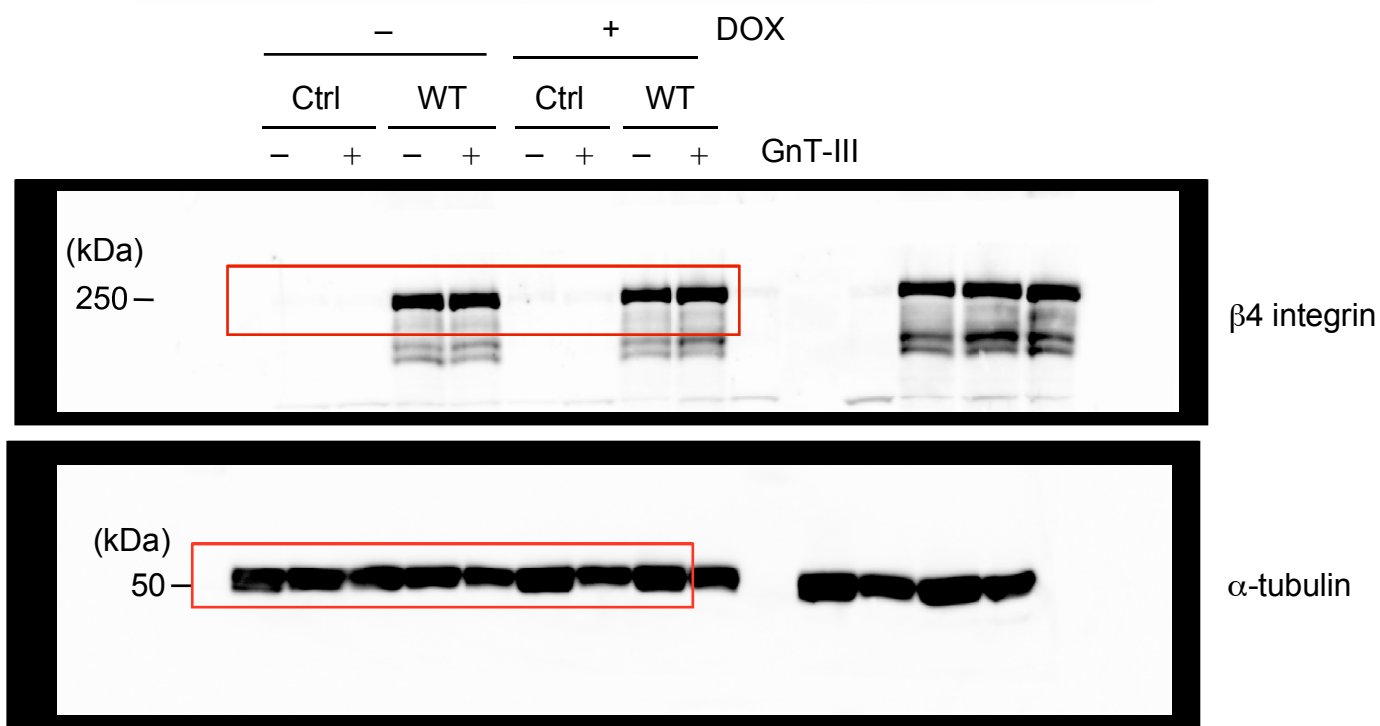
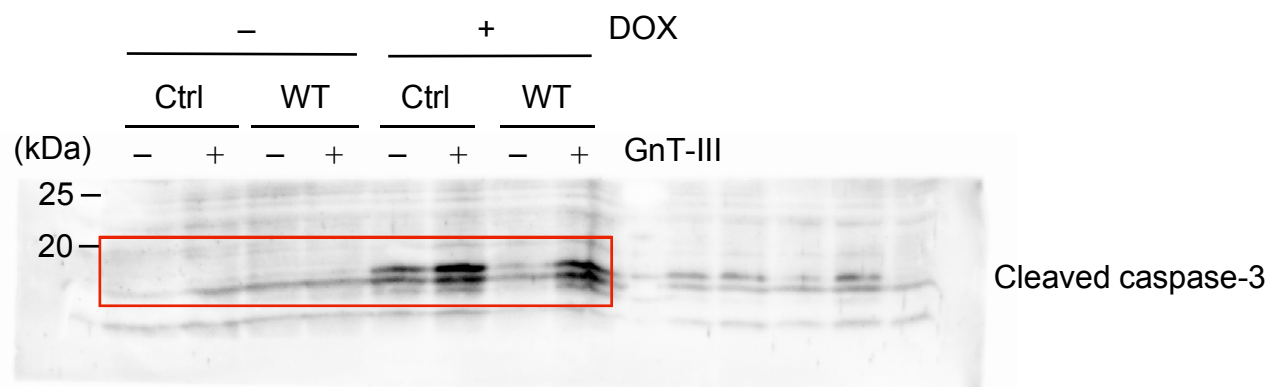
**Figure S6. Unprocessed blot images in Fig. 7a.**  
Red square indicates cropped section.



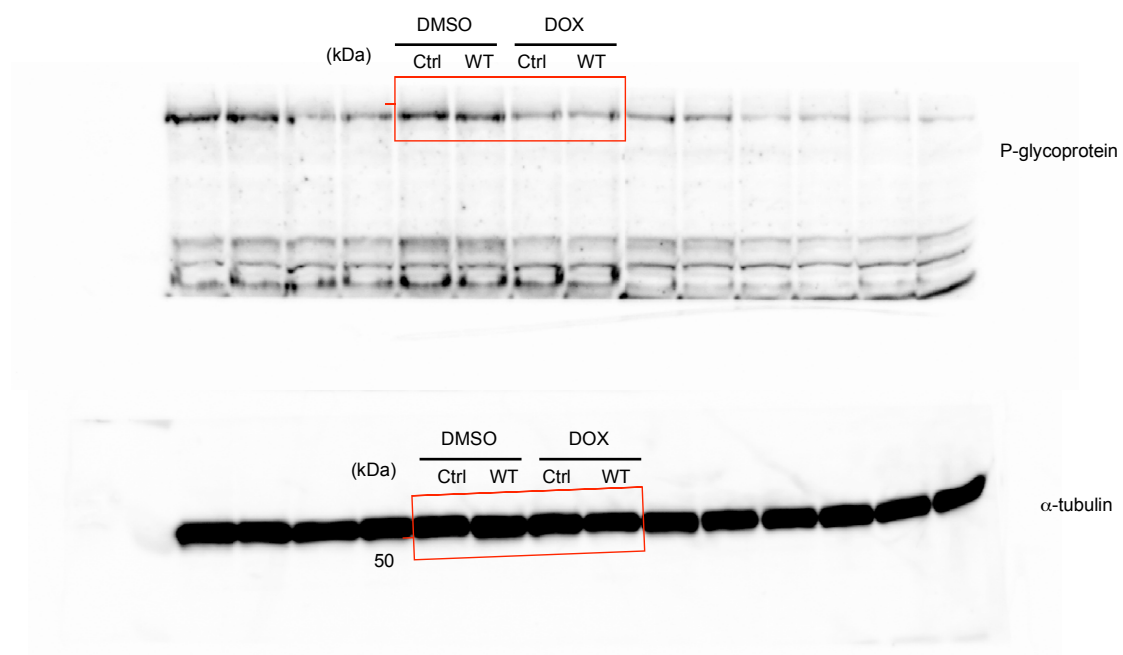
**Figure S7. Unprocessed blot images in Fig. 7b.**  
 Red square indicates cropped section.



**Figure S8. Unprocessed blot images in Figs. 8a.**  
Red square indicates cropped section.



**Figure S9. Unprocessed blot images in Figs. 8b.**  
Red square indicates cropped section.



**Figure S10. Unprocessed blot images in Figure S1.**  
Red square indicates cropped section.