

Name	Forward Sequence (5'-3')	Reverse Sequence (3'-5')
E-cadherin	CGGGAATGCAGTTGAGGATC	AGGATGGTGTAAGCGATGGC
Vimentin	CCTTGAACGCAAAGTGGAATC	GACATGCTGTTCTGAATCTGAG
N-cadherin	CCTCCAGAGTTTACTGCCATGAC	GTAGGATCTCCGCCACTGATTC
CD206	AGCCAACACCAGCTCCTCAAGA	CAAAACGCTCGCGCATTGTCCA
Actin	CACCATTGGCAATGAGCGGTTC	AGGTCTTTGCGGATGTCCACGT

Figure S1. The primers for qPCR.

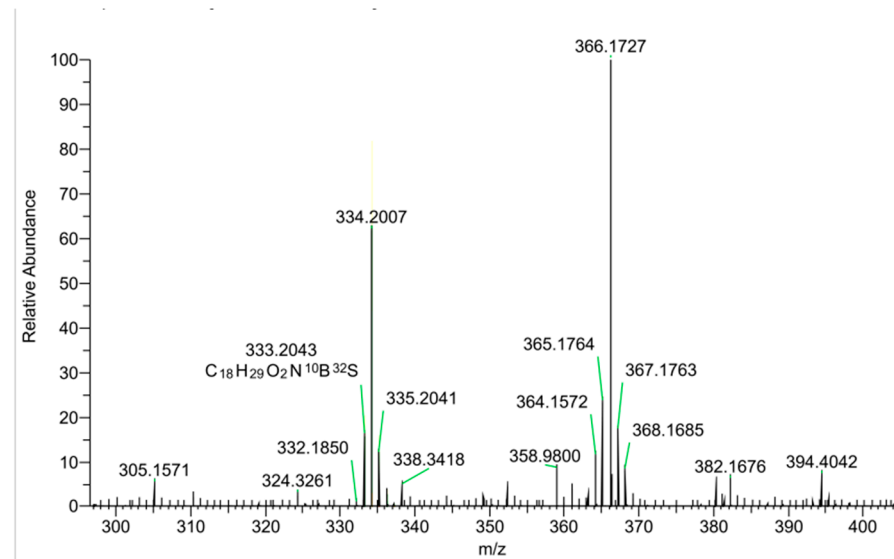


Figure S2. The ESI-MS spectrum of DQ (366.17 m/z).

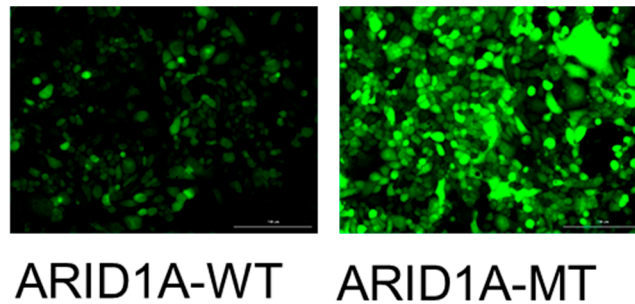


Figure S3. The levels of basal ROS ARID1A wildtype (ARID1A-WT) and ARID1A-mutant (ARID1A-MT) cell lines using DCFH-DA probe. Scale bar:200 um.

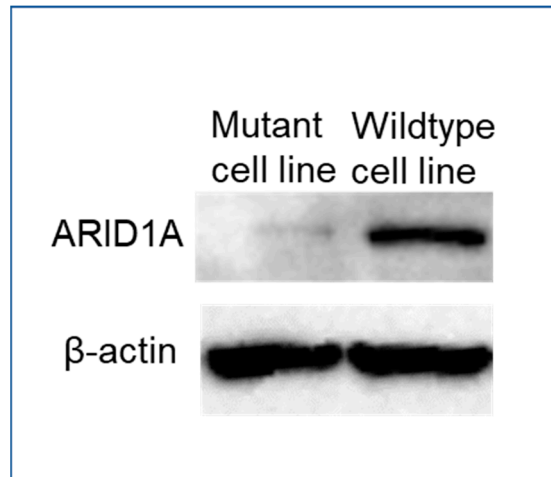


Figure S4. The expression of ARID1A in mutant and wildtype cell line using western blot.