

Figure S1

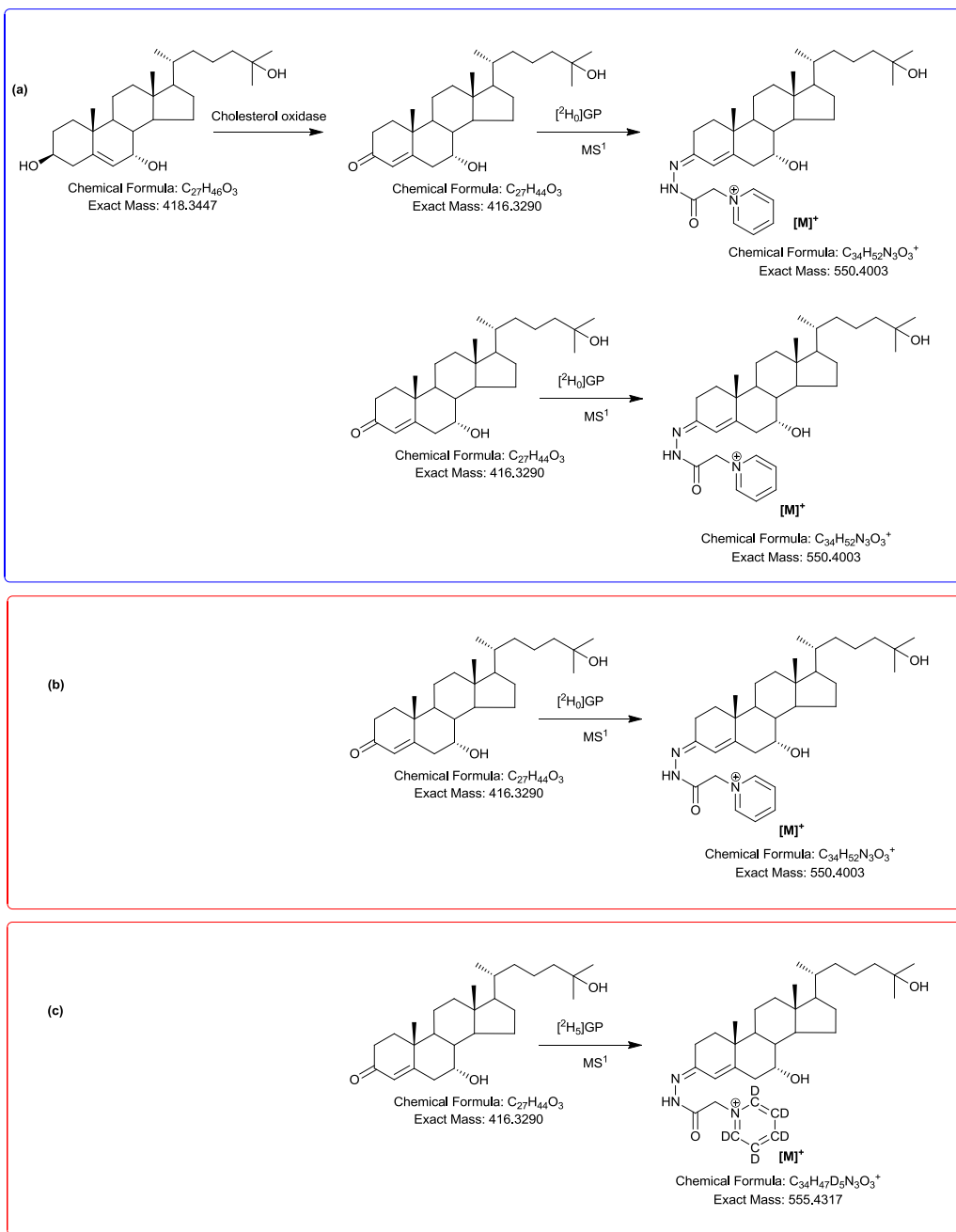


Figure S2

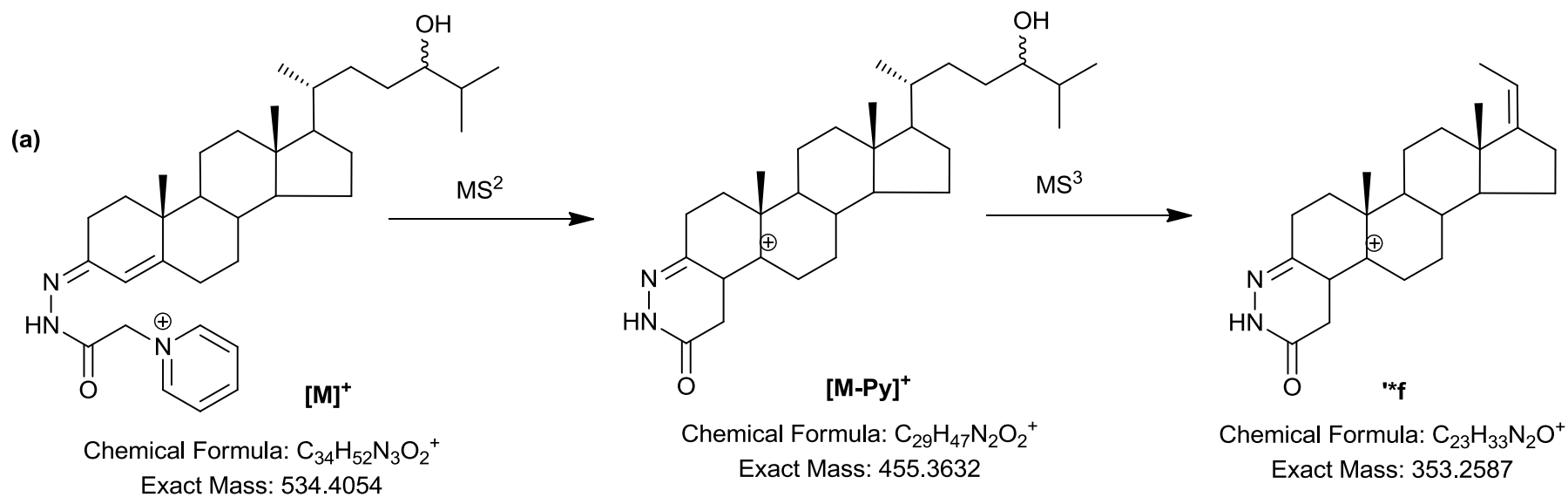


Figure S3

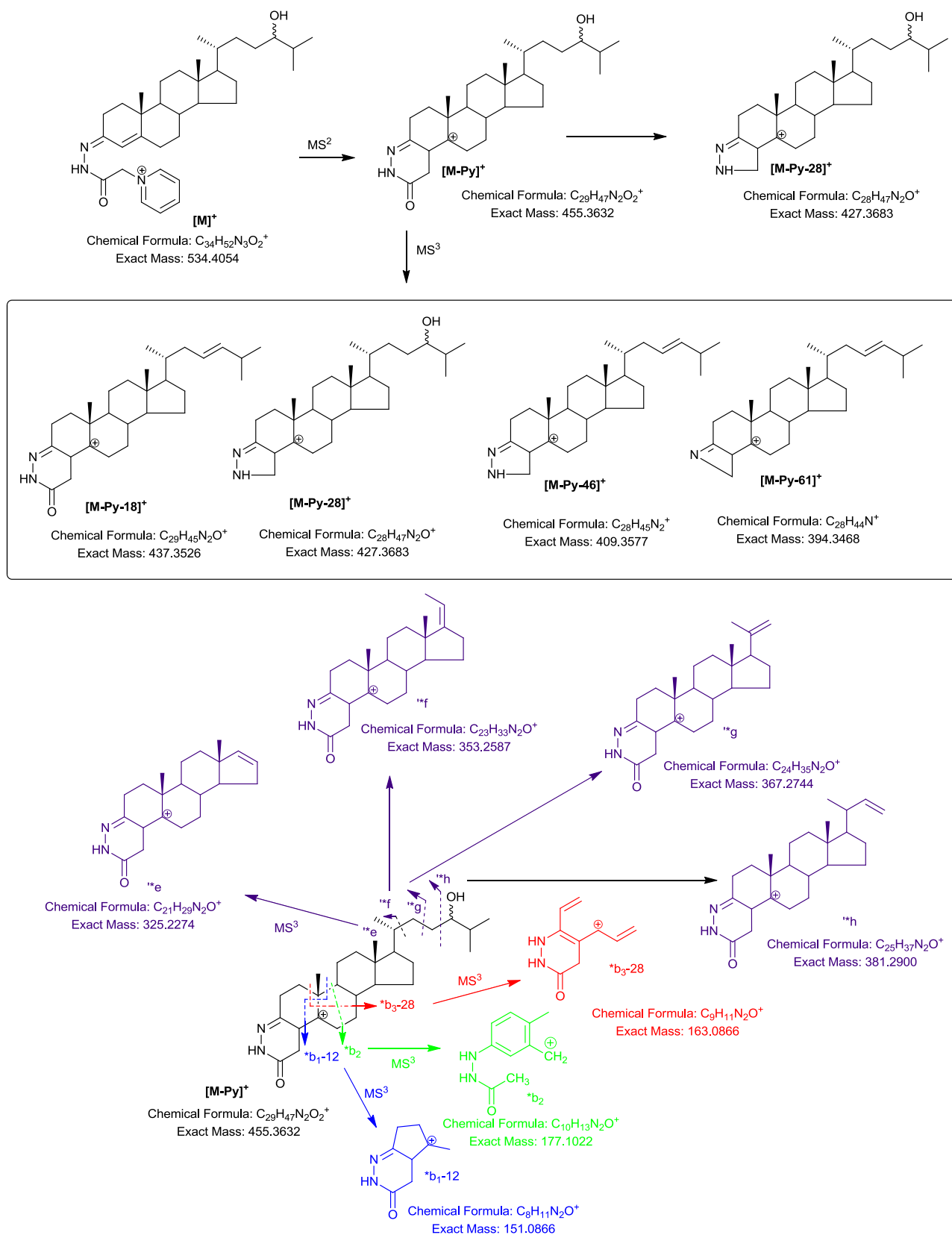
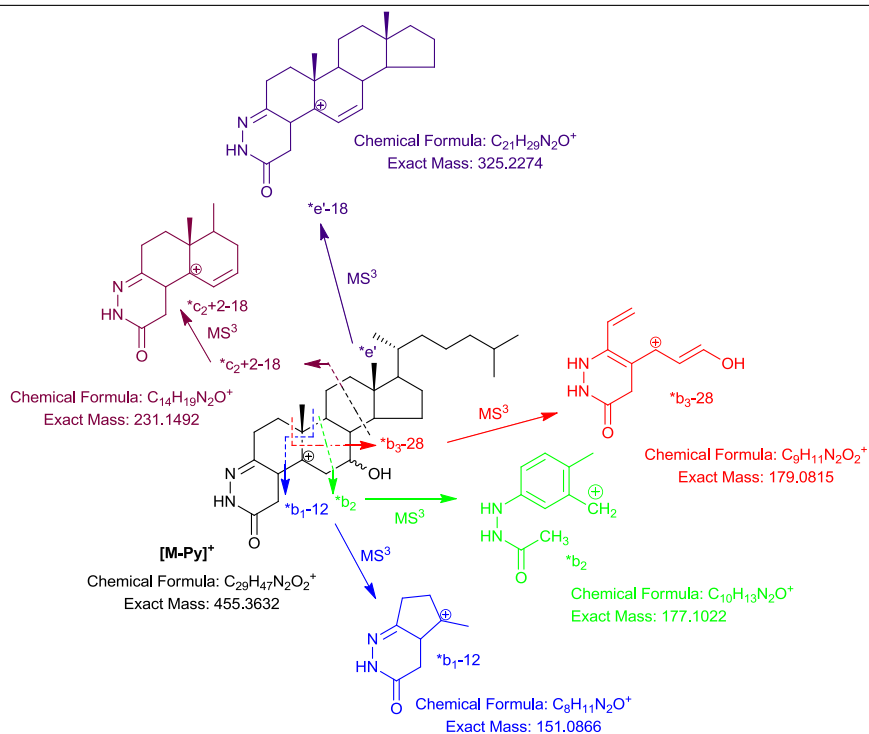
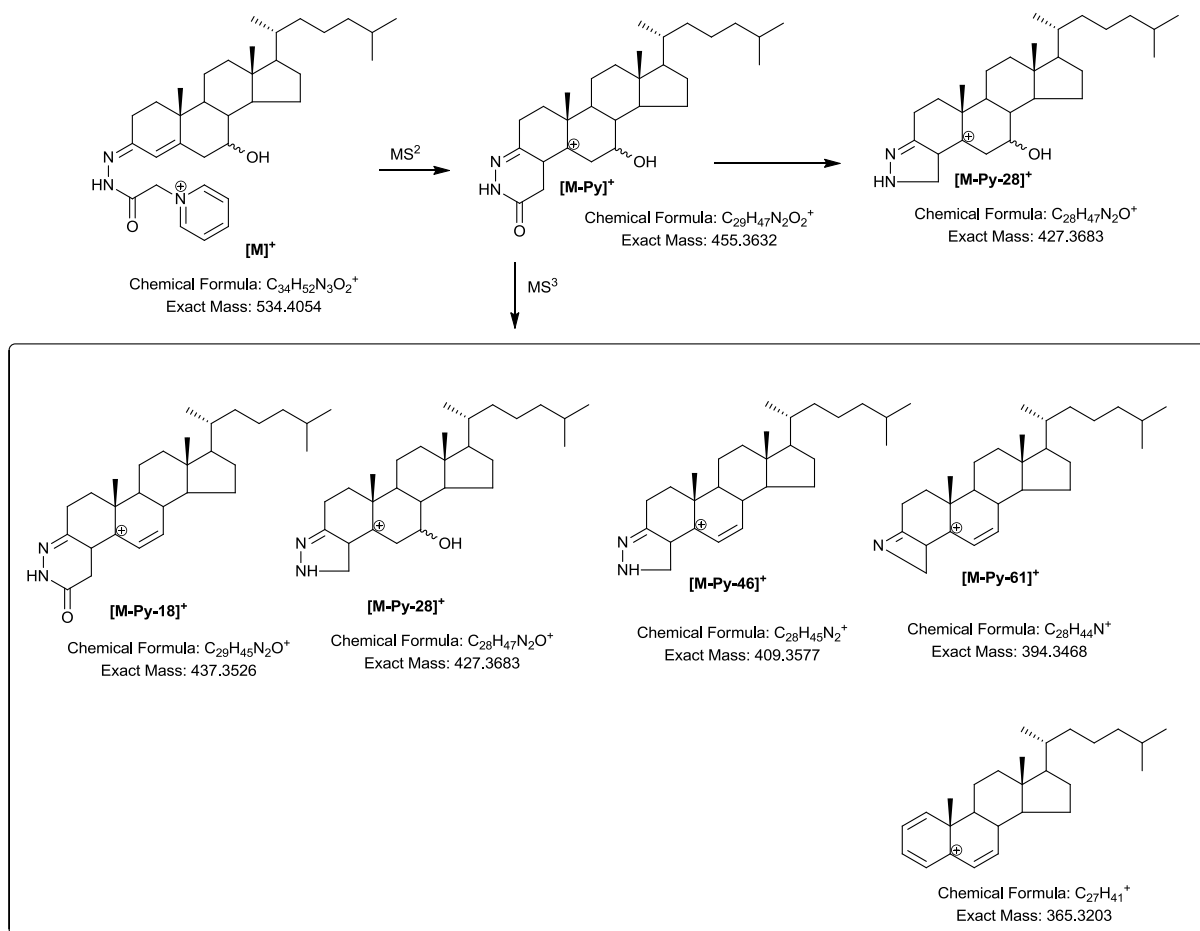
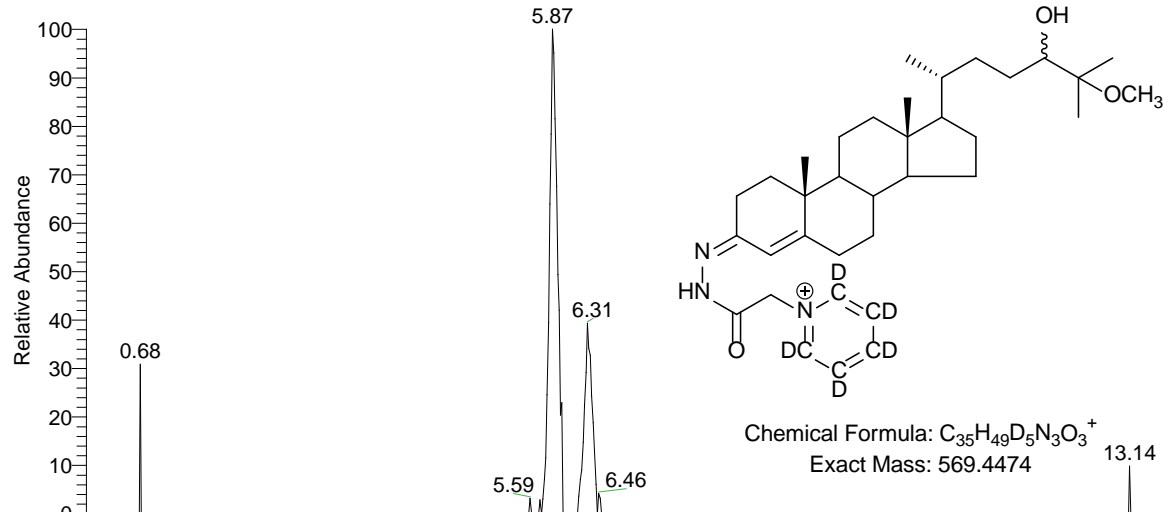


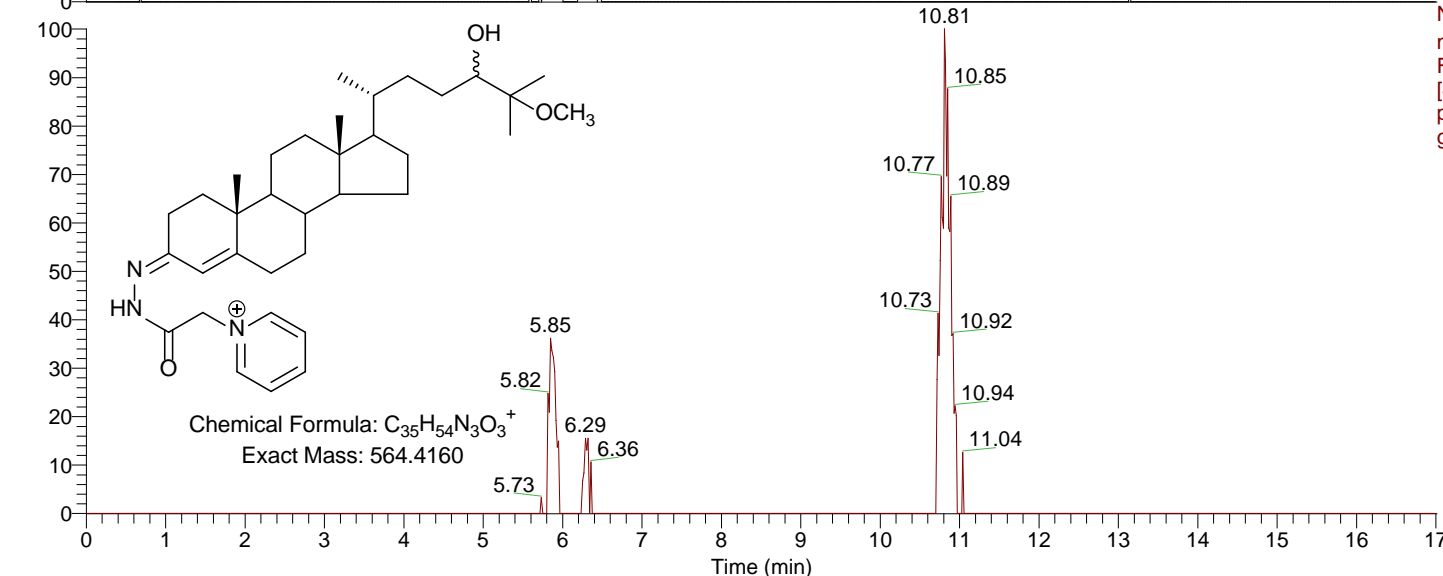
Figure S4



RT: 0.00 - 17.01

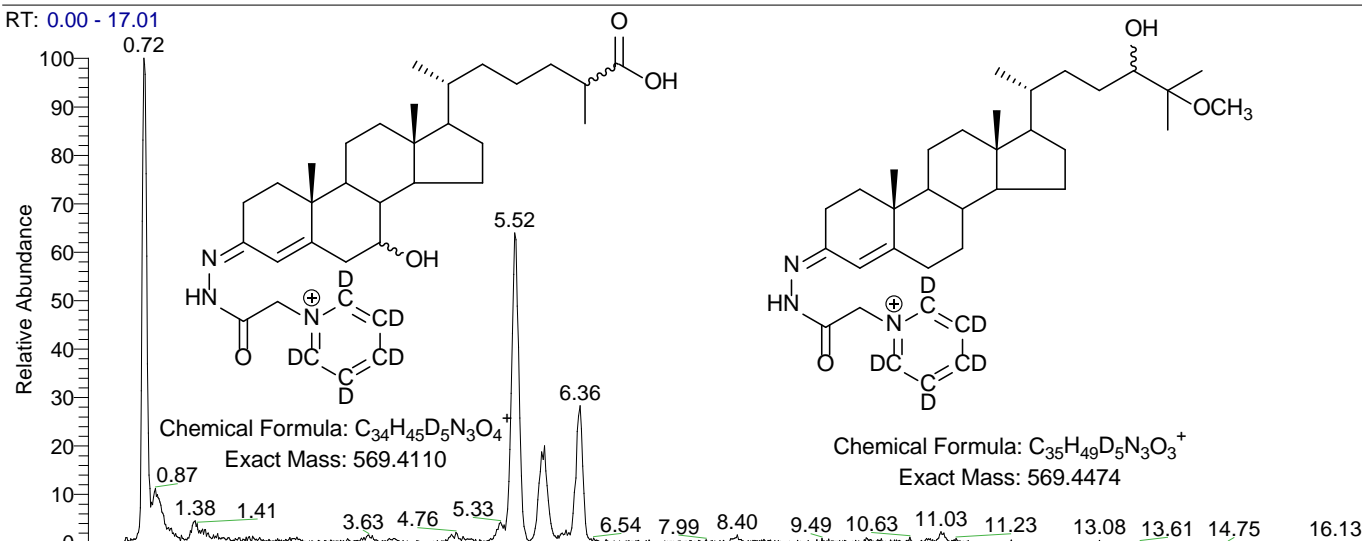


NL: 2.39E3
m/z= 569.4446-569.4502 F:
FTMS + p ESI Full ms
[400.00-610.00] MS
pc_m_plasma_ko_1167_fr1a_gpd5_fr1b_gpd0_120809_07



NL: 1.51E3
m/z= 564.4132-564.4188 F:
FTMS + p ESI Full ms
[400.00-610.00] MS
pc_m_plasma_wt_1178_fr1a_gpd0_fr1b_gpd5_120809_07

RT: 0.00 - 17.01



NL: 1.03E4

TIC F: ITMS + c ESI Full ms3

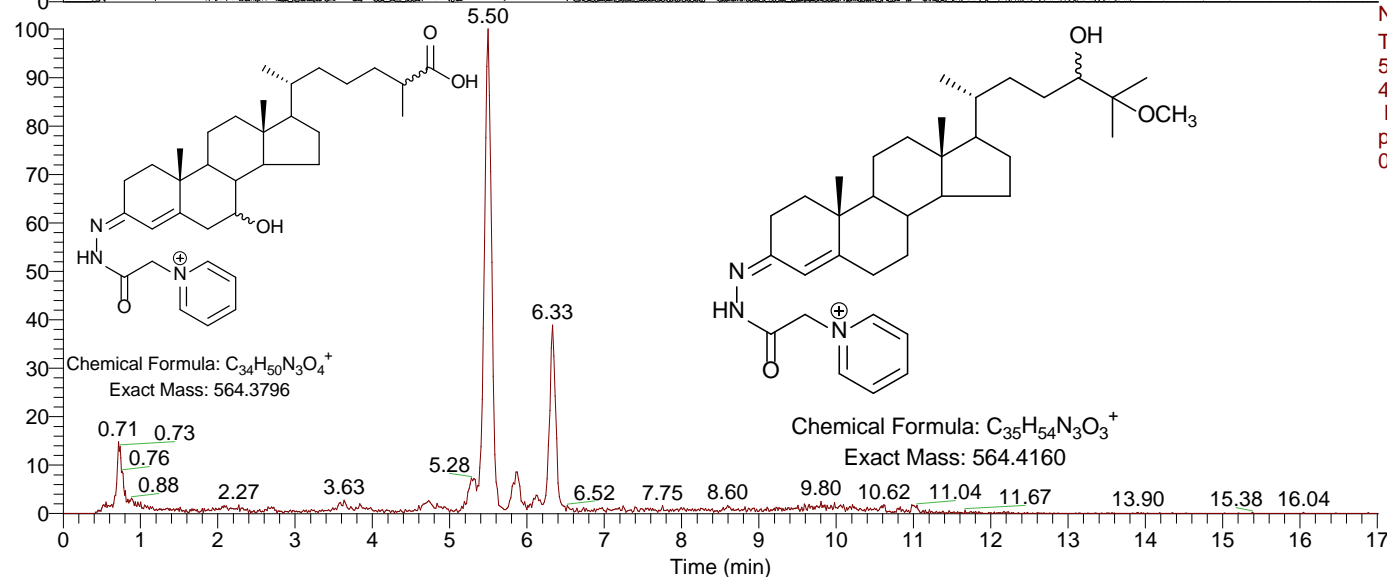
569.41@cid30.00

485.34@cid35.00 [130.00-575.00]

MS

pc_m_plasma_ko_1167_fr1a_gpd

5_fr1b_gpd0_120809_07



NL: 9.92E3

TIC F: ITMS + c ESI Full ms3

564.38@cid30.00

485.34@cid35.00 [130.00-575.00]

MS

pc_m_plasma_wt_1178_fr1a_gpd

0_fr1b_gpd5_120809_07

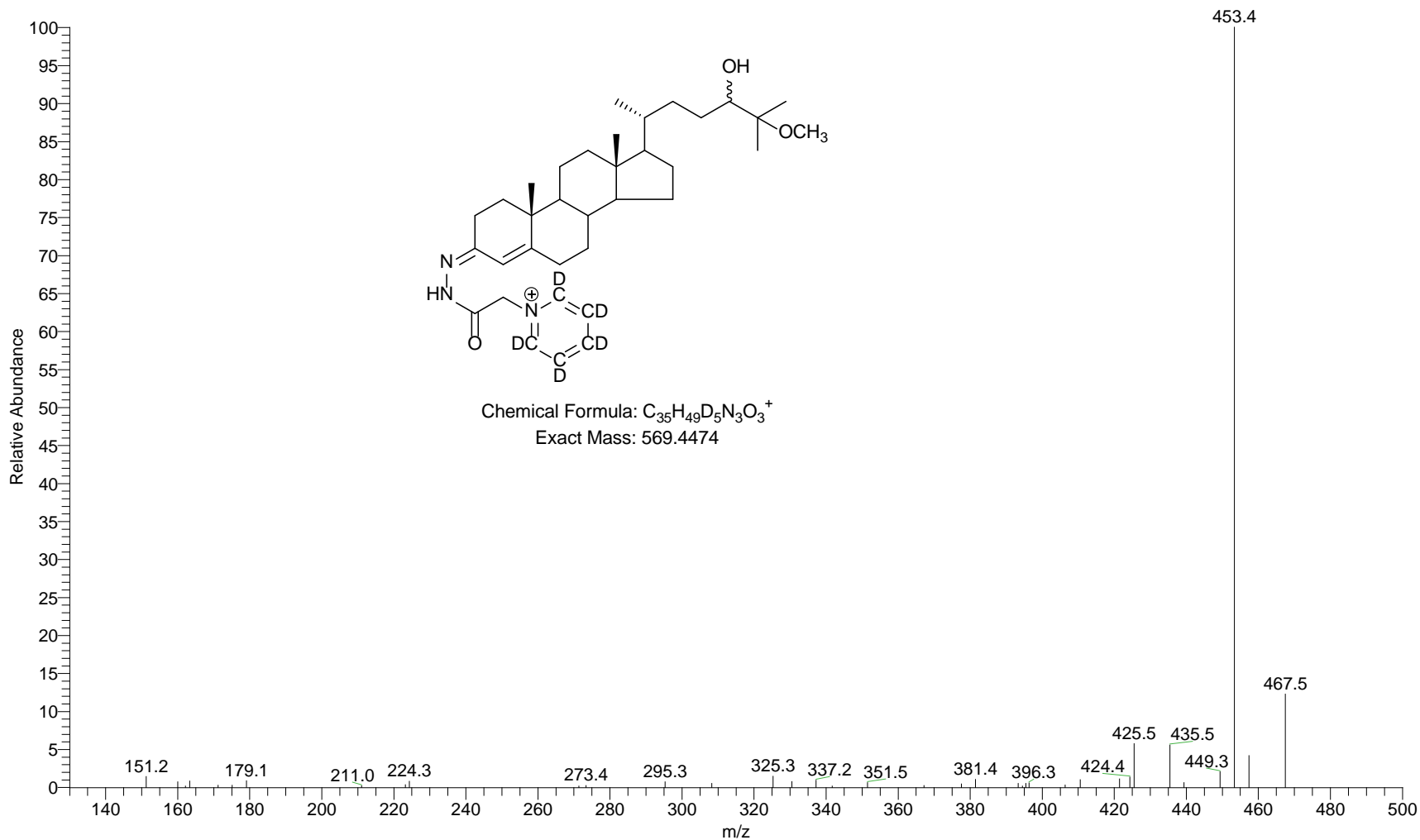
S5c

pc_m_plasma_ko_1167_fr1a_gpd5_fr1b_gp...

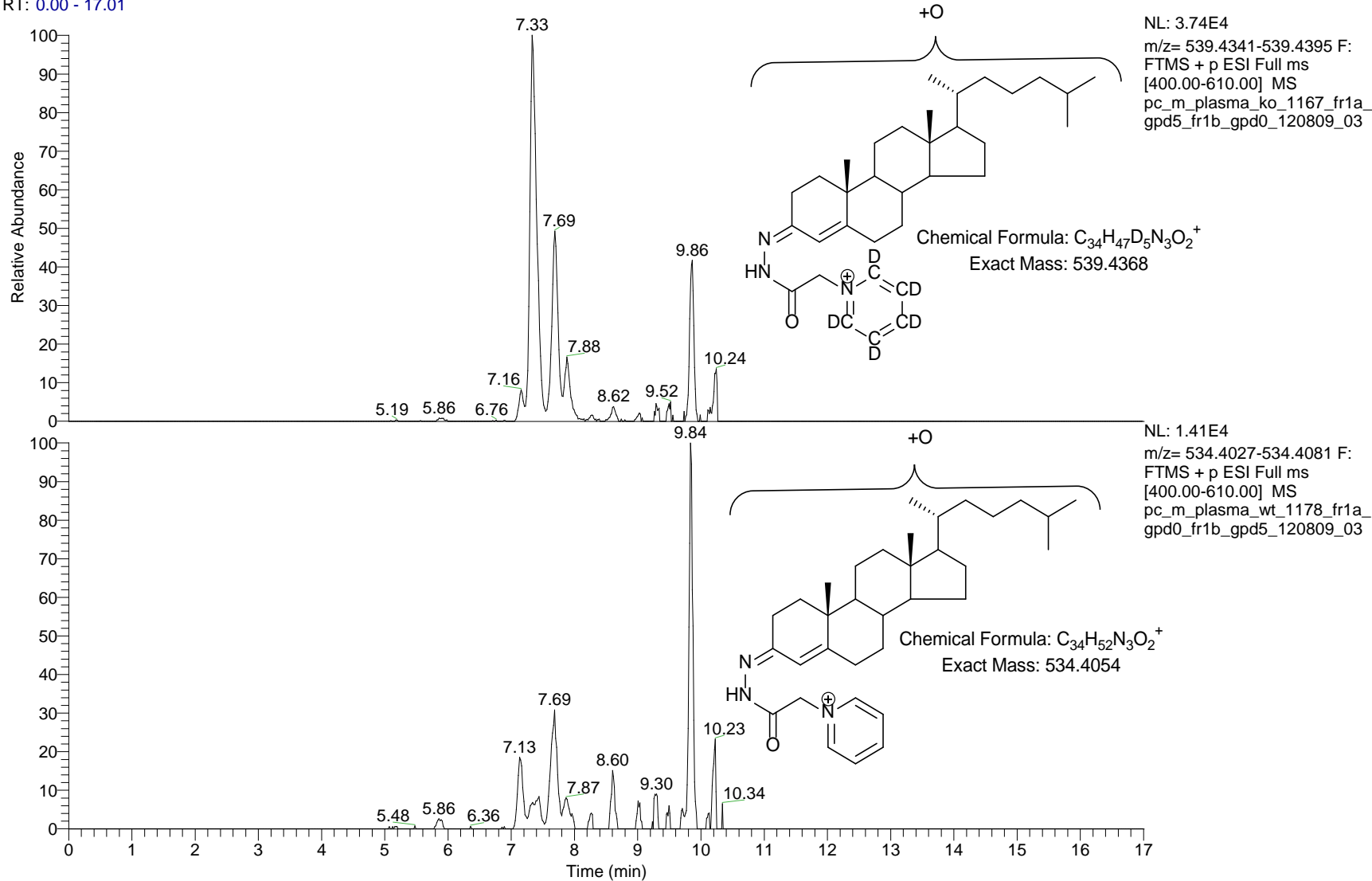
10/08/2012 03:59:44

pc_m_plasma_ko_1167_fr1a_gpd5_fr1b_gpd0_120809_07 #1158 RT: 5.87 AV: 1 NL: 1.30E3

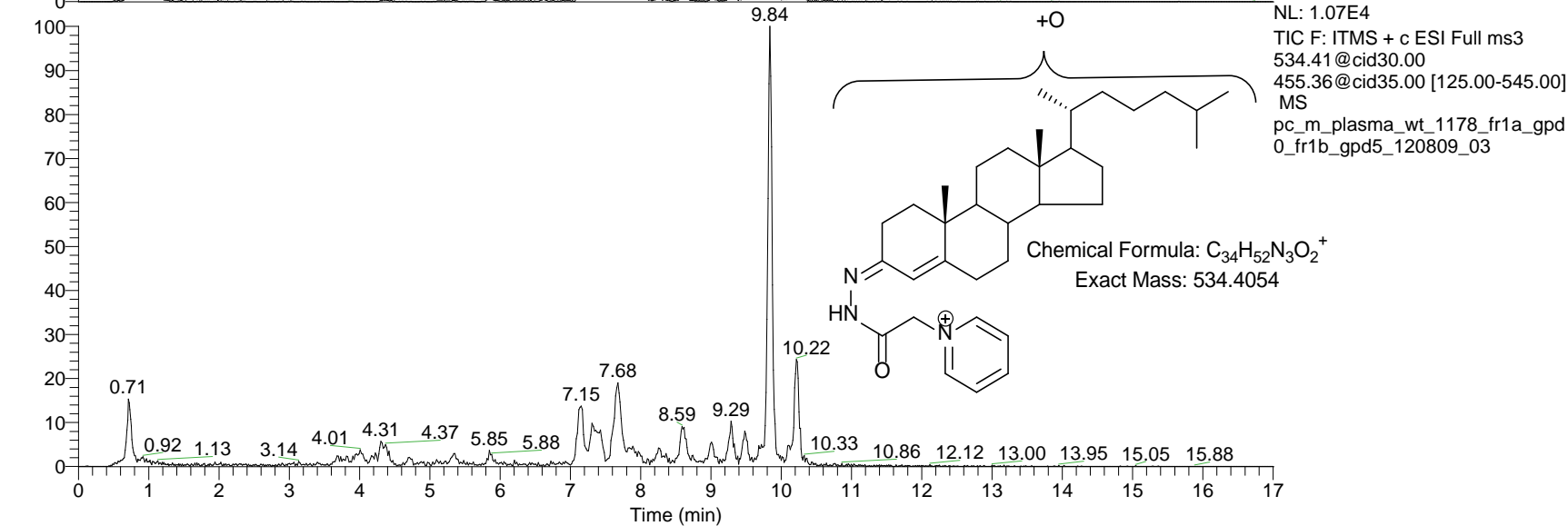
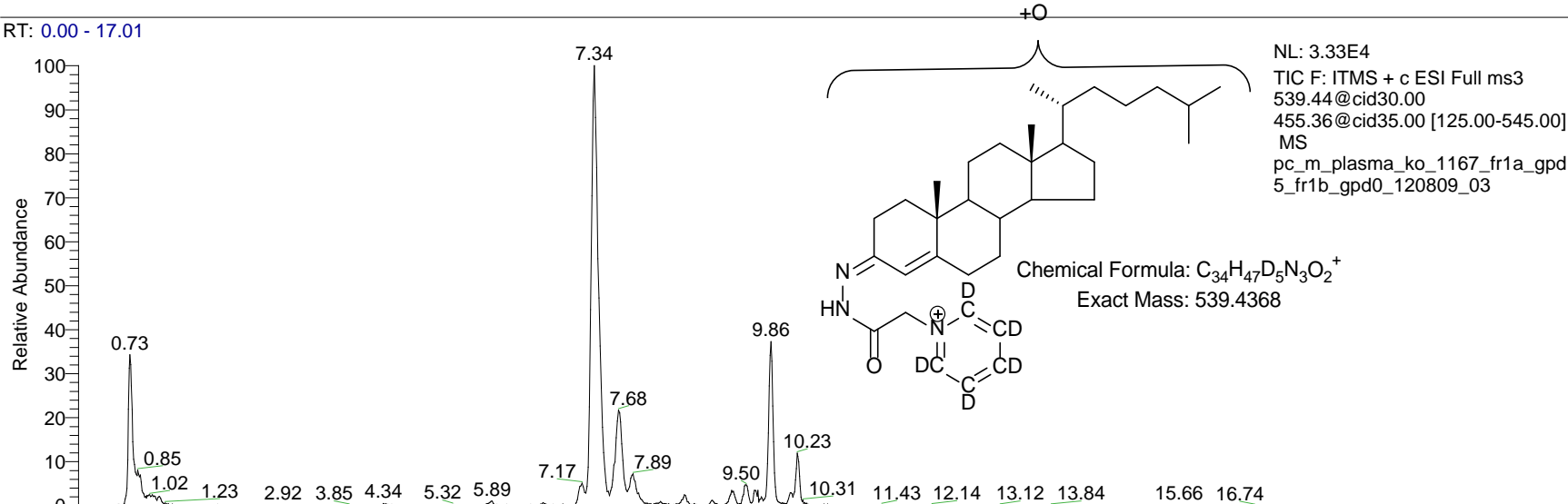
F: ITMS + c ESI Full ms3 569.41 @cid30.00 485.34 @cid35.00 [130.00-575.00]

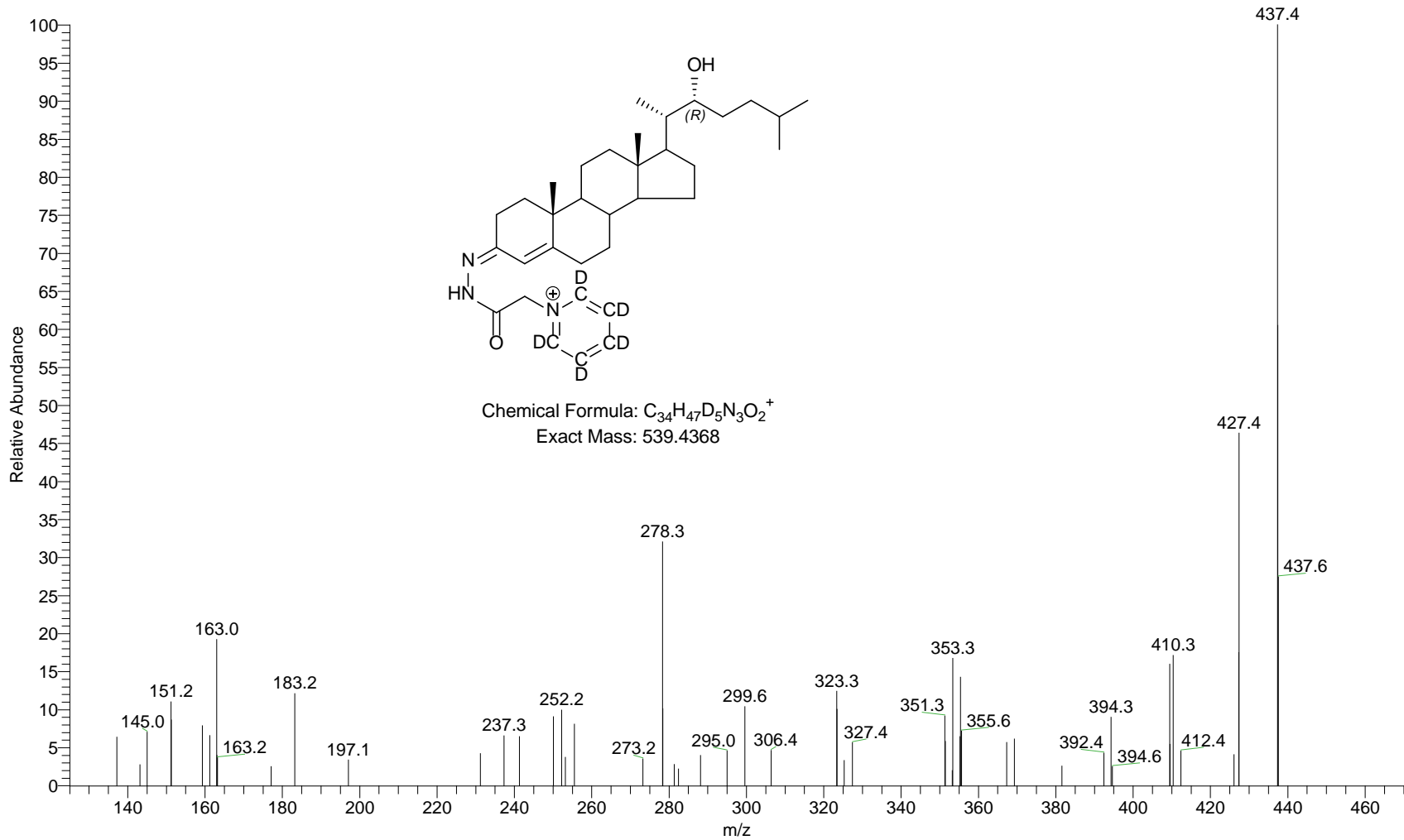


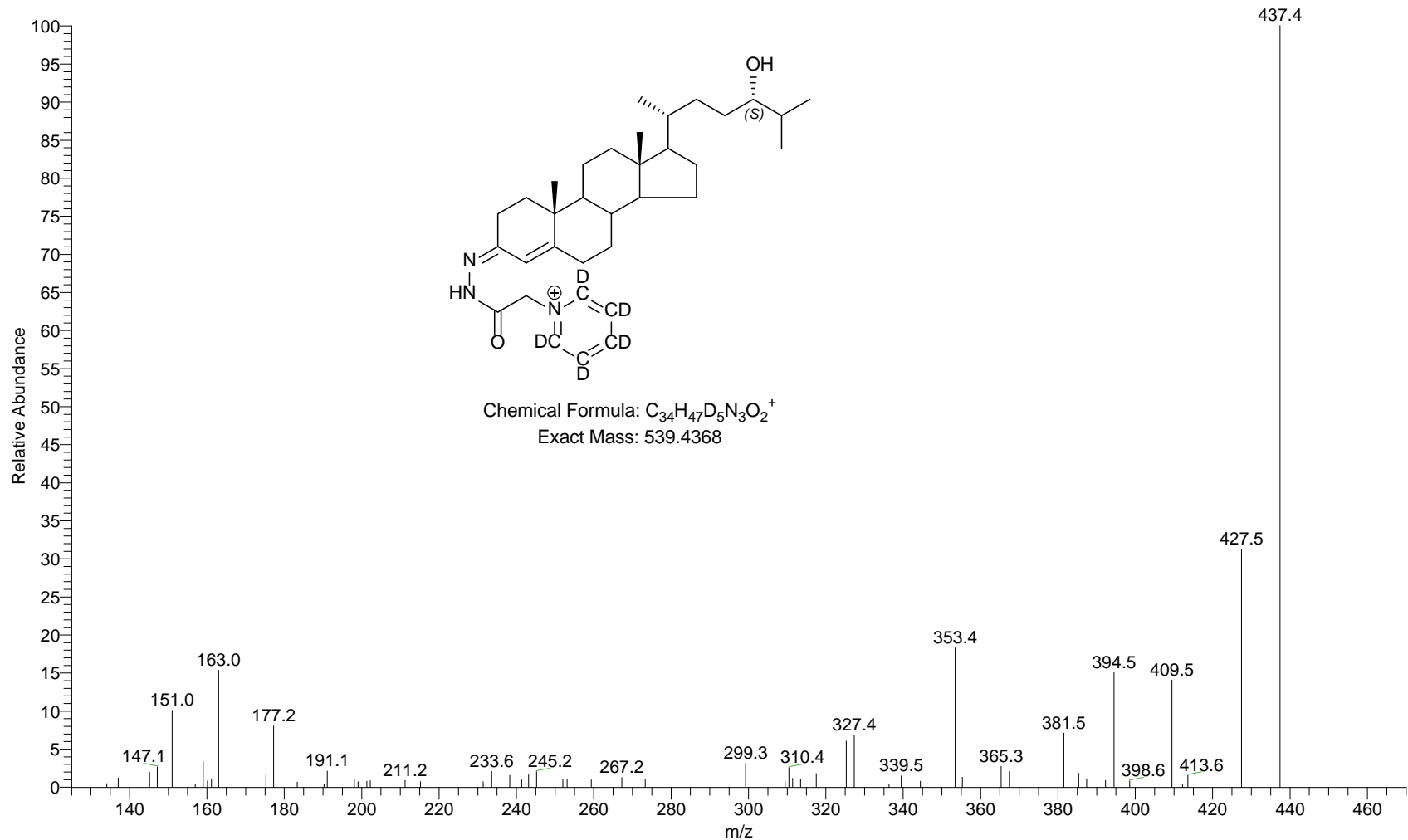
RT: 0.00 - 17.01

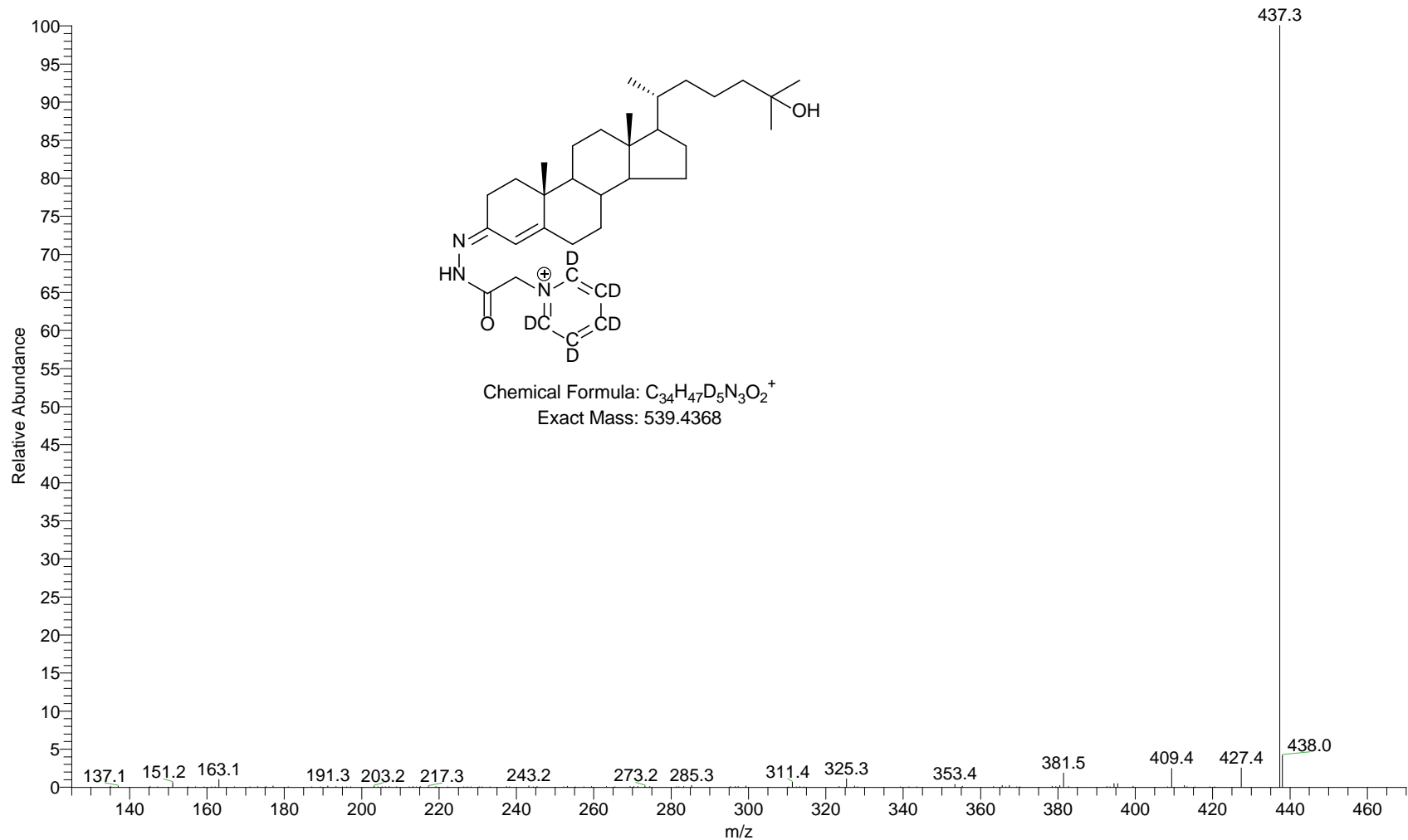


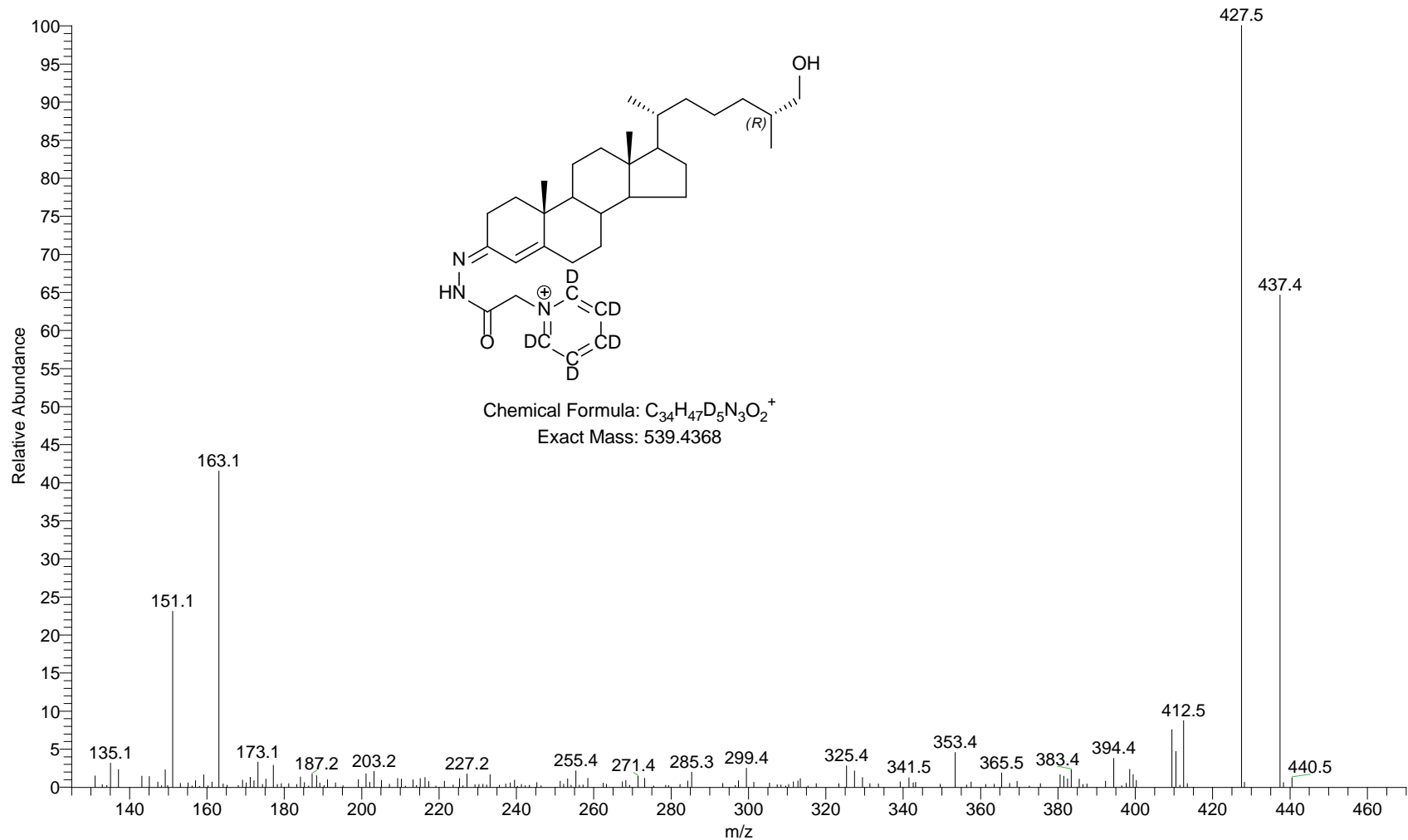
RT: 0.00 - 17.01

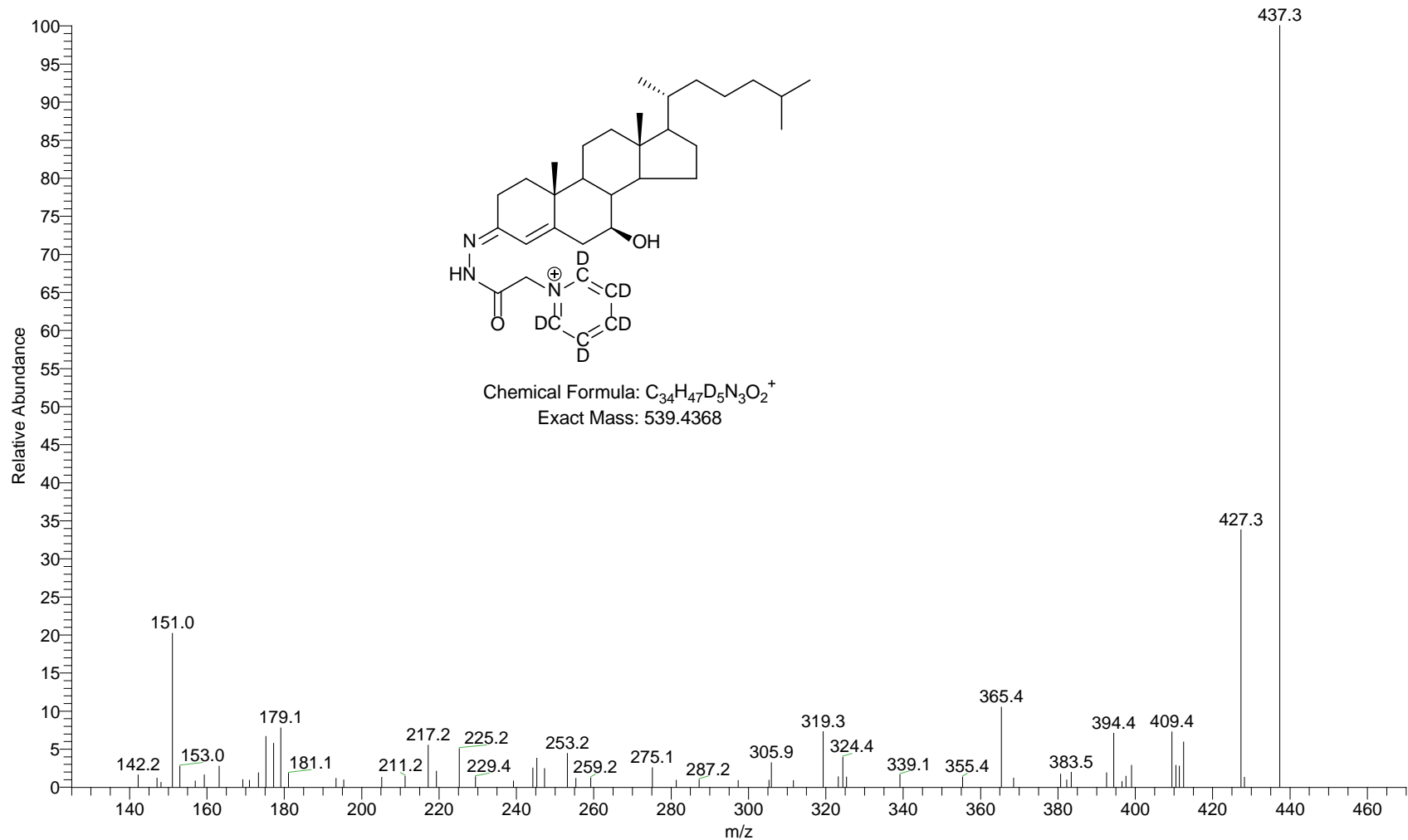


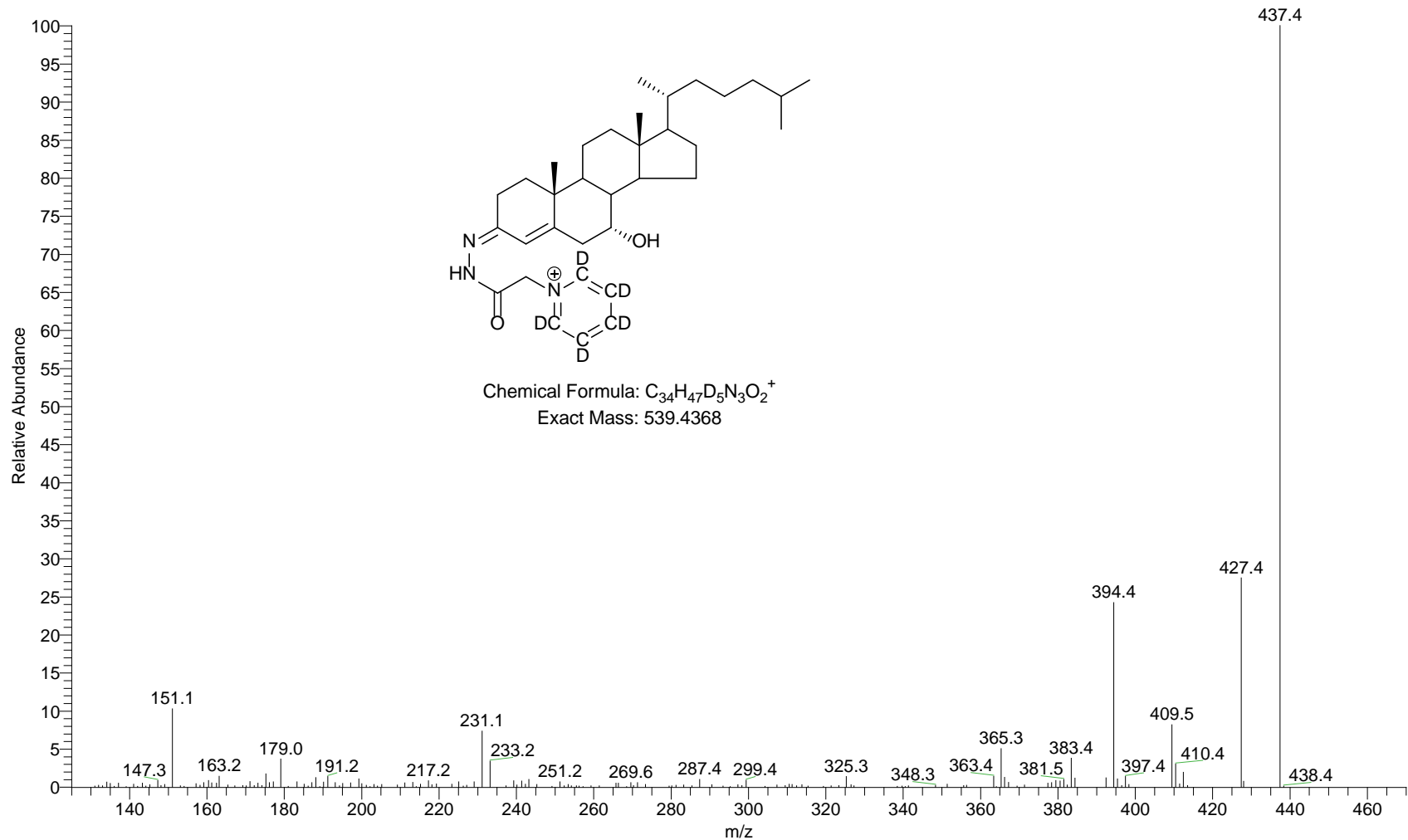




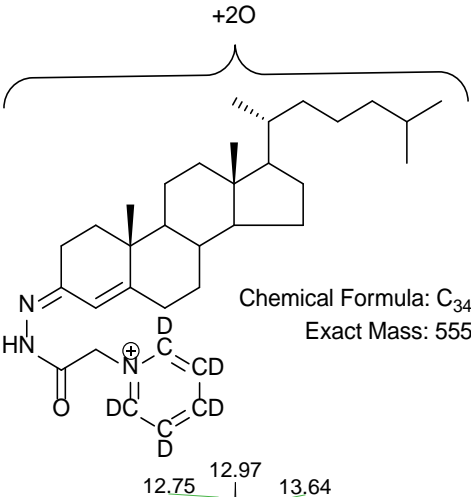
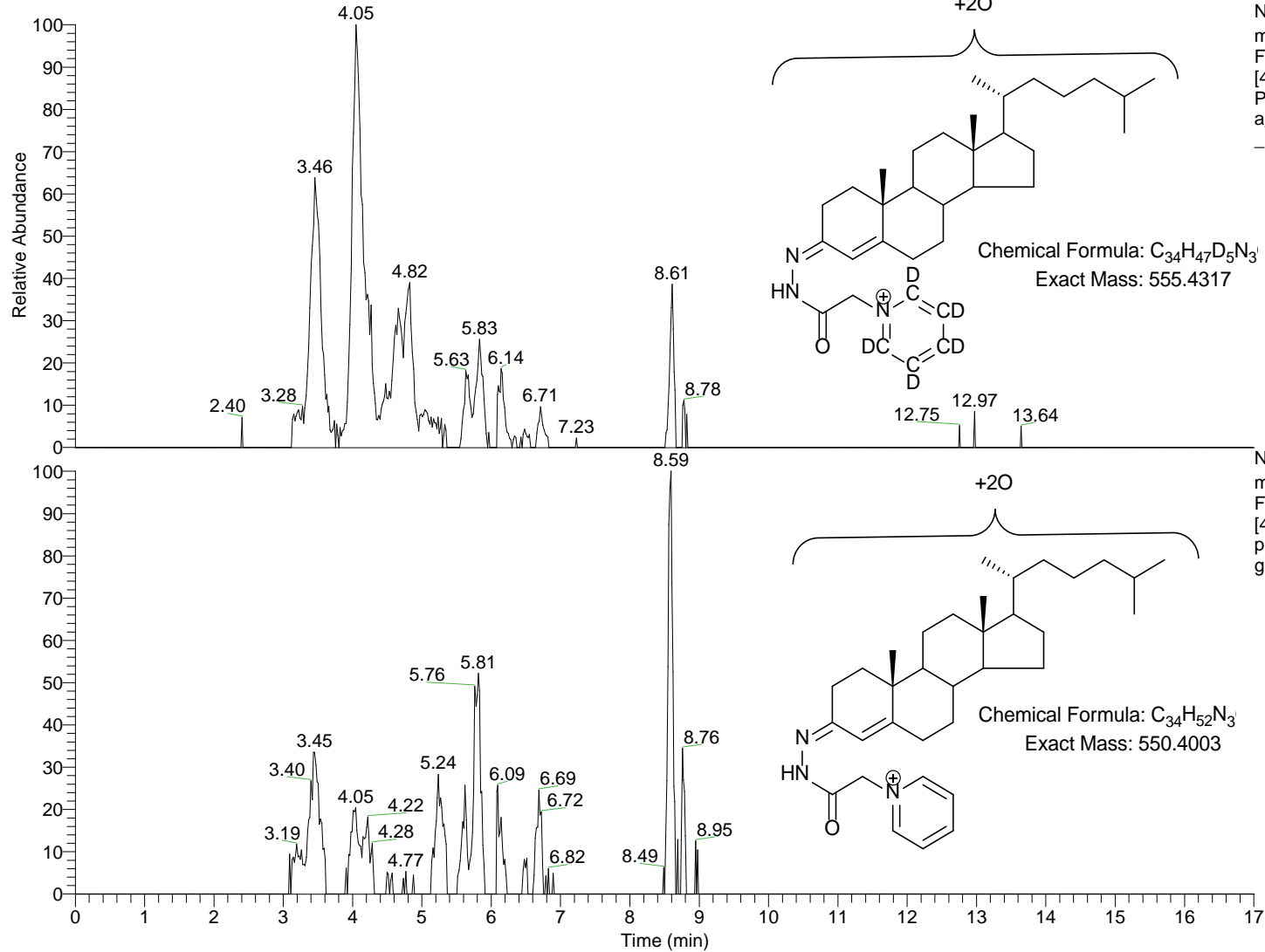




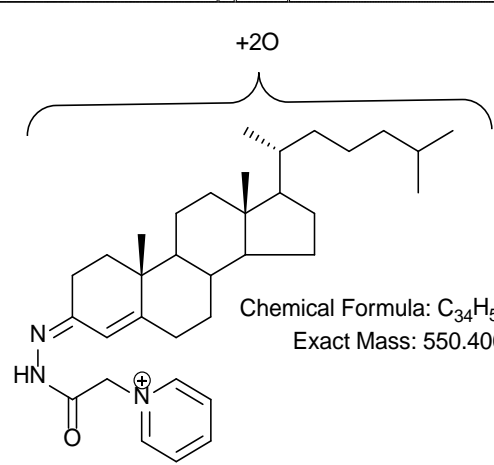




RT: 0.00 - 17.01

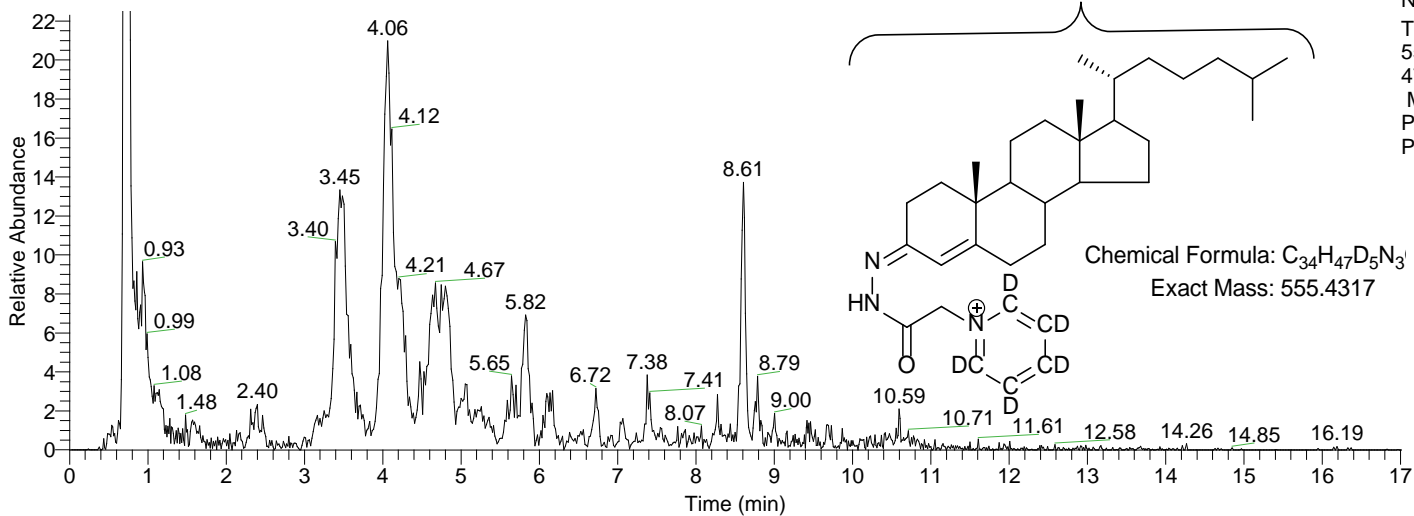


NL: 3.02E3
m/z= 555.4289-555.4345 F:
FTMS + p ESI Full ms
[400.00-610.00] MS
PC_m_plasma_KO_1167_Fr1
a_GPd5_Fr1b_GPd0_120809_06



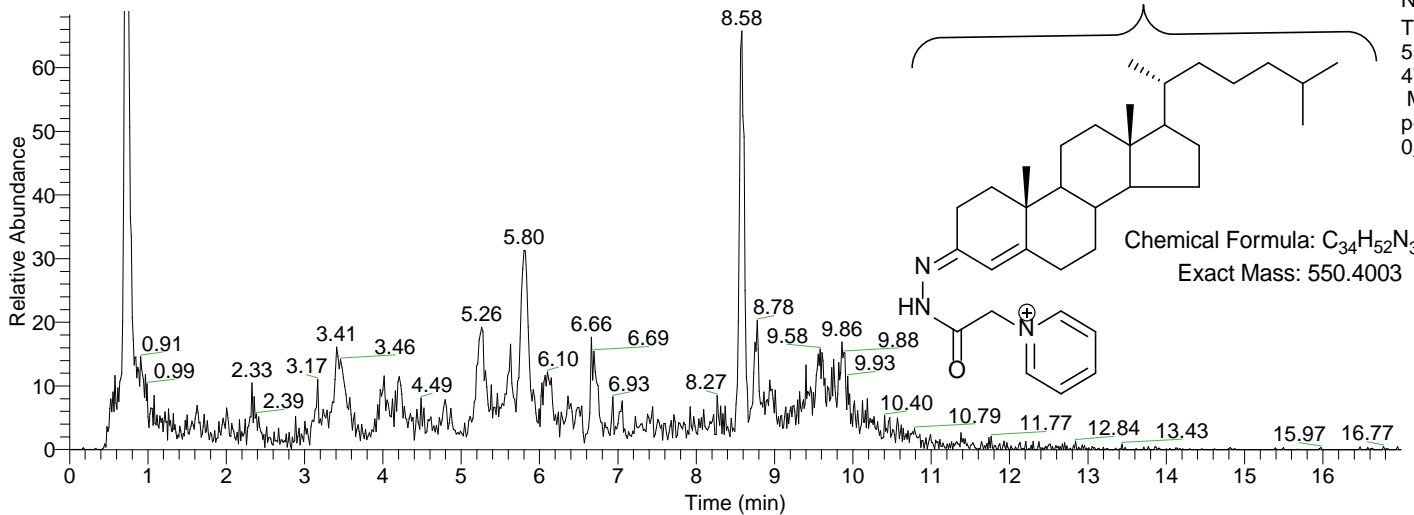
NL: 1.61E3
m/z= 550.3975-550.4031 F:
FTMS + p ESI Full ms
[400.00-610.00] MS
pc_m_plasma_wt_1178_fr1a_gpd0_fr1b_gpd5_120809_06

RT: 0.00 - 17.01

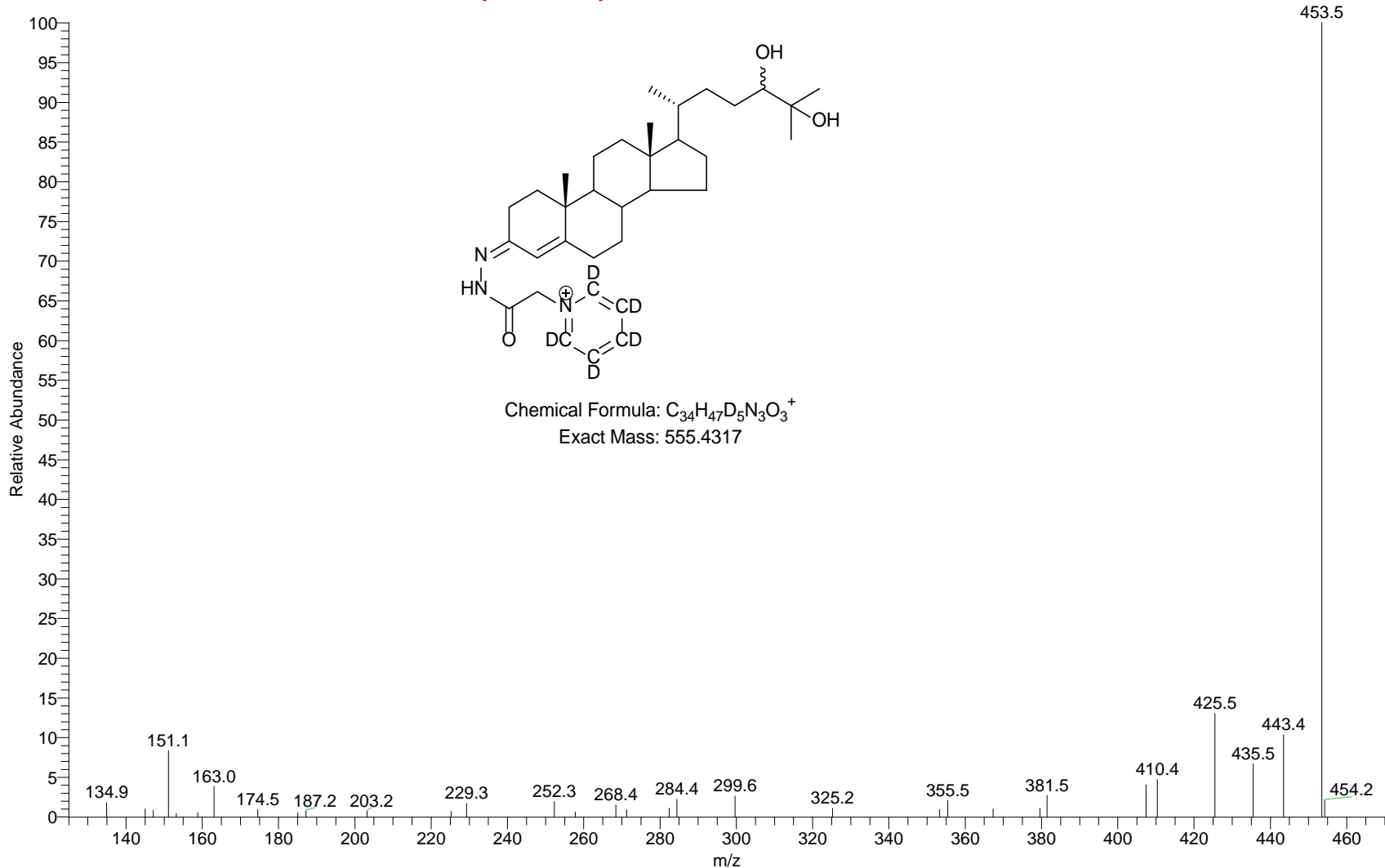


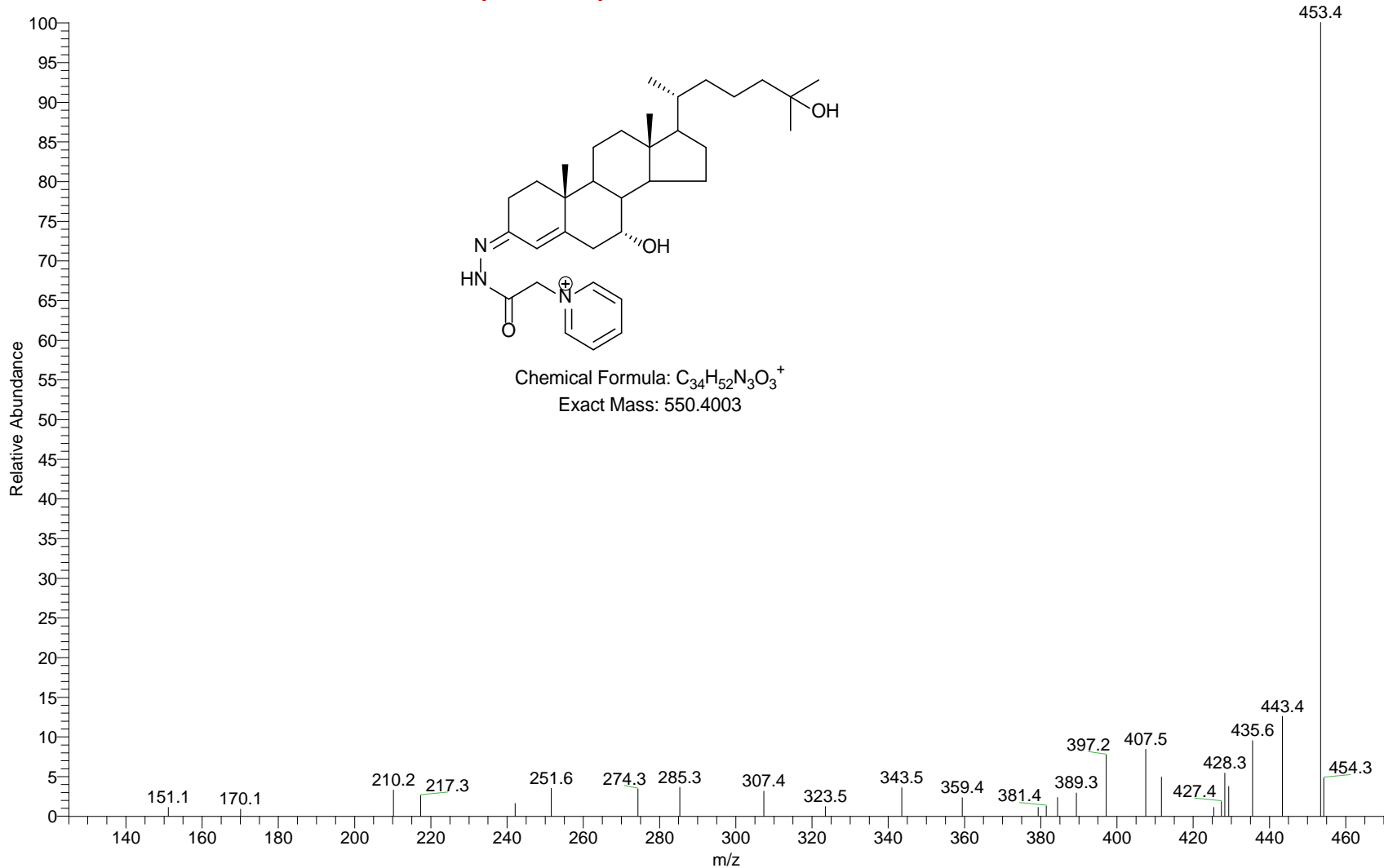
NL: 7.66E3
TIC F: ITMS + c ESI Full ms3
555.43@cid30.00
471.36@cid35.00 [125.00-560.00]
MS
PC_m_plasma_KO_1167_Fr1a_G
Pd5_Fr1b_GPd0_120809_06

RT: 0.00 - 17.00

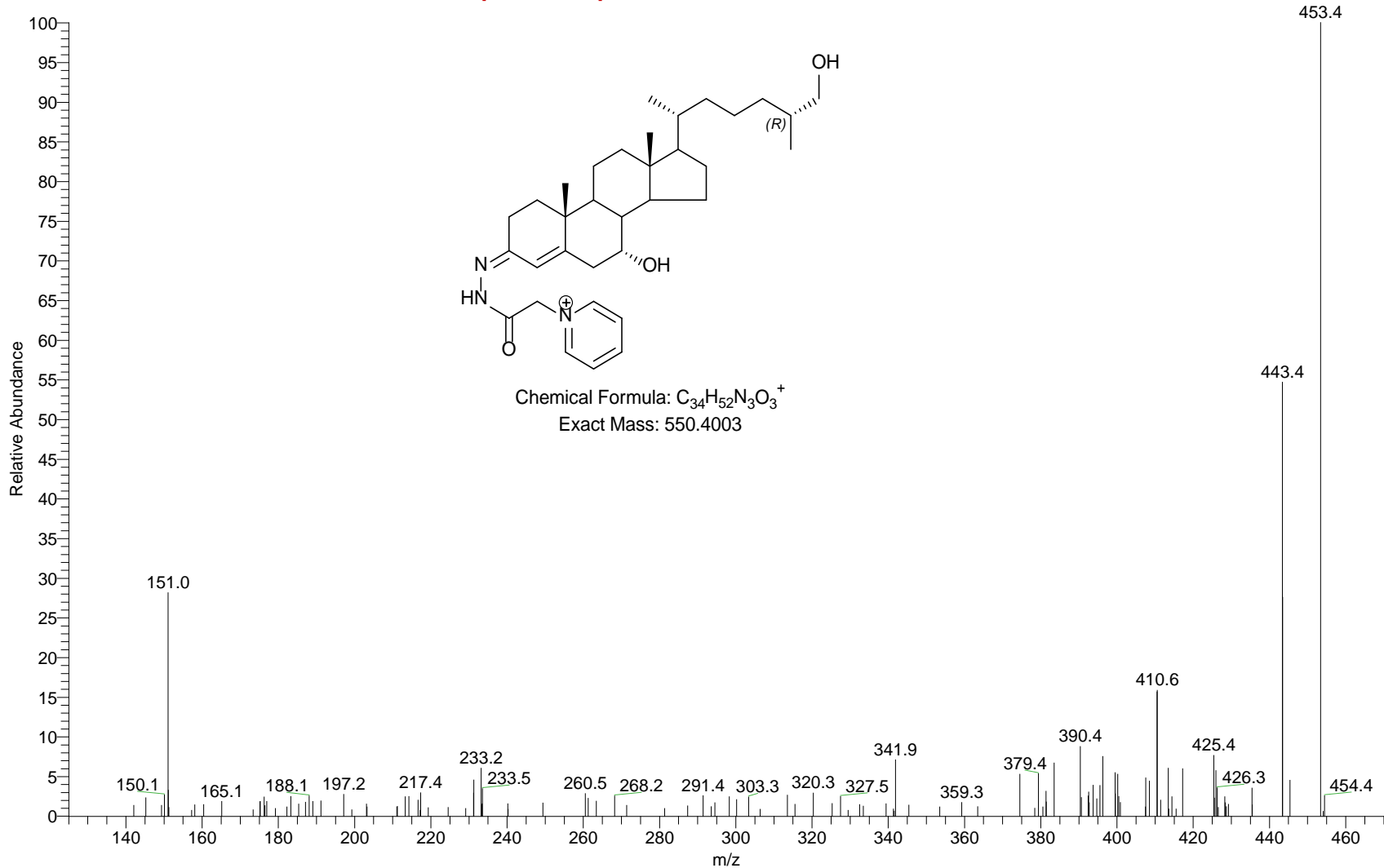


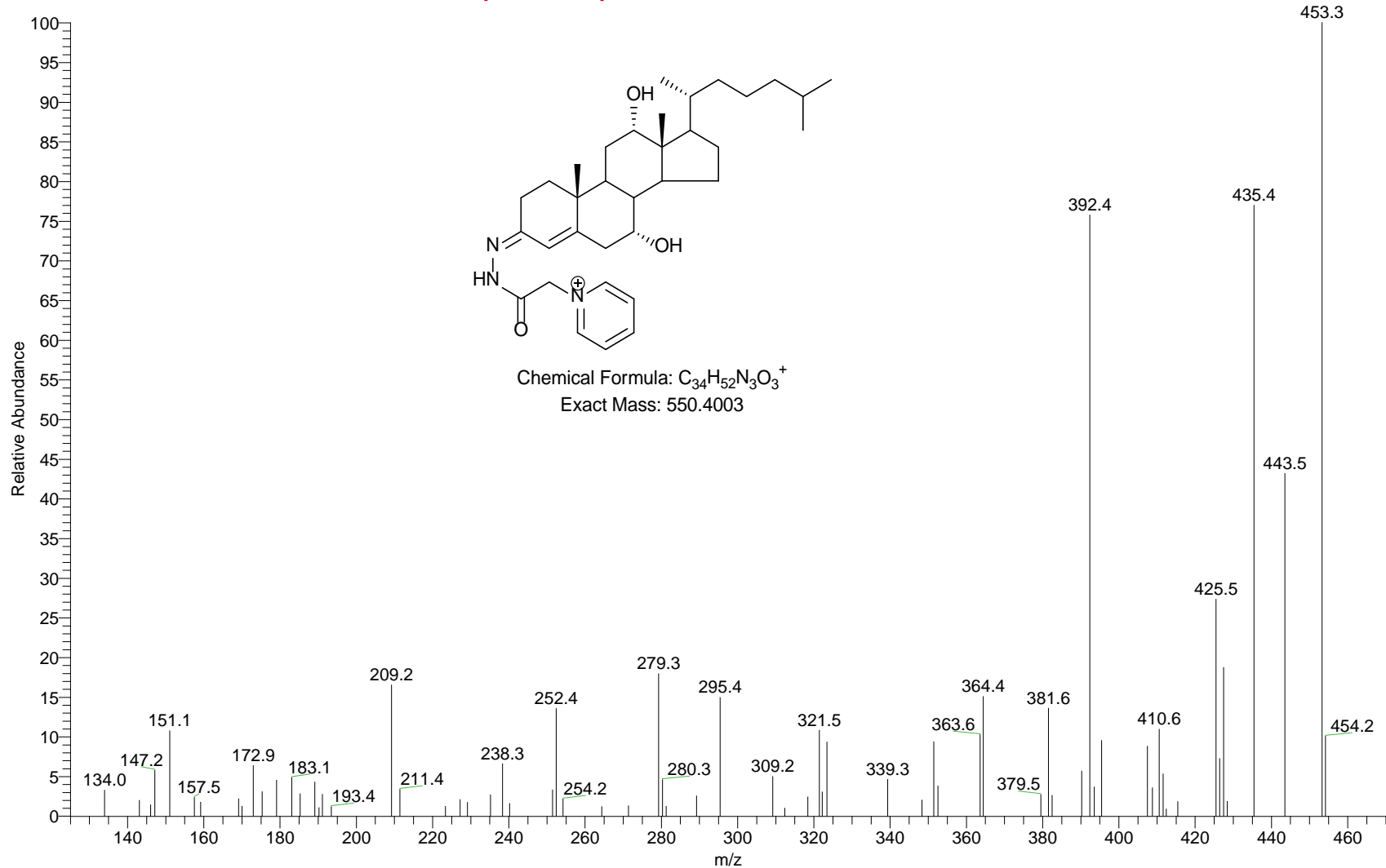
NL: 2.19E3
TIC F: ITMS + c ESI Full ms3
550.40@cid30.00
471.36@cid35.00 [125.00-560.00]
MS
pc_m_plasma_wt_1178_fr1a_gpd
0_fr1b_gpd5_120809_06



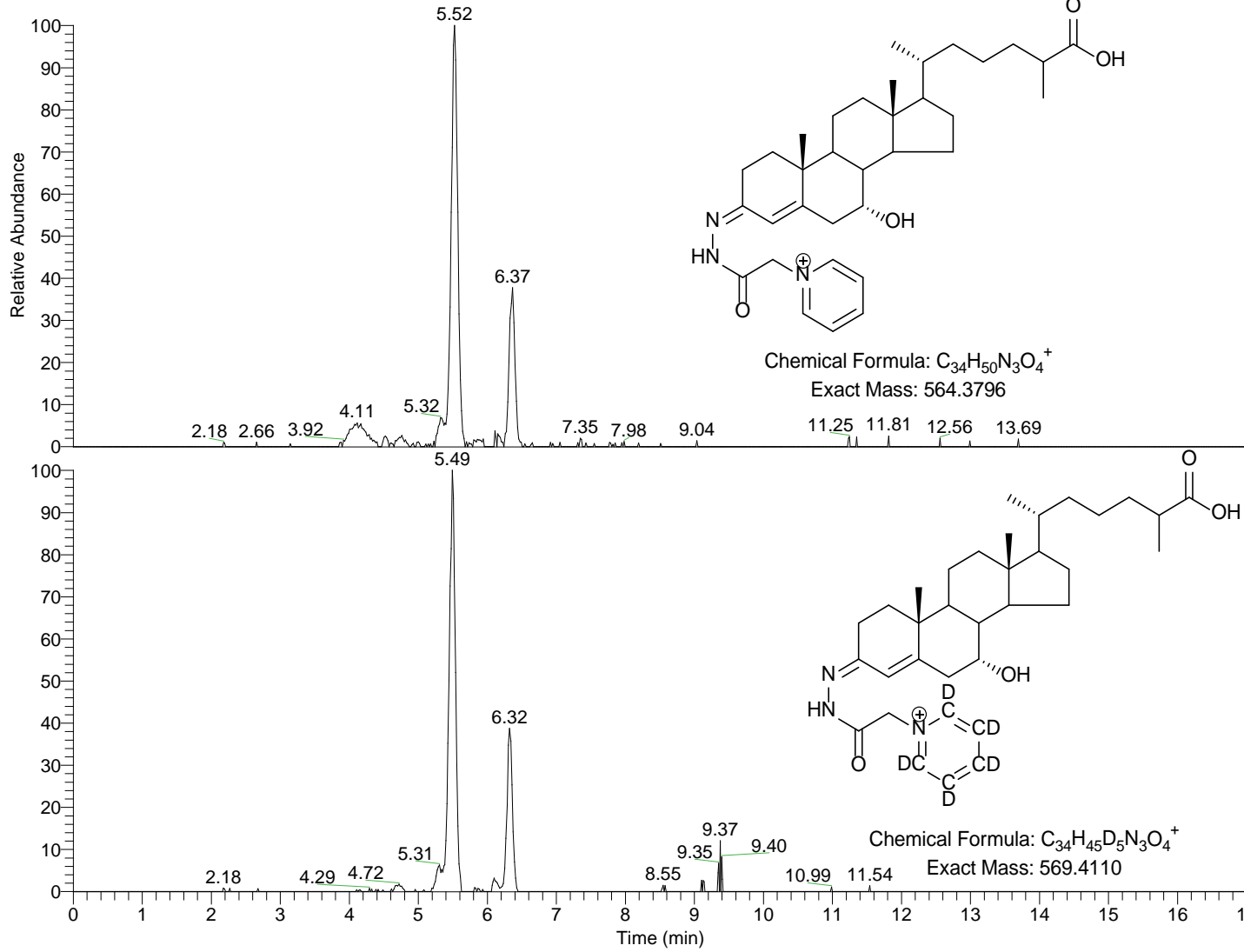


pc_m_plasma_wt_1178_fr1a_gpd0_fr1b_gpd5_120809_06 #1152-1165 RT: 5.77-5.82 AV: 4 NL: 7.36E1
F: ITMS + c ESI Full ms3 550.40@cid30.00 471.36@cid35.00 [125.00-560.00]





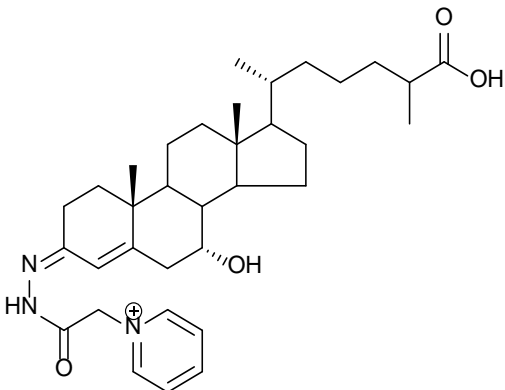
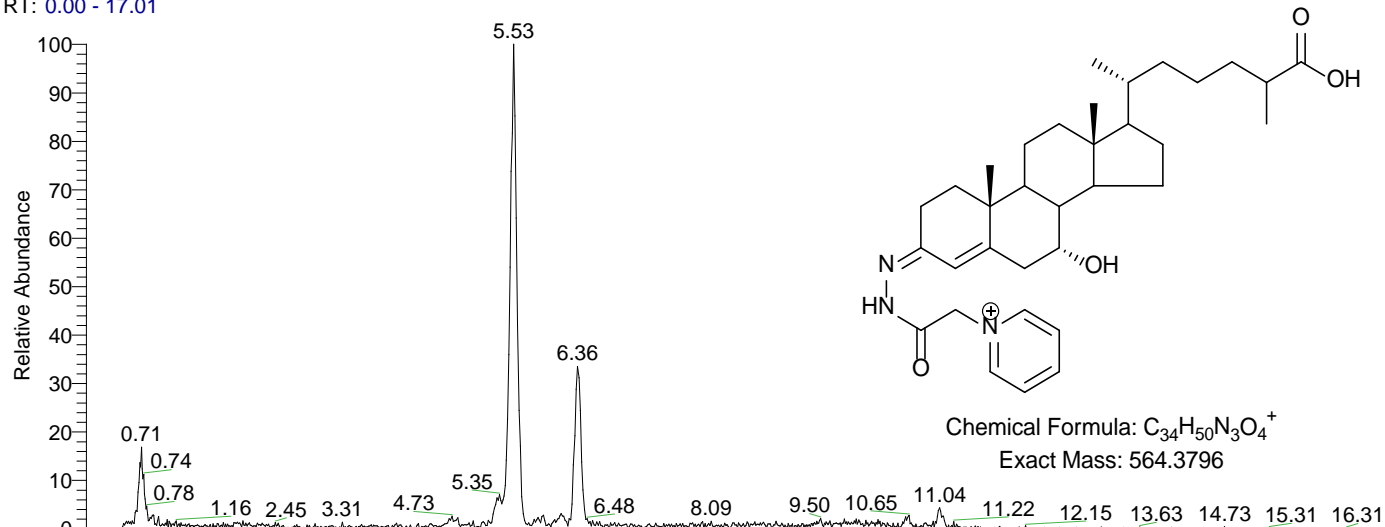
RT: 0.00 - 17.01



NL: 1.11E4
m/z= 564.3768-564.3824 F:
FTMS + p ESI Full ms
[400.00-610.00] MS
PC_m_plasma_KO_1167_Fr1
a_GPd5_Fr1b_GPd0_120809
_07

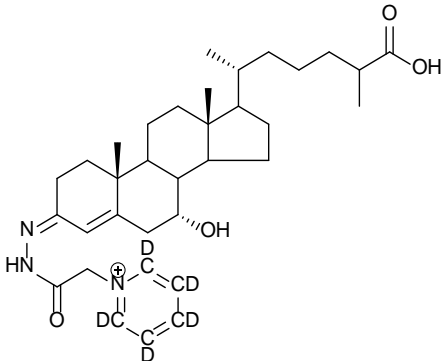
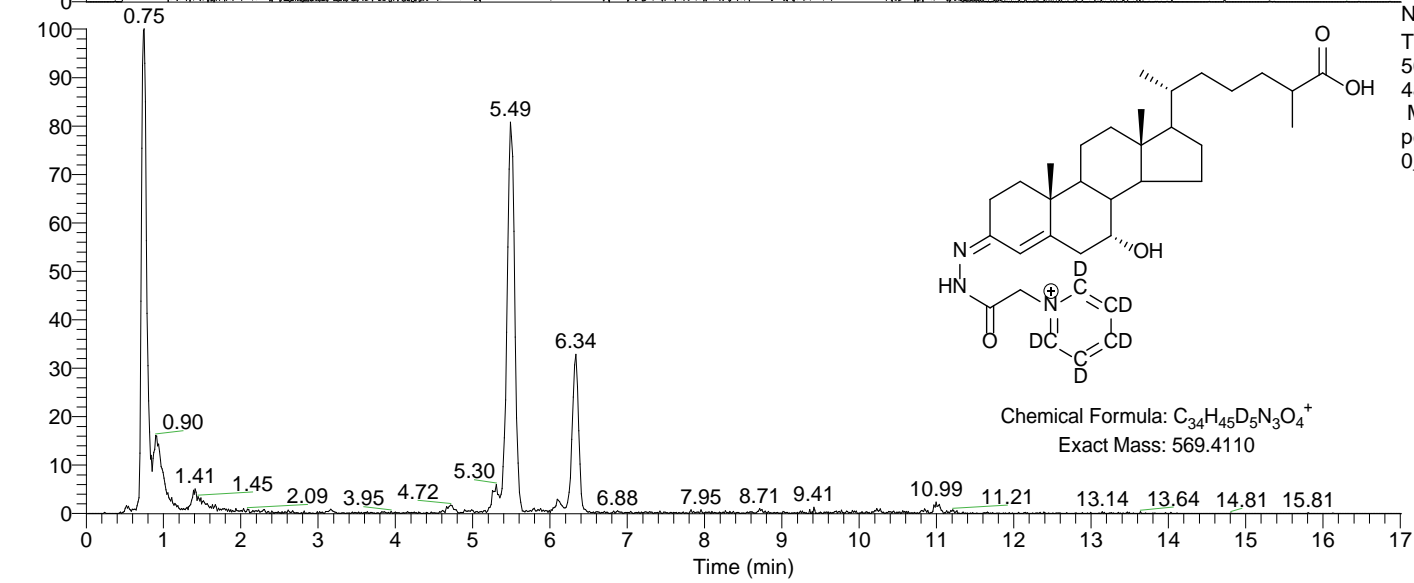
NL: 1.61E4
m/z= 569.4082-569.4138 F:
FTMS + p ESI Full ms
[400.00-610.00] MS
pc_m_plasma_wt_1178_fr1a
gpd0_fr1b_gpd5_120809_07

RT: 0.00 - 17.01



Chemical Formula: $C_{34}H_{50}N_3O_4^+$
Exact Mass: 564.3796

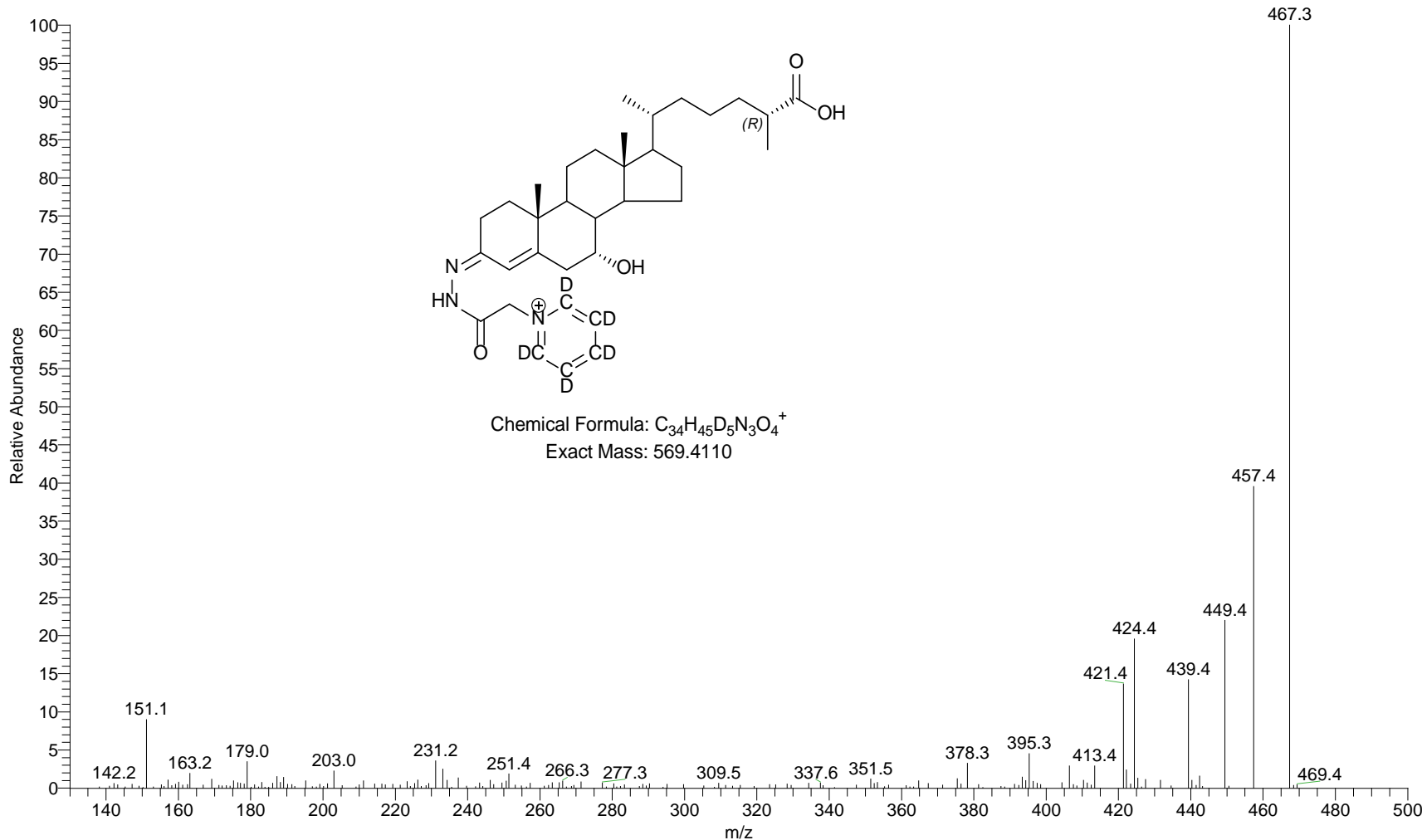
NL: 6.76E3
TIC F: ITMS + c ESI Full ms3
564.38@cid30.00
485.34@cid35.00 [130.00-575.00]
MS
PC_m_plasma_KO_1167_Fr1a_G
Pd5_Fr1b_GPd0_120809_07



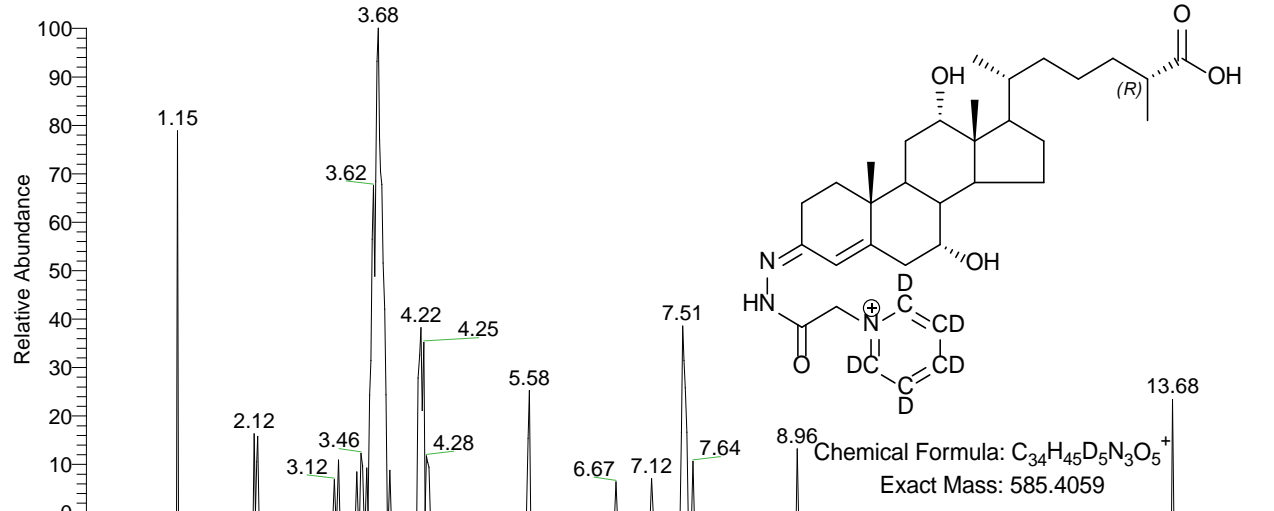
Chemical Formula: $C_{34}H_{45}D_5N_3O_4^+$
Exact Mass: 569.4110

NL: 1.08E4
TIC F: ITMS + c ESI Full ms3
569.41@cid30.00
485.34@cid35.00 [130.00-575.00]
MS
pc_m_plasma_wt_1178_fr1a_gpd
0_fr1b_gpd5_120809_07

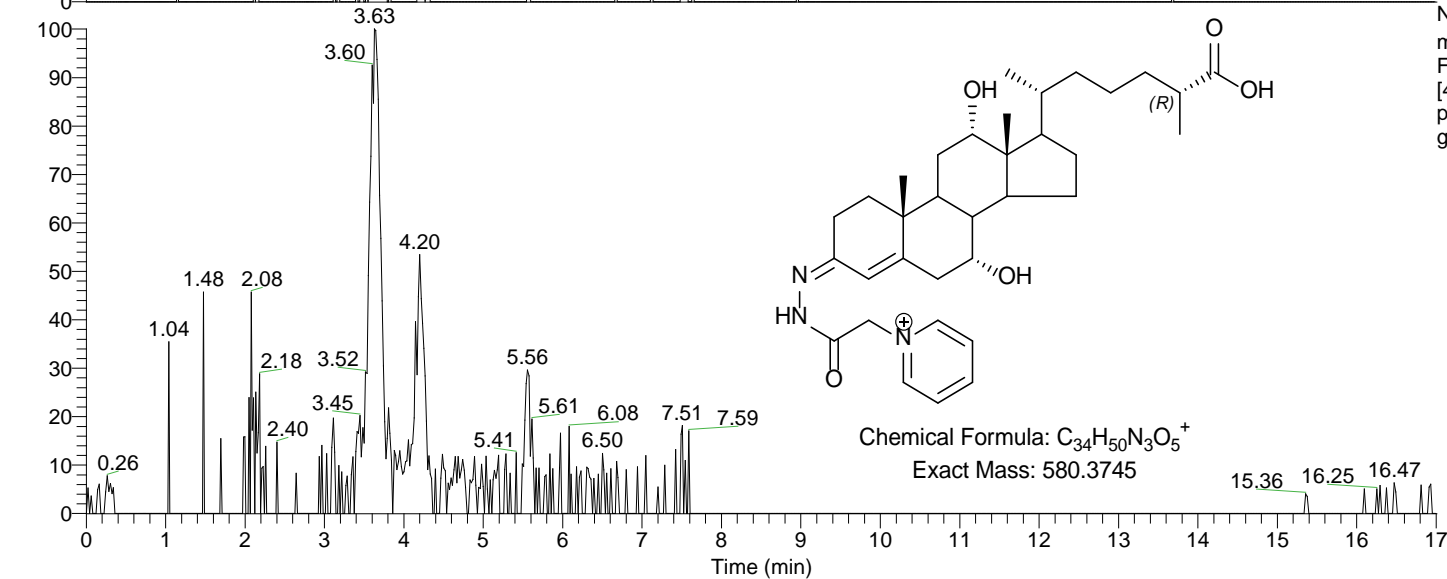
pc_m_plasma_wt_1178_fr1a_gpd0_fr1b_gpd5_120809_07 #1110 RT: 5.49 AV: 1 NL: 2.69E3
F: ITMS + c ESI Full ms3 569.41 @cid30.00 485.34 @cid35.00 [130.00-575.00]



RT: 0.00 - 17.01

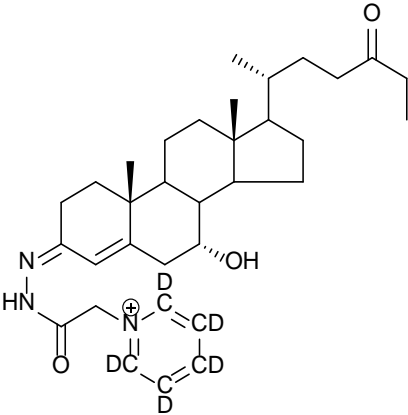
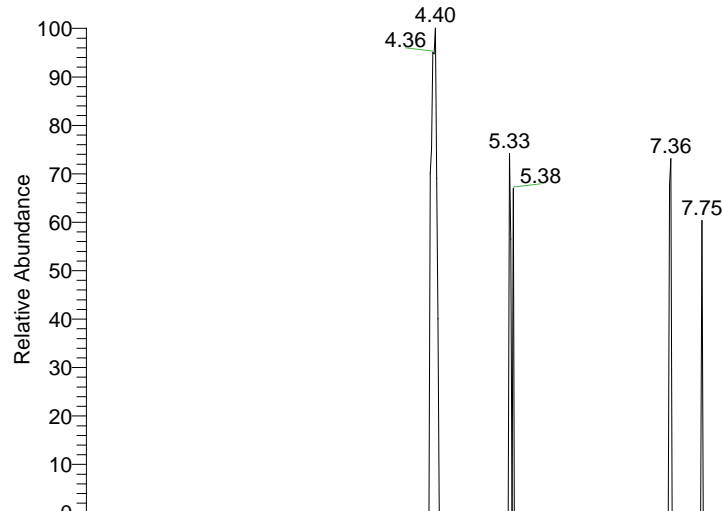


NL: 8.94E2
m/z= 585.4030-585.4088 F:
FTMS + p ESI Full ms
[400.00-610.00] MS
PC_m_plasma_KO_1167_Fr1
a_GPd5_Fr1b_GPd0_120809
_03

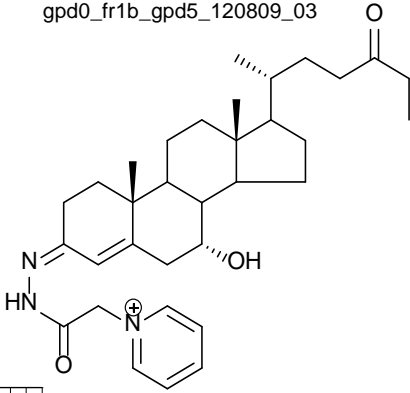
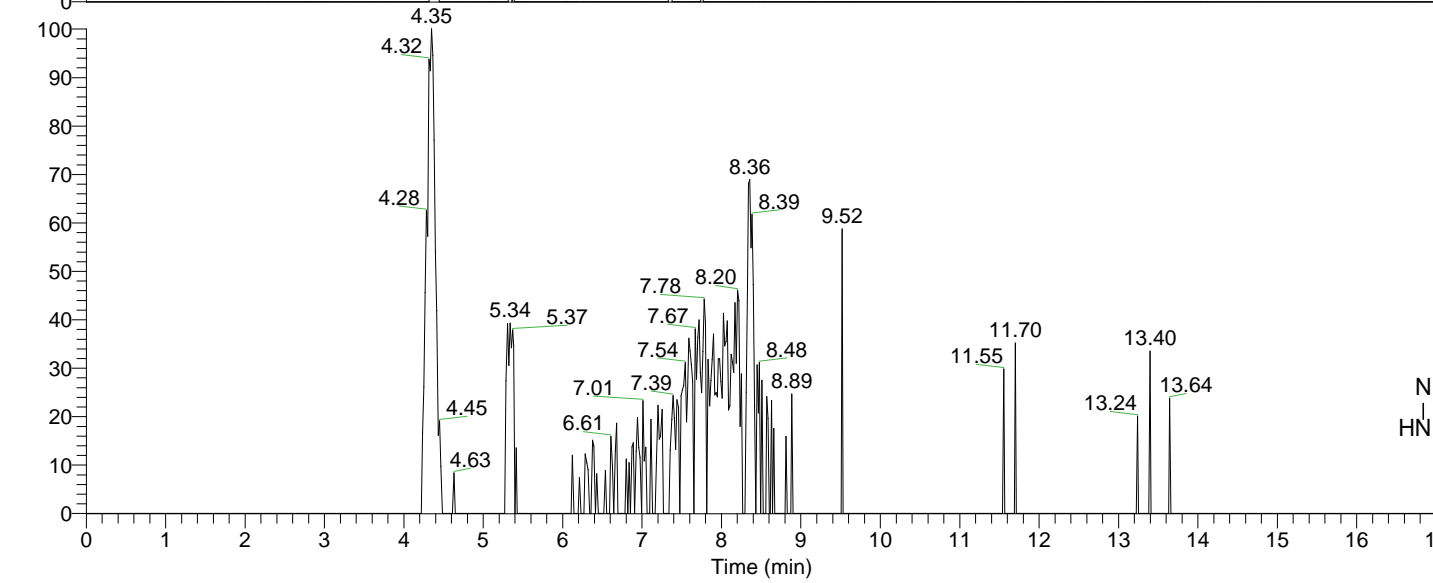


NL: 1.07E3
m/z= 580.3716-580.3774 F:
FTMS + p ESI Full ms
[400.00-610.00] MS
pc_m_plasma_wt_1178_fr1a_gpd0_fr1b_gpd5_120809_03

RT: 0.00 - 17.01



NL: 1.67E2
m/z= 539.3977-539.4031 F:
FTMS + p ESI Full ms
[400.00-610.00] MS
PC_m_plasma_KO_1167_Fr1
a_GPd5_Fr1b_GPd0_120809
_03



NL: 6.99E2
m/z= 534.3663-534.3717 F:
FTMS + p ESI Full ms
[400.00-610.00] MS
pc_m_plasma_wt_1178_fr1a_gpd0_fr1b_gpd5_120809_03

pc_m_plasma_wt_1178_fr1a_gpd0_fr1b_gpd5_120809_03 #884 RT: 4.31 AV: 1 NL: 1.48E2
F: ITMS + c ESI Full ms3 534.41 @cid30.00 455.36 @cid35.00 [125.00-545.00]

