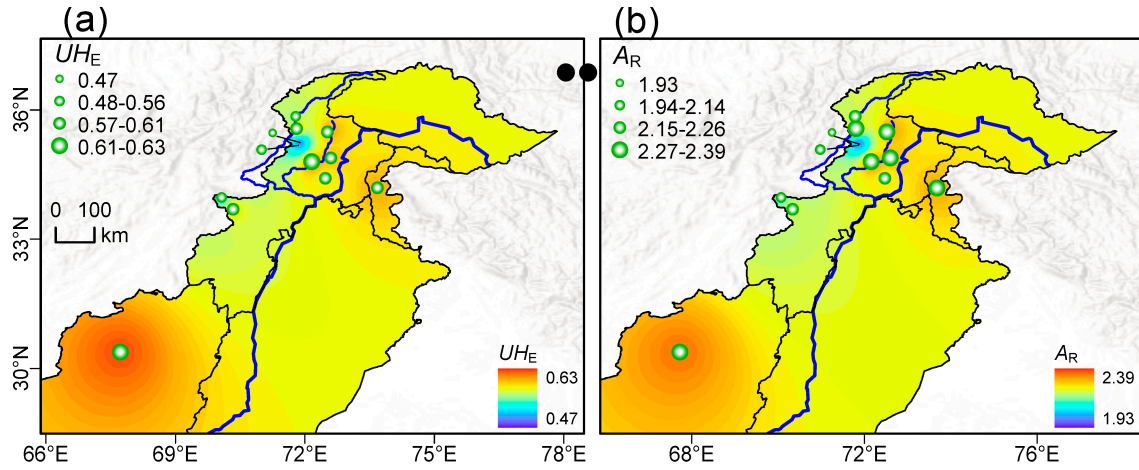
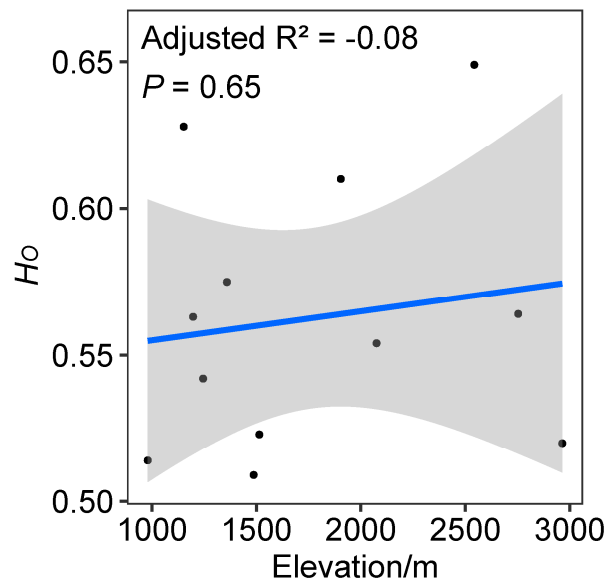


**Figure S1.** Correlation of geographic distance (in kilometers) and genetic distance (pairwise  $F_{ST}$ ) among 12 populations of *J. regia*, including regression line ( $r = 0.14$ ,  $p = 0.22$  at 1000 randomization).



**Figure S2.** Spatial genetic diversity of 12 populations of Pakistan walnut: (a) Unbiased expected heterozygosity ( $U_{He}$ ), (b) allelic richness ( $A_R$ ).



**Figure S3.** Relationship between observed heterozygosity and elevation for 12 populations of walnut in Pakistan.