

Supplementary material 03

Authors: Silvia Ulrich, Manuel Vieira, Mario Coiro, Johannes M. Bouchal, Christian Geier, Bonnie F. Jacobs, Ellen D. Currano, Olaf K. Lenz, Volker Wilde, Reinhard Zetter, Friðgeir Grímsson

Article title: Origin and early evolution of Hydrocharitaceae and the ancestral role of *Stratiotes*

Content: Additional LM, SEM, and TEM micrographs of *Stratiotes aloides* pollen

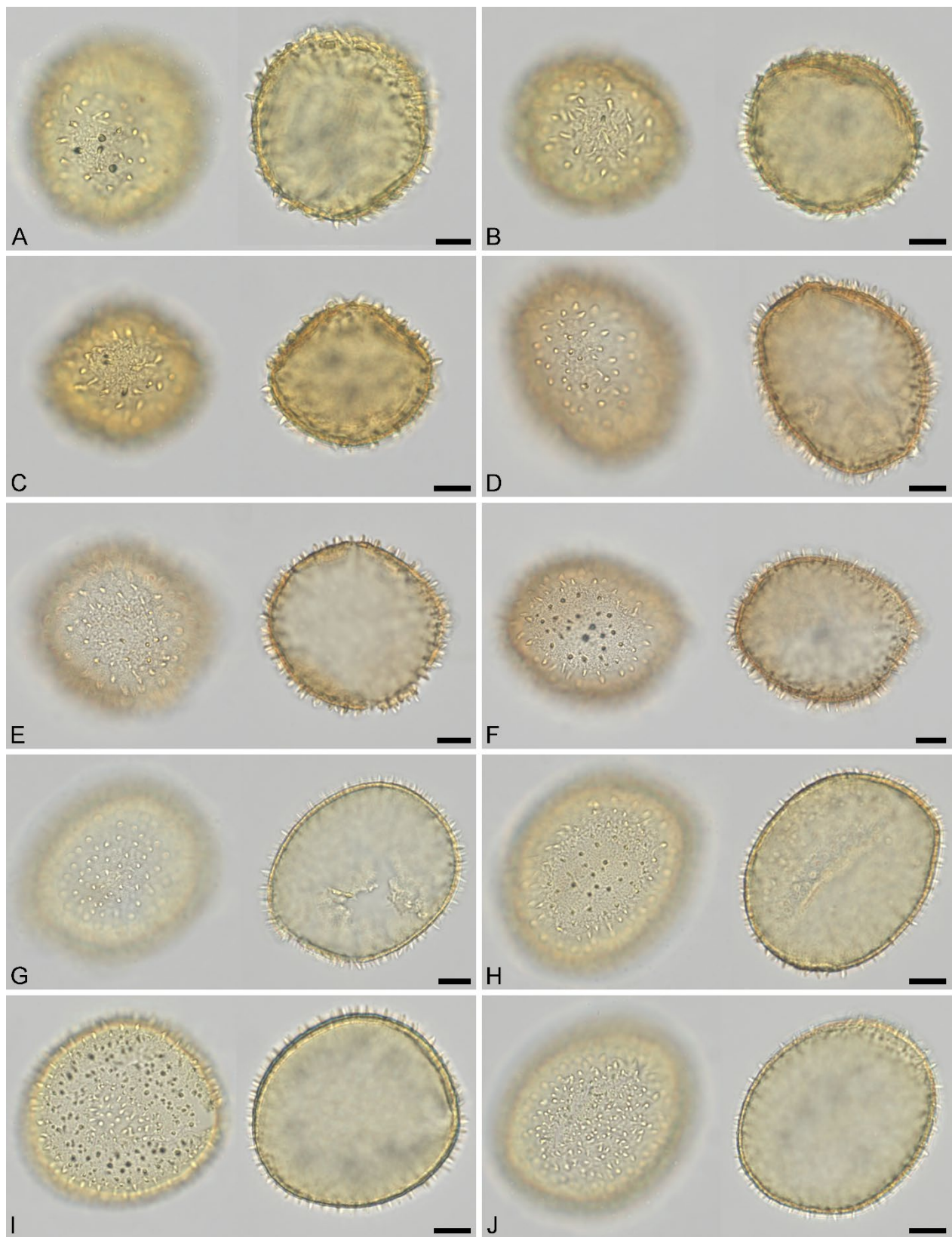


Plate S1. *Stratiotes aloides* pollen from herbaria specimens. LM micrographs. **A–C.** WU0152793. **D–F.** WU0152794. **G–J.** WU0152795. Scale bars – 10 μ m (A–J).

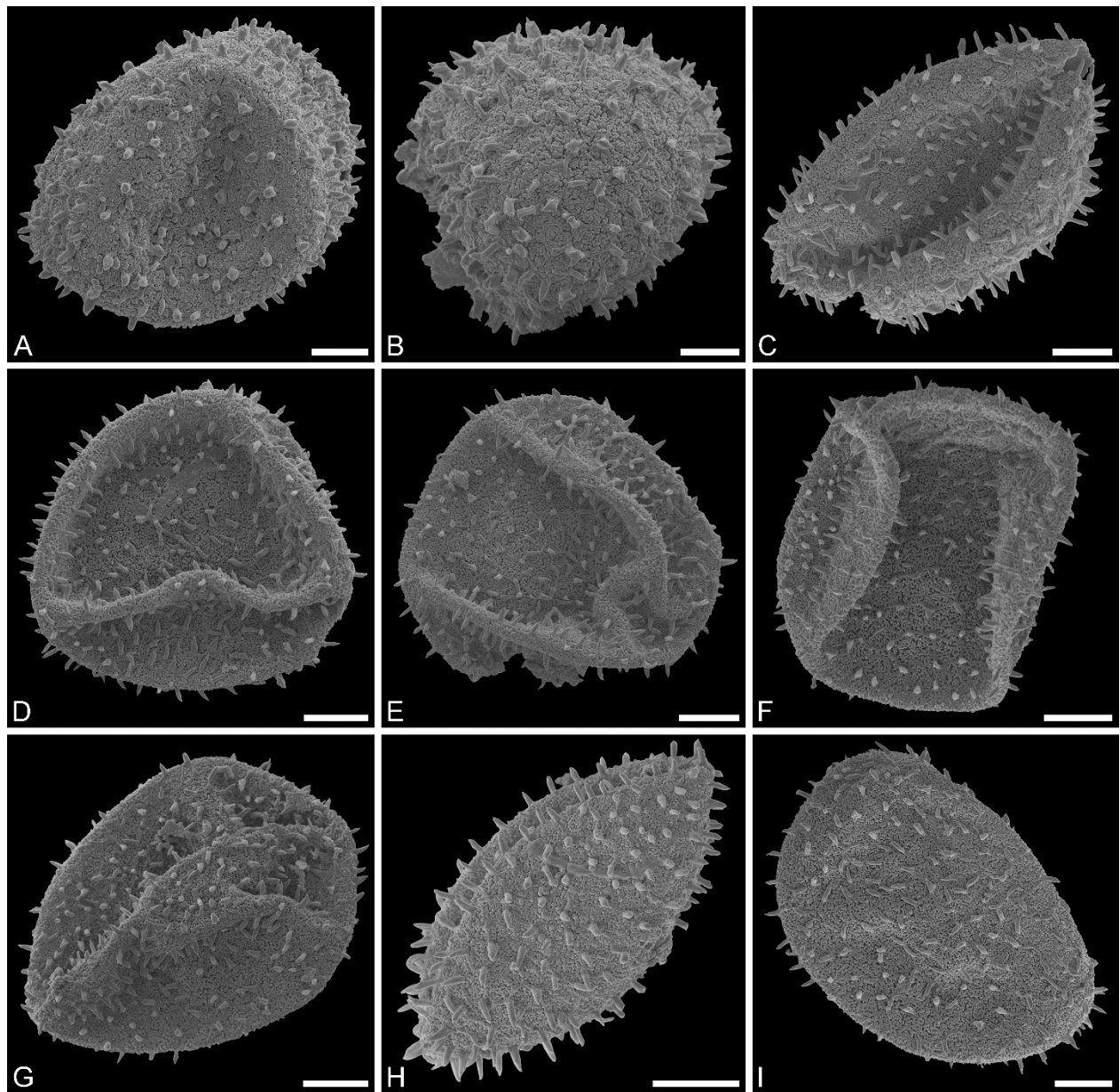


Plate S2. *Stratiotes aloides* L. pollen from herbaria specimens. SEM micrographs. **A, B.** WU0152793. **C.** WU0152794. **D–I.** WU0152795. Scale bars – 10 μm (A–I).

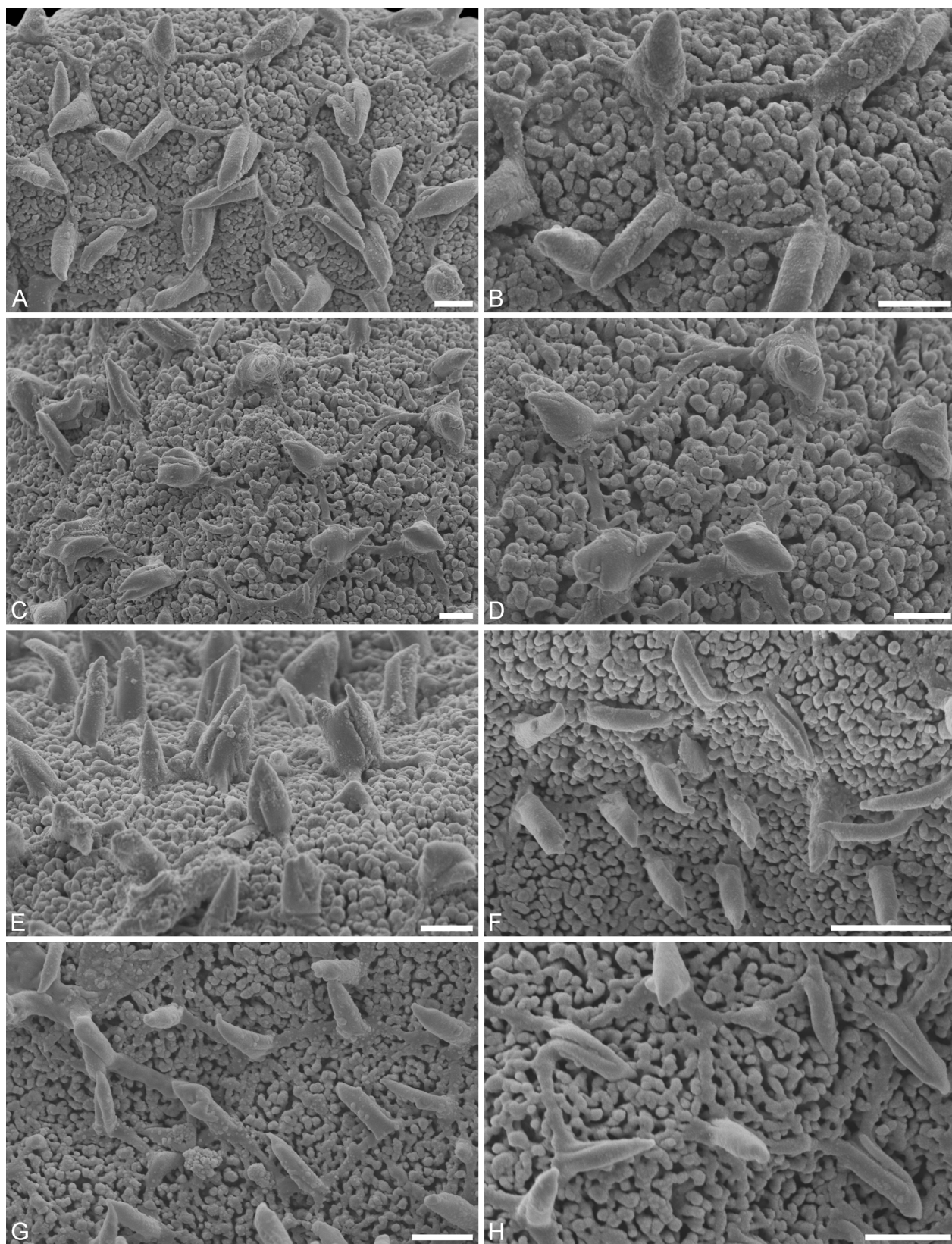


Plate S3. *Stratiotes aloides* L. pollen from herbaria specimens. SEM micrographs of surface sculpture. **A–E.** WU0152793. **F.** WU0152794. **G–H.** WU0152795. Scale bars – 2 μm (A–H).

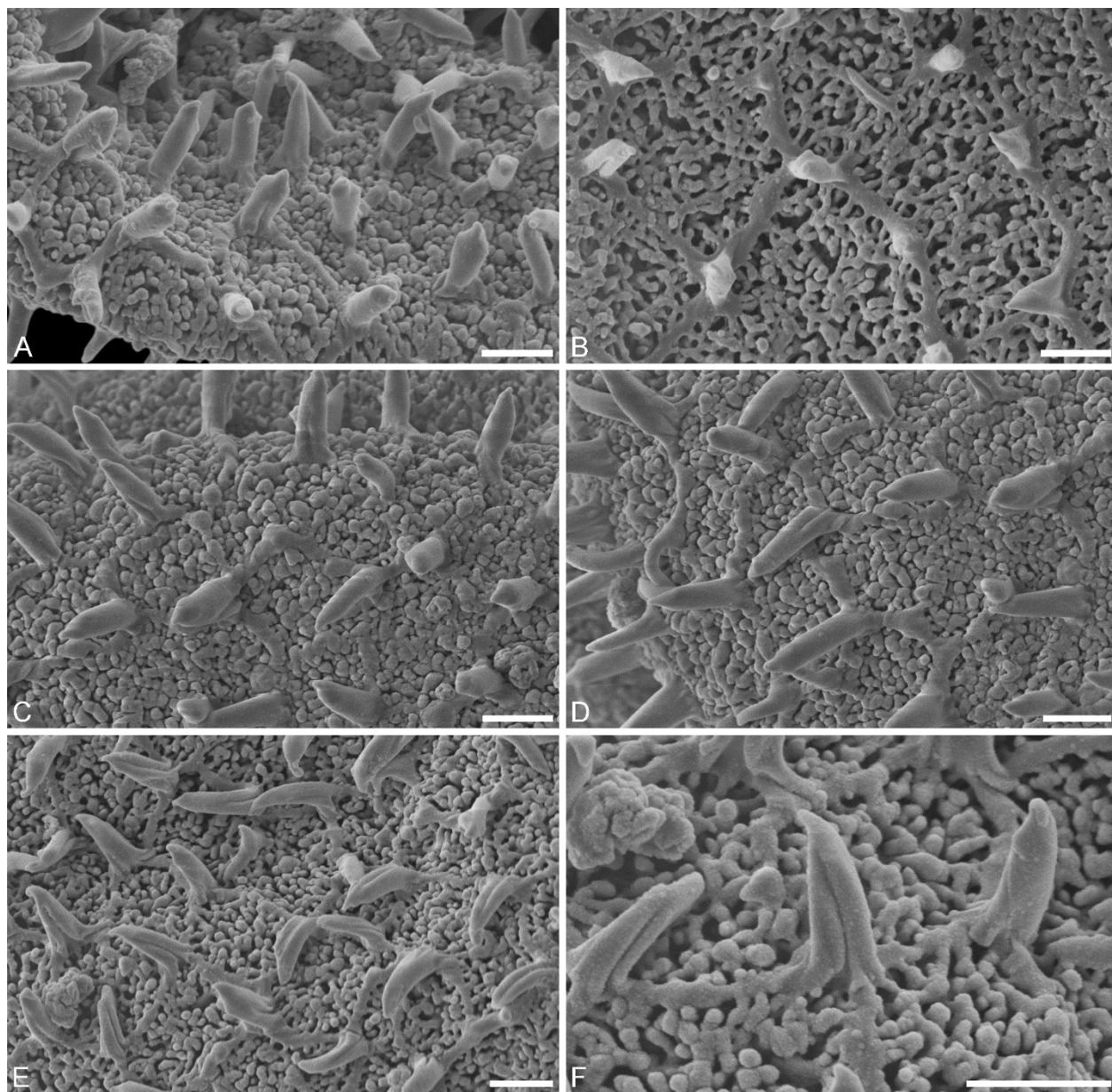


Plate S4. *Stratiotes aloides* L. pollen from herbaria specimens. SEM micrographs of surface sculpture. A–F. WU0152795. Scale bars – 2 μm (A–F).