

Table S1. Target siRNA sequences

NO	siRNA	Sequence		Molecular weight
1	SNHG4_1	Sense	CAUCCUUCACCCAUCUGAAUU	6178
		Antisense	UUCAGAUAGGGUGAAGGAUGUU	6458.2
2	SNHG4_2	Sense	CAUCUGAAGGGAGGAAAUAUU	6448.2
		Antisense	UAUUUCCUCCCUUCAGAUGUU	6173
3	SNHG4_3	Sense	GUCUUCUUGUCAUGUAGGUUU	6270
		Antisense	ACCUACAUGACAAGAAGACUU	6351.2
4	SNHG4_4	Sense	GUCAUGUAGGUCCCAAUAUU	6299.1
		Antisense	UAAUUGGGACCUACAUGACUU	6322.1
5	SNHG4_5	Sense	CAAUCUCGGCUCACUACAAUU	6241.1
		Antisense	UUGUAGUGAGCCGAGAUUGUU	6395.2
6	SP-1_1	Sense	GCCUAAUAUUCAGUAUCAUU	6267.1
		Antisense	UUGAUACUGAAUAUUAGGCUU	6324.1
7	SP-1_2	Sense	GGUCAAUAACAGAUCAUACUU	6329.2
		Antisense	GUAUGAUCUGUAUUUGACCUU	6277.1
8	SP-1_3	Sense	CAAUAGCUACUCAACUACUUU	6226.1
		Antisense	AGUAGUUGAGUAGCUAUUGUU	6380.2
9	SP-1_4	Sense	GCAACAUGGGAAUUAUGAAUU	6409.2
		Antisense	UUCAUAAUUCCTCAUGUUGCUU	6197
10	SP-1_5	Sense	CCCUUAUUACCACCAUAUUU	6163
		Antisense	AUAUUGGUGGUAAUAAGGGUU	6443.2
11	Control	Sense	CCUCGUGCCGUUCCAUCAGGUAGUU	7487.7
		Antisense	CUACCUGAUGGAACGGCACGAGGUU	7636.9

Table S2. Real-time PCR target primer sequences

		sequence 5' - 3'
E-cadherin	Forward	ATTCTGATTCTGCTGCTCTTG
	Reverse	AGTAGTCATAGTCCTGGTCCT
N-cadherin	Forward	CCCAAGACAAAGAGACCCAG
	Reverse	GCCACTGTGCTTACTGAATTG
β -catenin	Forward	TGCAGTTCGCCTTCACTATG
	Reverse	ACTAGTCGTGGAATGGCACC
Wnt5 β	Forward	TGTGAGGTGAAGACCTGCTG
	Reverse	AAAGTTGGGGGAGTTCTCGT
SNHG4	Forward	GCAGGTGACAGTCTGCATGT
	Reverse	AAGAAGCTGTCATGGCCAAC
SP-1	Forward	CTGGTGGGCAGTATGTTGTG
	Reverse	TTGGTTTGCACCTGGTATGA

Table S3. Clinicopathologic factors in benign Endometrial serum and Endometrial cancer serum samples.

Factor	n (%)	Low	High	P-value ^a
Age (mean±SD)	100	51.14±8.86	53.64±10.45	0.553
Cell type				
Type I				
Endometrioid adenocarcinoma	100	27	73	0.00001
Stage				0.855
I	64	18	46	
II	9	2	7	
III	22	5	16	
IV	5	2	3	
Grade				0.284
I	47	14	33	
II	30	5	25	
III	23	8	15	
Lymphnode metastasis				0.711
Yes	21	5	16	
No	79	22	57	
Lymphatic invasion				0.202
Yes	32	6	26	
No	68	21	47	
Tumor size				0.776
<2cm	32	10	22	
2_4	38	10	28	
≥4cm	30	7	23	
Recur				0.886
Yes	14	4	10	
No	86	23	63	
BMI				0.729
25>	49	25	35	
25<	51	13	38	

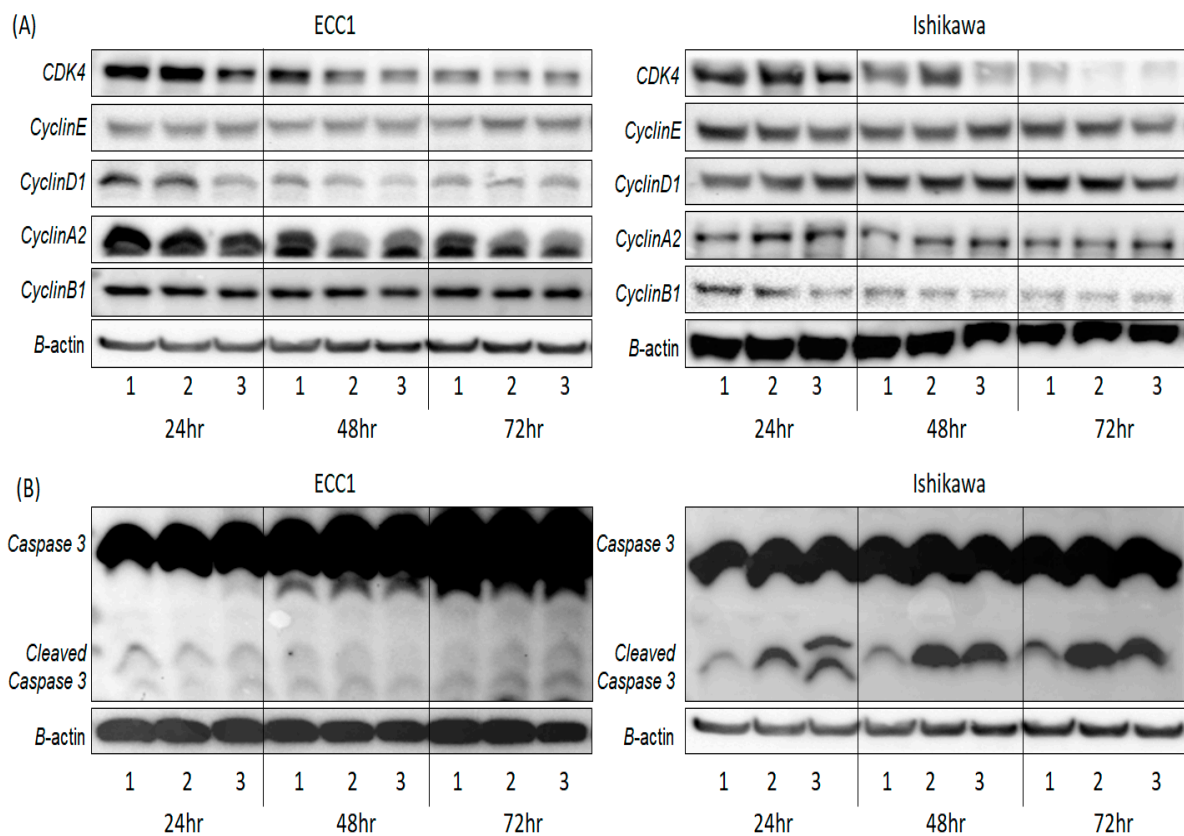


Figure S1. Western blot analysis of cell cycle regulatory marker(A) and apoptosis marker(B) following siSNHG4 treatment of endometrial cancer cells. 1: control 2: siSNHG4_3 3: siSNHG4_4

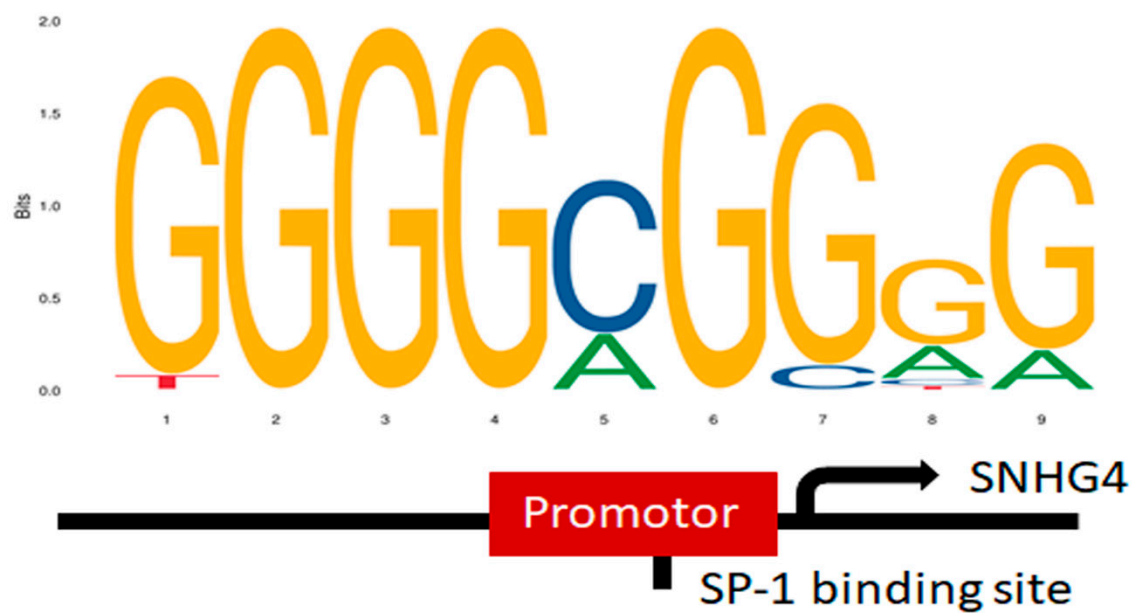


Figure S2. SP-1 binding site using JASPAR database.

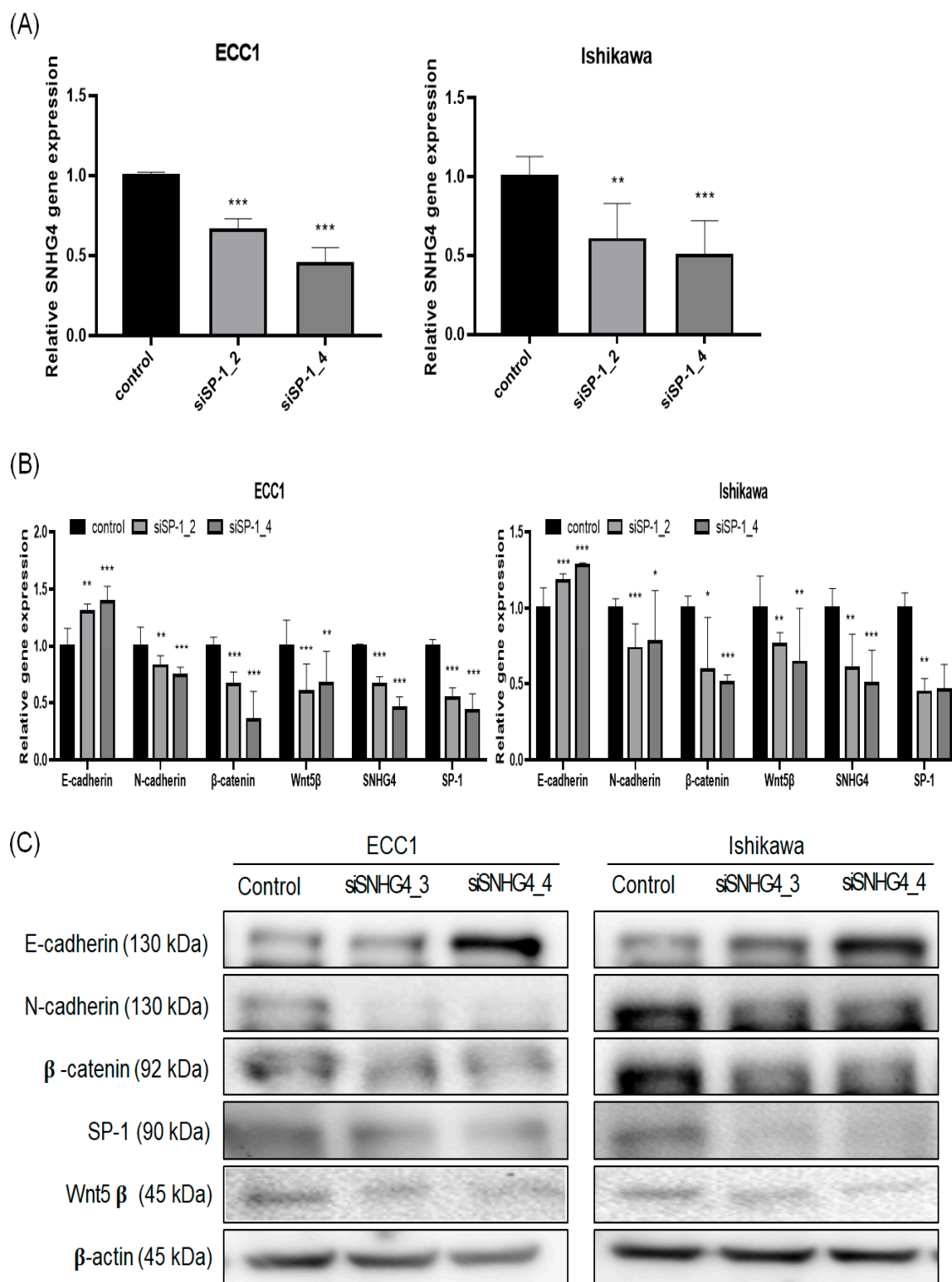
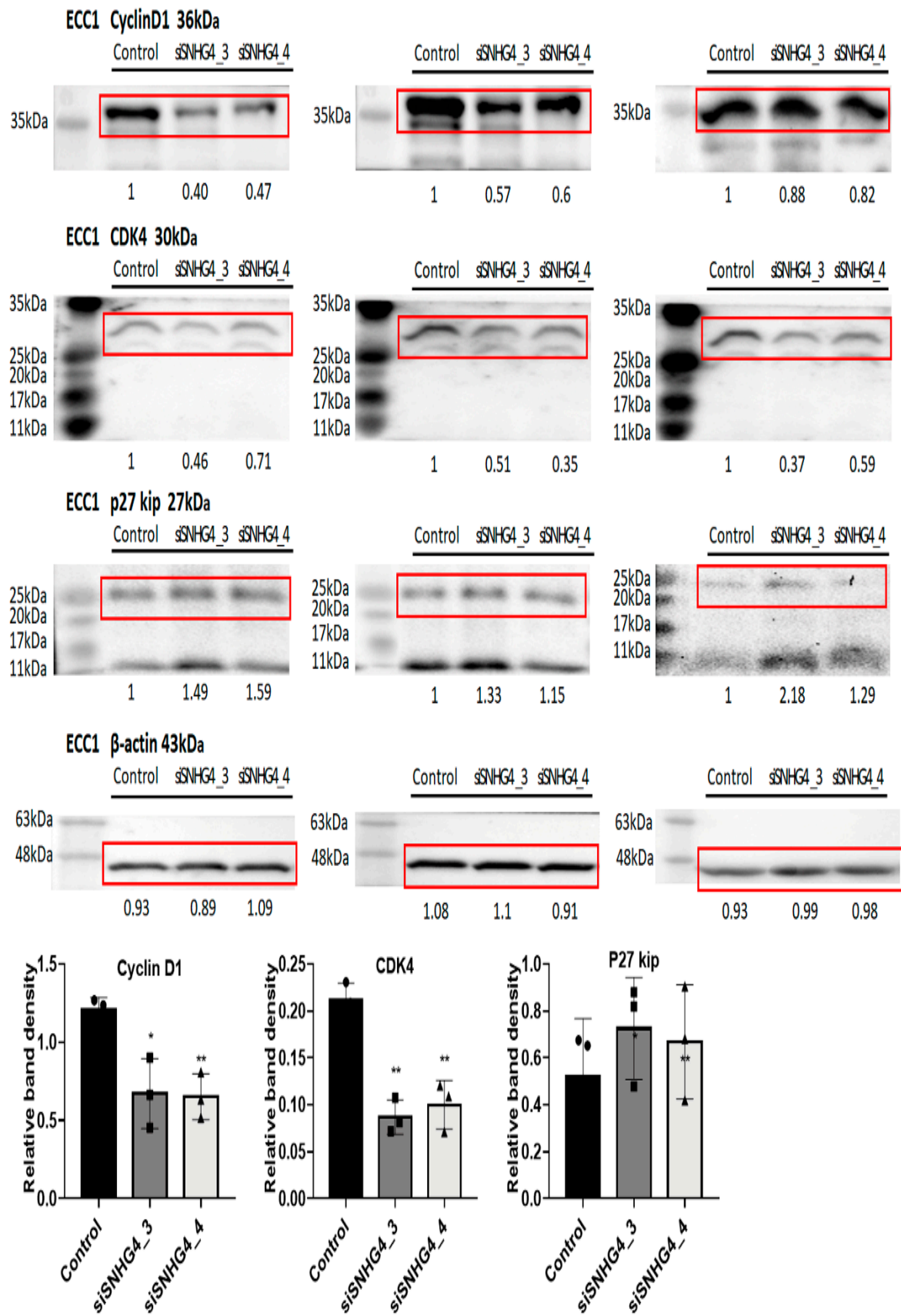


Figure S3. SP-1 regulates EMT signaling pathways. (A) SP-1 was knocked down in two endometrial cancer cell lines. (B) EMT expression were determined through quantitative real-time polymerase chain reaction (qRT-PCR) analysis. qRT-PCR was performed in triplicate. * $p < 0.05$, ** $p < 0.01$, *** $p < 0.001$ versus control. (C) EMT expression of protein lysates of two endometrial cancer cell lines in which SP-1 was knocked down was confirmed by Western blot analysis.

Figure S4. The whole Western blot for Figure 3.



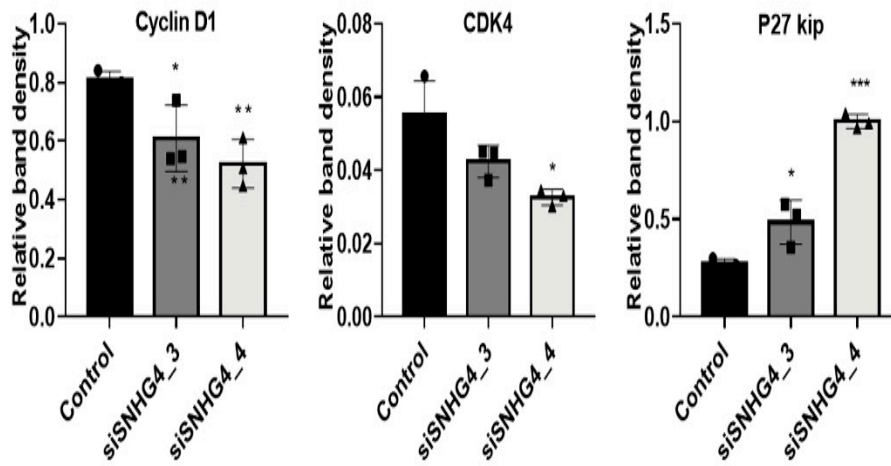
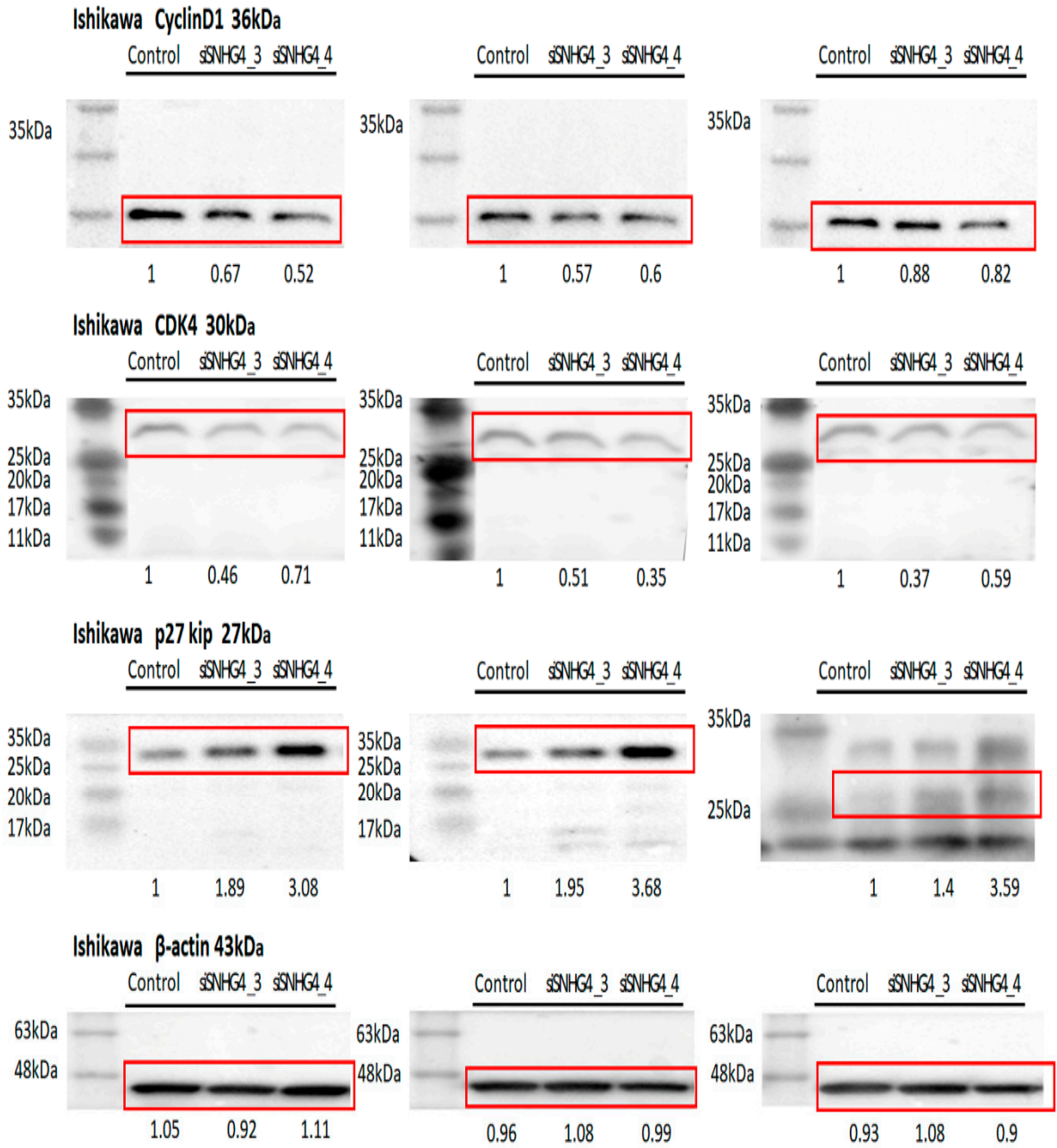
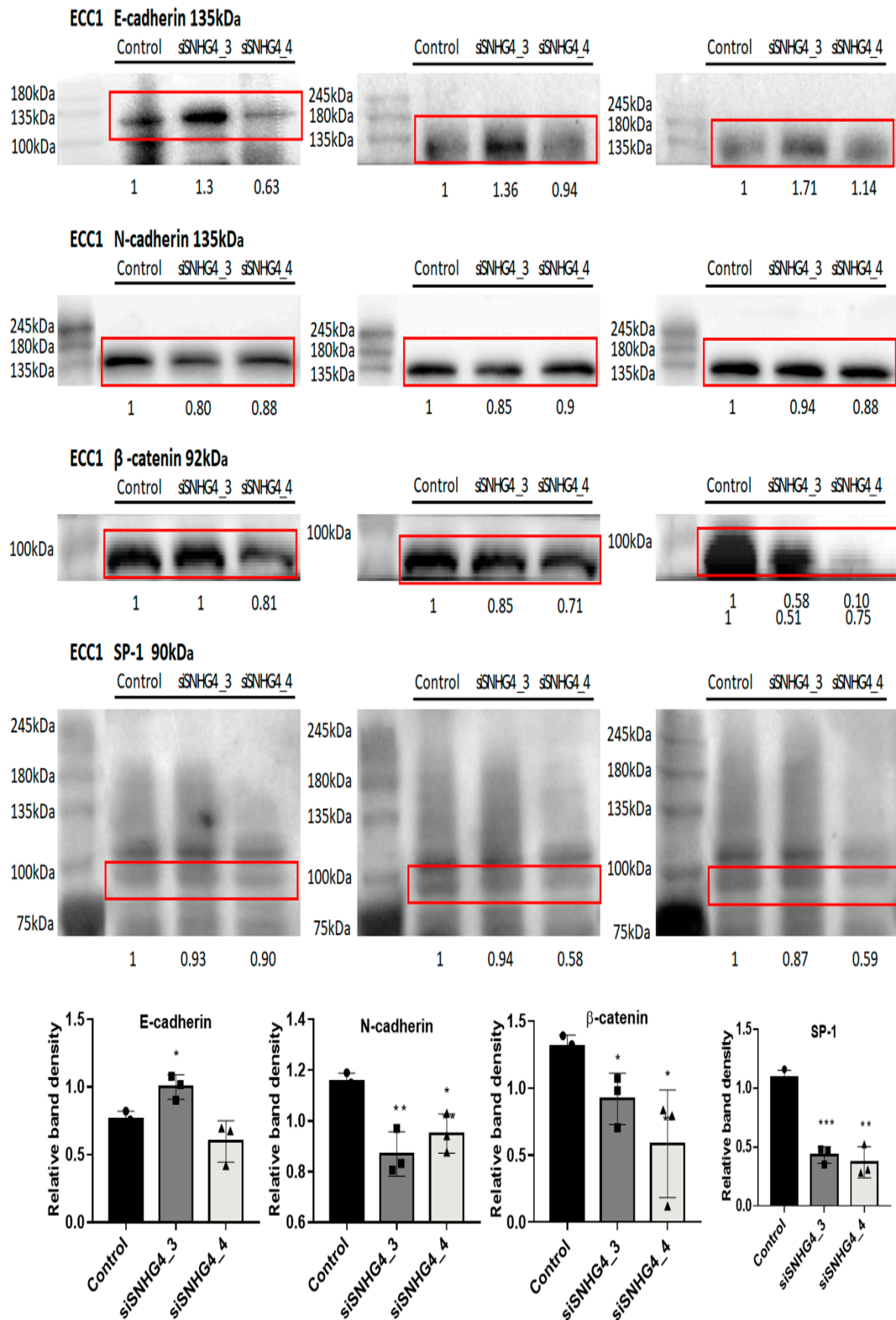


Figure S5. The whole Western blot for Figure 5.



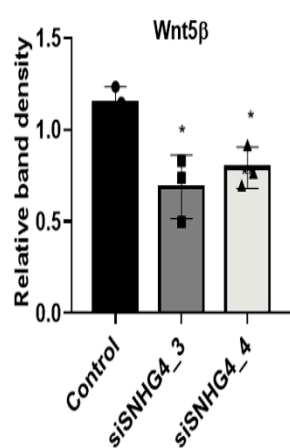
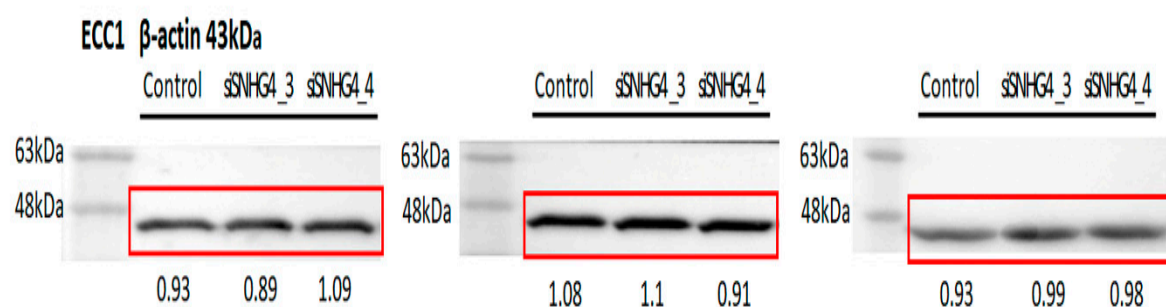
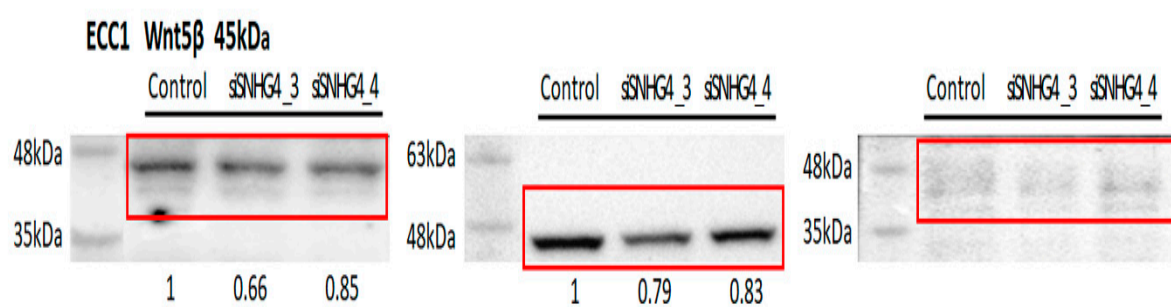


Figure S6. The whole Western blot for Figure 6.

