

Supplementary Figure

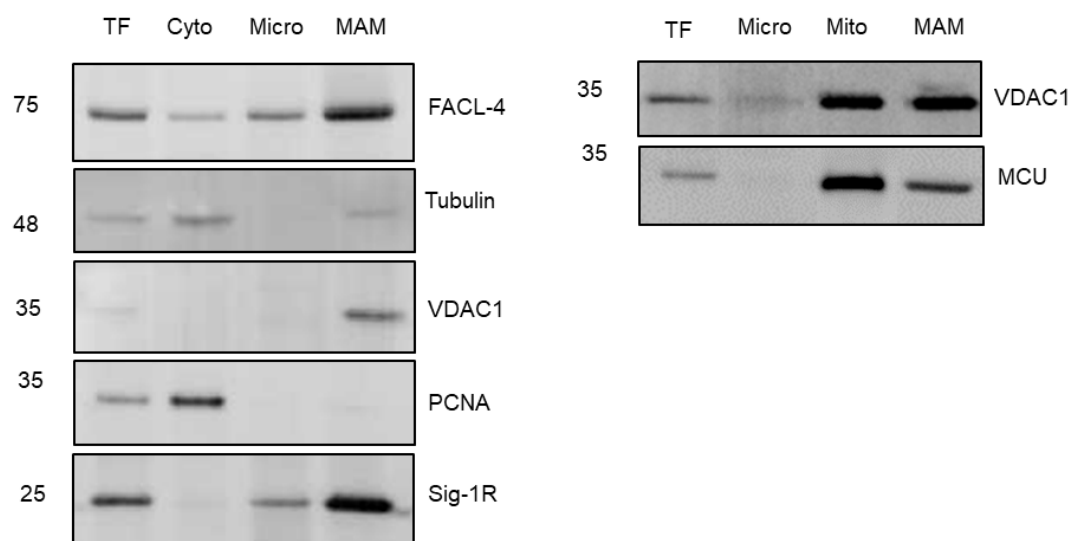


Figure S1. Analysis of protein components of subcellular fractions from wild-type (WT) mouse neuroblastoma cell line (N2A). Representative western blots for long-chain fatty-acid CoA synthase (FACL-4), tubulin, voltage-dependent anion channel 1 (VDAC1), proliferating cell nuclear antigen (PCNA), Sigma 1 receptor (Sig-1R), and mitochondrial calcium uniporter (MCU) proteins in total fraction (TF), cytosol (Cyto), microsomes (Micro), mitochondria (Mito), and mitochondrial-associated membranes (MAMs).