

Figure S1. GC–MS chromatogram of the derivatised n-hexane extracts at 5 min and 3 h, from the cuticular waxes of cork oak leaves.

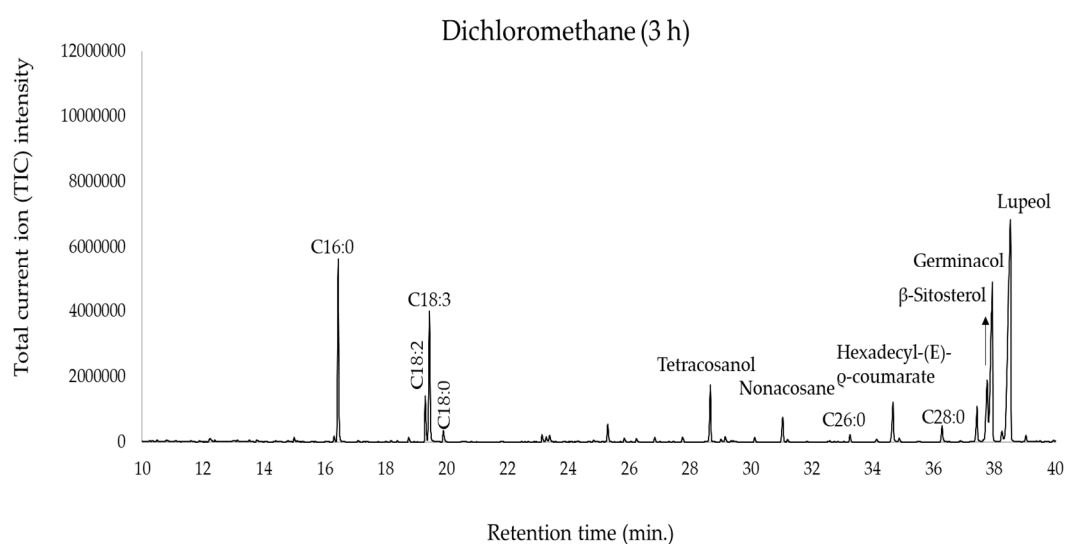
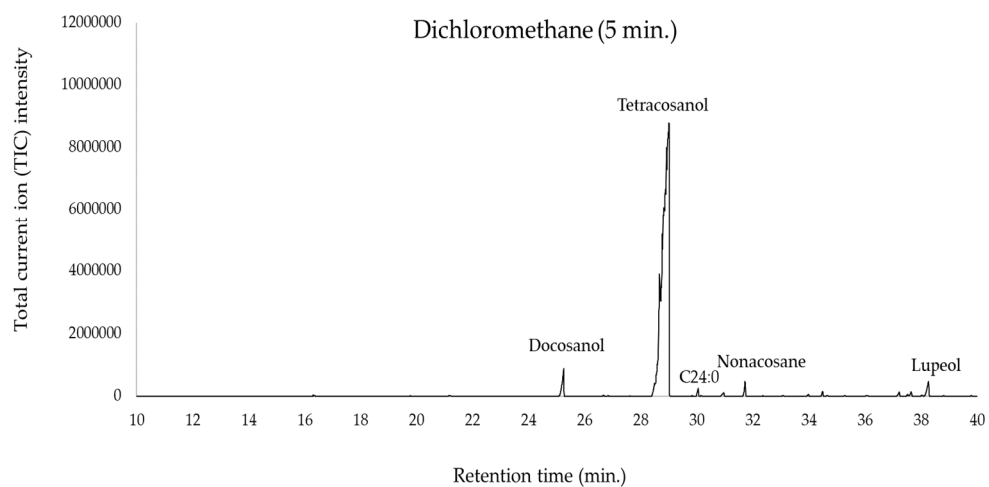


Figure S2. GC-MS chromatogram of the derivatised dichloromethane extracts at 5 min and 3 h, from the cuticular waxes of cork oak leaves.

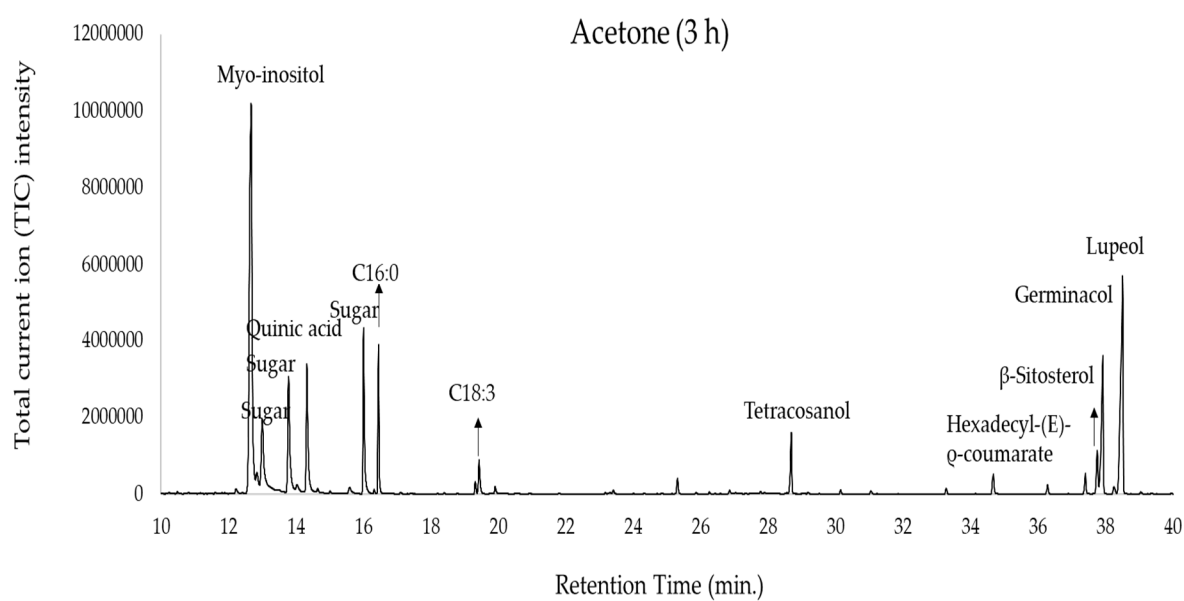
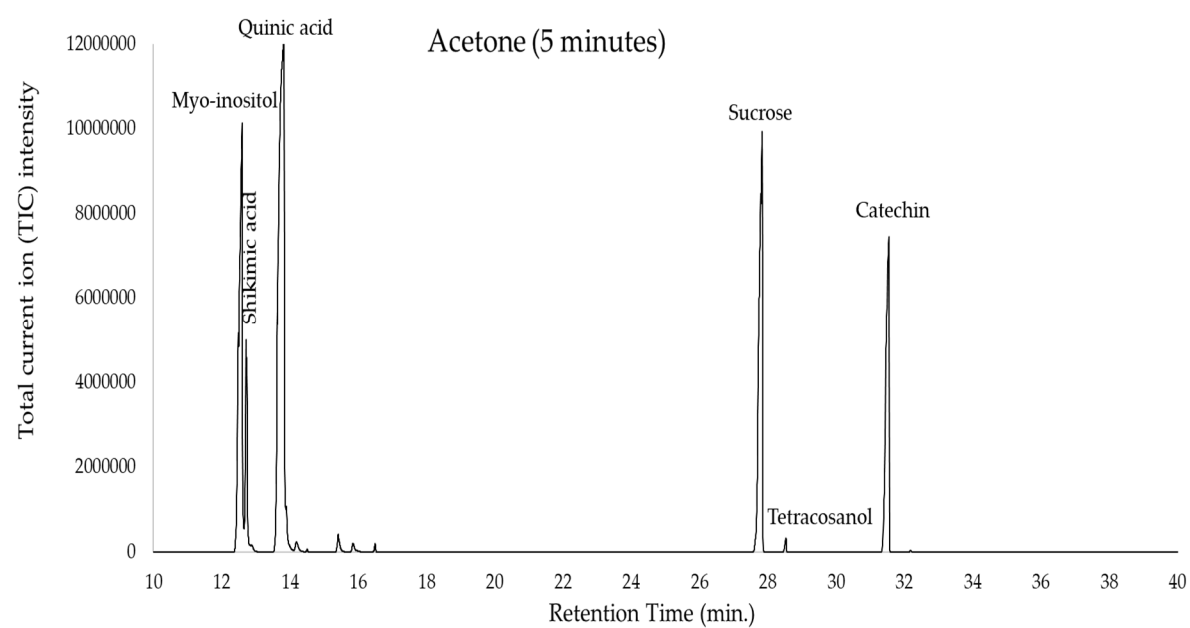


Figure S3. GC–MS chromatogram of the derivatised acetone extracts at 5 min and 3 h, from the cuticular waxes of cork oak leaves.