

Figure S1. Chromatograms of volatile compounds extracted on PDMS/DVB fiber from flowers of St. John's wort dried by Method 1 (M1), Method 2 (M2) and Method 3 (M3). For peak designation see Table 1.

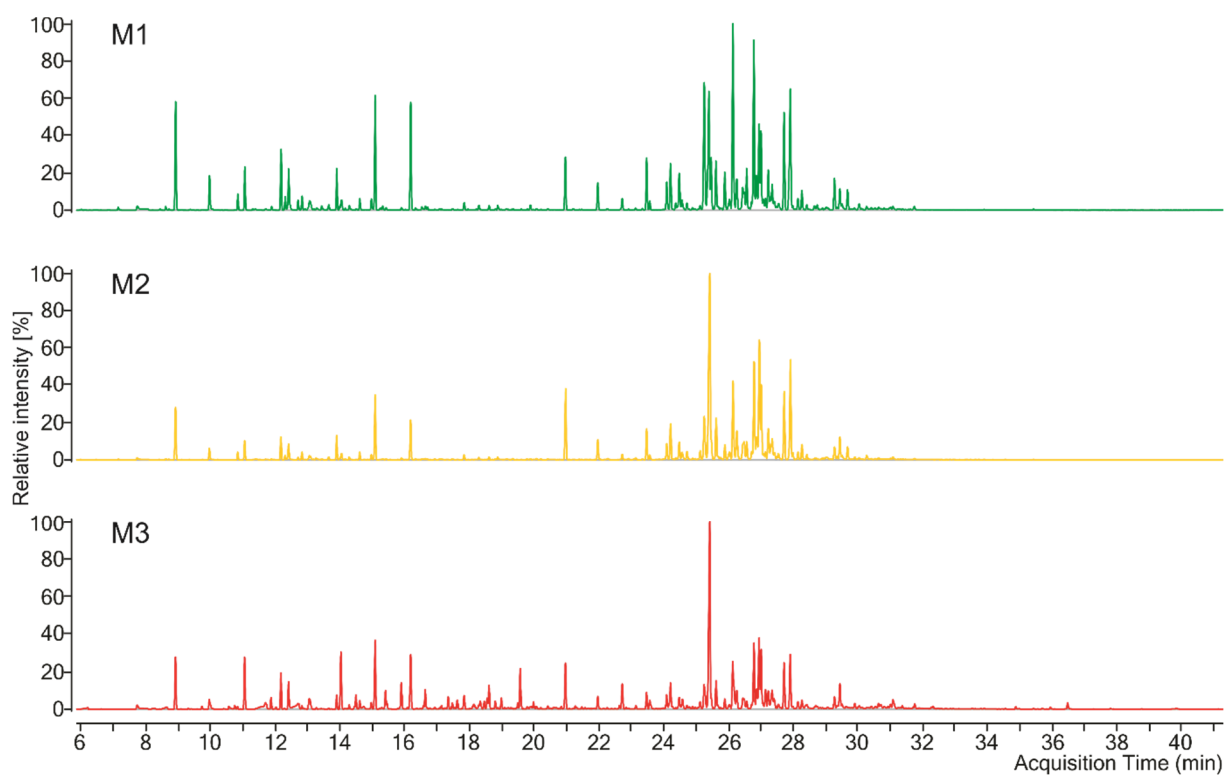


Figure S2. Chromatograms of volatile compounds extracted on PDMS/DVB fiber from leaves of St. John's wort dried by Method 1 (M1), Method 2 (M2) and Method 3 (M3). For peak designation see Table 1.

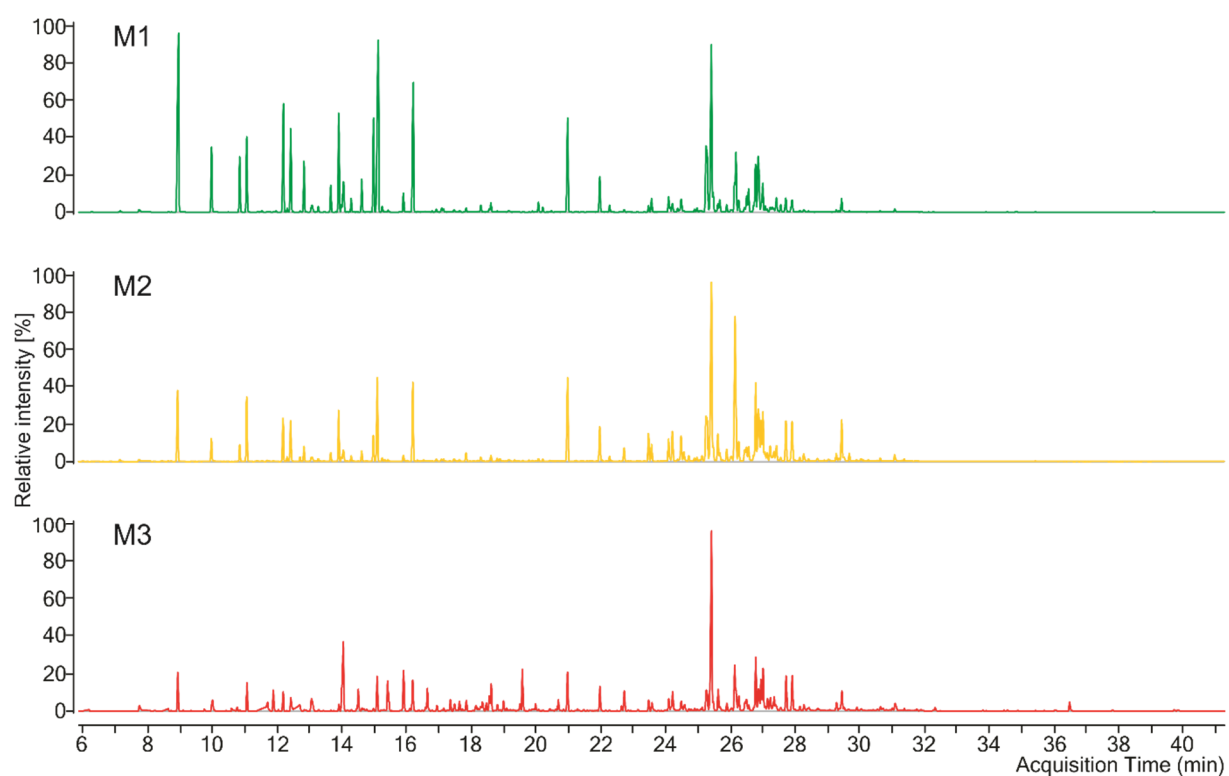


Figure S3. Chromatograms of volatile compounds extracted on PDMS/DVB fiber from stems of St. John's wort dried by Method 1 (M1), Method 2 (M2) and Method 3 (M3). For peak designation see Table 1.