

Supplementary Materials

Figure S1 was used to point to Section 3.1.

Figure S2 was used to point to Section 3.1.

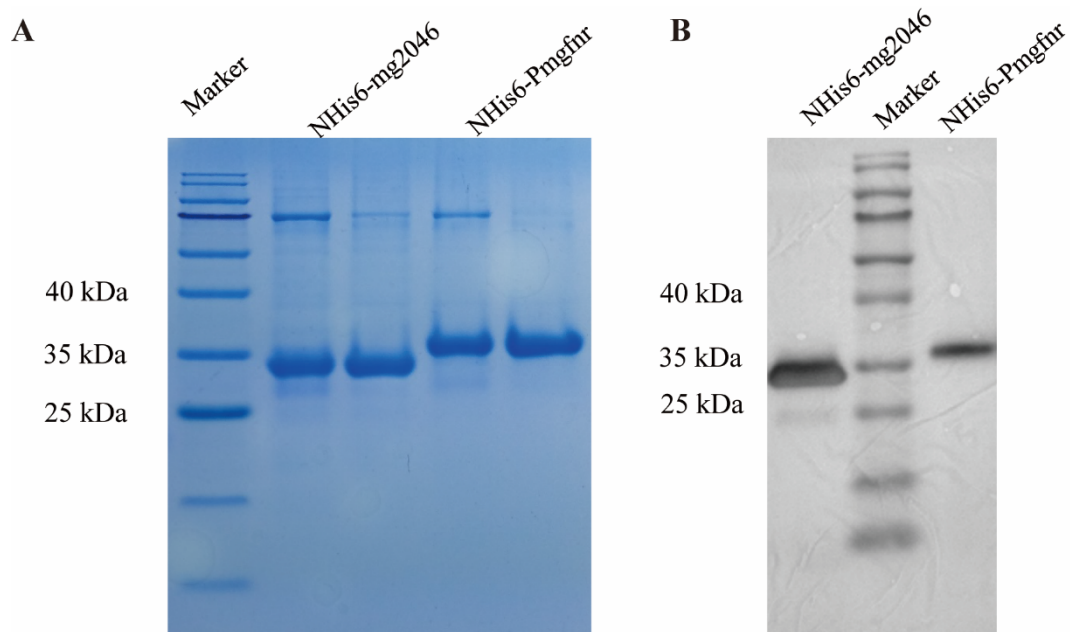


Figure S1. Protein purification and verification. (A)SDS-PAGE purification of proteins His6-Mgfmr and His6-Mg2046. (B)confirmation of target protein by Western blotting.

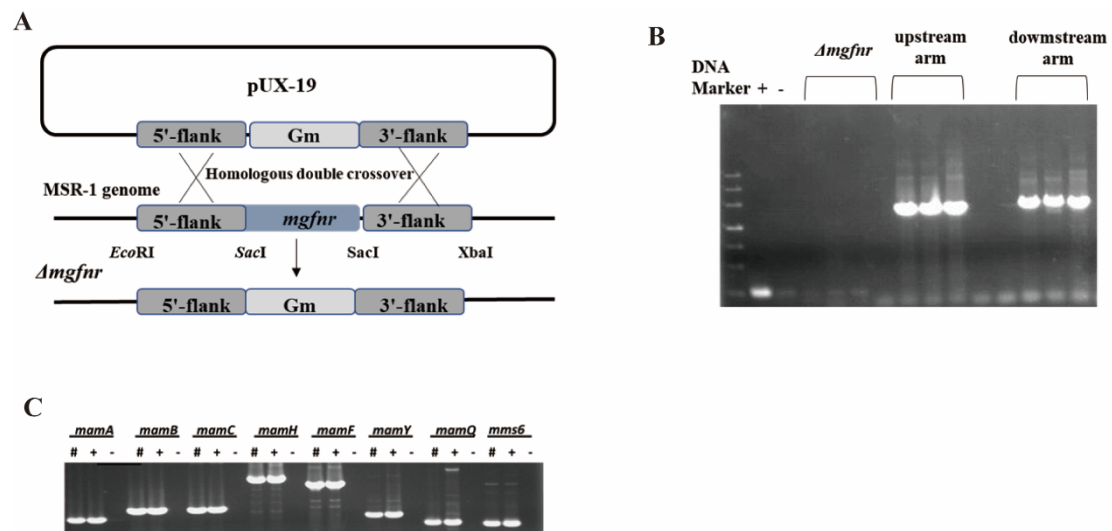


Figure S2. Construction of $\Delta mgfmr$ strains and confirmation by PCR. (A) Construction of $\Delta mgfmr$ strains (schematic). (B) Confirmation by PCR of $\Delta mgfmr$ strains. Markers: 3000, 2000, 1200, 800, 500, and 200 bp. (C) Detection by PCR of *mam* genes in mutant strains.