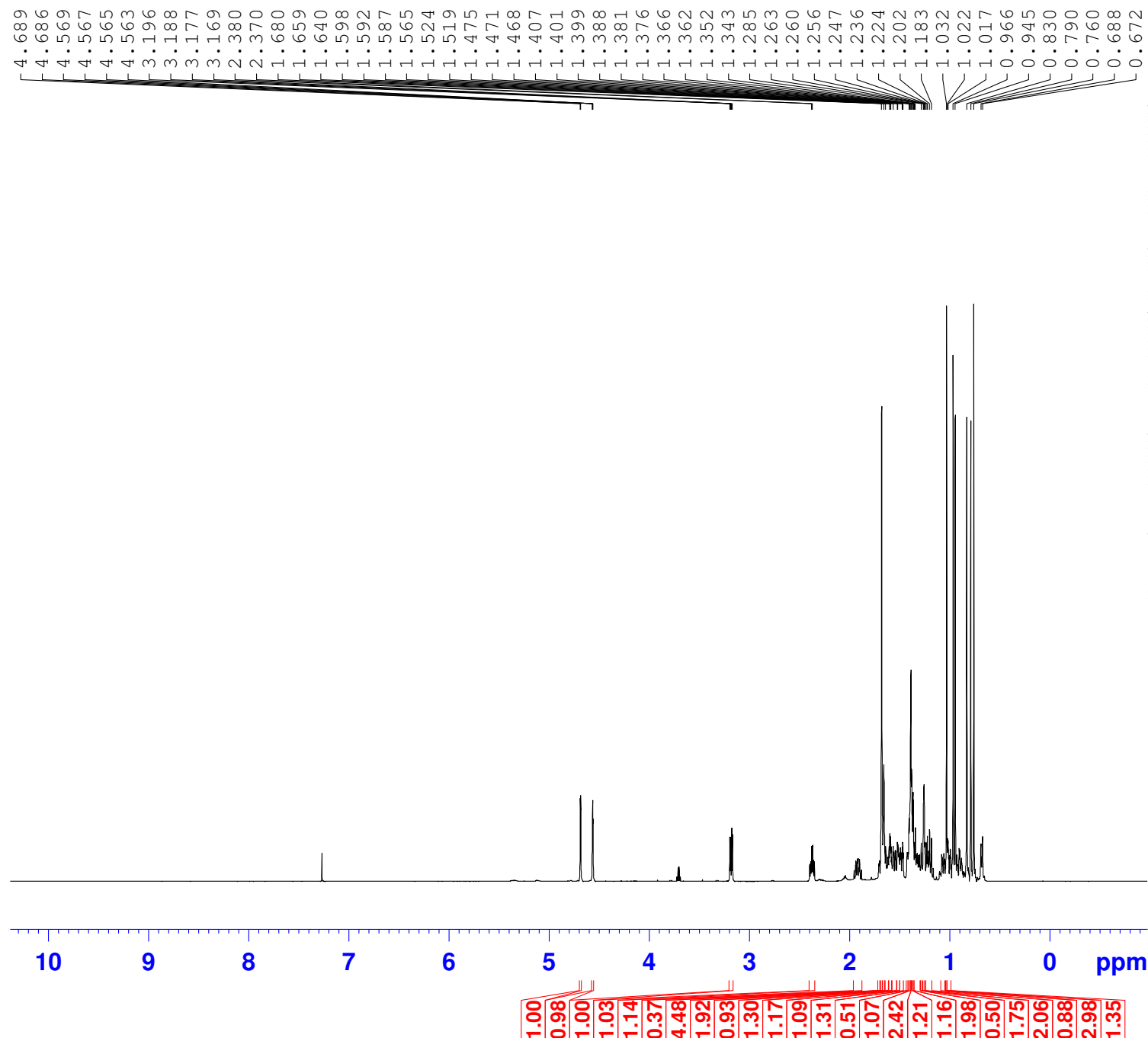


Supplemental Information 1A: ¹H-NMR spectrum of the isolated compound from *C. nutans* roots.

Angelina_sample 1 : Lupeol 1 in CDCl₃
proto

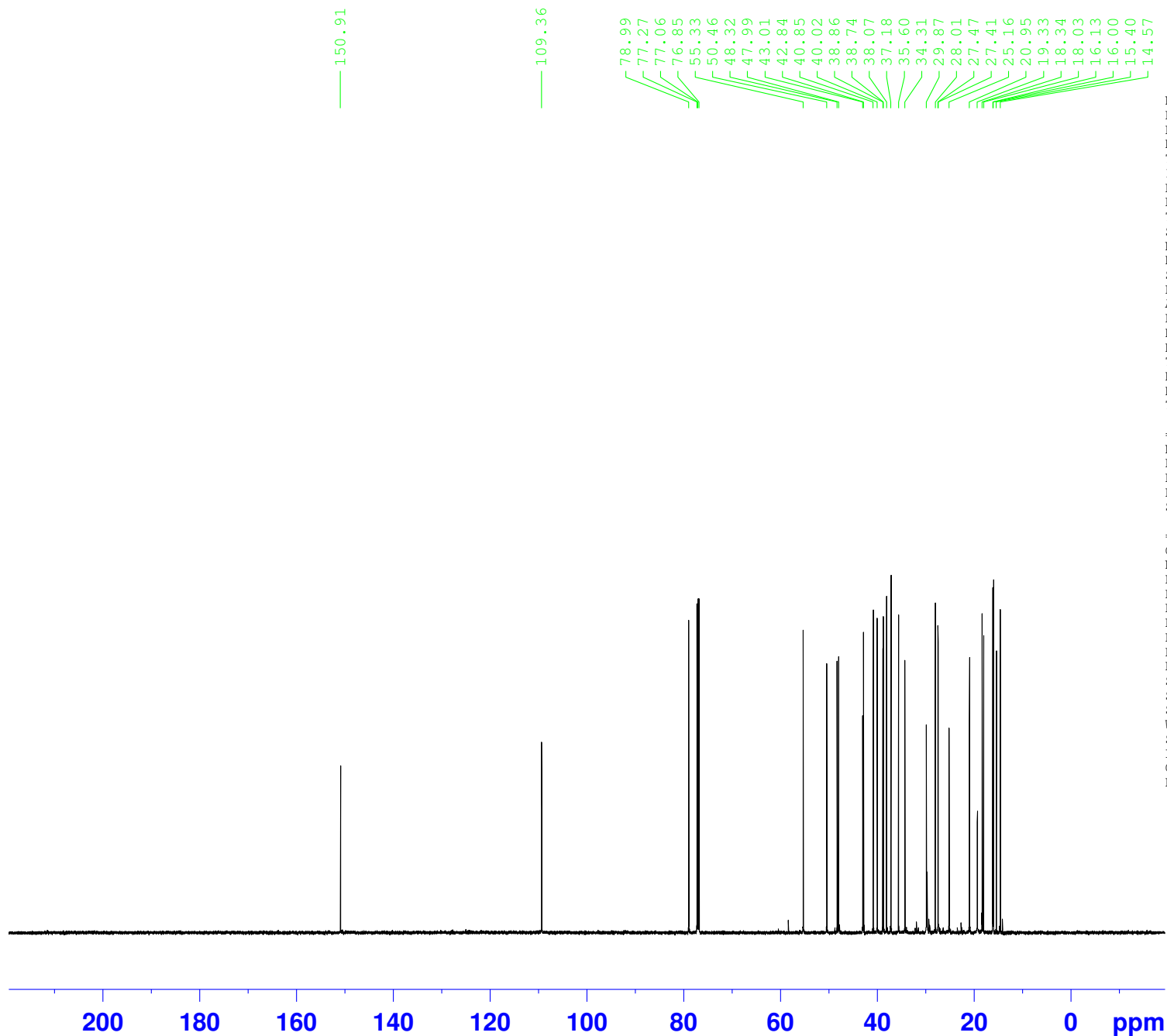


NAME Angelina_sample 1 Lupeol 1
EXPNO 11
PROCNO 1
Date_ 20160428
Time 16.10
INSTRUM spect
PROBHD 5 mm PABBO BB-
PULPROG zg30
TD 65536
SOLVENT CDCl₃
NS 16
DS 2
SWH 12335.526 Hz
FIDRES 0.188225 Hz
AQ 2.6564426 sec
RG 101
DW 40.533 usec
DE 6.50 usec
TE 298.1 K
D1 1.00000000 sec
TD0 1

===== CHANNEL f1 =====
NUC1 1H
P1 12.75 usec
PL1 -3.80 dB
PL1W 31.75489044 W
SFO1 600.3037071 MHz
SI 32768
SF 600.3000098 MHz
WDW EM
SSB 0
LB 0.30 Hz
GB 0
PC 1.00

Supplemental Information 1B: ¹³C-NMR spectrum of the isolated compound from *C. nutans* roots.

Angelina_sample 1 : Lupeol 1 in CDCl₃
¹³C



NAME Angelina_sample 1 Lupeol 1
EXPNO 20
PROCNO 1
Date_ 20160428
Time 21.31
INSTRUM spect
PROBHD 5 mm PABBO BB-
PULPROG zgpg30
TD 65536
SOLVENT CDCl₃
NS 5120
DS 4
SWH 36057.691 Hz
FIDRES 0.550197 Hz
AQ 0.9088159 sec
RG 203
DW 13.867 usec
DE 6.50 usec
TE 298.5 K
D1 2.00000000 sec
D11 0.03000000 sec
TDO 1

===== CHANNEL f1 =====
NUC1 ¹³C
P1 10.00 usec
PL1 1.80 dB
PL1W 68.20902252 W
SFO1 150.9606496 MHz

===== CHANNEL f2 =====
CPDPRG2 waltz16
NUC2 ¹H
PCPD2 80.00 usec
PL2 -3.80 dB
PL12 12.15 dB
PL13 17.00 dB
PL2W 31.75489044 W
PL12W 0.80688316 W
PL13W 0.26412567 W
SFO2 600.3024012 MHz
SI 32768
SF 150.9455550 MHz
WDW EM
SSB 0
LB 1.00 Hz
GB 0
PC 1.40