

Contents

- 1) **Figure S1.** TGA and DSC curves of ACCz-DPyM and POxCz-DPyM.
- 2) **Figure S2.** The AFM topographic images of the solution-processed ACCz-DPyM and POxCz-DPyM films.
- 3) **Figure S3.** CV of ACCz-DPyM and POxCz-DPyM in CH₂Cl₂ solution.
- 4) **Figure S4.** ¹H NMR spectrum of ACCz-DPyM.
- 5) **Figure S5.** ¹³C NMR spectrum of ACCz-DPyM.
- 6) **Figure S6.** HRMS spectrum of ACCz-DPyM.
- 7) **Figure S7.** ¹H NMR spectrum of POxCz-DPyM.
- 8) **Figure S8.** ¹³C NMR spectrum of POxCz-DPyM.
- 9) **Figure S9.** HRMS spectrum of POxCz-DPyM.

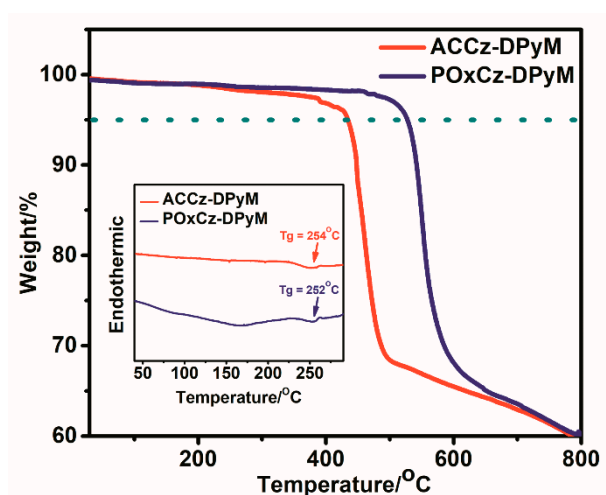
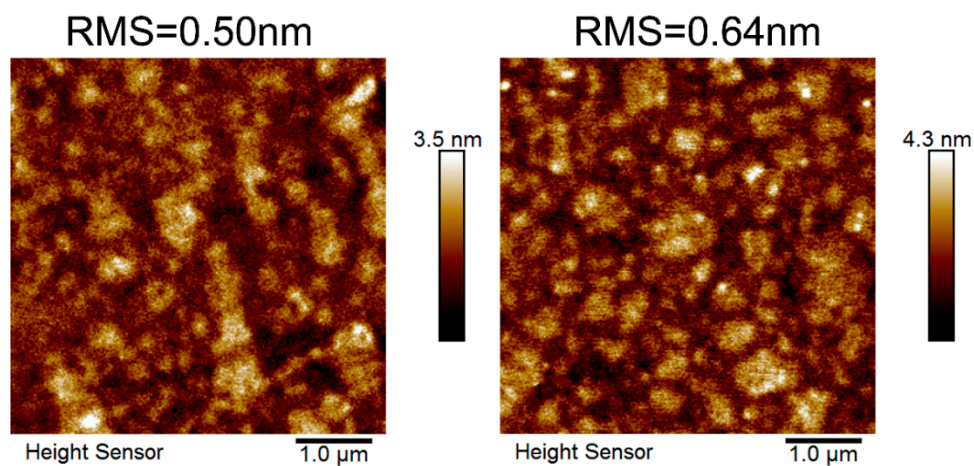


Figure S1. TGA and DSC curves of ACCz-DPyM and POxCz-DPyM.



¹H NMR spectrum of compound **1** in CDCl₃. The spectrum shows peaks from 0 to 10 ppm. The aromatic region (6.5-9.5 ppm) contains several multiplets and doublets. The aliphatic region (1.5-3.5 ppm) shows a large singlet for the methyl groups. Integration values are provided below the peaks.

Chemical structure of compound **1** is shown above the spectrum.

Peak list (ppm): 9.356, 9.351, 8.740, 8.734, 8.719, 8.713, 8.472, 8.468, 8.426, 8.404, 8.334, 7.571, 7.545, 7.508, 7.506, 7.489, 7.488, 6.957, 6.936, 6.907, 6.888, 6.870, 6.280, 6.259, 1.644.

Integration values: 2.00, 2.00, 4.00, 4.00, 2.00, 4.00, 8.00, 8.02, 8.00, 8.00, 24.00.

Figure S4. ^1H NMR spectrum of ACCz-DPyM.

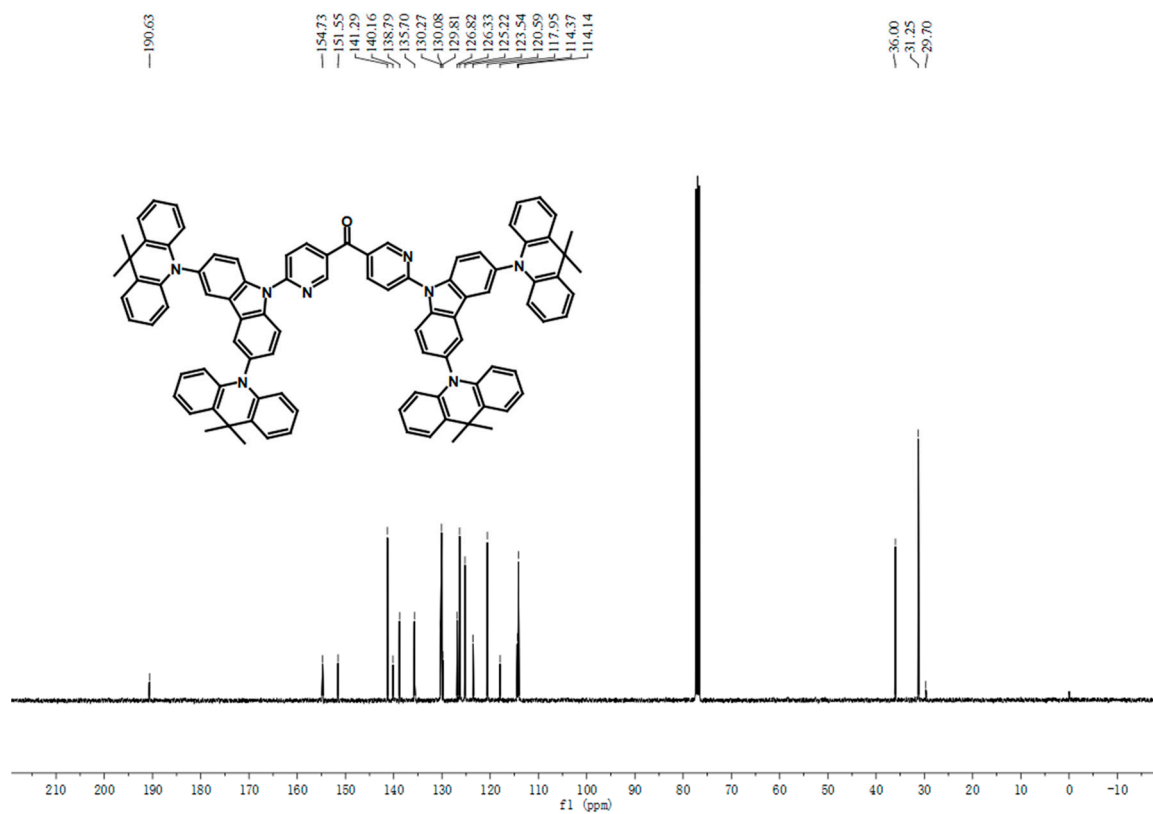


Figure S5. ^{13}C NMR spectrum of ACCz-DPyM.

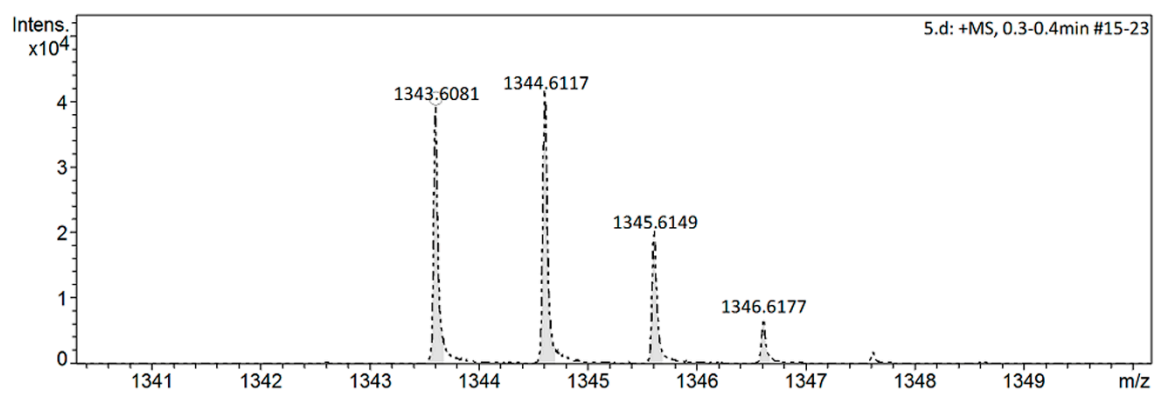


Figure S6. HRMS spectrum of ACCz-DPyM.

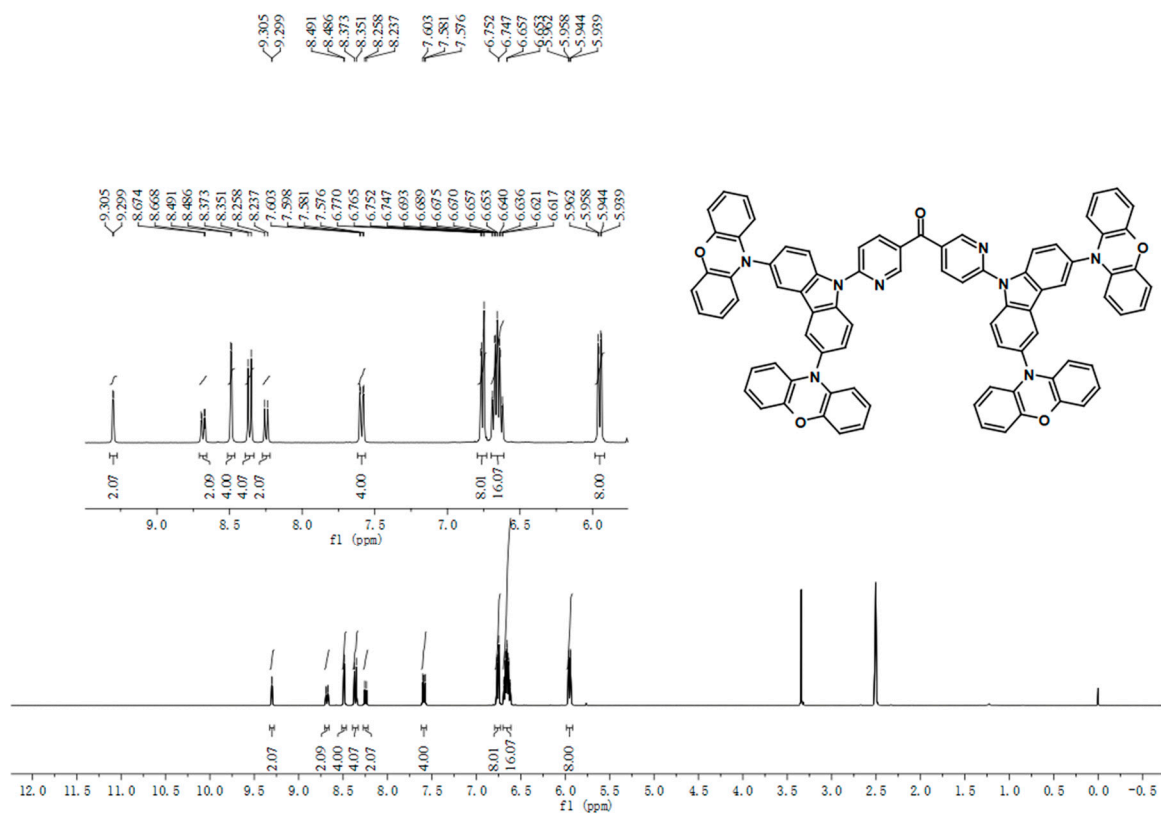


Figure S7. ¹H NMR spectrum of POxCz-DPyM.

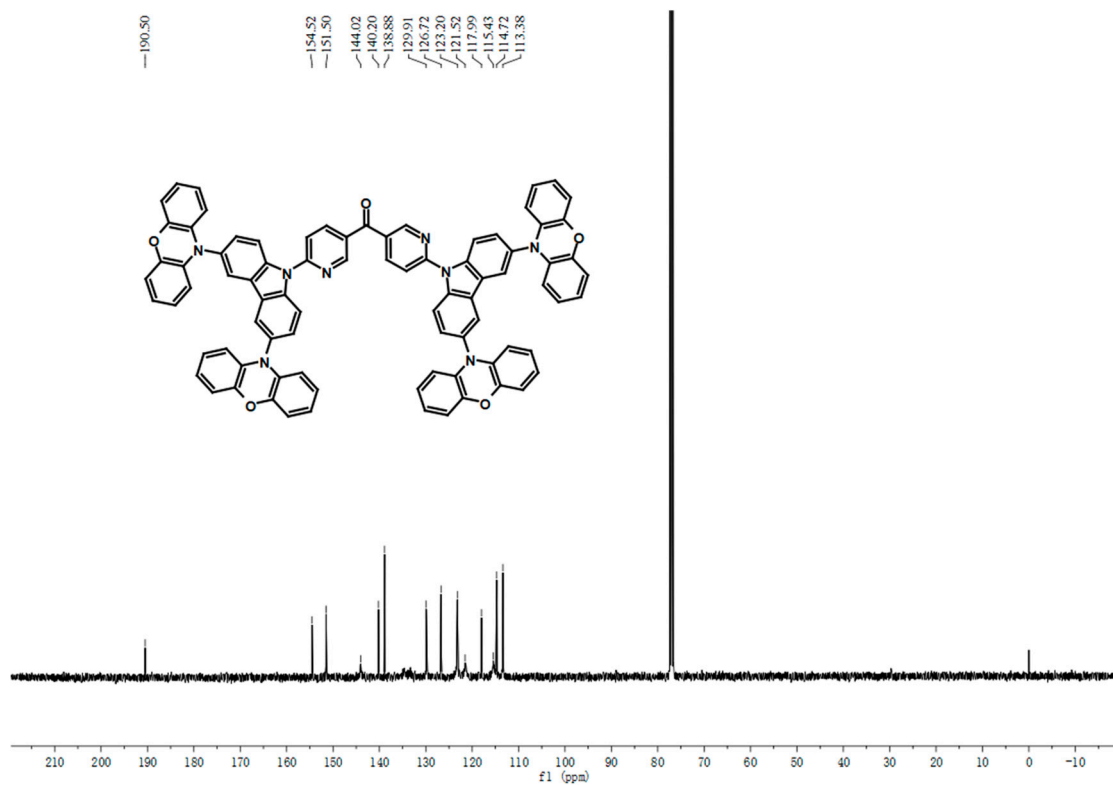


Figure S8. ¹³C NMR spectrum of POxCz-DPyM.

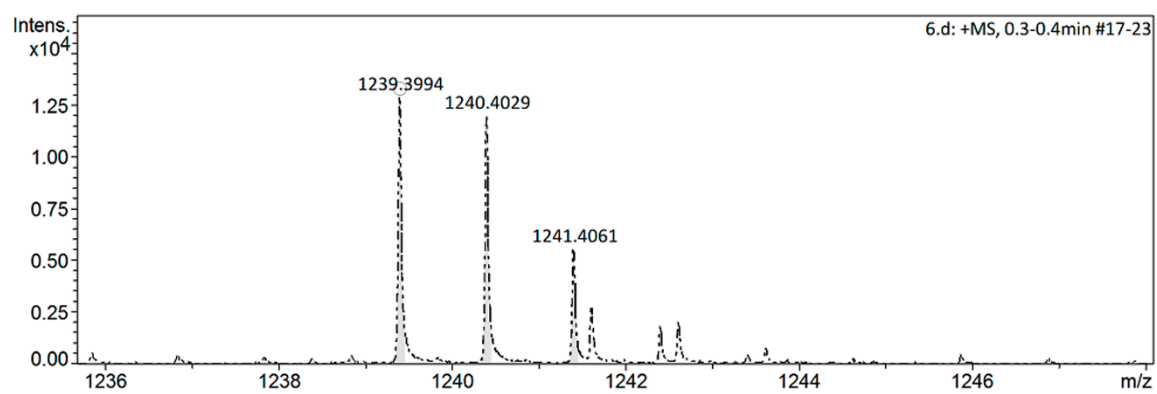


Figure S9. HRMS spectrum of **POxCz-DPyM**.