

Supporting Information

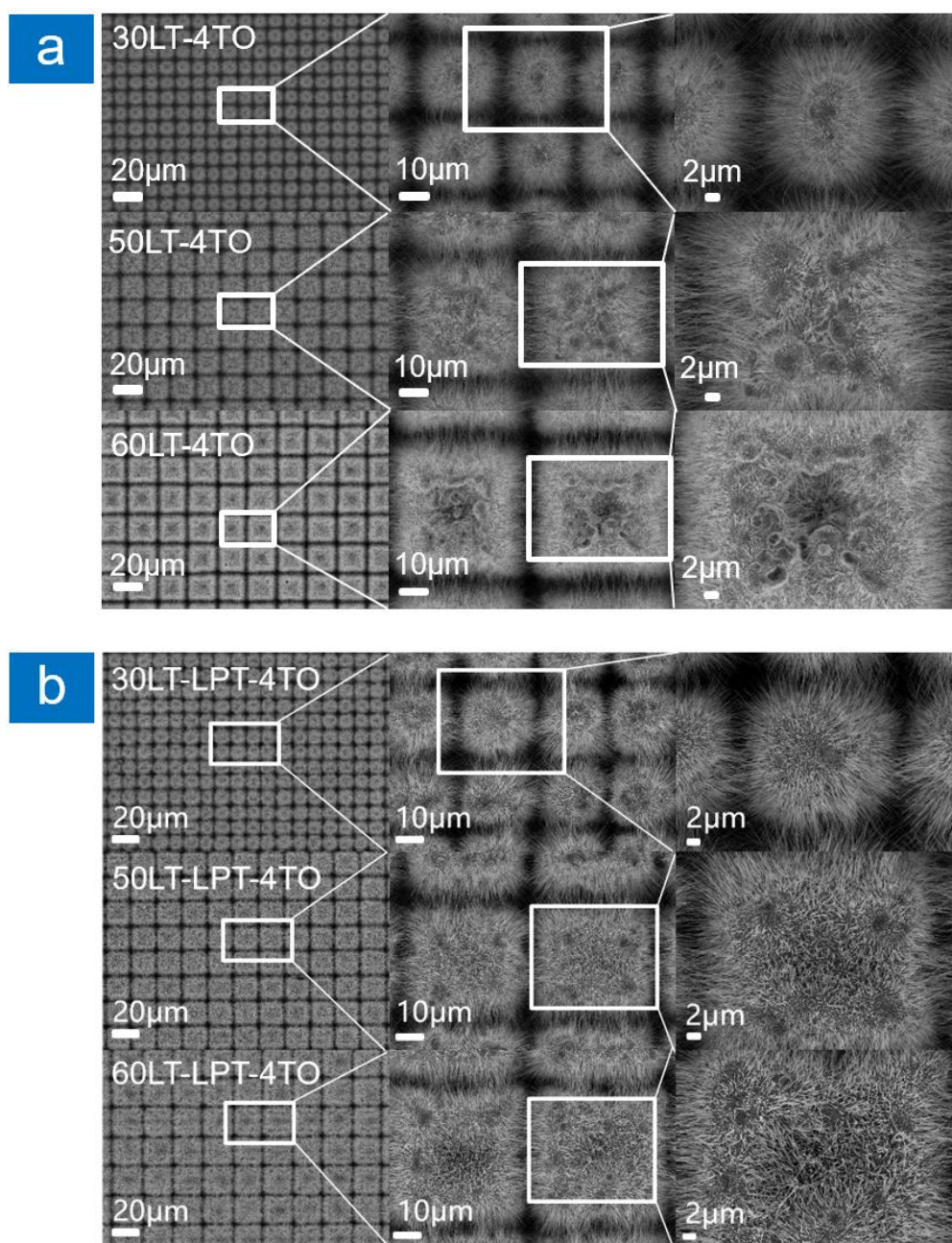


Figure S1. SEM images of surface morphologies at different magnifications and laser texturing intervals (thermal oxidation time is 4 hours) (a) without and (b) with the laser post-treatment.

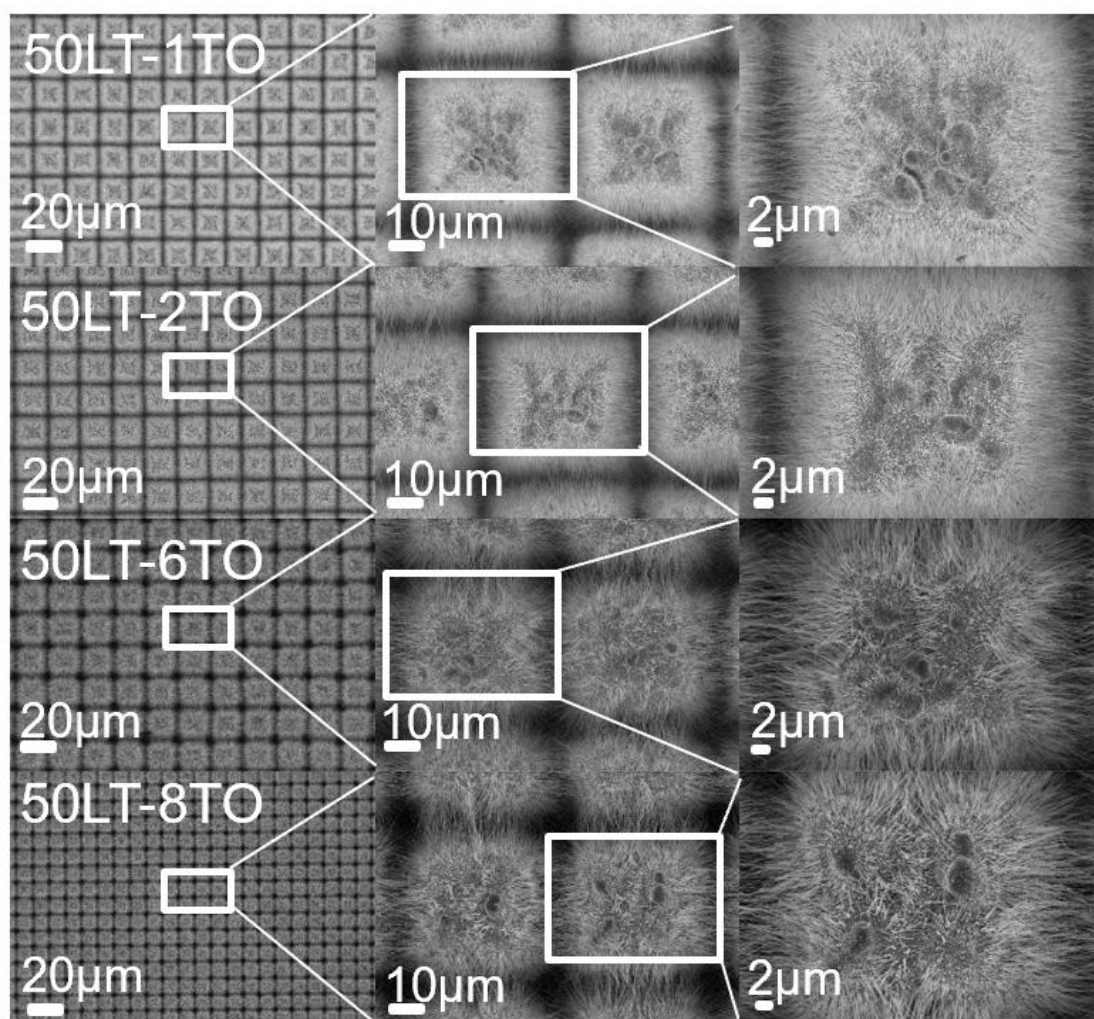


Figure S2. SEM images of surface morphologies at different magnifications and thermal oxidation time (laser texturing intervals is 50 μm).

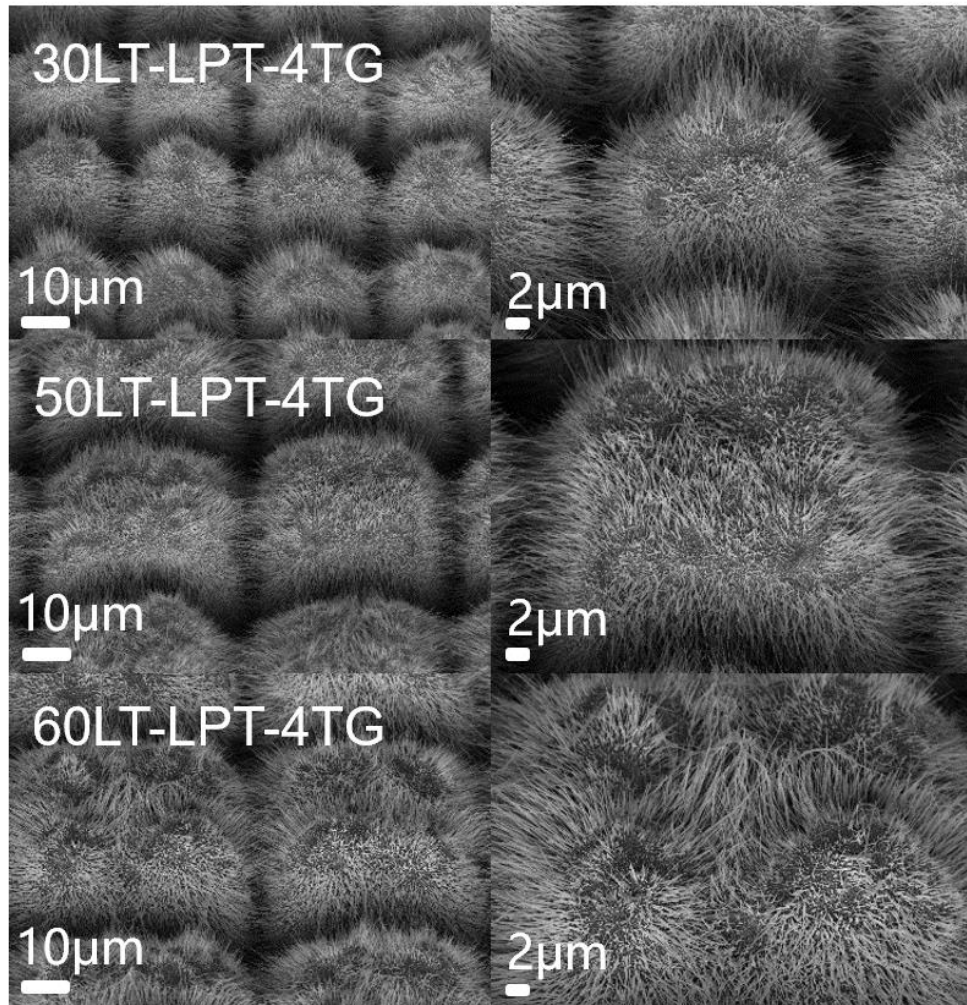


Figure S3. SEM images of surface morphologies at an oblique view with the laser post-treatment.

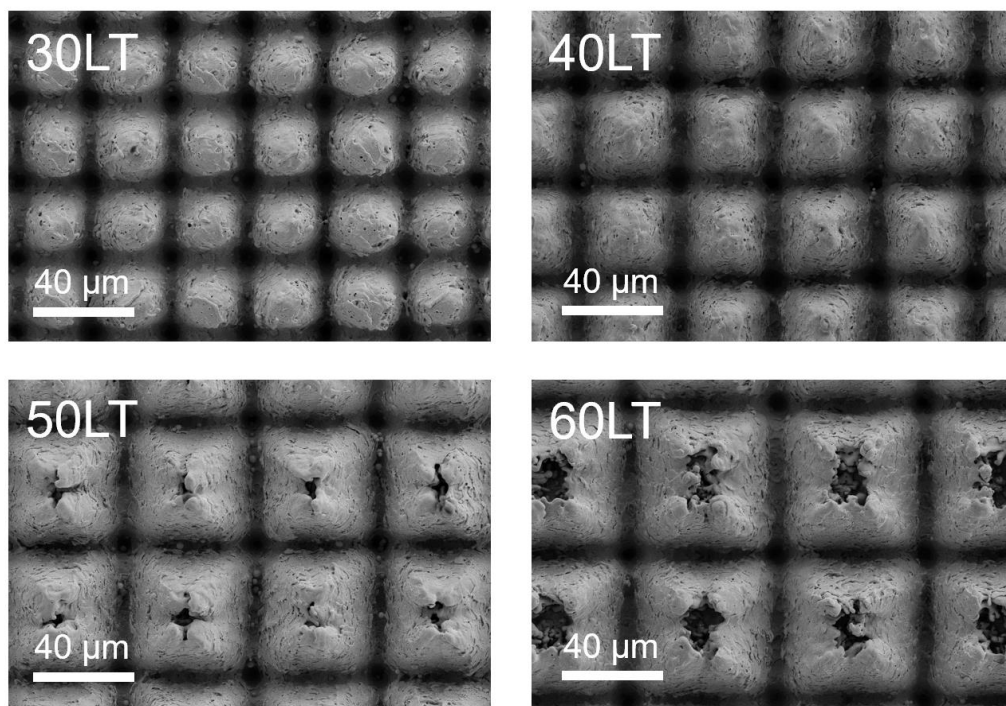


Figure S4. SEM images of surface morphologies at different laser texturing intervals without the laser post-treatment.

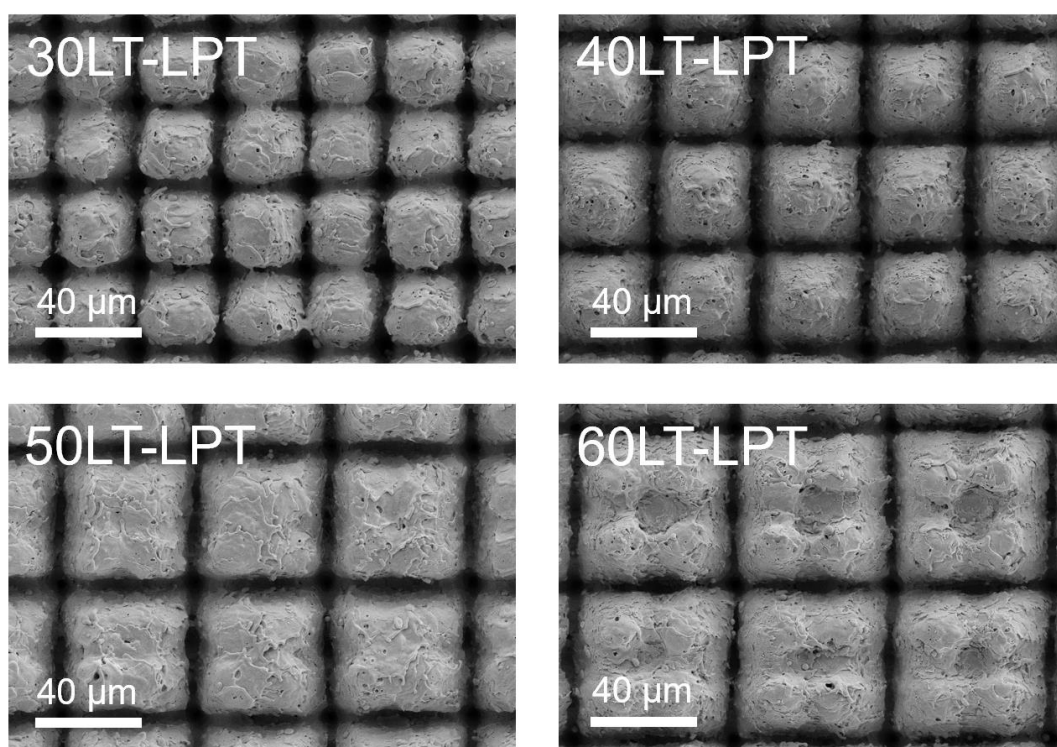


Figure S5. SEM images of surface morphologies at different laser texturing intervals with the laser post-treatment.

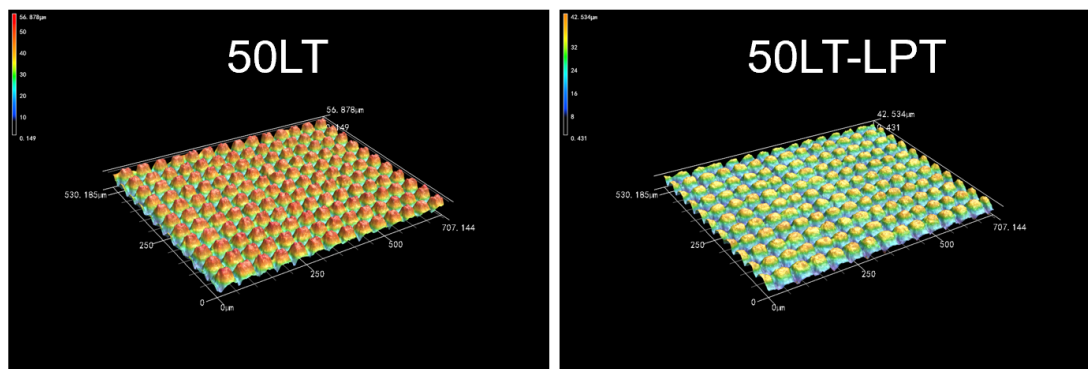


Figure S6. Ultra-depth-of-field microscope image of samples with and without laser post-treatment.

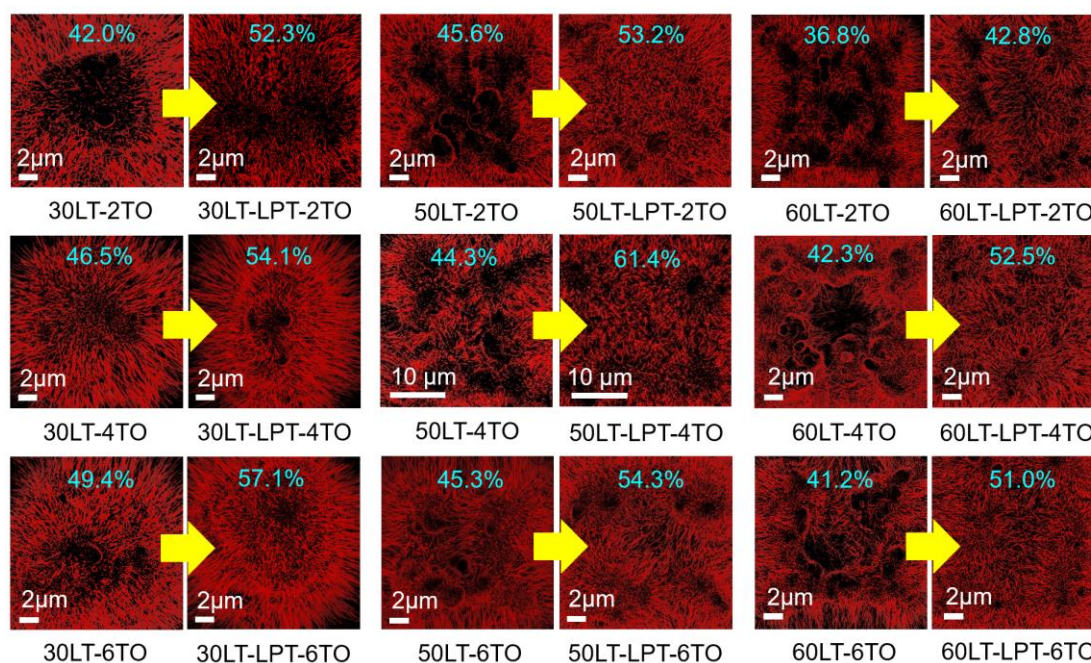


Figure S7. Statistical SEM images of density of nanowires on different samples with and without laser post-treatment.