

Figure S1. Global cultivation areas (A) and yields (B) of maize, rice, wheat and soybean [28].

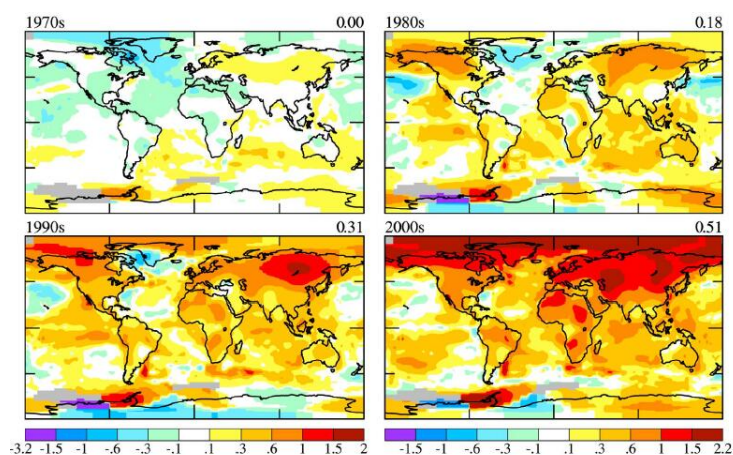


Figure S2. Changes and frequencies of abnormal surface temperature per 10 years from 1970 to 2000 [47].

- 47 Monfreda, C.; Ramankutty, N.; Foley, J., A. Farming the planet: 2. Geographic distribution of crop areas, yields, physiological types, and net primary production in the year 2000. *Glob. Biogeochem. Cycles* **2008**, 22, 1–19. GB1022, doi:10.1029/2007GB002947.